



**TRILOBITE  
TESTING, INC.**

# DRILL STEM TEST REPORT

CMX INC  
1700N WaterFront PKWY  
Bldg 300 B  
ATTN: Leah Kasten

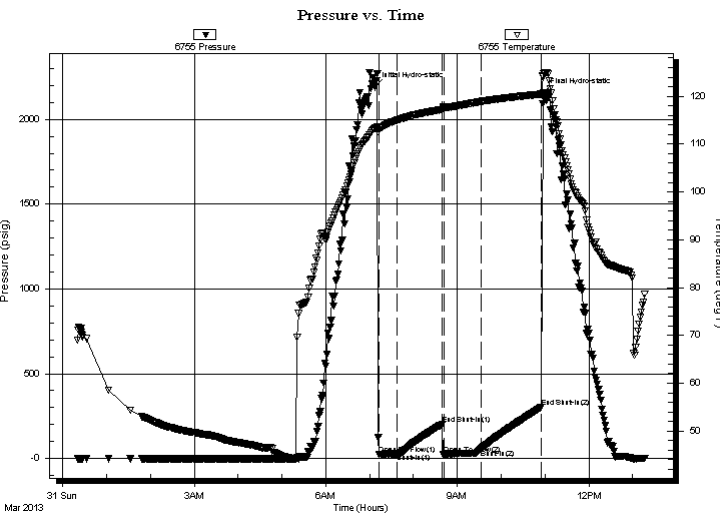
**6-24-19 Edwards Co**  
**Bornholdt #1**  
Job Ticket: 50945 **DST#: 1**  
Test Start: 2013.03.31 @ 00:20:15

## GENERAL INFORMATION:

Formation: **Mississippi**  
Deviated: No Whipstock: ft (KB)  
Time Tool Opened: 07:13:15  
Time Test Ended: 13:17:30  
Interval: **4510.00 ft (KB) To 4552.00 ft (KB) (TVD)**  
Total Depth: 4552.00 ft (KB) (TVD)  
Hole Diameter: 7.88 inches Hole Condition: Fair  
Test Type: Conventional Bottom Hole (Initial)  
Tester: Chris Staats  
Unit No: 47  
Reference Elevations: 2202.00 ft (KB)  
2189.00 ft (CF)  
KB to GR/CF: 13.00 ft

**Serial #: 6755 Inside**  
Press @ RunDepth: 56.48 psig @ 4511.00 ft (KB) Capacity: 8000.00 psig  
Start Date: 2013.03.31 End Date: 2013.03.31 Last Calib.: 2013.03.31  
Start Time: 00:20:20 End Time: 13:17:30 Time On Btm: 2013.03.31 @ 07:07:30  
Time Off Btm: 2013.03.31 @ 10:57:15

**TEST COMMENT:** IF: Strong blow BOB 2 min  
IS: No blow back  
FF: Strong blow BOB 5 sec  
FS: No blow back



## PRESSURE SUMMARY

Time (Min.)	Pressure (psig)	Temp (deg F)	Annotation
0	2190.58	113.32	Initial Hydro-static
6	25.56	113.33	Open To Flow (1)
30	28.53	114.98	Shut-In(1)
92	200.37	117.21	End Shut-In(1)
94	25.24	117.69	Open To Flow (2)
145	56.48	118.88	Shut-In(2)
228	302.62	120.44	End Shut-In(2)
230	2159.31	124.24	Final Hydro-static

## Recovery

Length (ft)	Description	Volume (bbl)
30.00	MUD	0.15

## Gas Rates

	Choke (inches)	Pressure (psig)	Gas Rate (Mcf/d)



**TRILOBITE  
TESTING, INC.**

# DRILL STEM TEST REPORT

**FLUID SUMMARY**

CMX INC  
1700N WaterFront PKWY  
Bldg 300 B  
ATTN: Leah Kasten

**6-24-19 Edwards Co**  
**Bornholdt #1**  
Job Ticket: 50945      **DST#: 1**  
Test Start: 2013.03.31 @ 00:20:15

## Mud and Cushion Information

Mud Type: Gel Chem	Cushion Type:	Oil API:	deg API
Mud Weight: 9.00 lb/gal	Cushion Length: ft	Water Salinity:	ppm
Viscosity: 57.00 sec/qt	Cushion Volume: bbl		
Water Loss: 7.99 in <sup>3</sup>	Gas Cushion Type:		
Resistivity: 0.00 ohm.m	Gas Cushion Pressure: psig		
Salinity: 4200.00 ppm			
Filter Cake: 0.02 inches			

## Recovery Information

Recovery Table

Length ft	Description	Volume bbl
30.00	MUD	0.148

Total Length: 30.00 ft      Total Volume: 0.148 bbl  
 Num Fluid Samples: 0      Num Gas Bombs: 0      Serial #:  
 Laboratory Name:      Laboratory Location:  
 Recovery Comments:

# Pressure vs. Time

