



**TRILOBITE
TESTING, INC.**

DRILL STEM TEST REPORT

CMX INC
1700N WaterFront PKWY
Bldg 300 B
ATTN: Leah Kasten

6-24-19 Edwards Co
Bornholdt #1
Job Ticket: 50946 **DST#: 2**
Test Start: 2013.03.31 @ 19:40:29

GENERAL INFORMATION:

Formation: **Mississippi**
Deviated: No Whipstock: ft (KB)
Time Tool Opened: 23:03:44
Time Test Ended: 05:47:44
Interval: **4509.00 ft (KB) To 4562.00 ft (KB) (TVD)**
Total Depth: 4562.00 ft (KB) (TVD)
Hole Diameter: 7.88 inches Hole Condition: Fair
Test Type: Conventional Bottom Hole (Reset)
Tester: Chris Staats
Unit No: 47
Reference Elevations: 2202.00 ft (KB)
2189.00 ft (CF)
KB to GR/CF: 13.00 ft

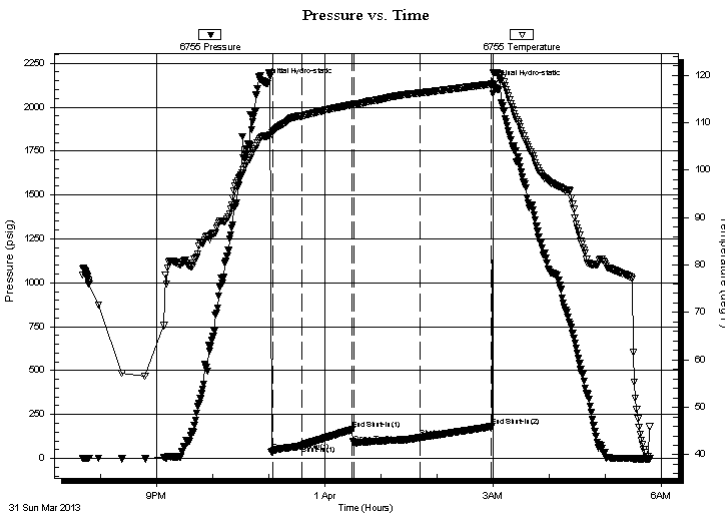
Serial #: 6755

Inside

Press @ Run Depth: 117.82 psig @ 4510.00 ft (KB) Capacity: 8000.00 psig
Start Date: 2013.03.31 End Date: 2013.04.01 Last Calib.: 2013.04.01
Start Time: 19:40:34 End Time: 05:47:44 Time On Btm: 2013.03.31 @ 22:54:29
Time Off Btm: 2013.04.01 @ 03:00:29

TEST COMMENT: IF: Fair blow 4 1/4 "
IS: No blow back
FF: Weak blow 2"
FS: No blow back

PRESSURE SUMMARY



Time (Min.)	Pressure (psig)	Temp (deg F)	Annotation
0	2140.35	107.11	Initial Hydro-static
10	40.69	107.93	Open To Flow (1)
41	73.39	111.39	Shut-In(1)
95	164.63	113.82	End Shut-In(1)
97	88.00	113.89	Open To Flow (2)
167	117.82	116.24	Shut-In(2)
244	180.86	118.13	End Shut-In(2)
246	2129.03	120.57	Final Hydro-static

Recovery

Length (ft)	Description	Volume (bbl)
185.00	O,M 1%oil 99%mud	0.91

* Recovery from multiple tests

Gas Rates

Choke (inches)	Pressure (psig)	Gas Rate (Mcf/d)



**TRILOBITE
TESTING, INC.**

DRILL STEM TEST REPORT

FLUID SUMMARY

CMX INC
1700N WaterFront PKWY
Bldg 300 B
ATTN: Leah Kasten

6-24-19 Edwards Co
Bornholdt #1
Job Ticket: 50946 **DST#: 2**
Test Start: 2013.03.31 @ 19:40:29

Mud and Cushion Information

Mud Type: Gel Chem	Cushion Type:	Oil API:	deg API
Mud Weight: 9.00 lb/gal	Cushion Length: ft	Water Salinity:	ppm
Viscosity: 75.00 sec/qt	Cushion Volume: bbl		
Water Loss: 11.78 in ³	Gas Cushion Type:		
Resistivity: 0.00 ohm.m	Gas Cushion Pressure: psig		
Salinity: 7000.00 ppm			
Filter Cake: 0.02 inches			

Recovery Information

Recovery Table

Length ft	Description	Volume bbl
185.00	O,M 1%oil 99%mud	0.910

Total Length: 185.00 ft Total Volume: 0.910 bbl
 Num Fluid Samples: 0 Num Gas Bombs: 0 Serial #:
 Laboratory Name: Laboratory Location:
 Recovery Comments:

Pressure vs. Time

