



DRILL STEM TEST REPORT

Prepared For: **McCoy Petroleum Corp.**

8080 E. Central Ste. 300
Wichita, KS 67206-2366

ATTN: Dave Williams

Ritter E #2-11

11-34s-8w Harper,KS

Start Date: 2013.03.20 @ 00:24:07

End Date: 2013.03.20 @ 09:46:22

Job Ticket #: 50866 DST #: 1

Trilobite Testing, Inc
PO Box 362 Hays, KS 67601
ph: 785-625-4778 fax: 785-625-5620

Printed: 2013.03.22 @ 09:41:12



TRILOBITE TESTING, INC.

DRILL STEM TEST REPORT

McCoy Petroleum Corp.

11-34s-8w Harper,KS

8080 E. Central Ste. 300
Wichita, KS 67206-2366

Ritter E #2-11

Job Ticket: 50866

DST#: 1

ATTN: Dave Williams

Test Start: 2013.03.20 @ 00:24:07

GENERAL INFORMATION:

Formation: **Ft. Scott**

Deviated: No Whipstock: ft (KB)

Time Tool Opened: 02:54:07

Time Test Ended: 09:46:22

Test Type: Conventional Bottom Hole (Initial)

Tester: Ryan Reynolds

Unit No: 48

Interval: 4476.00 ft (KB) To 4495.00 ft (KB) (TVD)

Reference Elevations: 1393.00 ft (KB)

Total Depth: 4495.00 ft (KB) (TVD)

1384.00 ft (CF)

Hole Diameter: 7.88 inches Hole Condition: Fair

KB to GR/CF: 9.00 ft

Serial #: 8790

Inside

Press @ Run Depth: 178.94 psig @ 4477.00 ft (KB)

Capacity: 8000.00 psig

Start Date: 2013.03.20

End Date: 2013.03.20

Last Calib.: 2013.03.20

Start Time: 00:24:12

End Time: 09:46:22

Time On Btm: 2013.03.20 @ 02:50:37

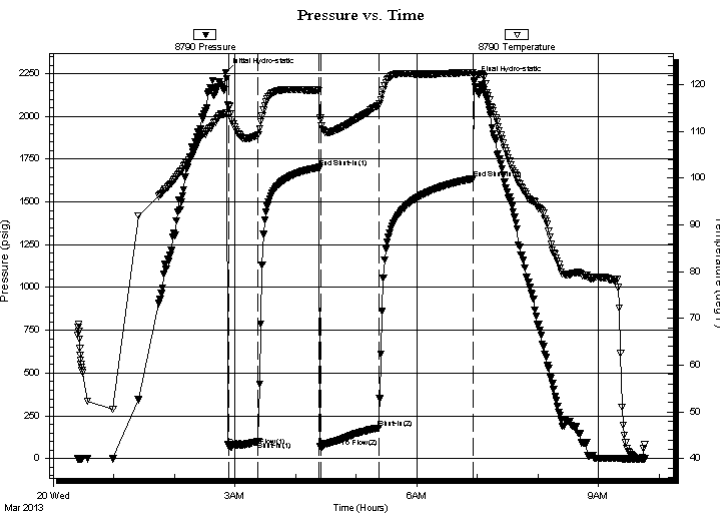
Time Off Btm: 2013.03.20 @ 06:56:37

TEST COMMENT: IF: Strong blow . BOB @ 30sec. GTS @ 15min. Gauged gas

IS: Weak blow . surf. - 1"

FF: Strong blow . BOB immed. Gauged gas

FS: Fair blow . 1/4" - 5"



PRESSURE SUMMARY

Time (Min.)	Pressure (psig)	Temp (deg F)	Annotation
0	2257.23	113.95	Initial Hydro-static
4	69.65	115.53	Open To Flow (1)
33	99.46	109.25	Shut-In(1)
93	1701.92	118.77	End Shut-In(1)
94	68.90	112.42	Open To Flow (2)
152	178.94	115.54	Shut-In(2)
245	1636.37	122.60	End Shut-In(2)
246	2211.00	122.06	Final Hydro-static

Recovery

Length (ft)	Description	Volume (bbl)
200.00	GOCM 15%gas, 20%oil, 65%mud	0.98
65.00	GMCO 10%gas, 15%mud, 75%oil	0.84
135.00	Clean oil 100%oil	1.89

Gas Rates

	Choke (inches)	Pressure (psig)	Gas Rate (Mcf/d)
First Gas Rate	0.25	16.00	48.23
Last Gas Rate	0.25	46.00	95.82
Max. Gas Rate	0.25	46.00	95.82



**TRILOBITE
TESTING, INC.**

DRILL STEM TEST REPORT

TOOL DIAGRAM

McCoy Petroleum Corp.

11-34s-8w Harper,KS

8080 E. Central Ste. 300
Wichita, KS 67206-2366

Ritter E #2-11

Job Ticket: 50866

DST#: 1

ATTN: Dave Williams

Test Start: 2013.03.20 @ 00:24:07

Tool Information

Drill Pipe:	Length: 4270.00 ft	Diameter: 3.80 inches	Volume: 59.90 bbl	Tool Weight: 2400.00 lb
Heavy Wt. Pipe:	Length: 0.00 ft	Diameter: 0.00 inches	Volume: 0.00 bbl	Weight set on Packer: 24000.00 lb
Drill Collar:	Length: 208.00 ft	Diameter: 2.25 inches	Volume: 1.02 bbl	Weight to Pull Loose: 97000.00 lb
			<u>Total Volume: 60.92 bbl</u>	Tool Chased 0.00 ft
Drill Pipe Above KB:	29.00 ft			String Weight: Initial 82500.00 lb
Depth to Top Packer:	4476.00 ft			Final 84000.00 lb
Depth to Bottom Packer:	ft			
Interval between Packers:	19.00 ft			
Tool Length:	46.00 ft			
Number of Packers:	2	Diameter: 6.50 inches		

Tool Comments:

Tool Description	Length (ft)	Serial No.	Position	Depth (ft)	Accum. Lengths
------------------	-------------	------------	----------	------------	----------------

Shut In Tool	5.00			4454.00	
Hydraulic tool	5.00			4459.00	
Jars	5.00			4464.00	
Safety Joint	3.00			4467.00	
Packer	5.00			4472.00	27.00 Bottom Of Top Packer
Packer	4.00			4476.00	
Stubb	1.00			4477.00	
Recorder	0.00	8790	Inside	4477.00	
Recorder	0.00	8792	Outside	4477.00	
Perforations	15.00			4492.00	
Bullnose	3.00			4495.00	19.00 Bottom Packers & Anchor

Total Tool Length: 46.00



**TRILOBITE
TESTING, INC.**

DRILL STEM TEST REPORT

FLUID SUMMARY

McCoy Petroleum Corp.
8080 E. Central Ste. 300
Wichita, KS 67206-2366
ATTN: Dave Williams

11-34s-8w Harper,KS
Ritter E #2-11
Job Ticket: 50866 **DST#: 1**
Test Start: 2013.03.20 @ 00:24:07

Mud and Cushion Information

Mud Type: Gel Chem	Cushion Type:	Oil API: 48 deg API
Mud Weight: 9.00 lb/gal	Cushion Length: ft	Water Salinity: 4500 ppm
Viscosity: 46.00 sec/qt	Cushion Volume: bbl	
Water Loss: 9.19 in ³	Gas Cushion Type:	
Resistivity: ohm.m	Gas Cushion Pressure: psig	
Salinity: 4500.00 ppm		
Filter Cake: 0.20 inches		

Recovery Information

Recovery Table

Length ft	Description	Volume bbl
200.00	GOCM 15%gas, 20%oil, 65%mud	0.984
65.00	GMCO 10%gas, 15%mud, 75%oil	0.839
135.00	Clean oil 100%oil	1.894

Total Length: 400.00 ft Total Volume: 3.717 bbl

Num Fluid Samples: 2

Num Gas Bombs: 1

Serial #: RR-1 / RR-2

Laboratory Name: Caraway

Laboratory Location: Liberal, KS

Recovery Comments:



**TRILOBITE
TESTING, INC.**

DRILL STEM TEST REPORT

GAS RATES

McCoy Petroleum Corp.

11-34s-8w Harper,KS

8080 E. Central Ste. 300
Wichita, KS 67206-2366

Ritter E #2-11

Job Ticket: 50866

DST#: 1

ATTN: Dave Williams

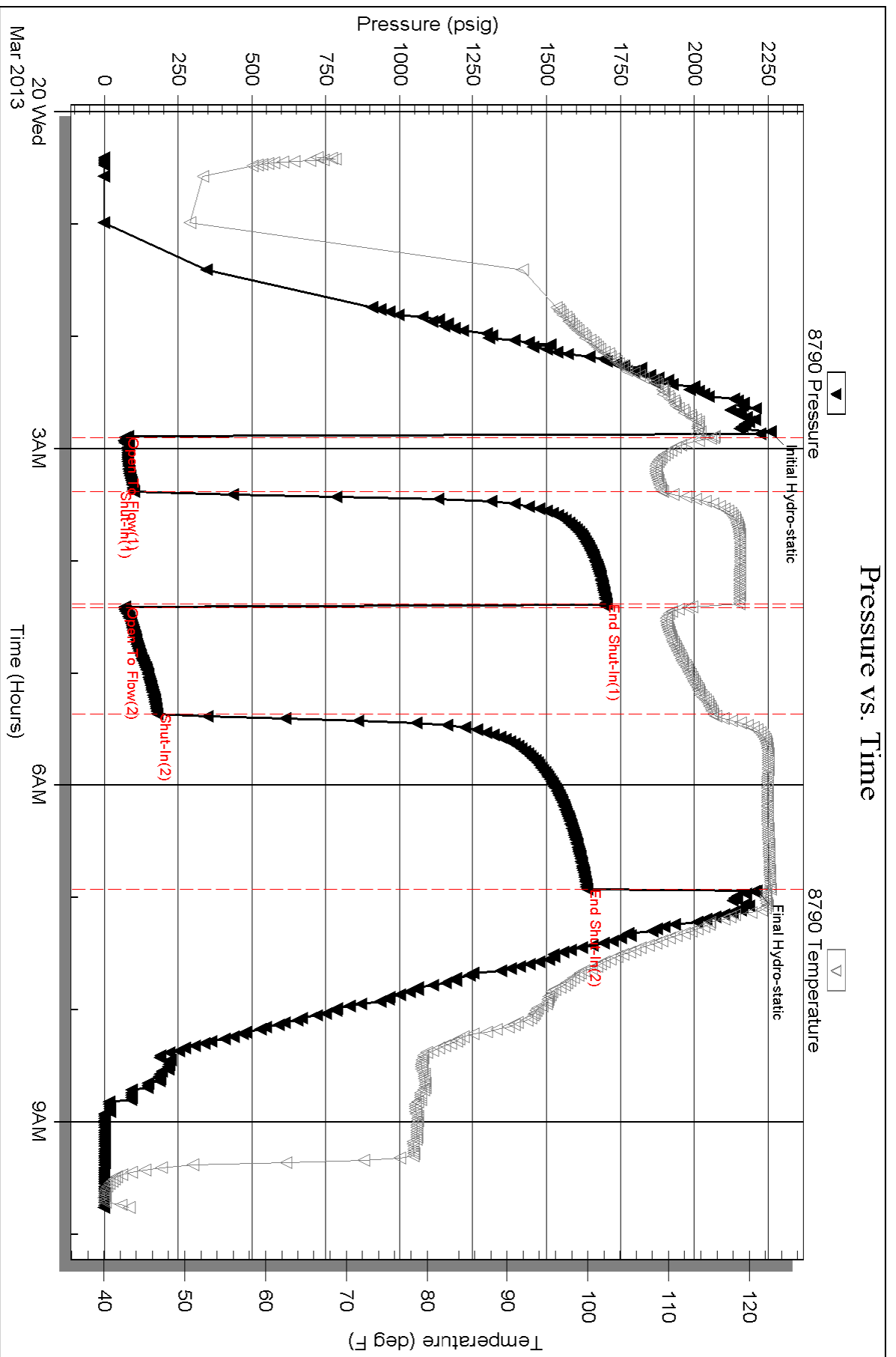
Test Start: 2013.03.20 @ 00:24:07

Gas Rates Information

Temperature: 59 (deg F)
Relative Density: 0.65
Z Factor: 0.8

Gas Rates Table

Flow Period	Elapsed Time	Choke (inches)	Pressure (psig)	Gas Rate (Mcf/d)
1	15	0.25	16.00	48.23
1	20	0.25	19.00	52.99
1	30	0.25	25.00	62.50
2	10	0.25	17.00	49.81
2	20	0.25	25.00	62.50
2	30	0.25	32.00	73.61
2	40	0.25	38.00	83.13
2	50	0.25	43.00	91.06
2	60	0.25	46.00	95.82

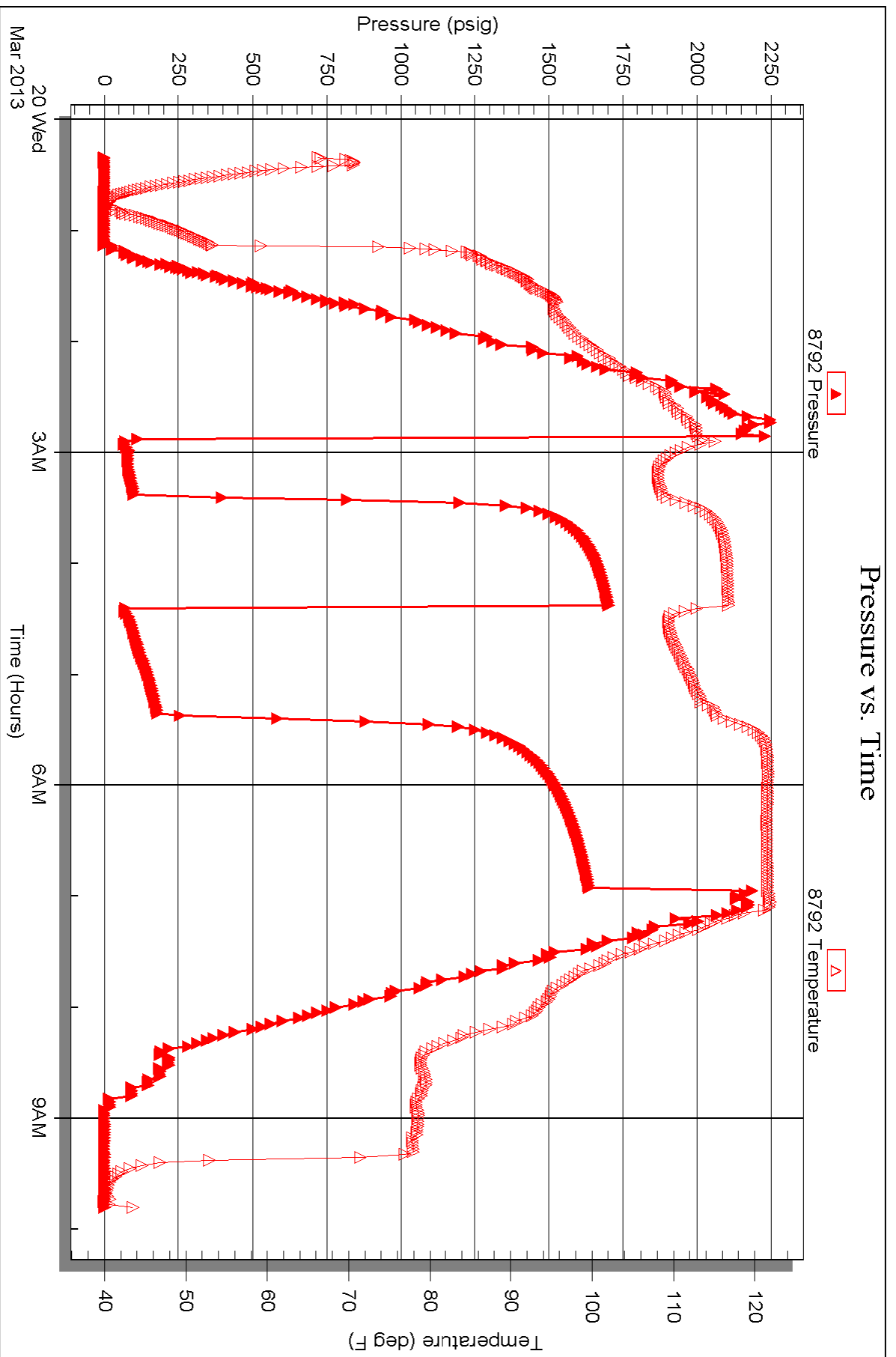


Serial #: 8792

Outside McCoy Petroleum Corp.

Ritter E#2-11

DST Test Number: 1





TRILOBITE TESTING INC.

1515 Commerce Parkway • Hays, Kansas 67601

Test Ticket

NO. 50866

4/10

Well Name & No. Ritter "E" 2-11 Test No. 1 Date 3-19-13
 Company McCoy Petro. Corp. Elevation 1393 KB 1384 GL
 Address 8080 E. Central Ste. 300 Wichita, KS 67206-2366
 Co. Rep / Geo. Dave Williams Rig Sterling #4
 Location: Sec. 11 Twp. 34s. Rge. 8w. Co. Harper State KS

Interval Tested 4476-4495 Zone Tested Ft. Scott
 Anchor Length 19' Drill Pipe Run 4270 Mud Wt. 9.3
 Top Packer Depth 4471 Drill Collars Run 208 Vis 46
 Bottom Packer Depth 4476 Wt. Pipe Run 8 WL 9.2
 Total Depth 4495 Chlorides 4500 ppm System LCM 2#

Blow Description IF: Strong blow. BoB 30sec. GTS @ 15min. Gugged gas
ISI: Weak blow. surf. - 1"
FF: Strong blow. BoB immed. Gugged gas
FSI: Fair blow. 14" - 5"

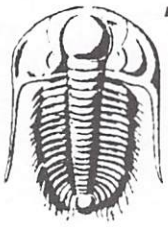
Rec	Feet of	%gas	%oil	%water	%mud
<u>135</u>	<u>Clear oil (48 grav)</u>	<u>100</u>	<u>0</u>	<u>0</u>	<u>0</u>
<u>65</u>	<u>MCO</u>	<u>10</u>	<u>75</u>	<u>15</u>	<u>0</u>
<u>200</u>	<u>GOCM</u>	<u>15</u>	<u>20</u>	<u>65</u>	<u>0</u>
Rec	Feet of	%gas	%oil	%water	%mud
Rec	Feet of	%gas	%oil	%water	%mud

Rec Total 400 BHT 123 Gravity 48 API RW N/L @ N/C °F Chlorides 4500 ppm
 Test 1250 T-On Location 2130
 Jars 250 T-Started 0024
 Safety Joint 75 T-Open 0254
 Circ Sub T-Pulled 0655
 Hourly Standby 2 1/4 225 T-Out 0946
 Mileage 175 271.25
 Sampler
 Straddle
 Shale Packer
 Extra Packer
 Extra Recorder
 Day Standby
 Accessibility
 Sub Total 2071.25

Initial Open 30
 Initial Shut-In 60
 Final Flow 60
 Final Shut-In 90

Comments _____
 Ruined Shale Packer
 Ruined Packer
 Extra Copies
 Sub Total 0
 Total 2071.25
 MP/DST Disc't _____

Approved By Dave Williams Our Representative Ryan Reynolds
 Trilobite Testing Inc. shall not be liable for damaged of any kind of the property or personnel of the one for whom a test is made, or for any loss suffered or sustained, directly or indirectly, through the use of its equipment, or its statements or opinion concerning the results of any test, tools lost or damaged in the hole shall be paid for at cost by the party for whom the test is made.



TRILOBITE TESTING INC.

P.O. Box 362 • Hays, Kansas 67601 • (785) 625-4778

GAS VOLUME REPORT

McLoy Petro. Corp.
OPERATOR

Ritter "E" 2-11
WELL NAME AND NO.

1
DST NO.

IF: Gas to Surf. @ 15 min.

Final Flow Period

Min.	Inch. of Water PSIG	Orifice Size	Field	1 ATMS	Min.	Inch. of Water PSIG	Orifice Size	Field	1 ATMS
	MCF/D			Z000		MCF/D			Z000
15	16	1/4"	45	48.227	10	17	1/4"	46.5	49.813
20	19	1/4"	49.4	52.986	20	25	5/4"	58.2	62.504
30	25	1/4"	58.2	62.504	30	32	1/4"	68.5	73.609
					40	38	1/4"	77.3	83.128
					50	43	1/4"	84.7	91.060
					60	46	1/4"	89.1	95.819

Remarks: