



DRILL STEM TEST REPORT

Prepared For: **McCoy Petroleum Corp**

8080 E central Ste 300
Wichita, KS 67206

ATTN: Evan Stone

Stewart #2-31

31-31s-3w Sumner,KS

Start Date: 2013.04.16 @ 18:42:35

End Date: 2013.04.17 @ 04:17:50

Job Ticket #: 50914 DST #: 1

Trilobite Testing, Inc

PO Box 362 Hays, KS 67601

ph: 785-625-4778 fax: 785-625-5620

Printed: 2013.04.24 @ 09:04:05



**TRILOBITE
TESTING, INC.**

DRILL STEM TEST REPORT

McCoy Petroleum Corp
8080 E central Ste 300
Wichita, KS 67206
ATTN: Evan Stone

31-31s-3w Sumner, KS

Stewart #2-31

Job Ticket: 50914

DST#: 1

Test Start: 2013.04.16 @ 18:42:35

GENERAL INFORMATION:

Formation: **Mississippi**

Deviated: No Whipstock: ft (KB)

Time Tool Opened: 21:12:05

Time Test Ended: 04:17:50

Test Type: Conventional Bottom Hole (Initial)

Tester: Leal Cason

Unit No: 45

Interval: 3980.00 ft (KB) To 4005.00 ft (KB) (TVD)

Reference Elevations: 1297.00 ft (KB)

Total Depth: 4005.00 ft (KB) (TVD)

1288.00 ft (CF)

Hole Diameter: 7.88 inches Hole Condition: Good

KB to GR/CF: 9.00 ft

Serial #: 6798 Inside

Press @ Run Depth: 72.29 psig @ 3981.00 ft (KB)

Capacity: 8000.00 psig

Start Date: 2013.04.16

End Date:

2013.04.17

Last Calib.:

2013.04.17

Start Time: 18:42:36

End Time:

04:17:50

Time On Btm:

2013.04.16 @ 21:05:50

Time Off Btm:

2013.04.17 @ 02:13:35

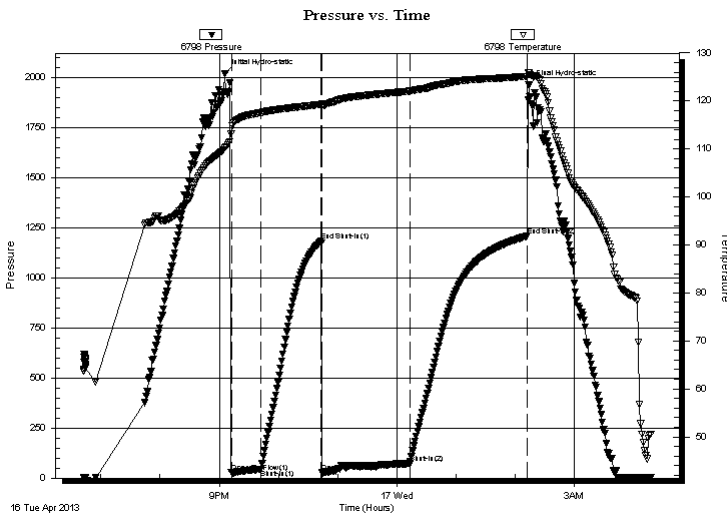
TEST COMMENT: IF: Strong Blow , BOB in 4 minutes

IS: No Blow Back

FF: Strong Blow , BOB immediate, GTS in 60 minutes, Caught Sample, TSTM

FSI: No Blow Back

PRESSURE SUMMARY



Time (Min.)	Pressure (psig)	Temp (deg F)	Annotation
0	2021.85	110.21	Initial Hydro-static
7	27.32	113.22	Open To Flow (1)
37	45.59	117.57	Shut-In(1)
98	1183.93	119.29	End Shut-In(1)
99	28.20	119.44	Open To Flow (2)
187	72.29	122.03	Shut-In(2)
307	1209.14	125.14	End Shut-In(2)
308	1963.95	125.81	Final Hydro-static

Recovery

Length (ft)	Description	Volume (bbl)
0.00	3790 GIP	0.00
178.00	GSY OWCM 66%G 5%O 5%W 24%M	0.88
2.00	Oil	0.03

Gas Rates

Choke (inches)	Pressure (psig)	Gas Rate (Mcf/d)



**TRILOBITE
TESTING, INC.**

DRILL STEM TEST REPORT

McCoy Petroleum Corp
8080 E central Ste 300
Wichita, KS 67206
ATTN: Evan Stone

31-31s-3w Sumner, KS

Stewart #2-31

Job Ticket: 50914

DST#: 1

Test Start: 2013.04.16 @ 18:42:35

GENERAL INFORMATION:

Formation: **Mississippi**

Deviated: No Whipstock: ft (KB)

Time Tool Opened: 21:12:05

Time Test Ended: 04:17:50

Test Type: Conventional Bottom Hole (Initial)

Tester: Leal Cason

Unit No: 45

Interval: 3980.00 ft (KB) To 4005.00 ft (KB) (TVD)

Reference Elevations: 1297.00 ft (KB)

Total Depth: 4005.00 ft (KB) (TVD)

1288.00 ft (CF)

Hole Diameter: 7.88 inches Hole Condition: Good

KB to GR/CF: 9.00 ft

Serial #: 8367 Outside

Press @ Run Depth: psig @ 3981.00 ft (KB)

Capacity: 8000.00 psig

Start Date: 2013.04.16

End Date:

2013.04.17

Last Calib.:

2013.04.17

Start Time: 18:42:36

End Time:

04:17:35

Time On Btm:

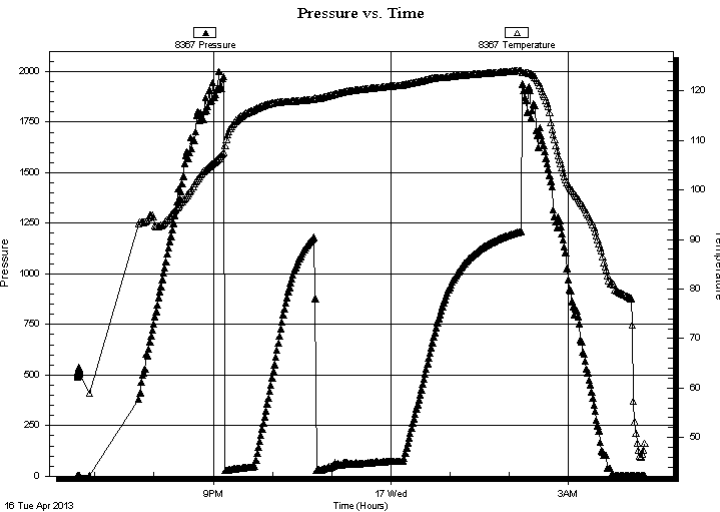
Time Off Btm:

TEST COMMENT: IF: Strong Blow , BOB in 4 minutes

IS: No Blow Back

FF: Strong Blow , BOB immediate, GTS in 60 minutes, Caught Sample, TSTM

FS: No Blow Back



PRESSURE SUMMARY

Time (Min.)	Pressure (psig)	Temp (deg F)	Annotation

Recovery

Length (ft)	Description	Volume (bbl)
0.00	3790 GIP	0.00
178.00	GSY OWCM 66%G 5%O 5%W 24%M	0.88
2.00	Oil	0.03

Gas Rates

Choke (inches)	Pressure (psig)	Gas Rate (Mcf/d)



**TRILOBITE
TESTING, INC.**

DRILL STEM TEST REPORT

TOOL DIAGRAM

McCoy Petroleum Corp
8080 E central Ste 300
Wichita, KS 67206
ATTN: Evan Stone

31-31s-3w Sumner,KS
Stewart #2-31
Job Ticket: 50914 **DST#: 1**
Test Start: 2013.04.16 @ 18:42:35

Tool Information

Drill Pipe:	Length: 3792.00 ft	Diameter: 3.80 inches	Volume: 53.19 bbl	Tool Weight: 2100.00 lb
Heavy Wt. Pipe:	Length: 0.00 ft	Diameter: 0.00 inches	Volume: 0.00 bbl	Weight set on Packer: 25000.00 lb
Drill Collar:	Length: 178.00 ft	Diameter: 2.25 inches	Volume: 0.88 bbl	Weight to Pull Loose: 80000.00 lb
			<u>Total Volume: 54.07 bbl</u>	Tool Chased ft
Drill Pipe Above KB:	17.00 ft			String Weight: Initial 72000.00 lb
Depth to Top Packer:	3980.00 ft			Final 74000.00 lb
Depth to Bottom Packer:	ft			
Interval between Packers:	25.00 ft			
Tool Length:	52.00 ft			
Number of Packers:	2	Diameter: 6.75 inches		

Tool Comments:

Tool Description	Length (ft)	Serial No.	Position	Depth (ft)	Accum. Lengths
-------------------------	--------------------	-------------------	-----------------	-------------------	-----------------------

Shut In Tool	5.00			3958.00	
Hydraulic tool	5.00			3963.00	
Jars	5.00			3968.00	
Safety Joint	2.00			3970.00	
Packer	5.00			3975.00	27.00 Bottom Of Top Packer
Packer	5.00			3980.00	
Stubb	1.00			3981.00	
Recorder	0.00	6798	Inside	3981.00	
Recorder	0.00	8367	Outside	3981.00	
Perforations	21.00			4002.00	
Bullnose	3.00			4005.00	25.00 Bottom Packers & Anchor

Total Tool Length: 52.00



**TRILOBITE
TESTING, INC.**

DRILL STEM TEST REPORT

FLUID SUMMARY

McCoy Petroleum Corp
8080 E central Ste 300
Wichita, KS 67206
ATTN: Evan Stone

31-31s-3w Sumner,KS
Stewart #2-31
Job Ticket: 50914 **DST#: 1**
Test Start: 2013.04.16 @ 18:42:35

Mud and Cushion Information

Mud Type: Gel Chem	Cushion Type:	Oil API:	deg API
Mud Weight: 9.00 lb/gal	Cushion Length: ft	Water Salinity:	ppm
Viscosity: 52.00 sec/qt	Cushion Volume: bbl		
Water Loss: 9.57 in ³	Gas Cushion Type:		
Resistivity: ohm.m	Gas Cushion Pressure: psig		
Salinity: 3500.00 ppm			
Filter Cake: 0.02 inches			

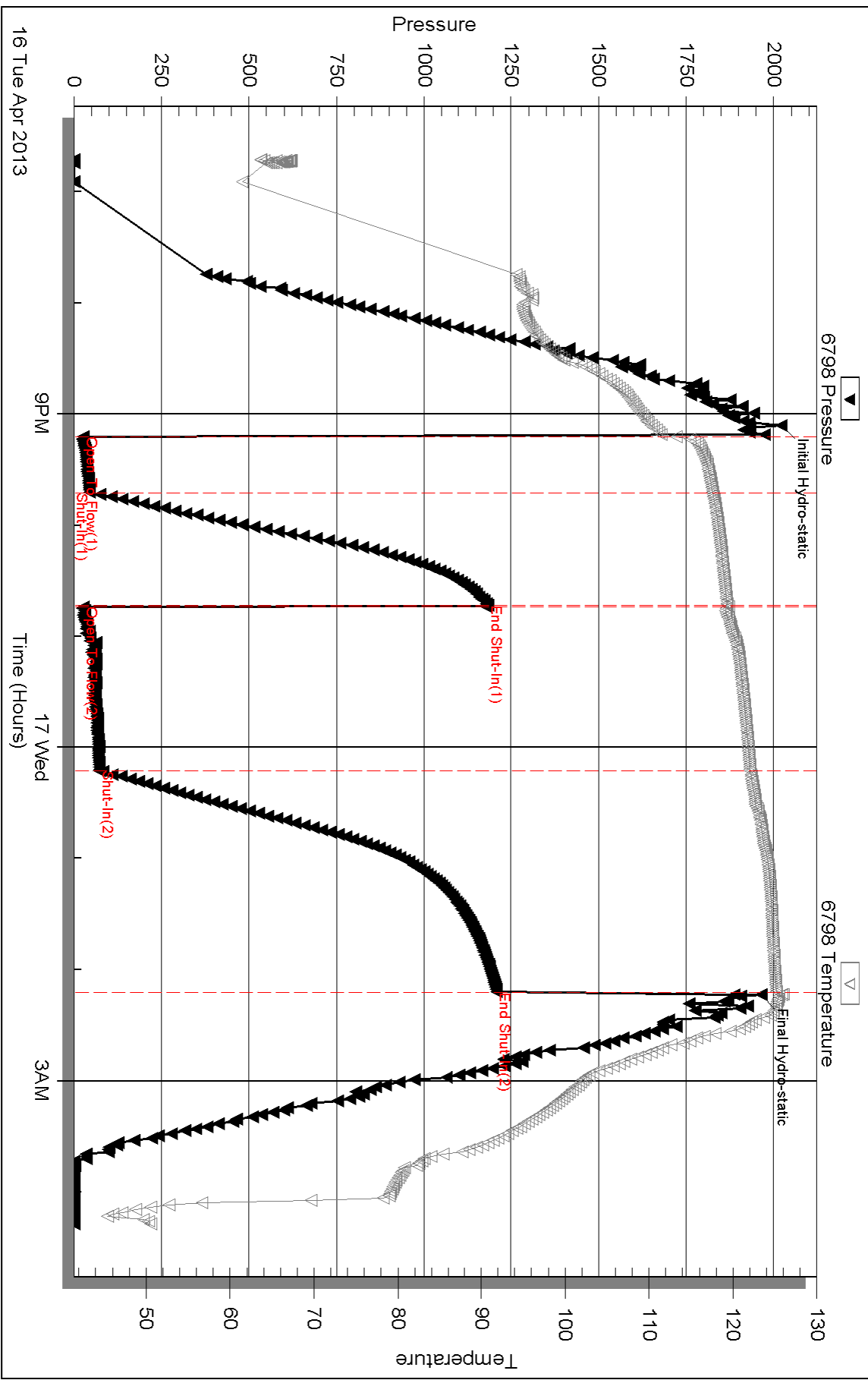
Recovery Information

Recovery Table

Length ft	Description	Volume bbl
0.00	3790 GIP	0.000
178.00	GSY OWCM 66%G 5%O 5%W 24%M	0.875
2.00	Oil	0.028

Total Length: 180.00 ft Total Volume: 0.903 bbl
 Num Fluid Samples: 0 Num Gas Bombs: 0 Serial #:
 Laboratory Name: Laboratory Location:
 Recovery Comments:

Pressure vs. Time

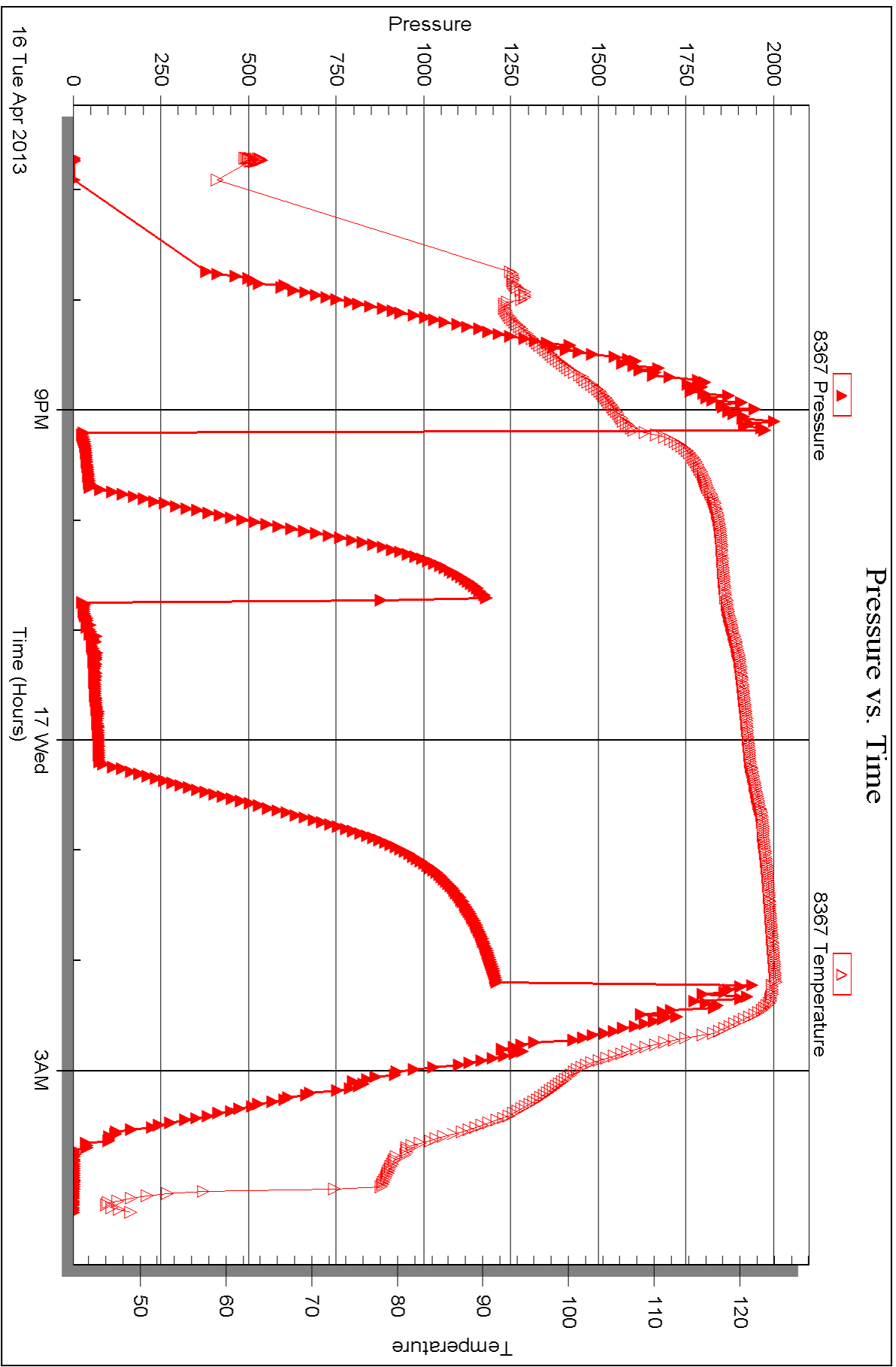


Serial #: 8367

Outside McCoy Petroleum Corp

Slew art #2-31

DST Test Number: 1





DRILL STEM TEST REPORT

Prepared For: **McCoy Petroleum Corp**

8080 E central Ste 300
Wichita, KS 67206

ATTN: Evan Stone

Stewart #2-31

31-31s-3w Sumner,KS

Start Date: 2013.04.19 @ 02:08:15

End Date: 2013.04.19 @ 11:22:45

Job Ticket #: 50915 DST #: 2

Trilobite Testing, Inc

PO Box 362 Hays, KS 67601

ph: 785-625-4778 fax: 785-625-5620

Printed: 2013.04.24 @ 09:03:22



**TRILOBITE
TESTING, INC.**

DRILL STEM TEST REPORT

McCoy Petroleum Corp
8080 E Central Ste 300
Wichita, KS 67206
ATTN: Evan Stone

31-31s-3w Sumner, KS

Stewart #2-31

Job Ticket: 50915

DST#: 2

Test Start: 2013.04.19 @ 02:08:15

GENERAL INFORMATION:

Formation: **Simpson**

Deviated: No Whipstock: ft (KB)

Time Tool Opened: 04:50:15

Time Test Ended: 11:22:45

Test Type: Conventional Bottom Hole (Reset)

Tester: Leal Cason

Unit No: 45

Interval: 4448.00 ft (KB) To 4458.00 ft (KB) (TVD)

Reference Elevations: 1297.00 ft (KB)

Total Depth: 4458.00 ft (KB) (TVD)

1288.00 ft (CF)

Hole Diameter: 7.88 inches Hole Condition: Good

KB to GR/CF: 9.00 ft

Serial #: 6798

Inside

Press @ Run Depth: 377.46 psig @ 4449.00 ft (KB)

Capacity: 8000.00 psig

Start Date: 2013.04.19

End Date:

2013.04.19

Last Calib.:

2013.04.19

Start Time: 02:08:16

End Time:

11:22:45

Time On Btm:

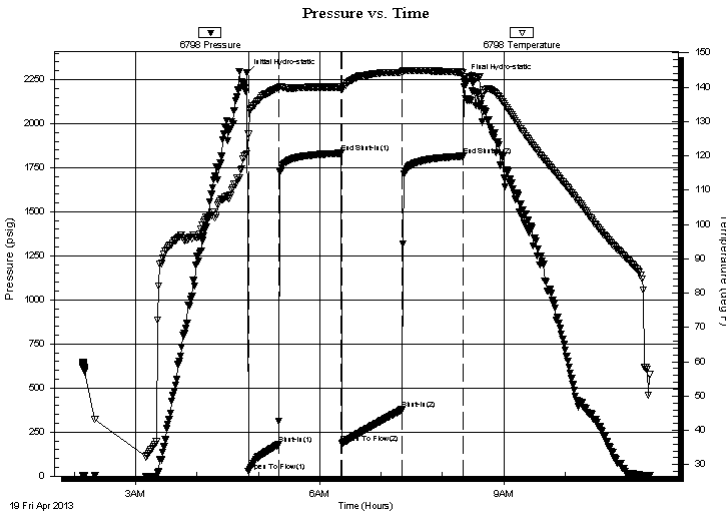
2013.04.19 @ 04:49:00

Time Off Btm:

2013.04.19 @ 08:21:15

TEST COMMENT: IF: Fair Blow, BOB in 19 minutes
IS: Very Weak Surface Blow Back
FF: Weak Blow, BOB in 28 minutes
FS: Weak Surface Blow Back

PRESSURE SUMMARY



Time (Min.)	Pressure (psig)	Temp (deg F)	Annotation
0	2285.96	120.71	Initial Hydro-static
2	28.19	126.29	Open To Flow (1)
31	181.35	139.98	Shut-In(1)
92	1832.32	140.03	End Shut-In(1)
93	185.37	139.42	Open To Flow (2)
152	377.46	144.38	Shut-In(2)
212	1815.84	144.34	End Shut-In(2)
213	2256.93	143.04	Final Hydro-static

Recovery

Length (ft)	Description	Volume (bbl)
682.00	Water	7.95
68.00	MCW 40%M 60%W	0.95

Gas Rates

Choke (inches)	Pressure (psig)	Gas Rate (Mcf/d)

* Recovery from multiple tests



TRILOBITE TESTING, INC.

DRILL STEM TEST REPORT

McCoy Petroleum Corp
 8080 E central Ste 300
 Wichita, KS 67206
 ATTN: Evan Stone

31-31s-3w Sumner, KS

Stewart #2-31

Job Ticket: 50915

DST#: 2

Test Start: 2013.04.19 @ 02:08:15

GENERAL INFORMATION:

Formation: **Simpson**
 Deviated: No Whipstock: ft (KB)
 Time Tool Opened: 04:50:15
 Time Test Ended: 11:22:45
 Interval: **4448.00 ft (KB) To 4458.00 ft (KB) (TVD)**
 Total Depth: 4458.00 ft (KB) (TVD)
 Hole Diameter: 7.88 inches Hole Condition: Good
 Test Type: Conventional Bottom Hole (Reset)
 Tester: Leal Cason
 Unit No: 45
 Reference Elevations: 1297.00 ft (KB)
 1288.00 ft (CF)
 KB to GR/CF: 9.00 ft

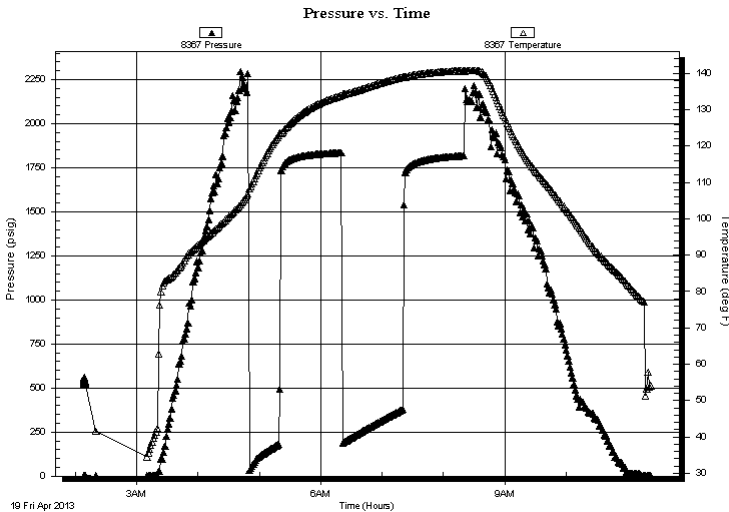
Serial #: 8367

Outside

Press @ RunDepth: psig @ 4449.00 ft (KB) Capacity: 8000.00 psig
 Start Date: 2013.04.19 End Date: 2013.04.19 Last Calib.: 2013.04.19
 Start Time: 02:08:16 End Time: 11:22:45 Time On Btm:
 Time Off Btm:

TEST COMMENT: IF: Fair Blow , BOB in 19 minutes
 IS: Very Weak Surface Blow Back
 FF: Weak Blow , BOB in 28 minutes
 FS: Weak Surface Blow Back

PRESSURE SUMMARY



Time (Min.)	Pressure (psig)	Temp (deg F)	Annotation

Recovery

Length (ft)	Description	Volume (bbl)
682.00	Water	7.95
68.00	MCW 40%M 60%W	0.95

Gas Rates

	Choke (inches)	Pressure (psig)	Gas Rate (Mcf/d)

* Recovery from multiple tests



**TRILOBITE
TESTING, INC.**

DRILL STEM TEST REPORT

TOOL DIAGRAM

McCoy Petroleum Corp
8080 E central Ste 300
Wichita, KS 67206
ATTN: Evan Stone

31-31s-3w Sumner,KS
Stewart #2-31
Job Ticket: 50915 **DST#: 2**
Test Start: 2013.04.19 @ 02:08:15

Tool Information

Drill Pipe:	Length: 4270.00 ft	Diameter: 3.80 inches	Volume: 59.90 bbl	Tool Weight: 2100.00 lb
Heavy Wt. Pipe:	Length: 0.00 ft	Diameter: 0.00 inches	Volume: 0.00 bbl	Weight set on Packer: 25000.00 lb
Drill Collar:	Length: 178.00 ft	Diameter: 2.25 inches	Volume: 0.88 bbl	Weight to Pull Loose: 80000.00 lb
			<u>Total Volume: 60.78 bbl</u>	Tool Chased ft
Drill Pipe Above KB:	27.00 ft			String Weight: Initial 76000.00 lb
Depth to Top Packer:	4448.00 ft			Final 78000.00 lb
Depth to Bottom Packer:	ft			
Interval between Packers:	10.00 ft			
Tool Length:	37.00 ft			
Number of Packers:	2	Diameter: 6.75 inches		

Tool Comments:

Tool Description	Length (ft)	Serial No.	Position	Depth (ft)	Accum. Lengths
-------------------------	--------------------	-------------------	-----------------	-------------------	-----------------------

Shut In Tool	5.00			4426.00	
Hydraulic tool	5.00			4431.00	
Jars	5.00			4436.00	
Safety Joint	2.00			4438.00	
Packer	5.00			4443.00	27.00 Bottom Of Top Packer
Packer	5.00			4448.00	
Stubb	1.00			4449.00	
Recorder	0.00	6798	Inside	4449.00	
Recorder	0.00	8367	Outside	4449.00	
Perforations	6.00			4455.00	
Bullnose	3.00			4458.00	10.00 Bottom Packers & Anchor

Total Tool Length: 37.00



**TRILOBITE
TESTING, INC.**

DRILL STEM TEST REPORT

FLUID SUMMARY

McCoy Petroleum Corp
8080 E central Ste 300
Wichita, KS 67206
ATTN: Evan Stone

31-31s-3w Sumner,KS
Stewart #2-31
Job Ticket: 50915 **DST#: 2**
Test Start: 2013.04.19 @ 02:08:15

Mud and Cushion Information

Mud Type: Gel Chem	Cushion Type:	Oil API:	deg API
Mud Weight: 9.00 lb/gal	Cushion Length: ft	Water Salinity:	95000 ppm
Viscosity: 57.00 sec/qt	Cushion Volume: bbl		
Water Loss: 10.38 in ³	Gas Cushion Type:		
Resistivity: ohm.m	Gas Cushion Pressure: psig		
Salinity: 4000.00 ppm			
Filter Cake: 0.02 inches			

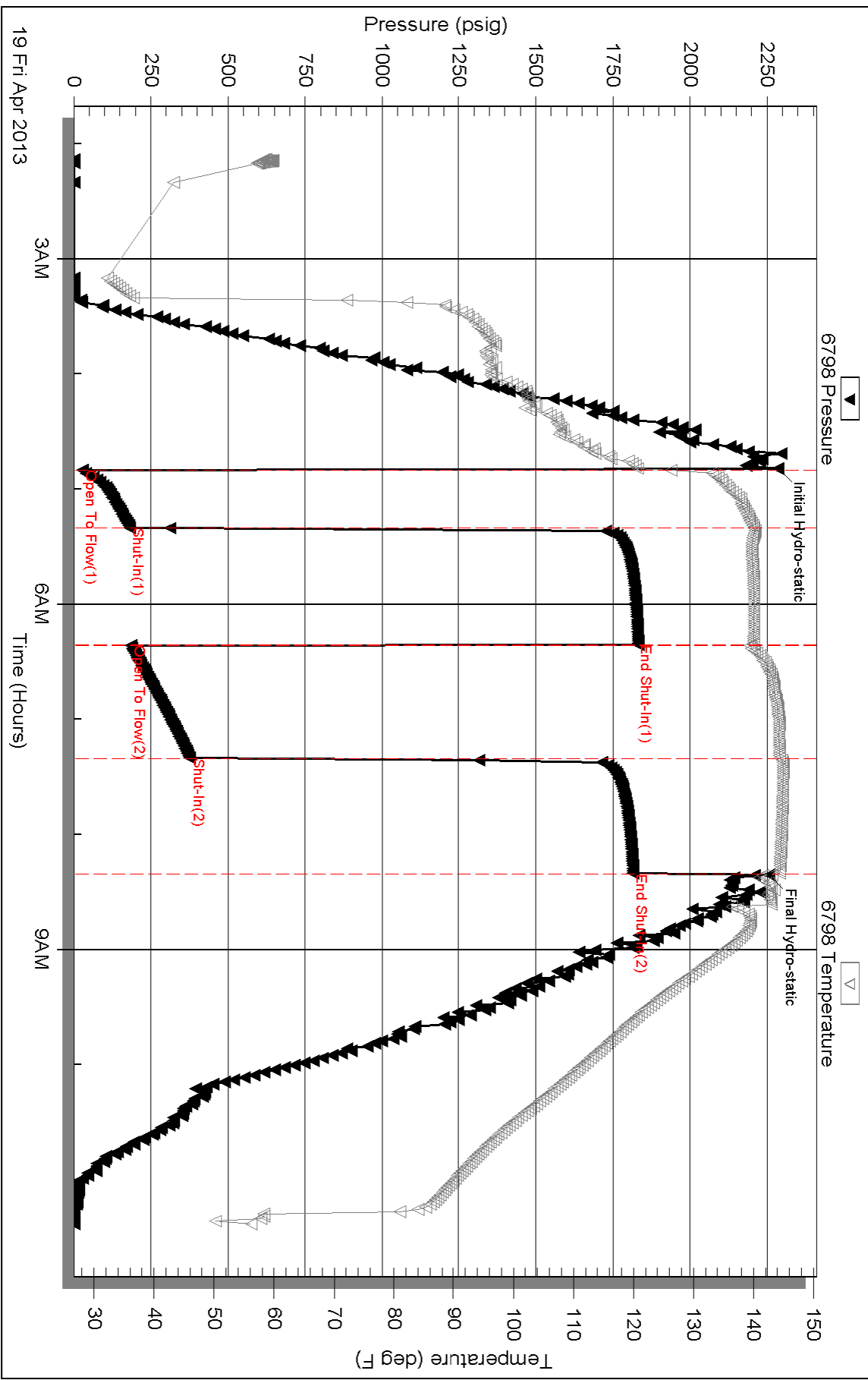
Recovery Information

Recovery Table

Length ft	Description	Volume bbl
682.00	Water	7.945
68.00	MCW 40%M 60%W	0.954

Total Length: 750.00 ft Total Volume: 8.899 bbl
 Num Fluid Samples: 0 Num Gas Bombs: 0 Serial #:
 Laboratory Name: Laboratory Location:
 Recovery Comments: RW w as .12 @ 54 degrees

Pressure vs. Time



Serial #: 8367

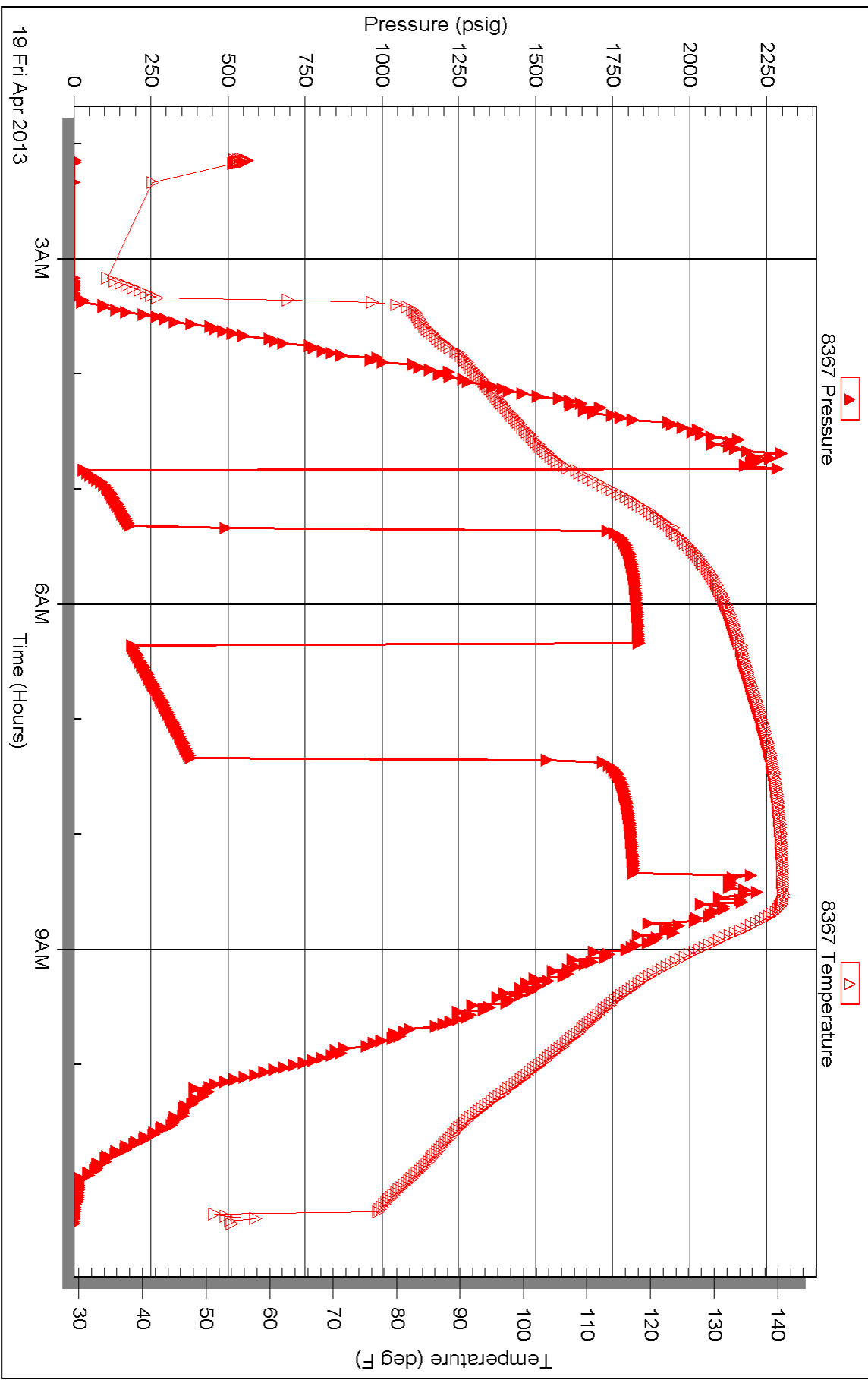
Outside

McCoy Petroleum Corp

Slew art #2-31

DST Test Number: 2

Pressure vs. Time



Triobite Testing, Inc

Ref. No: 50915

Printed: 2013.04.24 @ 09:03:26



TRILOBITE TESTING INC.

1515 Commerce Parkway • Hays, Kansas 67601

Test Ticket

NO. 50914

4/10

Well Name & No. Stewart A 2-31 Test No. 1 Date 04/16/13
 Company McCoy Petroleum Corp Elevation 1297 KB 1288 GL
 Address 8080 E Central Ste 300 Wichita, KS 67206
 Co. Rep / Geo. Evan Stone Rig Sterling 4
 Location: Sec. 31 Twp. 31S Rge. 3W Co. Sumner State KS

Interval Tested 3980 - 4005 Zone Tested Mississippi
 Anchor Length 25 ~~3980~~ Drill Pipe Run 3792 Mud Wt. 9.3
 Top Packer Depth 3975 ~~3980~~ Drill Collars Run 179 Vis 52
 Bottom Packer Depth 3980 ~~3980~~ Wt. Pipe Run 0 WL 9.6
 Total Depth 4005 Chlorides 3500 ppm System LCM 4

Blow Description IF: Strong Blow, BOB in 4 minutes
ISI: NO Blow Back

FF: Strong Blow, BOB Immediate, GTS in 60 min, caught sample, TSTM
FSI: NO Blow Back

Rec	Feet of	%gas	%oil	%water	%mud
<u>3790</u>	<u>GIP</u>				
<u>2</u>	<u>oil</u>				
<u>178</u>	<u>GSP OWCM</u>	<u>66</u>	<u>5</u>	<u>5</u>	<u>24</u>

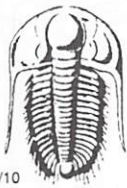
Rec Total 180 BHT 126 Gravity NIC API RW NIC @ NIC °F Chlorides NIC ppm

(A) Initial Hydrostatic 2022 Test 1250 T-On Location 18:00
 (B) First Initial Flow 27 Jars 250 T-Started 18:42
 (C) First Final Flow 46 Safety Joint 75 T-Open 21:12
 (D) Initial Shut-In 1184 Circ Sub _____ T-Pulled 02:12
 (E) Second Initial Flow 28 Hourly Standby _____ T-Out 04:17
 (F) Second Final Flow 72 Mileage (180) 279 Comments note 1
 (G) Final Shut-In 1209 Sampler _____
 (H) Final Hydrostatic 1964 Straddle _____

Ruined Shale Packer _____
 Shale Packer _____
 Ruined Packer _____
 Extra Packer _____
 Extra Copies _____
 Extra Recorder _____
 Sub Total 0
 Day Standby _____
 Total 1854
 Accessibility _____
 MP/DST Disc't _____
 Sub Total 1854

Approved By [Signature] Our Representative [Signature]

Trilobite Testing Inc. shall not be liable for damaged of any kind of the property or personnel of the one for whom a test is made, or for any loss suffered or sustained, directly or indirectly, through the use of its equipment, or its statements or opinion concerning the results of any test, tools lost or damaged in the hole shall be paid for at cost by the party for whom the test is made.



TRILOBITE TESTING INC.

1515 Commerce Parkway • Hays, Kansas 67601

Test Ticket

NO. 50915

4/10

Well Name & No. Stewart A 2-31 Test No. 2 Date 04/19/13
 Company McCoy Petroleum Corp Elevation 1297 KB 1288 GL
 Address 8080 E Central Ste 300 Wichita, KS 67206
 Co. Rep / Geo. Evan Stone Rig Sterling 4
 Location: Sec. 31 Twp. 31S Rge. 3W Co. Sumner State KS

Interval Tested 4448 - 4458 Zone Tested Simpson
 Anchor Length 10 Drill Pipe Run 4270 Mud Wt. 9.4
 Top Packer Depth 4443 Drill Collars Run 178 Vis 57
 Bottom Packer Depth 4448 Wt. Pipe Run 0 WL 10.4
 Total Depth 4458 Chlorides 4000 ppm System LCM 6

Blow Description IF: Fair Blow, BOB in 19 minutes
ISI: Very weak surface blow back
FF: weak blow, BOB in 28 minutes
FSI: weak surface blow back

Rec	Feet of	%gas	%oil	%water	%mud
<u>68</u>	<u>MCW</u>		<u>60</u>	<u>40</u>	
<u>682</u>	<u>water</u>				

Rec Total 750 BHT 143 Gravity N/C API RW .12 @ 54 °F Chlorides 95000 ppm

(A) Initial Hydrostatic <u>2286</u>	<input checked="" type="checkbox"/> Test <u>1250</u>	T-On Location <u>01:30</u>
(B) First Initial Flow <u>28</u>	<input checked="" type="checkbox"/> Jars <u>250</u>	T-Started <u>02:08</u>
(C) First Final Flow <u>181</u>	<input checked="" type="checkbox"/> Safety Joint <u>75</u>	T-Open <u>04:50</u>
(D) Initial Shut-In <u>1832</u>	<input type="checkbox"/> Circ Sub	T-Pulled <u>08:20</u>
(E) Second Initial Flow <u>185</u>	<input type="checkbox"/> Hourly Standby	T-Out <u>11:22</u>
(F) Second Final Flow <u>377</u>	<input checked="" type="checkbox"/> Mileage <u>(180)</u> <u>279</u>	Comments <u>Motel</u>
(G) Final Shut-In <u>1816</u>	<input type="checkbox"/> Sampler	
(H) Final Hydrostatic <u>2257</u>	<input type="checkbox"/> Straddle	<input type="checkbox"/> Ruined Shale Packer

Initial Open <u>30</u>	<input type="checkbox"/> Shale Packer	<input type="checkbox"/> Ruined Packer
Initial Shut-In <u>60</u>	<input type="checkbox"/> Extra Packer	<input type="checkbox"/> Extra Copies
Final Flow <u>60</u>	<input type="checkbox"/> Extra Recorder	Sub Total <u>708.33</u>
Final Shut-In <u>60</u>	<input checked="" type="checkbox"/> Day Standby <u>1</u> 1d 21.25	Total <u>2562.33</u>
	<input type="checkbox"/> Accessibility	MP/DST Disc't
	Sub Total <u>1854</u>	

Approved By [Signature] Our Representative [Signature]

Trilobite Testing Inc. shall not be liable for damaged of any kind of the property or personnel of the one for whom a test is made, or for any loss suffered or sustained, directly or indirectly, through the use of its equipment, or its statements or opinion concerning the results of any test, tools lost or damaged in the hole shall be paid for at cost by the party for whom the test is made.