



TRILOBITE TESTING, INC.

DRILL STEM TEST REPORT

Berexco, LLC
 2020 N. Bramblewood
 Wichita, KS 67206
 ATTN: Bryan Bynog

9/1s/37w Cheyenne KS
Mears 'B' #1-9
 Job Ticket: 50566 **DST#: 4**
 Test Start: 2013.03.06 @ 09:37:00

GENERAL INFORMATION:

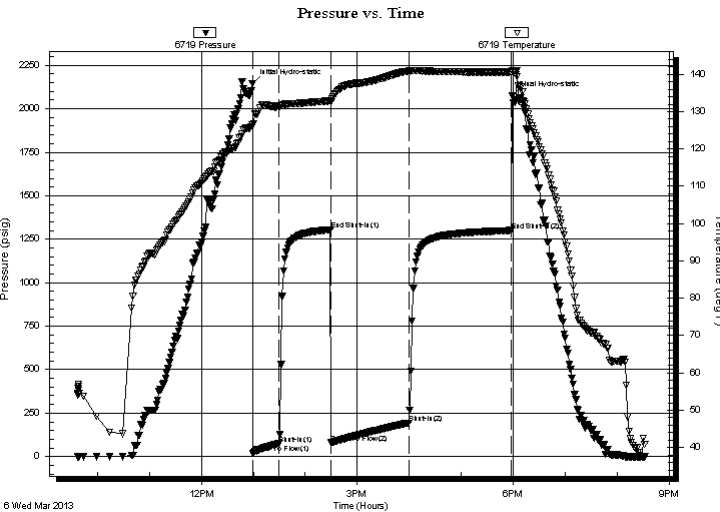
Formation: **LKC "E"**
 Deviated: No Whipstock: ft (KB)
 Time Tool Opened: 12:59:30
 Time Test Ended: 20:32:00
 Interval: **4358.00 ft (KB) To 4415.00 ft (KB) (TVD)**
 Total Depth: 4415.00 ft (KB) (TVD)
 Hole Diameter: 7.88 inches Hole Condition: Fair
 Test Type: Conventional Bottom Hole (Reset)
 Tester: James Winder
 Unit No: 57
 Reference Elevations: 3237.00 ft (KB)
 3226.00 ft (CF)
 KB to GR/CF: 11.00 ft

Serial #: 6719

Inside

Press @ Run Depth: 193.12 psig @ 4359.00 ft (KB) Capacity: 8000.00 psig
 Start Date: 2013.03.06 End Date: 2013.03.06 Last Calib.: 2013.03.06
 Start Time: 09:37:05 End Time: 20:32:00 Time On Btm: 2013.03.06 @ 12:59:00
 Time Off Btm: 2013.03.06 @ 17:59:00

TEST COMMENT: 30 - IF: Blow built to 5"
 60 - IS: Bled off, No blow back
 90 - FF: Blow started at 3 min., built to 9"
 120 - FS: Bled off, No blow back



PRESSURE SUMMARY

Time (Min.)	Pressure (psig)	Temp (deg F)	Annotation
0	2144.77	126.56	Initial Hydro-static
1	20.82	126.45	Open To Flow (1)
31	73.26	131.47	Shut-In(1)
91	1304.25	132.89	End Shut-In(1)
91	79.29	132.64	Open To Flow (2)
181	193.12	140.83	Shut-In(2)
299	1300.00	140.64	End Shut-In(2)
300	2072.86	141.04	Final Hydro-static

Recovery

Length (ft)	Description	Volume (bbl)
120.00	SO/MW 53%w , 45%o, 2%g	0.59
180.00	SO/WCM 69%o, 26%w , 4%g, 1%g	0.89
65.00	OWCM 80%o, 10%g, 10%w	0.32
45.00	CO 98%o, 2%g	0.22
0.00	GIP = 10'+	0.00

* Recovery from multiple tests

Gas Rates

Choke (inches)	Pressure (psig)	Gas Rate (Mcf/d)



**TRILOBITE
TESTING, INC.**

DRILL STEM TEST REPORT

FLUID SUMMARY

Berexco, LLC

9/1s/37w Cheyenne KS

2020 N. Bramblewood
Wichita, KS 67206

Mears 'B' #1-9

Job Ticket: 50566

DST#: 4

ATTN: Bryan Bynog

Test Start: 2013.03.06 @ 09:37:00

Mud and Cushion Information

Mud Type: Gel Chem

Cushion Type:

Oil API:

38.2 deg API

Mud Weight: 9.00 lb/gal

Cushion Length:

ft

Water Salinity:

20000 ppm

Viscosity: 58.00 sec/qt

Cushion Volume:

bbbl

Water Loss: 7.20 in³

Gas Cushion Type:

Resistivity: ohm.m

Gas Cushion Pressure:

psig

Salinity: 3300.00 ppm

Filter Cake: 2.00 inches

Recovery Information

Recovery Table

Length ft	Description	Volume bbbl
120.00	SO/MW 53%w , 45%m, 2%o	0.590
180.00	SO/WCM 69%m, 26%w , 4%o, 1%g	0.885
65.00	OWCM 80%m, 10%o, 10%w	0.320
45.00	CO 98%o, 2%m	0.221
0.00	GIP = 10'+	0.000

Total Length: 410.00 ft Total Volume: 2.016 bbl

Num Fluid Samples: 0

Num Gas Bombs: 0

Serial #:

Laboratory Name:

Laboratory Location:

Recovery Comments: Gravity = 35.8 api @ 36 deg F Corrected Gravity = 38.2 api

RW = .367 ohms @ 62.8 deg F Chlorides = 20,000 ppm

Pressure vs. Time

