



TRILOBITE TESTING, INC.

DRILL STEM TEST REPORT

Berexco, LLC
 2020 N. Bramblewood
 Wichita, KS 67206
 ATTN: Bryan Bynog

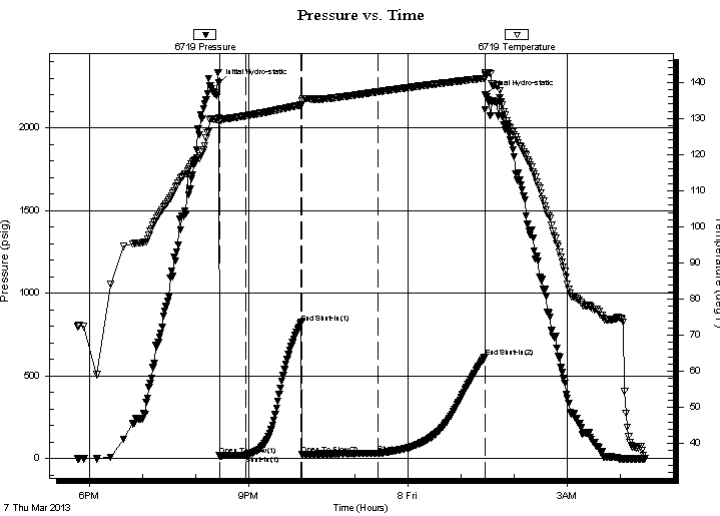
9/1s/37w Cheyenne KS
Mears 'B' #1-9
 Job Ticket: 50567 **DST#: 5**
 Test Start: 2013.03.07 @ 17:47:00

GENERAL INFORMATION:

Formation: **Pawnee**
 Deviated: No Whipstock: ft (KB)
 Time Tool Opened: 20:27:00
 Time Test Ended: 04:27:30
 Interval: **4560.00 ft (KB) To 4600.00 ft (KB) (TVD)**
 Total Depth: 4600.00 ft (KB) (TVD)
 Hole Diameter: 7.88 inches Hole Condition: Fair
 Test Type: Conventional Bottom Hole (Reset)
 Tester: James Winder
 Unit No: 57
 Reference Elevations: 3237.00 ft (KB)
 3226.00 ft (CF)
 KB to GR/CF: 11.00 ft

Serial #: 6719 Inside
 Press @ Run Depth: 32.59 psig @ 4561.00 ft (KB) Capacity: 8000.00 psig
 Start Date: 2013.03.07 End Date: 2013.03.08 Last Calib.: 2013.03.08
 Start Time: 17:47:05 End Time: 04:27:30 Time On Btm: 2013.03.07 @ 20:26:30
 Time Off Btm: 2013.03.08 @ 01:27:30

TEST COMMENT: 30 - IF: Blow built to 1/4", slowly died back, dead at 30 min.
 60 - IS: No blow back
 90 - FF: No blow
 120 - FS: No blow back



PRESSURE SUMMARY

Time (Min.)	Pressure (psig)	Temp (deg F)	Annotation
0	2270.51	130.11	Initial Hydro-static
1	17.01	129.52	Open To Flow (1)
30	21.80	130.68	Shut-In(1)
93	822.82	133.70	End Shut-In(1)
94	26.04	134.79	Open To Flow (2)
179	32.59	137.33	Shut-In(2)
300	611.88	141.11	End Shut-In(2)
301	2201.98	142.73	Final Hydro-static

Recovery

Length (ft)	Description	Volume (bbl)
30.00	OCM 83% m, 15% o, 2% g	0.15
0.00	GIP = 30'	0.00

* Recovery from multiple tests

Gas Rates

Choke (inches)	Pressure (psig)	Gas Rate (Mcf/d)



**TRILOBITE
TESTING, INC.**

DRILL STEM TEST REPORT

FLUID SUMMARY

Berexco, LLC

9/1s/37w Cheyenne KS

2020 N. Bramblewood
Wichita, KS 67206

Mears 'B' #1-9

Job Ticket: 50567

DST#: 5

ATTN: Bryan Bynog

Test Start: 2013.03.07 @ 17:47:00

Mud and Cushion Information

Mud Type: Gel Chem

Cushion Type:

Oil API:

deg API

Mud Weight: 9.00 lb/gal

Cushion Length:

ft

Water Salinity:

ppm

Viscosity: 60.00 sec/qt

Cushion Volume:

bbbl

Water Loss: 9.58 in³

Gas Cushion Type:

Resistivity: ohm.m

Gas Cushion Pressure:

psig

Salinity: 3700.00 ppm

Filter Cake: 2.00 inches

Recovery Information

Recovery Table

Length ft	Description	Volume bbl
30.00	OCM 83% _m , 15% _o , 2% _g	0.148
0.00	GIP = 30'	0.000

Total Length: 30.00 ft Total Volume: 0.148 bbl

Num Fluid Samples: 0

Num Gas Bombs: 0

Serial #:

Laboratory Name:

Laboratory Location:

Recovery Comments:

Pressure vs. Time

