



DRILL STEM TEST REPORT

Prepared For: **Downing-Nelson OilCo Inc**

PO Box 1019
Hays KS 67601

ATTN: Ron Nelson

Sunley-Rohr #1-13

13-14s-19w Ellis,KS

Start Date: 2013.05.18 @ 22:20:24

End Date: 2013.05.19 @ 03:30:18

Job Ticket #: 52078 DST #: 1

Trilobite Testing, Inc

PO Box 362 Hays, KS 67601

ph: 785-625-4778 fax: 785-625-5620

Printed: 2013.05.24 @ 09:12:05



**TRILOBITE
TESTING, INC.**

DRILL STEM TEST REPORT

Dow ning-Nelson OilCo Inc

13-14s-19w Ellis,KS

PO Box 1019
Hays KS 67601

Sunley-Rohr #1-13

ATTN: Ron Nelson

Job Ticket: 52078

DST#: 1

Test Start: 2013.05.18 @ 22:20:24

GENERAL INFORMATION:

Formation: **LKC H-I-J**

Deviated: No Whipstock: ft (KB)

Time Tool Opened: 00:03:49

Time Test Ended: 03:30:18

Test Type: Conventional Bottom Hole (Initial)

Tester: Ray Schwager

Unit No: 42

Interval: 3551.00 ft (KB) To 3650.00 ft (KB) (TVD)

Reference Elevations: 2151.00 ft (KB)

Total Depth: 3650.00 ft (KB) (TVD)

2143.00 ft (CF)

Hole Diameter: 7.88 inches Hole Condition: Fair

KB to GR/CF: 8.00 ft

Serial #: 8369

Inside

Press @ RunDepth: 38.37 psig @ 3557.00 ft (KB)

Capacity: 8000.00 psig

Start Date: 2013.05.18

End Date:

2013.05.19

Last Calib.:

2013.05.19

Start Time: 22:20:24

End Time:

03:30:18

Time On Btm:

2013.05.19 @ 00:01:04

Time Off Btm:

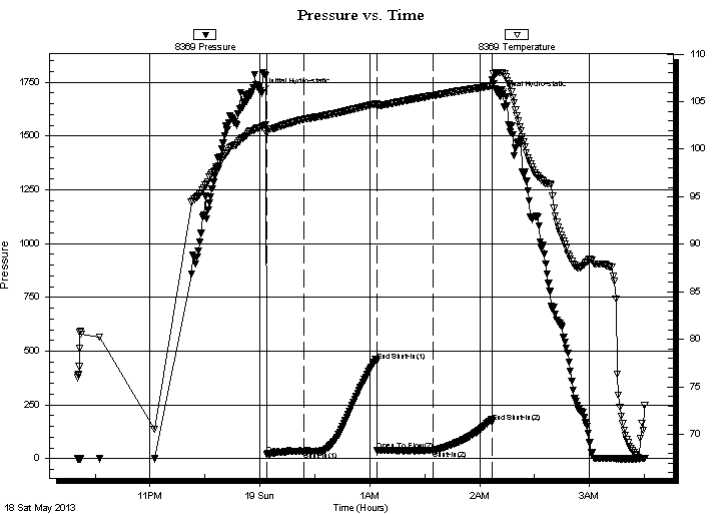
2013.05.19 @ 02:10:49

TEST COMMENT: 30-IFP-w k bl thru-out 1/4" to 1/2" bl

30-ISIP-no bl

30-FFP-surface bl

30-FSIP-no bl



PRESSURE SUMMARY

Time (Min.)	Pressure (psig)	Temp (deg F)	Annotation
0	1700.25	102.32	Initial Hydro-static
3	19.50	101.62	Open To Flow (1)
23	35.54	103.13	Shut-In(1)
63	454.39	104.77	End Shut-In(1)
63	37.81	104.62	Open To Flow (2)
94	38.37	105.64	Shut-In(2)
126	170.81	106.66	End Shut-In(2)
130	1689.68	108.03	Final Hydro-static

Recovery

Length (ft)	Description	Volume (bbl)
45.00	SOCM 2%O98%M	0.36

Gas Rates

Choke (inches)	Pressure (psig)	Gas Rate (Mcf/d)



**TRILOBITE
TESTING, INC.**

DRILL STEM TEST REPORT

TOOL DIAGRAM

Dow ning-Nelson OilCo Inc

13-14s-19w Ellis,KS

PO Box 1019
Hays KS 67601

Sunley-Rohr #1-13

Job Ticket: 52078

DST#: 1

ATTN: Ron Nelson

Test Start: 2013.05.18 @ 22:20:24

Tool Information

Drill Pipe:	Length: 3520.00 ft	Diameter: 3.80 inches	Volume: 49.38 bbl	Tool Weight: 2200.00 lb
Heavy Wt. Pipe:	Length: 0.00 ft	Diameter: 0.00 inches	Volume: 0.00 bbl	Weight set on Packer: 25000.00 lb
Drill Collar:	Length: 30.00 ft	Diameter: 2.25 inches	Volume: 0.15 bbl	Weight to Pull Loose: 65000.00 lb
			<u>Total Volume: 49.53 bbl</u>	Tool Chased 0.00 ft
Drill Pipe Above KB:	20.00 ft			String Weight: Initial 52000.00 lb
Depth to Top Packer:	3551.00 ft			Final 52000.00 lb
Depth to Bottom Packer:	ft			
Interval between Packers:	99.00 ft			
Tool Length:	120.00 ft			
Number of Packers:	2	Diameter: 6.75 inches		

Tool Comments:

Tool Description	Length (ft)	Serial No.	Position	Depth (ft)	Accum. Lengths
------------------	-------------	------------	----------	------------	----------------

Change Over Sub	1.00			3531.00	
Shut In Tool	5.00			3536.00	
Hydraulic tool	5.00			3541.00	
Packer	5.00			3546.00	21.00 Bottom Of Top Packer
Packer	5.00			3551.00	
Stubb	1.00			3552.00	
Perforations	5.00			3557.00	
Recorder	0.00	8369	Inside	3557.00	
Recorder	0.00	8700	Outside	3557.00	
Blank Spacing	65.00			3622.00	
Perforations	25.00			3647.00	
Bullnose	3.00			3650.00	99.00 Bottom Packers & Anchor

Total Tool Length: 120.00



**TRILOBITE
TESTING, INC.**

DRILL STEM TEST REPORT

FLUID SUMMARY

Dow ning-Nelson OilCo Inc

13-14s-19w Ellis,KS

PO Box 1019
Hays KS 67601

Sunley-Rohr #1-13

Job Ticket: 52078

DST#: 1

ATTN: Ron Nelson

Test Start: 2013.05.18 @ 22:20:24

Mud and Cushion Information

Mud Type: Gel Chem

Cushion Type:

Oil API:

deg API

Mud Weight: 9.00 lb/gal

Cushion Length:

ft

Water Salinity:

ppm

Viscosity: 54.00 sec/qt

Cushion Volume:

bbbl

Water Loss: 7.91 in³

Gas Cushion Type:

Resistivity: ohm.m

Gas Cushion Pressure:

psig

Salinity: 3000.00 ppm

Filter Cake: 1.00 inches

Recovery Information

Recovery Table

Length ft	Description	Volume bbbl
45.00	SOCM 2% O98%M	0.358

Total Length: 45.00 ft Total Volume: 0.358 bbl

Num Fluid Samples: 0

Num Gas Bombs: 0

Serial #:

Laboratory Name:

Laboratory Location:

Recovery Comments:

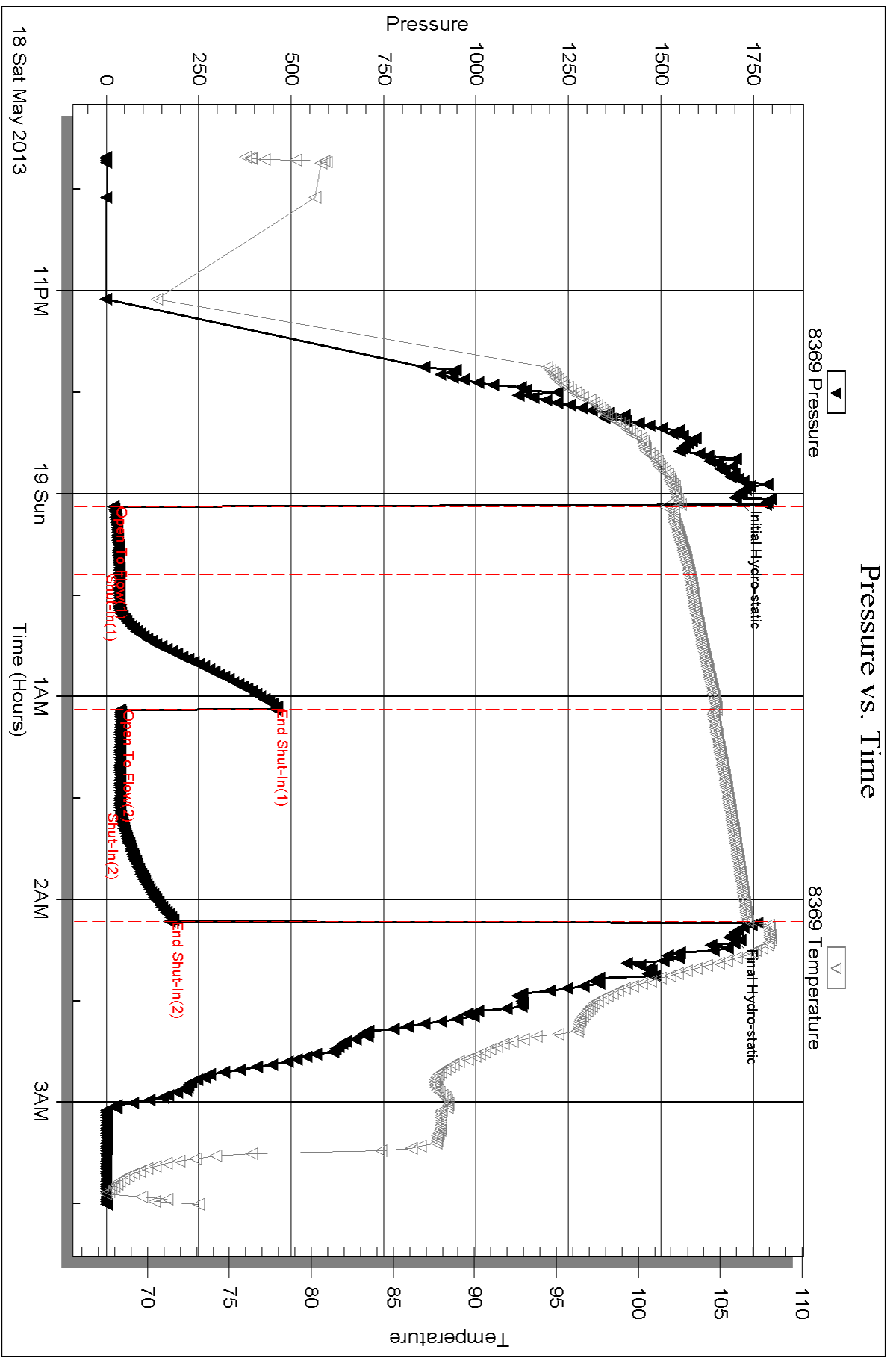
Serial #: 8369

Inside

Downing-Nelson OilCo Inc

Sunley-Rohr #1-13

DST Test Number: 1



Triobite Testing, Inc

Ref. No: 52078

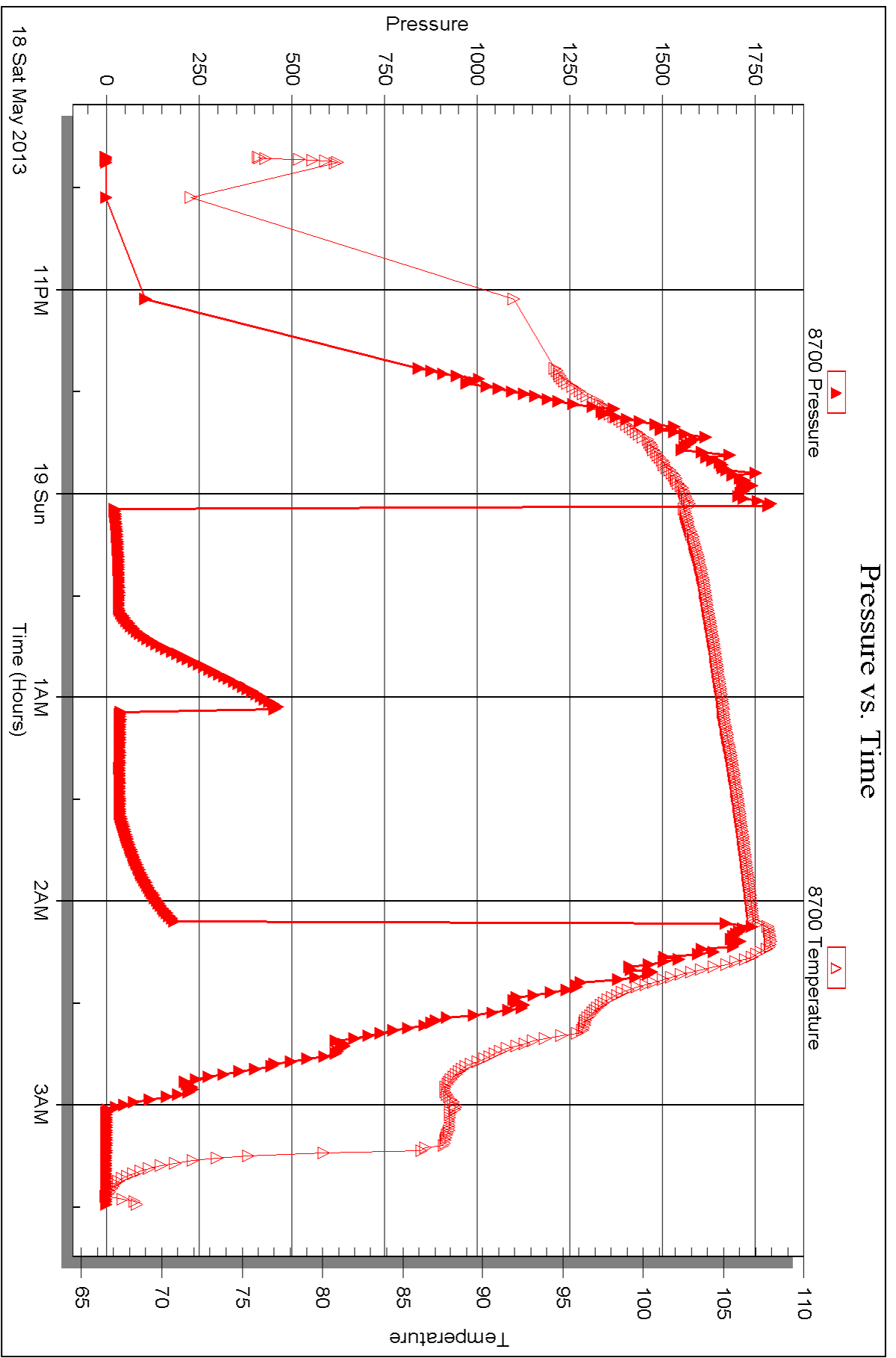
Printed: 2013.05.24 @ 09:12:08

Serial #: 8700

Outside Dow nting-Nelson OilCo Inc

Sunley-Rohr #1-13

DST Test Number: 1





DRILL STEM TEST REPORT

Prepared For: **Downing-Nelson OilCo Inc**

PO Box 1019
Hays KS 67601

ATTN: Ron Nelson

Sunley-Rohr #1-13

13-14s-19w Ellis,KS

Start Date: 2013.05.19 @ 14:25:18

End Date: 2013.05.19 @ 19:19:27

Job Ticket #: 52079 DST #: 2

Trilobite Testing, Inc

PO Box 362 Hays, KS 67601

ph: 785-625-4778 fax: 785-625-5620

Printed: 2013.05.24 @ 09:11:30



TRILOBITE TESTING, INC.

DRILL STEM TEST REPORT

Dow ning-Nelson OilCo Inc

13-14s-19w Ellis,KS

PO Box 1019
Hays KS 67601

Sunley-Rohr #1-13

ATTN: Ron Nelson

Job Ticket: 52079

DST#: 2

Test Start: 2013.05.19 @ 14:25:18

GENERAL INFORMATION:

Formation: **Arbuckle**

Deviated: No Whipstock: ft (KB)

Time Tool Opened: 15:49:58

Time Test Ended: 19:19:27

Test Type: Conventional Bottom Hole (Reset)

Tester: Ray Schwager

Unit No: 42

Interval: 3724.00 ft (KB) To 3770.00 ft (KB) (TVD)

Reference Elevations: 2151.00 ft (KB)

Total Depth: 3770.00 ft (KB) (TVD)

2143.00 ft (CF)

Hole Diameter: 7.88 inches Hole Condition: Fair

KB to GR/CF: 8.00 ft

Serial #: 8369 Inside

Press @ Run Depth: 37.12 psig @ 3735.00 ft (KB)

Capacity: 8000.00 psig

Start Date: 2013.05.19

End Date: 2013.05.19

Last Calib.: 2013.05.19

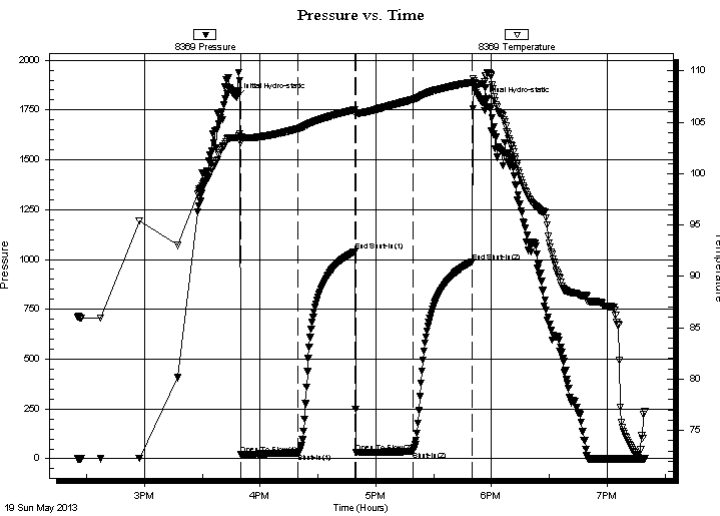
Start Time: 14:25:18

End Time: 19:19:27

Time On Btm: 2013.05.19 @ 15:47:58

Time Off Btm: 2013.05.19 @ 17:55:13

TEST COMMENT: 30-IFP-w k bl thru-out surface to 1/2" bl
30-ISIP-no bl
30-FFP-w k bl thru-out surface to 1/4" bl
30-FSIP-no bl



PRESSURE SUMMARY

Time (Min.)	Pressure (psig)	Temp (deg F)	Annotation
0	1814.11	103.48	Initial Hydro-static
2	20.67	102.99	Open To Flow (1)
32	29.98	104.37	Shut-In(1)
62	1040.75	106.25	End Shut-In(1)
62	32.72	105.96	Open To Flow (2)
92	37.12	107.21	Shut-In(2)
122	988.14	108.90	End Shut-In(2)
128	1789.55	108.77	Final Hydro-static

Recovery

Length (ft)	Description	Volume (bbl)
20.00	HO&GCM 5%G35%O60%M	0.10
25.00	CO	0.26
0.00	60'GIP	0.00

* Recovery from multiple tests

Gas Rates

Choke (inches)	Pressure (psig)	Gas Rate (Mcf/d)



**TRILOBITE
TESTING, INC.**

DRILL STEM TEST REPORT

TOOL DIAGRAM

Dow ning-Nelson OilCo Inc

13-14s-19w Ellis,KS

PO Box 1019
Hays KS 67601

Sunley-Rohr #1-13

Job Ticket: 52079

DST#: 2

ATTN: Ron Nelson

Test Start: 2013.05.19 @ 14:25:18

Tool Information

Drill Pipe:	Length: 3690.00 ft	Diameter: 3.80 inches	Volume: 51.76 bbl	Tool Weight: 2200.00 lb
Heavy Wt. Pipe:	Length: 0.00 ft	Diameter: 0.00 inches	Volume: 0.00 bbl	Weight set on Packer: 25000.00 lb
Drill Collar:	Length: 30.00 ft	Diameter: 2.25 inches	Volume: 0.15 bbl	Weight to Pull Loose: 65000.00 lb
			<u>Total Volume: 51.91 bbl</u>	Tool Chased 0.00 ft
Drill Pipe Above KB:	17.00 ft			String Weight: Initial 54000.00 lb
Depth to Top Packer:	3724.00 ft			Final 54000.00 lb
Depth to Bottom Packer:	ft			
Interval between Packers:	46.00 ft			
Tool Length:	67.00 ft			
Number of Packers:	2	Diameter: 6.75 inches		

Tool Comments:

Tool Description

Tool Description	Length (ft)	Serial No.	Position	Depth (ft)	Accum. Lengths
Change Over Sub	1.00			3704.00	
Shut In Tool	5.00			3709.00	
Hydraulic tool	5.00			3714.00	
Packer	5.00			3719.00	21.00 Bottom Of Top Packer
Packer	5.00			3724.00	
Stubb	1.00			3725.00	
Perforations	10.00			3735.00	
Recorder	0.00	8369	Inside	3735.00	
Recorder	0.00	8700	Outside	3735.00	
Blank Spacing	32.00			3767.00	
Bullnose	3.00			3770.00	46.00 Bottom Packers & Anchor

Total Tool Length: 67.00



**TRILOBITE
TESTING, INC.**

DRILL STEM TEST REPORT

FLUID SUMMARY

Downing-Nelson OilCo Inc

13-14s-19w Ellis,KS

PO Box 1019
Hays KS 67601

Sunley-Rohr #1-13

Job Ticket: 52079

DST#: 2

ATTN: Ron Nelson

Test Start: 2013.05.19 @ 14:25:18

Mud and Cushion Information

Mud Type: Gel Chem

Cushion Type:

Oil API:

31 deg API

Mud Weight: 9.00 lb/gal

Cushion Length:

ft

Water Salinity:

ppm

Viscosity: 52.00 sec/qt

Cushion Volume:

bbbl

Water Loss: 8.73 in³

Gas Cushion Type:

Resistivity: ohm.m

Gas Cushion Pressure:

psig

Salinity: 5000.00 ppm

Filter Cake: 1.00 inches

Recovery Information

Recovery Table

Length ft	Description	Volume bbbl
20.00	HO&GCM 5%G35%O60%M	0.098
25.00	CO	0.260
0.00	60'GIP	0.000

Total Length: 45.00 ft Total Volume: 0.358 bbl

Num Fluid Samples: 0

Num Gas Bombs: 0

Serial #:

Laboratory Name:

Laboratory Location:

Recovery Comments:

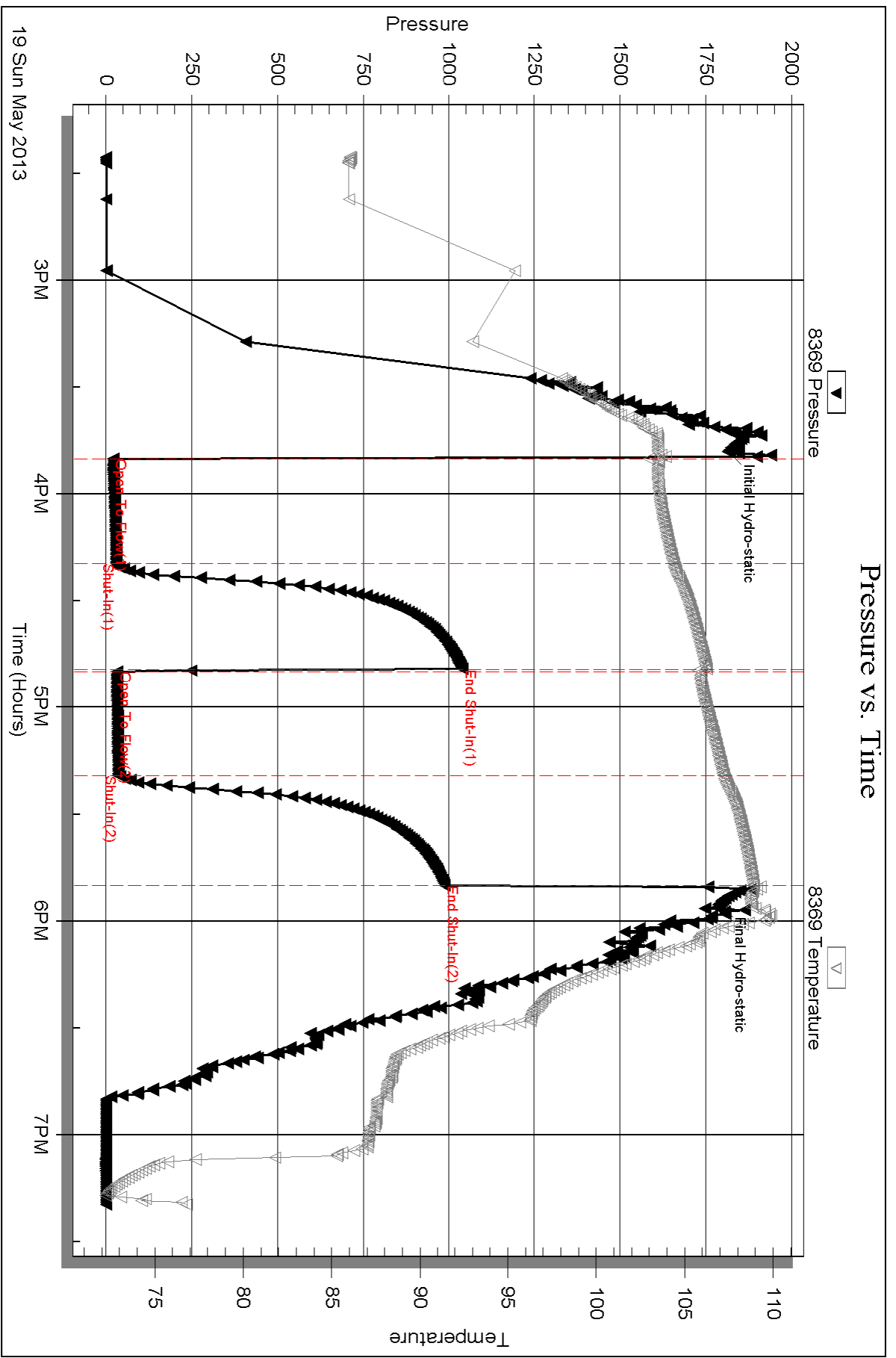
Serial #: 8369

Inside

Downing-Nelson OilCo Inc

Sunley-Rohr #1-13

DST Test Number: 2



Triobite Testing, Inc

Ref. No: 52079

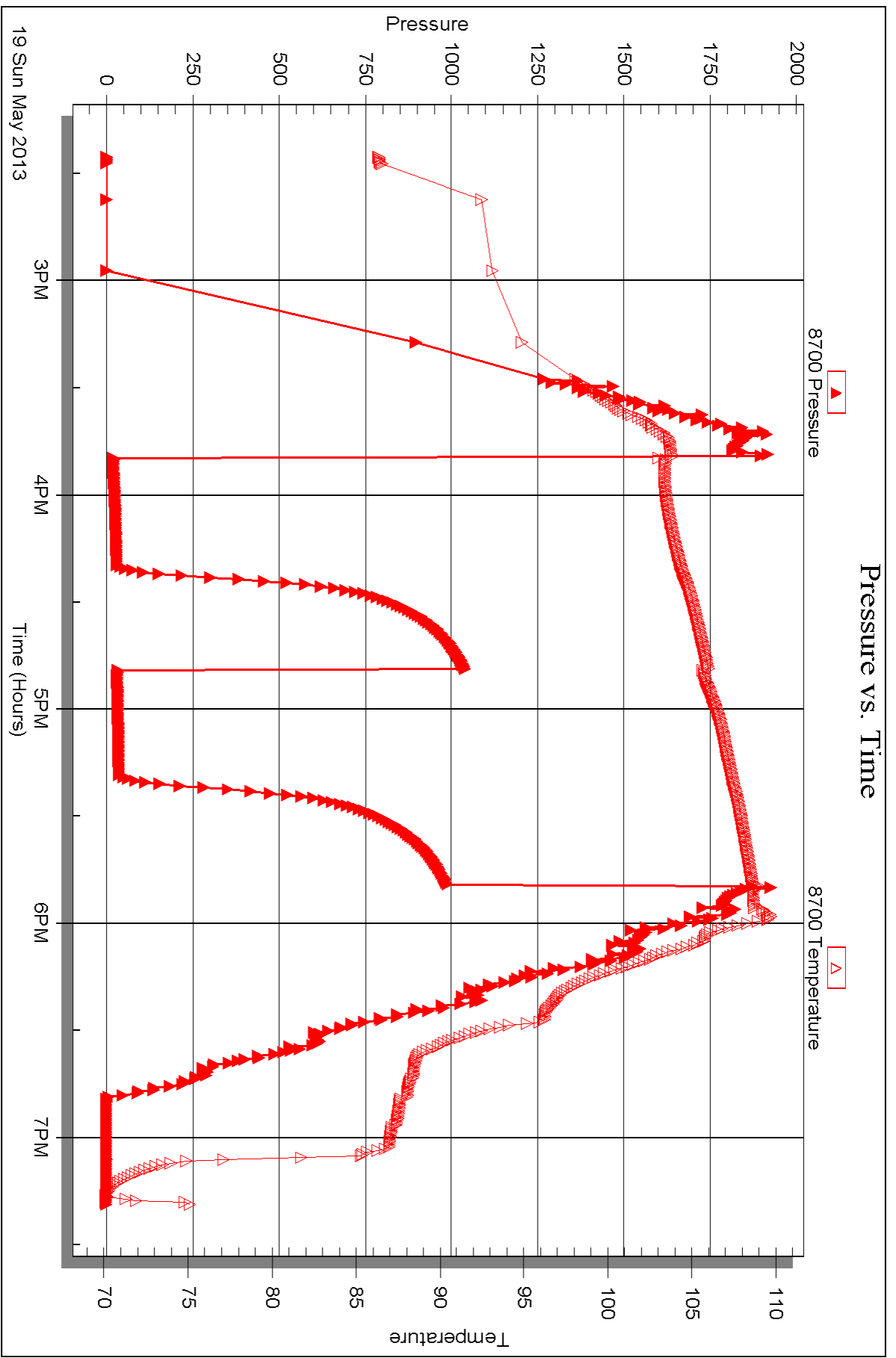
Printed: 2013.05.24 @ 09:11:33

Serial #: 8700

Outside Dow nging-Nelson OilCo Inc

Sunley-Rohr #1-13

DST Test Number: 2





DRILL STEM TEST REPORT

Prepared For: **Downing-Nelson OilCo Inc**

PO Box 1019
Hays KS 67601

ATTN: Ron Nelson

Sunley-Rohr #1-13

13-14s-19w Ellis,KS

Start Date: 2013.05.20 @ 00:35:46

End Date: 2013.05.20 @ 06:40:55

Job Ticket #: 52080 DST #: 3

Trilobite Testing, Inc

PO Box 362 Hays, KS 67601

ph: 785-625-4778 fax: 785-625-5620

Printed: 2013.05.24 @ 09:10:47



TRILOBITE TESTING, INC.

DRILL STEM TEST REPORT

Dow ning-Nelson OilCo Inc

13-14s-19w Ellis,KS

PO Box 1019
Hays KS 67601

Sunley-Rohr #1-13

ATTN: Ron Nelson

Job Ticket: 52080

DST#: 3

Test Start: 2013.05.20 @ 00:35:46

GENERAL INFORMATION:

Formation: **Arbuckle**

Deviated: No Whipstock: ft (KB)

Time Tool Opened: 02:14:41

Time Test Ended: 06:40:55

Test Type: Conventional Bottom Hole (Reset)

Tester: Ray Schwager

Unit No: 42

Interval: 3770.00 ft (KB) To 3783.00 ft (KB) (TVD)

Reference Elevations: 2151.00 ft (KB)

Total Depth: 3783.00 ft (KB) (TVD)

2143.00 ft (CF)

Hole Diameter: 7.88 inches Hole Condition: Fair

KB to GR/CF: 8.00 ft

Serial #: 8369

Inside

Press @ Run Depth: 249.72 psig @ 3775.00 ft (KB)

Capacity: 8000.00 psig

Start Date: 2013.05.20

End Date:

2013.05.20

Last Calib.:

2013.05.20

Start Time: 00:35:46

End Time:

06:40:55

Time On Btm:

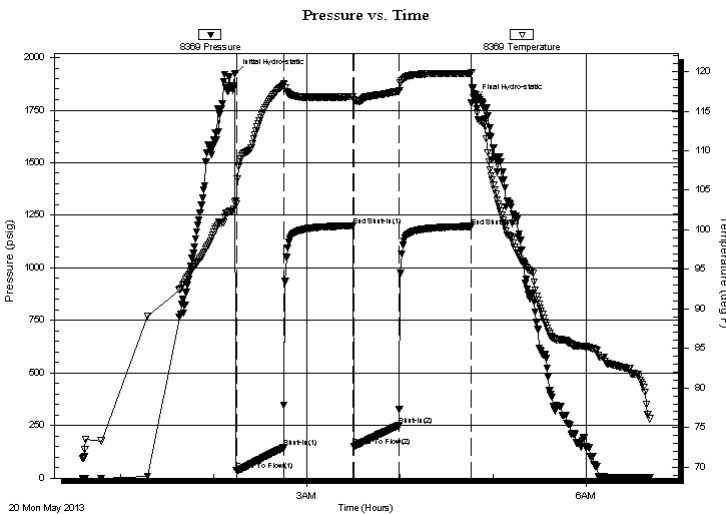
2013.05.20 @ 02:14:11

Time Off Btm:

2013.05.20 @ 04:48:41

TEST COMMENT: 30-IFP-w k to strg in 6 min
45-ISIP-1/4" bl bk
30-FFP-w k to strg in 11 min
45-FSIP-1/4" bl bk

PRESSURE SUMMARY



Time (Min.)	Pressure (psig)	Temp (deg F)	Annotation
0	1923.67	103.69	Initial Hydro-static
1	36.37	103.19	Open To Flow (1)
31	145.31	118.35	Shut-In(1)
76	1200.75	116.81	End Shut-In(1)
77	151.52	116.38	Open To Flow (2)
106	249.72	117.52	Shut-In(2)
152	1195.01	119.76	End Shut-In(2)
155	1806.56	116.25	Final Hydro-static

Recovery

Length (ft)	Description	Volume (bbl)
60.00	MGO 20%G10%M70%O	0.57
620.00	CO	8.70
0.00	180'GIP	0.00

* Recovery from multiple tests

Gas Rates

Choke (inches)	Pressure (psig)	Gas Rate (Mcf/d)



**TRILOBITE
TESTING, INC.**

DRILL STEM TEST REPORT

TOOL DIAGRAM

Dow ning-Nelson OilCo Inc

13-14s-19w Ellis,KS

PO Box 1019
Hays KS 67601

Sunley-Rohr #1-13

Job Ticket: 52080

DST#: 3

ATTN: Ron Nelson

Test Start: 2013.05.20 @ 00:35:46

Tool Information

Drill Pipe:	Length: 3724.00 ft	Diameter: 3.80 inches	Volume: 52.24 bbl	Tool Weight:	2200.00 lb
Heavy Wt. Pipe:	Length: 0.00 ft	Diameter: 0.00 inches	Volume: 0.00 bbl	Weight set on Packer:	25000.00 lb
Drill Collar:	Length: 30.00 ft	Diameter: 2.25 inches	Volume: 0.15 bbl	Weight to Pull Loose:	65000.00 lb
			<u>Total Volume: 52.39 bbl</u>	Tool Chased	0.00 ft
Drill Pipe Above KB:	5.00 ft			String Weight: Initial	52000.00 lb
Depth to Top Packer:	3770.00 ft			Final	54000.00 lb
Depth to Bottom Packer:	ft				
Interval between Packers:	13.00 ft				
Tool Length:	34.00 ft				
Number of Packers:	2	Diameter: 6.75 inches			
Tool Comments:					

Tool Description	Length (ft)	Serial No.	Position	Depth (ft)	Accum. Lengths
------------------	-------------	------------	----------	------------	----------------

Change Over Sub	1.00			3750.00	
Shut In Tool	5.00			3755.00	
Hydraulic tool	5.00			3760.00	
Packer	5.00			3765.00	21.00 Bottom Of Top Packer
Packer	5.00			3770.00	
Stubb	1.00			3771.00	
Perforations	4.00			3775.00	
Recorder	0.00	8369	Inside	3775.00	
Recorder	0.00	8700	Outside	3775.00	
Perforations	5.00			3780.00	
Bullnose	3.00			3783.00	13.00 Bottom Packers & Anchor

Total Tool Length: 34.00



**TRILOBITE
TESTING, INC.**

DRILL STEM TEST REPORT

FLUID SUMMARY

Downing-Nelson OilCo Inc

13-14s-19w Ellis,KS

PO Box 1019
Hays KS 67601

Sunley-Rohr #1-13

Job Ticket: 52080

DST#: 3

ATTN: Ron Nelson

Test Start: 2013.05.20 @ 00:35:46

Mud and Cushion Information

Mud Type: Gel Chem

Cushion Type:

Oil API:

31 deg API

Mud Weight: 9.00 lb/gal

Cushion Length:

ft

Water Salinity:

ppm

Viscosity: 52.00 sec/qt

Cushion Volume:

bbbl

Water Loss: 8.75 in³

Gas Cushion Type:

Resistivity: ohm.m

Gas Cushion Pressure:

psig

Salinity: 5000.00 ppm

Filter Cake: 1.00 inches

Recovery Information

Recovery Table

Length ft	Description	Volume bbl
60.00	MGO 20%G10%M70%O	0.568
620.00	CO	8.697
0.00	180'GIP	0.000

Total Length: 680.00 ft Total Volume: 9.265 bbl

Num Fluid Samples: 0

Num Gas Bombs: 0

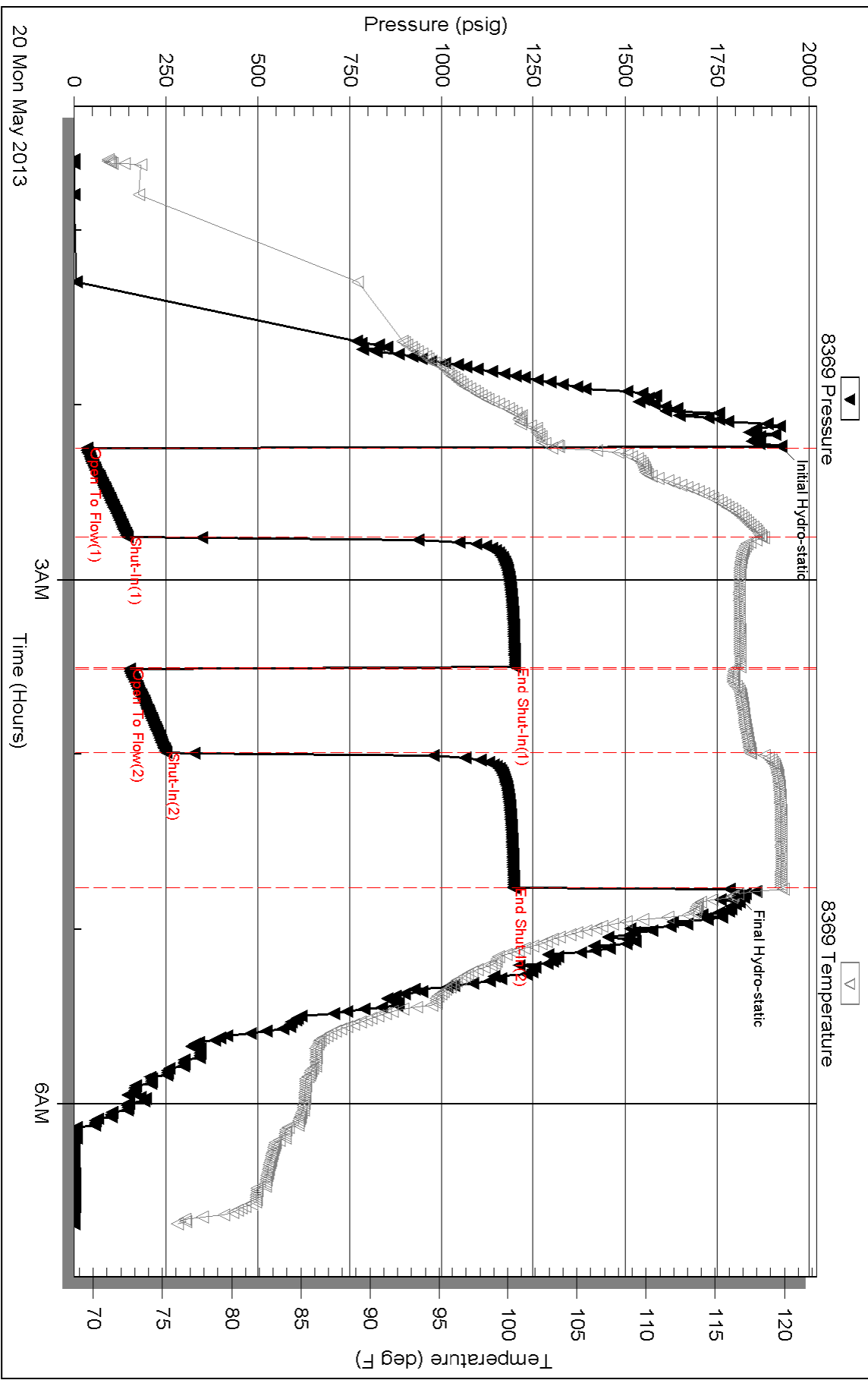
Serial #:

Laboratory Name:

Laboratory Location:

Recovery Comments:

Pressure vs. Time



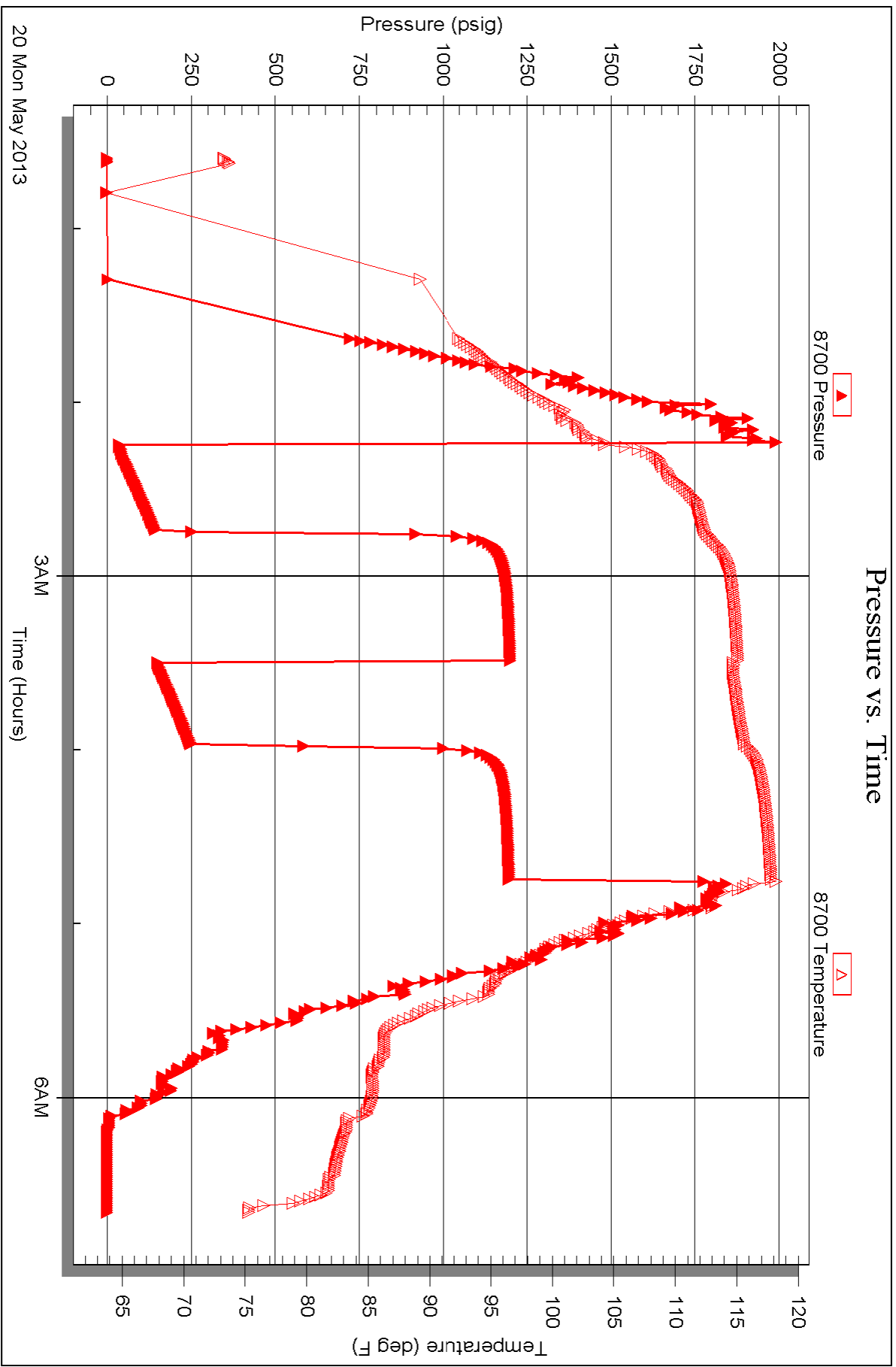
Serial #: 8700

Outside

Dow nung-Nelson OilCo Inc

Sunley-Rohr #1-13

DST Test Number: 3





TRILOBITE TESTING INC.

1515 Commerce Parkway • Hays, Kansas 67601

Test Ticket

NO. 52078

Well Name & No. Sunley-Rohr Unit #1-13 Test No. 1 Date 5-18-13
 Company Downing-Nelson Oil Co Inc Elevation 2151 KB 2143 GL
 Address P.O. Box 1019 Hays, Ks 67601
 Co. Rep / Geo. AL Downing Rig DISCOVERY rig #4
 Location: Sec. 13 Twp. 14^s Rge. 19^w Co. ELLIS State Ks

Interval Tested 3551-3650 Zone Tested LKC H-I-J
 Anchor Length 99 Drill Pipe Run 3520 Mud Wt. 8.8
 Top Packer Depth 3549 Drill Collars Run 30 Vis 54
 Bottom Packer Depth 3551 Wt. Pipe Run - WL 8
 Total Depth 3650 Chlorides 3000 ppm System LCM 2#
 Blow Description IFP - WEAK BLOW THRU-OUT 1/4" TO 1/2" BLOW
ISIP - NO BLOW
FFP - WEAK SURFACE BLOW
FSTIP - NO BLOW

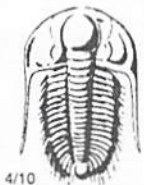
Rec	Feet of	%gas	%oil	%water	%mud
<u>45</u>	<u>50 CM</u>		<u>2</u>		<u>98</u>
Rec	Feet of	%gas	%oil	%water	%mud
Rec	Feet of	%gas	%oil	%water	%mud
Rec	Feet of	%gas	%oil	%water	%mud
Rec	Feet of	%gas	%oil	%water	%mud

Rec Total 45 BHT 106 Gravity - API RW - @ - °F Chlorides - ppm
 (A) Initial Hydrostatic 1700 Test 1150 T-On Location 2020
 (B) First Initial Flow 19 Jars _____ T-Started 2220
 (C) First Final Flow 35 Safety Joint _____ T-Open 0005
 (D) Initial Shut-In 454 Circ Sub _____ T-Pulled 0205
 (E) Second Initial Flow 37 Hourly Standby _____ T-Out 0330
 (F) Second Final Flow 38 Mileage 12 RT 26.35 Comments _____
 (G) Final Shut-In 170 Sampler _____
 (H) Final Hydrostatic 1689 Straddle _____

Initial Open 30 Shale Packer _____
 Initial Shut-In 30 Shale Packer _____
 Final Flow 30 Extra Packer _____
 Final Shut-In 30 Extra Recorder _____
 Sub Total 0 Total 1176.35 MP/DST Disc't _____
 Sub Total 1176.35

Approved By _____ Our Representative Ray Schwager Thank you

Trilobite Testing Inc. shall not be liable for damaged of any kind of the property or personnel of the one for whom a test is made, or for any loss suffered or sustained, directly or indirectly, through the use of its equipment, or its statements or opinion concerning the results of any test, tools lost or damaged in the hole shall be paid for at cost by the party for whom the test is made.



TRILOBITE TESTING INC.

1515 Commerce Parkway • Hays, Kansas 67601

Test Ticket

NO. 52079

Well Name & No. Sunley - Rohr Unit #1-13 Test No. 2 Date 5-19-13
 Company Downing - Nelson Oil Co Inc Elevation 2151 KB 2143 GL
 Address PO Box 1019 Hays, KS 67601
 Co. Rep / Geo. Ron Nelson Rig Discovery rig 4
 Location: Sec. 13 Twp. 14^s Rge. 19^w Co. ELLIS State Ks

Interval Tested 3724-3770 Zone Tested Arbuckle
 Anchor Length 46 Drill Pipe Run 3690 Mud Wt. 9.3
 Top Packer Depth 3719 Drill Collars Run 30 Vis 52
 Bottom Packer Depth 3724 Wt. Pipe Run - WL 8.8
 Total Depth 3770 Chlorides 5000 ppm System LCM 1#

Blow Description IFP - Weak Blow thru-out, surface to 1/2" Blow
ISIP - NO Blow
FFP - Weak Blow thru-out, surface to 1/4" Blow
FSIP - NO Blow

Rec	Feet of	%gas	%oil	%water	%mud
<u>60</u>	<u>GIP</u>				
<u>25</u>	<u>CO</u>				
<u>20</u>	<u>H0+GCM</u>	<u>5</u>	<u>35</u>		<u>60</u>

Rec Total 45 BHT 109 Gravity 31 API RW - @ - °F Chlorides - ppm

(A) Initial Hydrostatic 1814 Test 1150 T-On Location 1345
 (B) First Initial Flow 20 Jars _____ T-Started 1425
 (C) First Final Flow 29 Safety Joint _____ T-Open 1550
 (D) Initial Shut-In 1040 Circ Sub _____ T-Pulled 1750
 (E) Second Initial Flow 32 Hourly Standby _____ T-Out 1919
 (F) Second Final Flow 37 Mileage 17 RT 26.35 Comments _____
 (G) Final Shut-In 988 Sampler _____
 (H) Final Hydrostatic 1789 Straddle _____
 Shale Packer _____
 Extra Packer _____
 Extra Recorder _____

Initial Open 30
 Initial Shut-In 30
 Final Flow 30
 Final Shut-In 30
 Sub Total 1176.35
 MP/DST Disc't _____

Approved By _____ Our Representative RAY SCHWAGM Thank you

Trilobite Testing Inc. shall not be liable for damaged of any kind of the property or personnel of the one for whom a test is made, or for any loss suffered or sustained, directly or indirectly, through the use of its equipment, or its statements or opinion concerning the results of any test, tools lost or damaged in the hole shall be paid for at cost by the party for whom the test is made.



TRILOBITE TESTING INC.

1515 Commerce Parkway • Hays, Kansas 67601

Test Ticket

NO. 52080

Well Name & No. Sunley-Rohr Unit #1-13 Test No. 3 Date 5-20-13
 Company Downing-Nelson Oil Co Inc Elevation 2151 KB 2143 GL
 Address Po Box 1019 Hays, Ks 67601
 Co. Rep / Geo. Ron Nelson Rig Discovery rig 4
 Location: Sec. 13 Twp. 14^s Rge. 19^w Co. ELLIS State Ks

Interval Tested 3770-3783 Zone Tested Arbuckle
 Anchor Length 13 Drill Pipe Run _____ Mud Wt. 9.3
 Top Packer Depth 3765 Drill Collars Run 30 Vis 52
 Bottom Packer Depth 3770 Wt. Pipe Run _____ WL 8.8
 Total Depth 3783 Chlorides 5000 ppm System LCM 1#

Blow Description I FP - Weak to Strong in 6 min
ISIP - 1/4" Blow Back
F FP - Weak to Strong in 11 min
FSTP - 1/4" Blow Back

Rec	Feet of	%gas	%oil	%water	%mud
<u>180</u>	<u>6TP</u>				
<u>620</u>	<u>CO</u>				
<u>60</u>	<u>MGO</u>	<u>20</u>	<u>70</u>	<u>10</u>	
_____	_____	%gas	%oil	%water	%mud
_____	_____	%gas	%oil	%water	%mud

Rec Total 680 BHT 119 Gravity 31.1 API RW - @ - °F Chlorides - ppm

(A) Initial Hydrostatic 1923 Test 1150 T-On Location 0020
 (B) First Initial Flow 36 Jars _____ T-Started 0035
 (C) First Final Flow 145 Safety Joint _____ T-Open 0215
 (D) Initial Shut-In 1200 Circ Sub _____ T-Pulled 0445
 (E) Second Initial Flow 151 Hourly Standby _____ T-Out 0
 (F) Second Final Flow 249 Mileage 26.35 Comments _____
 (G) Final Shut-In 1195 Sampler _____
 (H) Final Hydrostatic 1806 Straddle _____

Initial Open 30 Ruined Shale Packer _____
 Initial Shut-In 45 Ruined Packer _____
 Final Flow 30 Extra Packer _____
 Final Shut-In 45 Extra Recorder _____ Sub Total 0
 Day Standby _____ Total 1176.35
 Accessibility _____ MP/DST Disc't _____
 Sub Total 1176.35

Approved By _____ Our Representative RAY Schwager *Thank you*

Trilobite Testing Inc. shall not be liable for damaged of any kind of the property or personnel of the one for whom a test is made, or for any loss suffered or sustained, directly or indirectly, through the use of its equipment, or its statements or opinion concerning the results of any test, tools lost or damaged in the hole shall be paid for at cost by the party for whom the test is made.