



**TRILOBITE TESTING, INC.**

# DRILL STEM TEST REPORT

Russell Oil Inc

**32 15s 34w Scott Co**

P.O. Box 8050

**EdwardsTrust B 1-32**

Edmond OK

Job Ticket: 49109

**DST#: 6**

73083

Test Start: 2013.03.08 @ 18:14:47

ATTN: Kitt Noah

## GENERAL INFORMATION:

Formation: **Johnson**

Deviated: No Whipstock: ft (KB)

Time Tool Opened: 20:44:02

Time Test Ended: 02:40:02

Test Type: Conventional Bottom Hole (Reset)

Tester: Tate Lang

Unit No: 65

**Interval: 4531.00 ft (KB) To 4555.00 ft (KB) (TVD)**

Reference Elevations: 3039.00 ft (KB)

Total Depth: 4555.00 ft (KB) (TVD)

3034.00 ft (CF)

Hole Diameter: 7.88 inches Hole Condition: Fair

KB to GR/CF: 5.00 ft

**Serial #: 8646 Inside**

Press @ Run Depth: 32.25 psig @ 4532.00 ft (KB)

Capacity: 8000.00 psig

Start Date: 2013.03.08

End Date:

2013.03.09

Last Calib.:

2013.03.09

Start Time: 18:15:02

End Time:

02:40:02

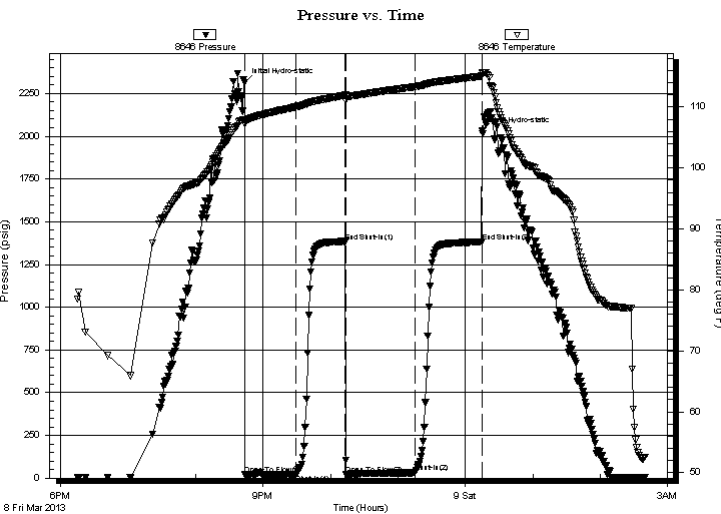
Time On Btm:

2013.03.08 @ 20:43:32

Time Off Btm:

2013.03.09 @ 00:15:02

**TEST COMMENT:** IF-Weak surface blow built to 1 1/2 in.  
 ISI-Dead no return  
 FF-Fair surface blow built to 6 1/2 in.  
 FSI-Dead no return blow



## PRESSURE SUMMARY

Time (Min.)	Pressure (psig)	Temp (deg F)	Annotation
0	2314.14	107.74	Initial Hydro-static
1	19.78	107.29	Open To Flow (1)
46	22.14	110.03	Shut-In(1)
90	1385.19	111.94	End Shut-In(1)
91	21.90	111.63	Open To Flow (2)
152	32.25	113.34	Shut-In(2)
211	1381.36	115.05	End Shut-In(2)
212	2029.57	115.57	Final Hydro-static

## Recovery

Length (ft)	Description	Volume (bbl)
3.00	100%O	0.01
5.00	20%O 80%M	0.02
0.00	186 GIP	0.00

## Gas Rates

	Choke (inches)	Pressure (psig)	Gas Rate (Mcf/d)

\* Recovery from multiple tests



**TRILOBITE  
TESTING, INC.**

# DRILL STEM TEST REPORT

**FLUID SUMMARY**

Russell Oil Inc

**32 15s 34w Scott Co**

P.O. Box 8050  
Edmond OK  
73083

**EdwardsTrust B 1-32**

Job Ticket: 49109

**DST#: 6**

ATTN: Kitt Noah

Test Start: 2013.03.08 @ 18:14:47

## Mud and Cushion Information

Mud Type: Gel Chem

Cushion Type:

Oil API:

30 deg API

Mud Weight: 9.00 lb/gal

Cushion Length:

ft

Water Salinity:

ppm

Viscosity: 56.00 sec/qt

Cushion Volume:

bbbl

Water Loss: 7.98 in<sup>3</sup>

Gas Cushion Type:

Resistivity: 0.00 ohm.m

Gas Cushion Pressure:

psig

Salinity: 7000.00 ppm

Filter Cake: 1.00 inches

## Recovery Information

Recovery Table

Length ft	Description	Volume bbbl
3.00	100%O	0.015
5.00	20%O 80%M	0.025
0.00	186 GIP	0.000

Total Length: 8.00 ft      Total Volume: 0.040 bbl

Num Fluid Samples: 0

Num Gas Bombs: 0

Serial #:

Laboratory Name:

Laboratory Location:

Recovery Comments: API 29 @ 50F = 30

