



**TRILOBITE  
TESTING, INC.**

# DRILL STEM TEST REPORT

Sam Gary Jr. & Associates Inc.

**26-14-17, Ellis, KS**

1515 Wynkoop STE 700  
Denver CO 80202

**Harlan #1-26**

Job Ticket: 52036

**DST#: 2**

ATTN: Chris M

Test Start: 2013.03.10 @ 13:55:05

## GENERAL INFORMATION:

Formation: **KC"H-J"**

Deviated: No Whipstock: ft (KB)

Time Tool Opened: 16:18:00

Time Test Ended: 22:09:59

Test Type: Conventional Bottom Hole (Reset)

Tester: Brett Dickinson

Unit No: 59

**Interval: 3357.00 ft (KB) To 3444.00 ft (KB) (TVD)**

Reference Elevations: 1969.00 ft (KB)

Total Depth: 3444.00 ft (KB) (TVD)

1961.00 ft (CF)

Hole Diameter: 7.88 inches Hole Condition: Fair

KB to GR/CF: 8.00 ft

**Serial #: 8319**

**Inside**

Press @ Run Depth: 124.91 psig @ 3362.00 ft (KB)

Capacity: 8000.00 psig

Start Date: 2013.03.10

End Date:

2013.03.10

Last Calib.:

2013.03.10

Start Time: 13:55:05

End Time:

22:09:59

Time On Btm:

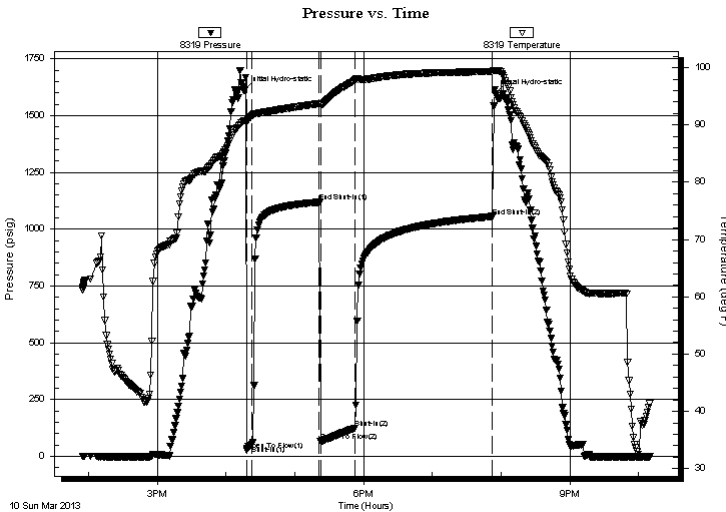
2013.03.10 @ 16:16:00

Time Off Btm:

2013.03.10 @ 19:55:00

**TEST COMMENT:** 5min IF-7in blow  
60min ISI-w eak surface blow  
30min FF-BOB in 5min  
120min FSI-1/2in blow

## PRESSURE SUMMARY



Time (Min.)	Pressure (psig)	Temp (deg F)	Annotation
0	1610.59	90.77	Initial Hydro-static
2	28.48	90.41	Open To Flow (1)
7	51.17	91.59	Shut-In(1)
65	1118.97	93.71	End Shut-In(1)
67	66.43	93.51	Open To Flow (2)
97	124.91	97.88	Shut-In(2)
217	1056.08	99.34	End Shut-In(2)
219	1595.37	99.48	Final Hydro-static

## Recovery

Length (ft)	Description	Volume (bbl)
120.00	V SOMCW 2%O 78%W 20%M	1.41
110.00	SGWOCM 5%G 20%O 5%W 70%M	1.54
0.00	120ft GIP	0.00

\* Recovery from multiple tests

## Gas Rates

Choke (inches)	Pressure (psig)	Gas Rate (Mcf/d)





**TRILOBITE  
TESTING, INC.**

# DRILL STEM TEST REPORT

**FLUID SUMMARY**

Sam Gary Jr. & Associates Inc.

**26-14-17, Ellis, KS**

1515 Wynkoop STE 700  
Denver CO 80202

**Harlan #1-26**

Job Ticket: 52036

**DST#: 2**

ATTN: Chris M

Test Start: 2013.03.10 @ 13:55:05

## Mud and Cushion Information

Mud Type: Gel Chem

Cushion Type:

Oil API:

deg API

Mud Weight: 9.00 lb/gal

Cushion Length:

ft

Water Salinity: 100000 ppm

Viscosity: 55.00 sec/qt

Cushion Volume:

bbbl

Water Loss: 7.98 in<sup>3</sup>

Gas Cushion Type:

Resistivity: ohm.m

Gas Cushion Pressure:

psig

Salinity: 5000.00 ppm

Filter Cake: inches

## Recovery Information

Recovery Table

Length ft	Description	Volume bbbl
120.00	VSOMCW 2%O 78%W 20%M	1.410
110.00	SGWOCM 5%G 20%O 5%W 70%M	1.543
0.00	120ft GIP	0.000

Total Length: 230.00 ft      Total Volume: 2.953 bbl

Num Fluid Samples: 0

Num Gas Bombs: 0

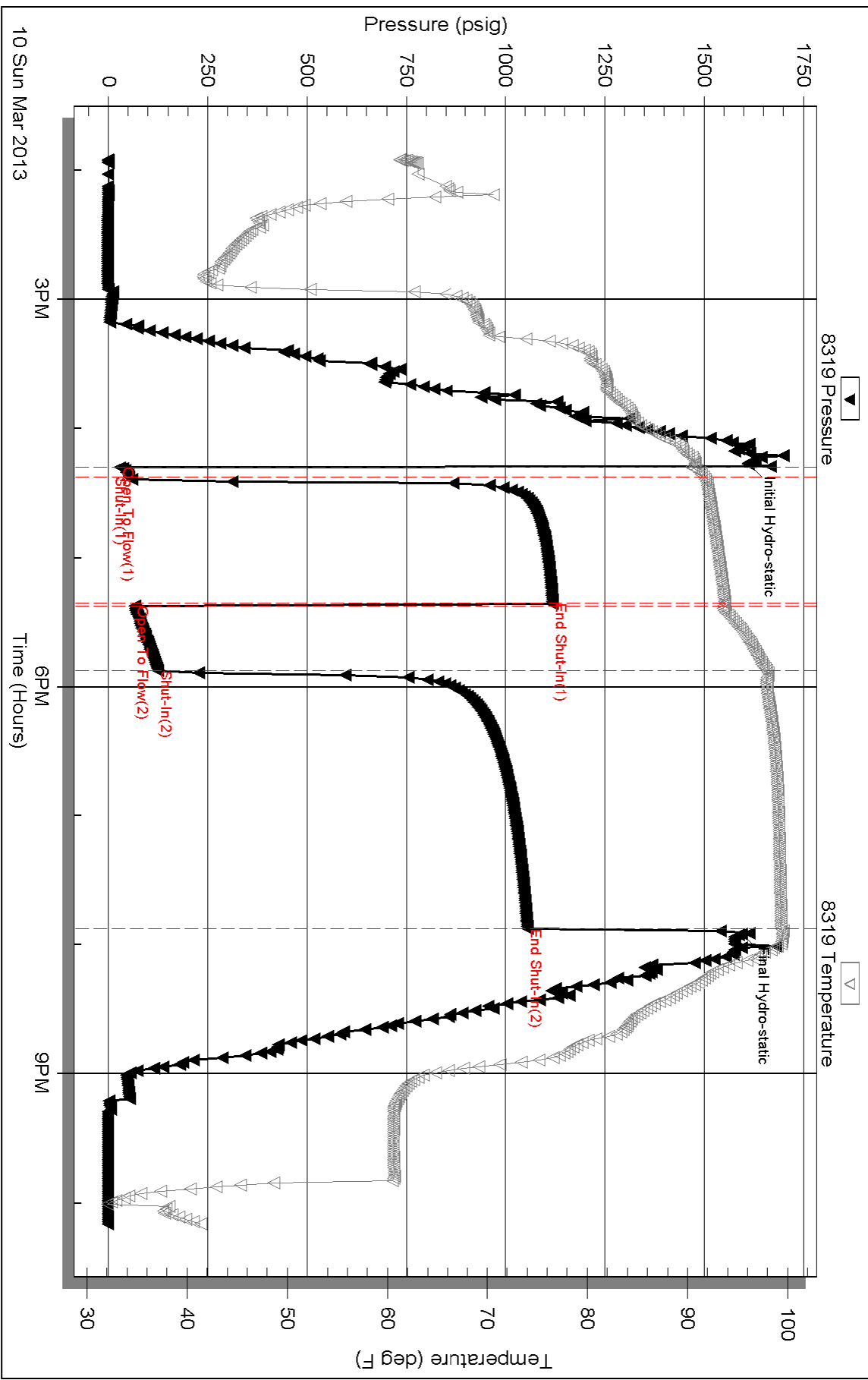
Serial #:

Laboratory Name:

Laboratory Location:

Recovery Comments: RW .16 @ 35 10000 Sampler Data 475psi 500ml O 1500ml W

### Pressure vs. Time



Serial #: 6753

Fluid

Sam Gary Jr. & Associates Inc.

Harlan #1-26

DST Test Number: 2

