

**TRILOBITE TESTING, INC.**

# DRILL STEM TEST REPORT

Reh Oil & Gas LLC

**30-33S-21W Clark**

1501 E First St  
Pratt, KS 67124

**Conrad 30-1**

Job Ticket: 49635

**DST#: 1**

ATTN: Scott Alberg

Test Start: 2012.11.25 @ 16:02:01

## GENERAL INFORMATION:

Formation: **Morrow**

Deviated: **No Whipstock:** ft (KB)

Time Tool Opened: 19:15:01

Time Test Ended: 01:07:16

Test Type: **Conventional Bottom Hole (Initial)**

Tester: **Leal Cason**

Unit No: **45**

Interval: **5324.00 ft (KB) To 5421.00 ft (KB) (TVD)**

Reference Elevations: **1922.00 ft (KB)**

Total Depth: **5421.00 ft (KB) (TVD)**

**1913.00 ft (CF)**

Hole Diameter: **7.97 inches** Hole Condition: **Good**

KB to GR/CF: **9.00 ft**

## Serial #: 6798

Inside

Press@RunDepth: **96.19 psig @ 5325.00 ft (KB)**

Capacity: **8000.00 psig**

Start Date: **2012.11.25**

End Date:

**2012.11.26**

Last Calib.: **2012.11.26**

Start Time: **16:02:01**

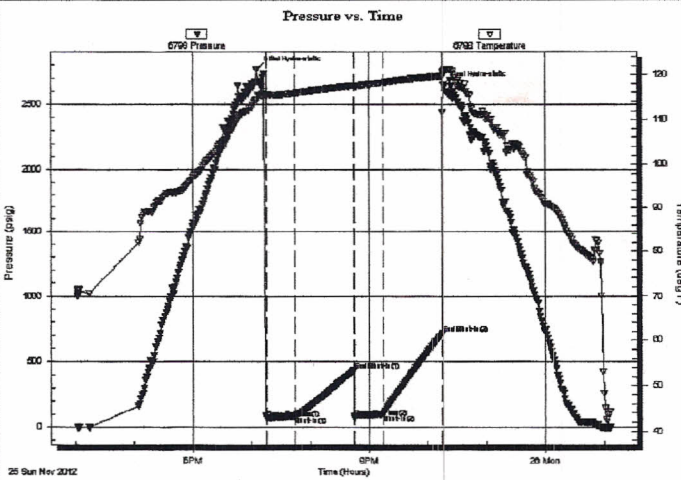
End Time:

**01:07:16**

Time On Btm: **2012.11.25 @ 19:05:16**

Time Off Btm: **2012.11.25 @ 22:16:01**

TEST COMMENT: IF: Fair Blow, BOB in 12 minutes  
IS: 1/2 Inch Blow Back  
FF: Strong Blow, BOB in 30 seconds  
FS: No Blow Back



## PRESSURE SUMMARY

Time (Min.)	Pressure (psig)	Temp (deg F)	Annotation
0	2766.37	114.34	Initial Hydro-static
10	65.05	115.64	Open To Flow (1)
39	83.37	115.90	Shut-In(1)
100	433.19	117.59	End Shut-In(1)
100	74.74	117.45	Open To Flow (2)
129	96.19	118.19	Shut-In(2)
190	712.48	119.77	End Shut-In(2)
191	2651.33	120.50	Final Hydro-static

## Recovery

Length (ft)	Description	Volume (bbl)
0.00	GIP 426 Feet	0.00
70.00	SGCM 2%G 98%M	0.34

## Gas Rates

	Choke (inches)	Pressure (psig)	Gas Rate (Mcf/d)

