



**TRILOBITE
TESTING, INC.**

DRILL STEM TEST REPORT

Berexco LLC

23-26-22 Ford co

2020 Bramblewood
Wichita KS 67206

Tasset # 1-23 X

Job Ticket: 47506

DST#: 2

ATTN: Evan Mayhew / Ed Grie

Test Start: 2013.06.21 @ 04:06:07

GENERAL INFORMATION:

Formation: **Cherokee-- Mississip**

Deviated: No Whipstock: ft (KB)

Time Tool Opened: 07:28:07

Time Test Ended: 14:56:37

Test Type: Conventional Bottom Hole (Reset)

Tester: Chris Staats

Unit No: 47

Interval: 4784.00 ft (KB) To 4910.00 ft (KB) (TVD)

Reference Elevations: 2399.00 ft (KB)

Total Depth: 4910.00 ft (KB) (TVD)

2386.00 ft (CF)

Hole Diameter: 7.88 inches Hole Condition: Fair

KB to GR/CF: 13.00 ft

Serial #: 8676 Outside

Press @ Run Depth: 71.03 psig @ 4785.00 ft (KB)

Capacity: 8000.00 psig

Start Date: 2013.06.21

End Date: 2013.06.21

Last Calib.: 2013.06.21

Start Time: 04:06:12

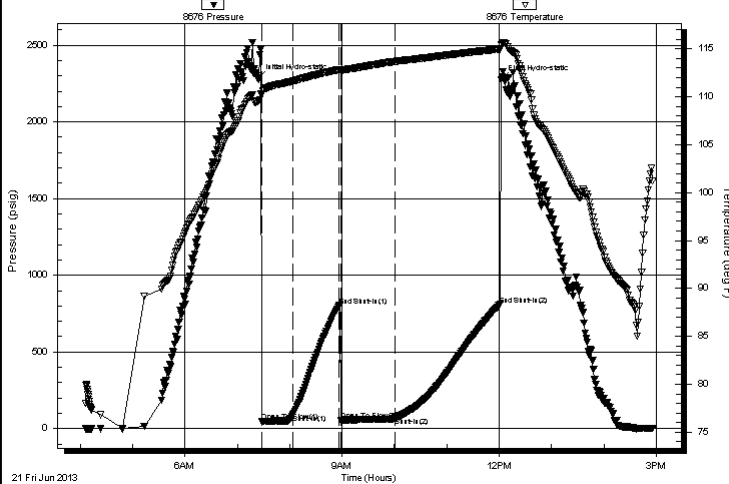
End Time: 14:56:37

Time On Btm: 2013.06.21 @ 07:23:52

Time Off Btm: 2013.06.21 @ 12:02:07

TEST COMMENT: IF: Weak blow 1"
IS: No blow back
FF: No blow
FS: No blow back

Pressure vs. Time



PRESSURE SUMMARY

Time (Min.)	Pressure (psig)	Temp (deg F)	Annotation
0	2282.02	109.56	Initial Hydro-static
5	45.60	110.24	Open To Flow (1)
40	90.90	111.62	Shut-In(1)
93	801.03	112.83	End Shut-In(1)
95	55.56	112.72	Open To Flow (2)
157	71.03	113.69	Shut-In(2)
277	805.42	114.98	End Shut-In(2)
279	2274.85	115.45	Final Hydro-static

Recovery

Length (ft)	Description	Volume (bbl)
30.00	Mud	0.15

Gas Rates

Choke (inches)	Pressure (psig)	Gas Rate (Mcf/d)

* Recovery from multiple tests



**TRILOBITE
TESTING, INC.**

DRILL STEM TEST REPORT

FLUID SUMMARY

Berexco LLC

23-26-22 Ford co

2020 Bramblewood
Wichita KS 67206

Tasset # 1-23 X

Job Ticket: 47506

DST#: 2

ATTN: Evan Mayhew / Ed Grie

Test Start: 2013.06.21 @ 04:06:07

Mud and Cushion Information

Mud Type: Gel Chem

Cushion Type:

Oil API:

deg API

Mud Weight: 9.00 lb/gal

Cushion Length:

ft

Water Salinity:

ppm

Viscosity: 53.00 sec/qt

Cushion Volume:

bbbl

Water Loss: 13.57 in³

Gas Cushion Type:

Resistivity: 0.00 ohm.m

Gas Cushion Pressure:

psig

Salinity: 7600.00 ppm

Filter Cake: 0.00 inches

Recovery Information

Recovery Table

Length ft	Description	Volume bbbl
30.00	Mud	0.148

Total Length: 30.00 ft Total Volume: 0.148 bbl

Num Fluid Samples: 0

Num Gas Bombs: 0

Serial #:

Laboratory Name:

Laboratory Location:

Recovery Comments:

