



**TRILOBITE TESTING, INC.**

# DRILL STEM TEST REPORT

Samuel Gary Jr. and Associates, Inc.

**22 12s 17w Ellis**

1515 Wynkoop St. Ste 700  
Denver, CO 80202

**Virginia 1-22**

Job Ticket: 52071

**DST#: 1**

ATTN: Clayton Camozzi

Test Start: 2013.03.31 @ 20:20:00

## GENERAL INFORMATION:

Formation: **LKC " C & D "**

Deviated: No Whipstock: 2121.00 ft (KB)

Time Tool Opened: 22:37:00

Time Test Ended: 05:32:00

Test Type: Conventional Bottom Hole (Initial)

Tester: Jim Svaty

Unit No: 41

**Interval: 3379.00 ft (KB) To 3430.00 ft (KB) (TVD)**

Reference Elevations: 2121.00 ft (KB)

Total Depth: 3430.00 ft (KB) (TVD)

2113.00 ft (CF)

Hole Diameter: 7.88 inches Hole Condition: Fair

KB to GR/CF: 8.00 ft

**Serial #: 6752 Inside**

Press @ Run Depth: 82.30 psig @ 3394.00 ft (KB)

Capacity: 8000.00 psig

Start Date: 2013.03.31

End Date:

2013.04.01

Last Calib.:

2013.04.01

Start Time: 20:20:01

End Time:

05:31:30

Time On Btm:

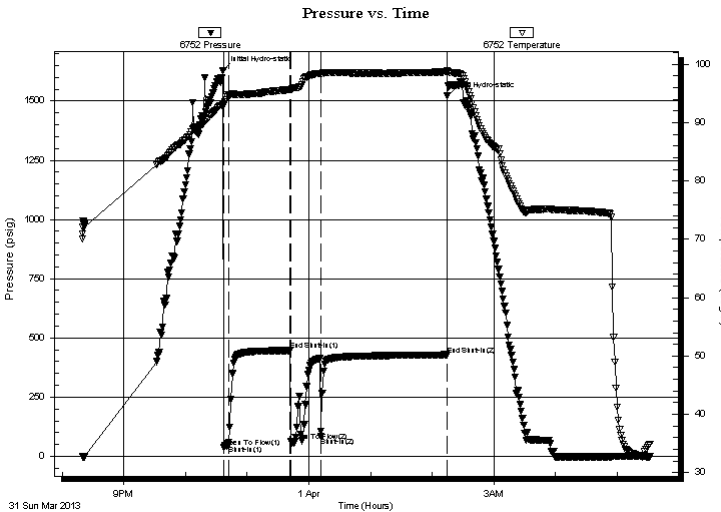
2013.03.31 @ 22:36:40

Time Off Btm:

2013.04.01 @ 02:14:20

**TEST COMMENT:** 5-IFP- Surface Blow Building to 7 in.  
60-ISIP- Surface Blow Died in 20min.  
30-FFP- BOB in 3 1/2 min.  
120-FSIP- Surface Blow

## PRESSURE SUMMARY



Time (Min.)	Pressure (psig)	Temp (deg F)	Annotation
0	1629.47	93.14	Initial Hydro-static
1	38.54	92.93	Open To Flow (1)
5	48.48	94.75	Shut-In(1)
65	447.04	95.69	End Shut-In(1)
66	63.91	95.65	Open To Flow (2)
95	82.30	98.41	Shut-In(2)
218	428.42	98.73	End Shut-In(2)
218	1520.31	98.97	Final Hydro-static

## Recovery

Length (ft)	Description	Volume (bbl)
126.00	GOCM 10%g 5 %o 85% m	1.49
10.00	CO 100%	0.14
0.00	180 GIP	0.00

## Gas Rates

	Choke (inches)	Pressure (psig)	Gas Rate (Mcf/d)



**TRILOBITE  
TESTING, INC.**

# DRILL STEM TEST REPORT

**FLUID SUMMARY**

Samuel Gary Jr. and Associates, Inc.

**22 12s 17w Ellis**

1515 Wynkoop St. Ste 700  
Denver, CO 80202

**Virginia 1-22**

Job Ticket: 52071

**DST#: 1**

ATTN: Clayton Camozzi

Test Start: 2013.03.31 @ 20:20:00

## Mud and Cushion Information

Mud Type: Gel Chem

Cushion Type:

Oil API:

31 deg API

Mud Weight: 9.00 lb/gal

Cushion Length:

ft

Water Salinity:

ppm

Viscosity: 48.00 sec/qt

Cushion Volume:

bbbl

Water Loss: 7.98 in<sup>3</sup>

Gas Cushion Type:

Resistivity: ohm.m

Gas Cushion Pressure:

psig

Salinity: 2500.00 ppm

Filter Cake: inches

## Recovery Information

Recovery Table

Length ft	Description	Volume bbbl
126.00	GOCM 10%g 5 %o 85%m	1.494
10.00	CO 100%	0.140
0.00	180 GIP	0.000

Total Length: 136.00 ft      Total Volume: 1.634 bbl

Num Fluid Samples: 0

Num Gas Bombs: 0

Serial #:

Laboratory Name:

Laboratory Location:

Recovery Comments: SAMPLER 2200 ml CO 100% 250psi 31gravity

