



**TRILOBITE
TESTING, INC.**

DRILL STEM TEST REPORT

Shakespeare Oil Co., Inc.

S13-16-34 Scott, KS

202 W. Main St
Salem, IL 62881

Unruh 1-13

ATTN: Steve Davis

Job Ticket: 51770

DST#: 4

Test Start: 2013.06.28 @ 14:30:00

GENERAL INFORMATION:

Formation: **Johnson**

Deviated: No Whipstock: ft (KB)

Time Tool Opened: 16:24:20

Time Test Ended: 21:47:09

Test Type: Conventional Bottom Hole (Reset)

Tester: Chuck Smith

Unit No: 62

Interval: 4610.00 ft (KB) To 4690.00 ft (KB) (TVD)

Reference Elevations: 3113.00 ft (KB)

Total Depth: 4690.00 ft (KB) (TVD)

3106.00 ft (CF)

Hole Diameter: 7.88 inches Hole Condition: Good

KB to GR/CF: 7.00 ft

Serial #: 8018 Inside

Press @ Run Depth: 48.71 psig @ 4612.00 ft (KB)

Capacity: 8000.00 psig

Start Date: 2013.06.28

End Date: 2013.06.28

Last Calib.: 2013.06.28

Start Time: 14:30:02

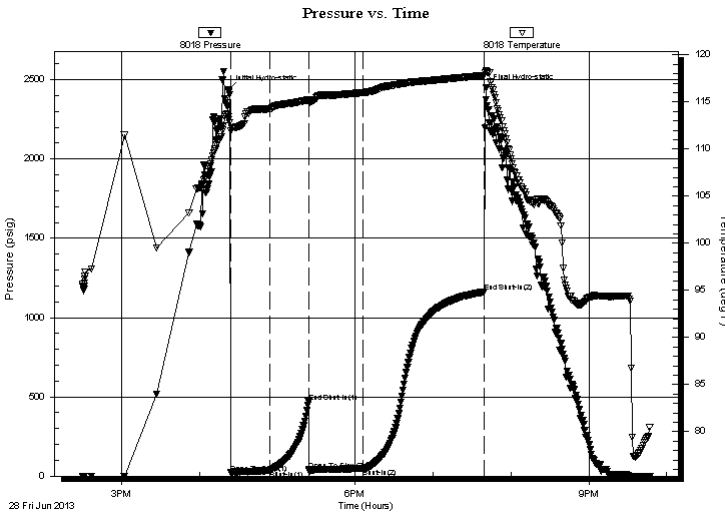
End Time: 21:47:10

Time On Btm: 2013.06.28 @ 16:22:20

Time Off Btm: 2013.06.28 @ 19:40:39

TEST COMMENT: 5" Blow.
No return.
B.O.B. @ 44 min.
No return.

PRESSURE SUMMARY



Time (Min.)	Pressure (psig)	Temp (deg F)	Annotation
0	2435.84	113.43	Initial Hydro-static
2	21.23	111.91	Open To Flow (1)
32	34.92	114.29	Shut-In(1)
62	468.76	115.25	End Shut-In(1)
63	33.68	115.00	Open To Flow (2)
104	48.71	116.00	Shut-In(2)
198	1163.72	117.82	End Shut-In(2)
199	2447.25	118.36	Final Hydro-static

Recovery

Length (ft)	Description	Volume (bbl)
60.00	GOCM 20g 25o 55m	0.30
15.00	GOCM 10g 35o 55m	0.07
0.00	170' Weak GIP	0.00

* Recovery from multiple tests

Gas Rates

Choke (inches)	Pressure (psig)	Gas Rate (Mcf/d)



TRILOBITE TESTING, INC.

DRILL STEM TEST REPORT

Shakespeare Oil Co., Inc.

S13-16-34 Scott, KS

202 W. Main St
Salem, IL 62881

Unruh 1-13

Job Ticket: 51770

DST#: 4

ATTN: Steve Davis

Test Start: 2013.06.28 @ 14:30:00

GENERAL INFORMATION:

Formation: **Johnson**

Deviated: No Whipstock: ft (KB)

Time Tool Opened: 16:24:20

Time Test Ended: 21:47:09

Test Type: Conventional Bottom Hole (Reset)

Tester: Chuck Smith

Unit No: 62

Interval: 4610.00 ft (KB) To 4690.00 ft (KB) (TVD)

Reference Elevations: 3113.00 ft (KB)

Total Depth: 4690.00 ft (KB) (TVD)

3106.00 ft (CF)

Hole Diameter: 7.88 inches Hole Condition: Good

KB to GR/CF: 7.00 ft

Serial #: 6751 Outside

Press @ RunDepth: psig @ 4612.00 ft (KB)

Capacity: 8000.00 psig

Start Date: 2013.06.28

End Date: 2013.06.28

Last Calib.: 2013.06.28

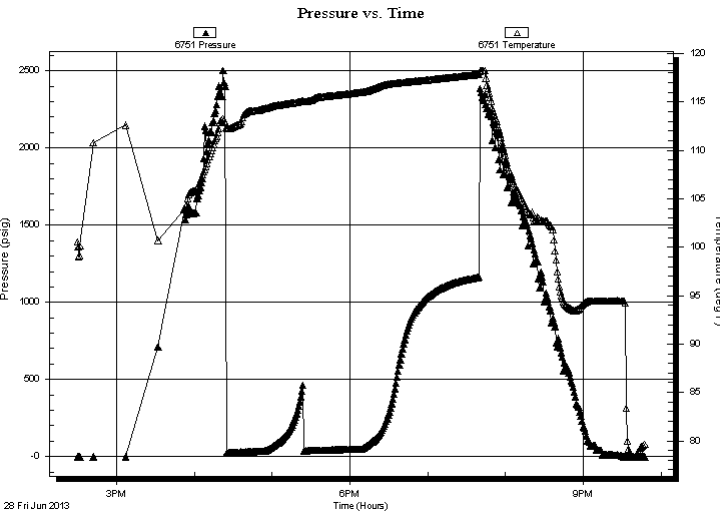
Start Time: 14:30:05

End Time: 21:47:09

Time On Btm:

Time Off Btm:

TEST COMMENT: 5" Blow .
No return.
B.O.B. @ 44 min.
No return.



PRESSURE SUMMARY

Time (Min.)	Pressure (psig)	Temp (deg F)	Annotation

Recovery

Length (ft)	Description	Volume (bbl)
60.00	GOCM 20g 25o 55m	0.30
15.00	GOCM 10g 35o 55m	0.07
0.00	170' Weak GIP	0.00

Gas Rates

	Choke (inches)	Pressure (psig)	Gas Rate (Mcf/d)

* Recovery from multiple tests



**TRILOBITE
TESTING, INC.**

DRILL STEM TEST REPORT

FLUID SUMMARY

Shakespeare Oil Co., Inc.

S13-16-34 Scott, KS

202 W. Main St
Salem, IL 62881

Unruh 1-13

Job Ticket: 51770

DST#: 4

ATTN: Steve Davis

Test Start: 2013.06.28 @ 14:30:00

Mud and Cushion Information

Mud Type: Gel Chem

Cushion Type:

Oil API:

deg API

Mud Weight: 9.00 lb/gal

Cushion Length:

ft

Water Salinity:

ppm

Viscosity: 53.00 sec/qt

Cushion Volume:

bbbl

Water Loss: 9.59 in³

Gas Cushion Type:

Resistivity: ohm.m

Gas Cushion Pressure:

psig

Salinity: 8000.00 ppm

Filter Cake: 1.00 inches

Recovery Information

Recovery Table

Length ft	Description	Volume bbbl
60.00	GOCM 20g 25o 55m	0.295
15.00	GOCM 10g 35o 55m	0.074
0.00	170' Weak GIP	0.000

Total Length: 75.00 ft Total Volume: 0.369 bbl

Num Fluid Samples: 0

Num Gas Bombs: 0

Serial #:

Laboratory Name:

Laboratory Location:

Recovery Comments:

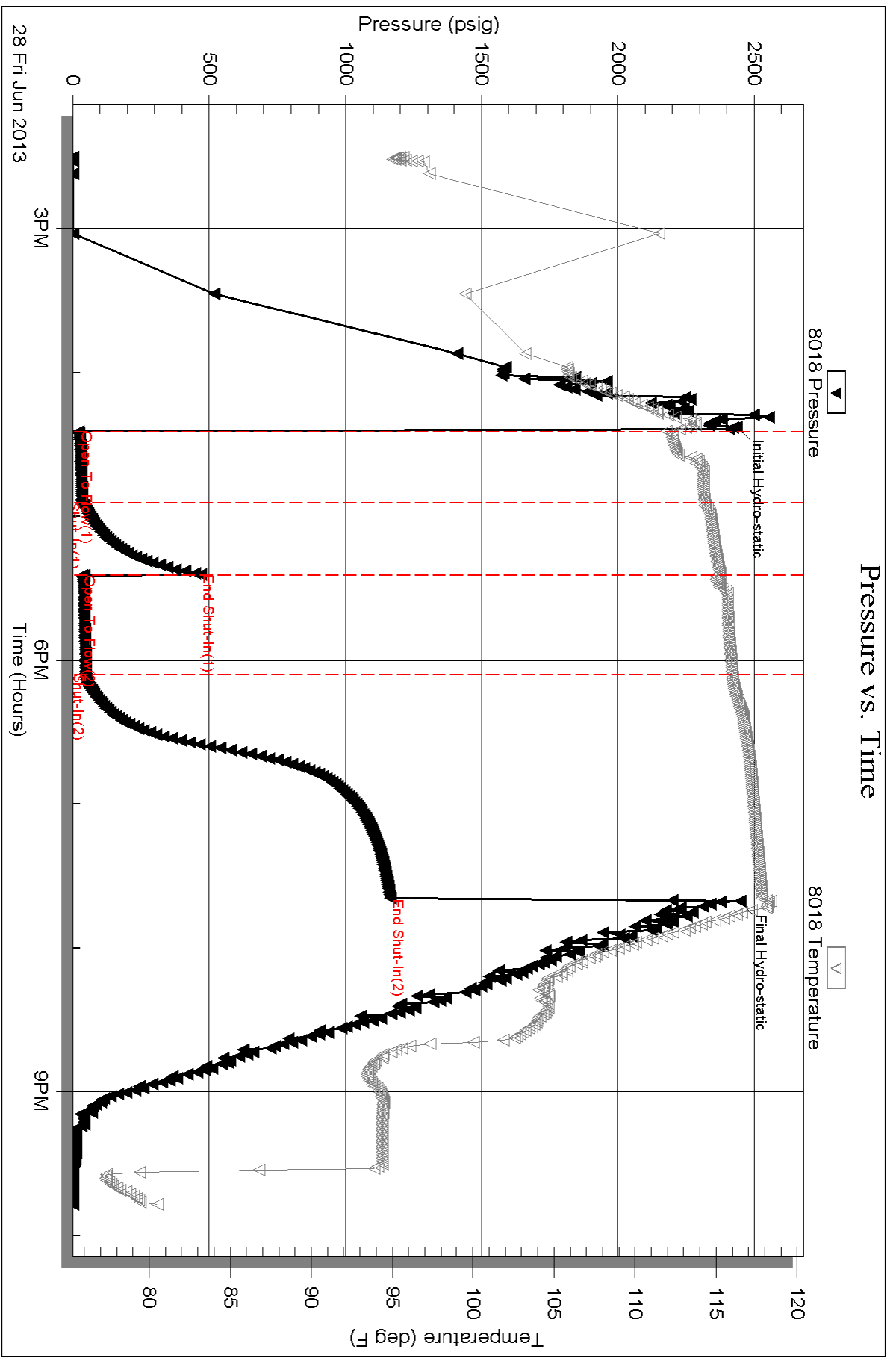
Serial #: 8018

Inside

Shakespeare Oil Co., Inc.

Unruh 1-13

DST Test Number: 4



Serial #: 6751

Outside Shakespeare Oil Co., Inc.

Unruh 1-13

DST Test Number: 4

