



**TRILOBITE  
TESTING, INC.**

# DRILL STEM TEST REPORT

Shakespeare Oil Co., Inc.

**S9-16-34 Scott, KS**

202 W. Main St.  
Salem, IL 62881

**Tucker #1-9**

Job Ticket: 51758

**DST#: 3**

ATTN: Tim Priest

Test Start: 2013.06.07 @ 05:45:00

## GENERAL INFORMATION:

Formation: **LKC 'J'**

Deviated: No Whipstock: ft (KB)

Time Tool Opened: 07:30:50

Time Test Ended: 12:19:09

Test Type: Conventional Bottom Hole (Reset)

Tester: Chuck Smith

Unit No: 62

**Interval: 4275.00 ft (KB) To 4305.00 ft (KB) (TVD)**

Total Depth: 4305.00 ft (KB) (TVD)

Hole Diameter: 7.88 inches Hole Condition: Good

Reference Elevations: 3140.00 ft (KB)

3130.00 ft (CF)

KB to GR/CF: 10.00 ft

**Serial #: 8018**

**Inside**

Press @ Run Depth: 334.19 psig @ 4278.00 ft (KB)

Start Date: 2013.06.07

End Date: 2013.06.07

Start Time: 05:45:02

End Time: 12:19:10

Capacity: 8000.00 psig

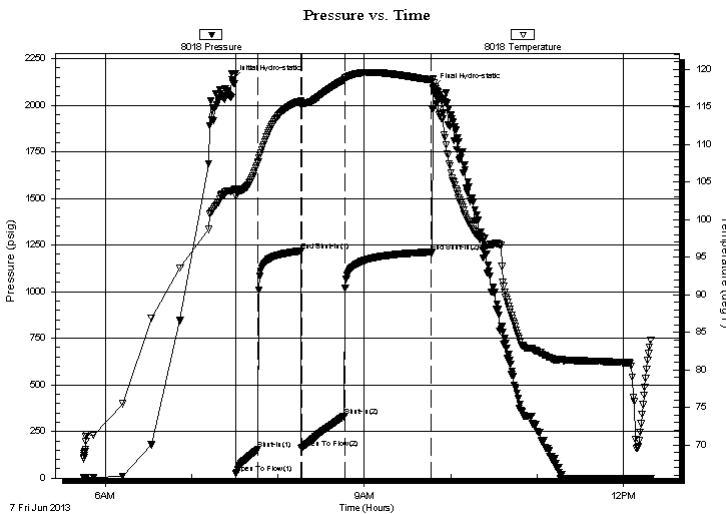
Last Calib.: 2013.06.07

Time On Btm: 2013.06.07 @ 07:28:20

Time Off Btm: 2013.06.07 @ 09:47:40

**TEST COMMENT:** B.O.B. @ 9 min.  
No return.  
B.O.B. @ 9 min.  
No return.

## PRESSURE SUMMARY



Time (Min.)	Pressure (psig)	Temp (deg F)	Annotation
0	2134.58	103.79	Initial Hydro-static
3	24.87	103.08	Open To Flow (1)
18	155.44	107.62	Shut-In(1)
48	1217.79	115.73	End Shut-In(1)
48	159.56	115.21	Open To Flow (2)
78	334.19	118.56	Shut-In(2)
138	1212.21	118.56	End Shut-In(2)
140	2092.33	118.67	Final Hydro-static

## Recovery

Length (ft)	Description	Volume (bbl)
486.00	W 100w	5.72
183.00	WM 45w 55m	2.57
30.00	OSM 100m	0.42

## Gas Rates

	Choke (inches)	Pressure (psig)	Gas Rate (Mcf/d)

\* Recovery from multiple tests



**TRILOBITE  
TESTING, INC.**

# DRILL STEM TEST REPORT

**FLUID SUMMARY**

Shakespeare Oil Co., Inc.

**S9-16-34 Scott, KS**

202 W. Main St.  
Salem, IL 62881

**Tucker #1-9**

Job Ticket: 51758

**DST#: 3**

ATTN: Tim Priest

Test Start: 2013.06.07 @ 05:45:00

## Mud and Cushion Information

Mud Type: Gel Chem

Cushion Type:

Oil API:

deg API

Mud Weight: 9.00 lb/gal

Cushion Length:

ft

Water Salinity:

50000 ppm

Viscosity: 60.00 sec/qt

Cushion Volume:

bbbl

Water Loss: 8.79 in<sup>3</sup>

Gas Cushion Type:

Resistivity: ohm.m

Gas Cushion Pressure:

psig

Salinity: 6000.00 ppm

Filter Cake: 1.00 inches

## Recovery Information

Recovery Table

Length ft	Description	Volume bbl
486.00	W 100w	5.724
183.00	WM 45w 55m	2.567
30.00	OSM 100m	0.421

Total Length: 699.00 ft      Total Volume: 8.712 bbl

Num Fluid Samples: 0

Num Gas Bombs: 0

Serial #:

Laboratory Name:

Laboratory Location:

Recovery Comments: RW: .145 @ 75 Degrees F = 50000 PPM.

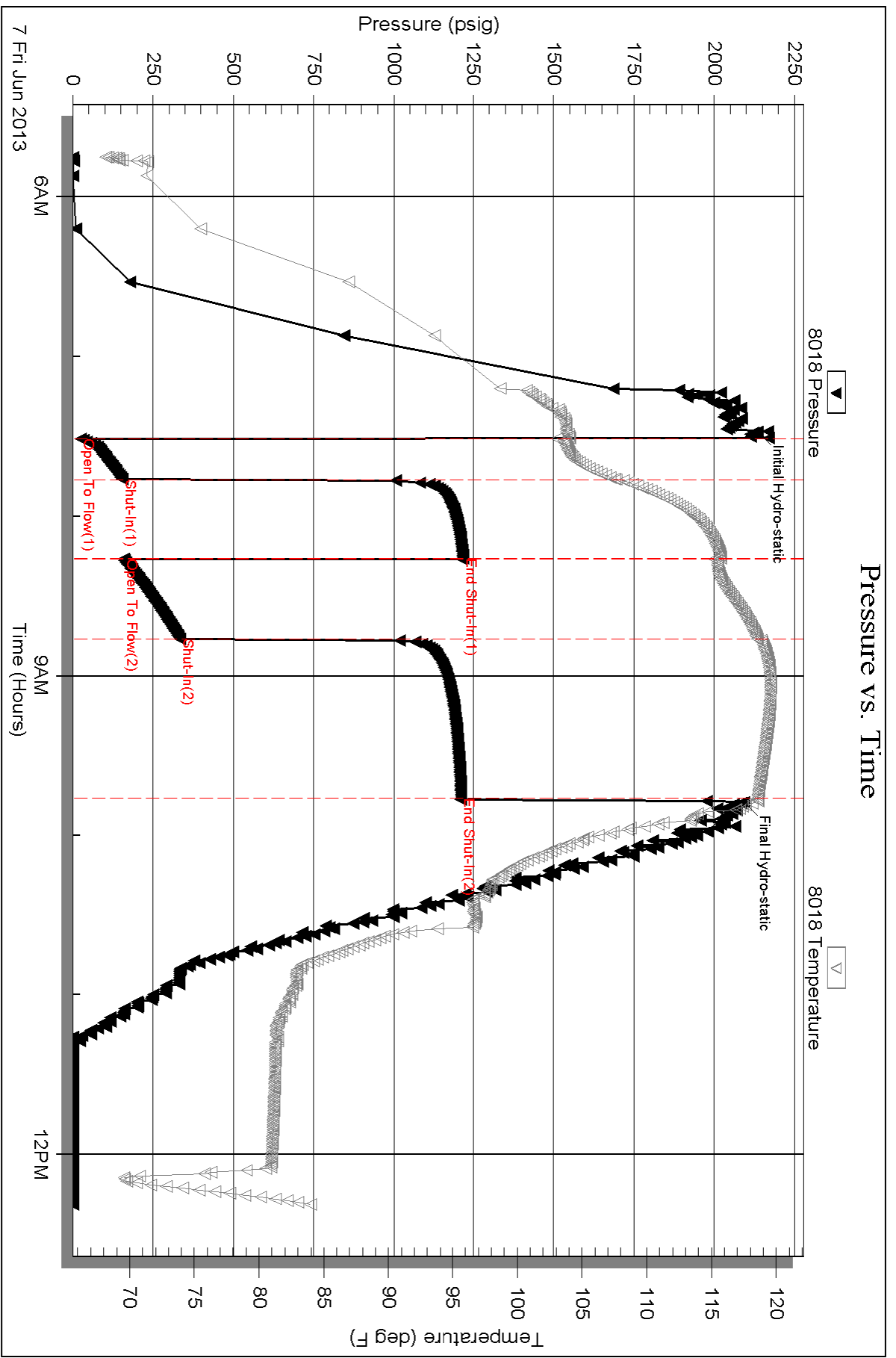
Serial #: 8018

Inside

Shakespeare Oil Co., Inc.

Tucker #1-9

DST Test Number: 3



Triobite Testing, Inc

Ref. No: 51758

Printed: 2013.06.07 @ 13:01:23