



**TRILOBITE TESTING, INC.**

# DRILL STEM TEST REPORT

Shakespeare Oil Co., Inc.

**S9-16-34 Scott, KS**

202 W. Main St.  
Salem, IL 62881

**Tucker #1-9**

Job Ticket: 53302

**DST#: 5**

ATTN: Tim Priest

Test Start: 2013.06.09 @ 02:31:00

## GENERAL INFORMATION:

Formation: **Marmaton c**

Deviated: No Whipstock: ft (KB)

Time Tool Opened: 04:44:30

Time Test Ended: 09:53:39

Test Type: Conventional Bottom Hole (Reset)

Tester: Cornelio Landa III (

Unit No: 62

**Interval: 4486.00 ft (KB) To 4512.00 ft (KB) (TVD)**

Total Depth: 4512.00 ft (KB) (TVD)

Hole Diameter: 7.88 inches Hole Condition: Good

Reference Elevations: 3140.00 ft (KB)

3130.00 ft (CF)

KB to GR/CF: 10.00 ft

**Serial #: 8018 Inside**

Press @ Run Depth: 66.18 psig @ 4494.00 ft (KB)

Start Date: 2013.06.09

End Date: 2013.06.09

Start Time: 02:31:02

End Time: 09:53:40

Capacity: 8000.00 psig

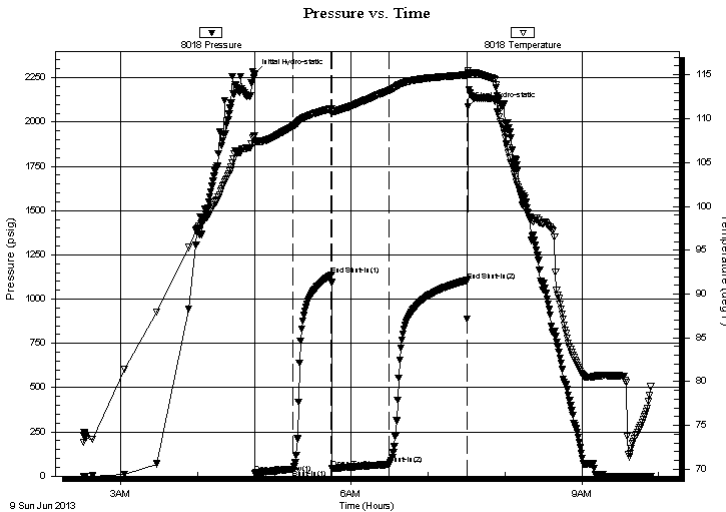
Last Calib.: 1899.12.30

Time On Btm: 2013.06.09 @ 04:44:20

Time Off Btm: 2013.06.09 @ 07:31:00

**TEST COMMENT:** IF: 1 3/4 Blow  
IS: No return  
FF: Weak surface blow after 5 min open- died 10 min later  
FS: No return

## PRESSURE SUMMARY



Time (Min.)	Pressure (psig)	Temp (deg F)	Annotation
0	2271.81	108.04	Initial Hydro-static
1	16.87	107.17	Open To Flow (1)
31	39.29	109.13	Shut-In(1)
60	1135.02	111.15	End Shut-In(1)
61	42.82	110.61	Open To Flow (2)
106	66.18	113.22	Shut-In(2)
166	1104.71	115.00	End Shut-In(2)
167	2088.35	115.51	Final Hydro-static

## Recovery

Length (ft)	Description	Volume (bbl)
15.00	Ow m w oil specs 10o 10w 80m	0.07
30.00	Wm w oil specs 40w 60m	0.15

## Gas Rates

	Choke (inches)	Pressure (psig)	Gas Rate (Mcf/d)

\* Recovery from multiple tests



**TRILOBITE  
TESTING, INC.**

# DRILL STEM TEST REPORT

**FLUID SUMMARY**

Shakespeare Oil Co., Inc.

**S9-16-34 Scott, KS**

202 W. Main St.  
Salem, IL 62881

**Tucker #1-9**

Job Ticket: 53302

**DST#: 5**

ATTN: Tim Priest

Test Start: 2013.06.09 @ 02:31:00

## Mud and Cushion Information

Mud Type: Gel Chem

Mud Weight: 9.00 lb/gal

Viscosity: 53.00 sec/qt

Water Loss: 8.79 in<sup>3</sup>

Resistivity: ohm.m

Salinity: 7500.00 ppm

Filter Cake: 1.00 inches

Cushion Type:

Cushion Length: ft

Cushion Volume: bbl

Gas Cushion Type:

Gas Cushion Pressure: psig

Oil API:

Water Salinity: deg API

ppm

## Recovery Information

Recovery Table

Length ft	Description	Volume bbl
15.00	Ow m w oil specs 10o 10w 80m	0.074
30.00	Wm w oil specs 40w 60m	0.148

Total Length: 45.00 ft      Total Volume: 0.222 bbl

Num Fluid Samples: 0

Num Gas Bombs: 0

Serial #:

Laboratory Name:

Laboratory Location:

Recovery Comments:

### Pressure vs. Time

