



TRILOBITE TESTING, INC.

DRILL STEM TEST REPORT

Berexco LLC.
 2020 N. Bramblewood
 Wichita KS 67206
 ATTN: David Gould

29-23s-23w, Hodgeman, KS
Bradford #1-29
 Job Ticket: 54282 **DST#: 1**
 Test Start: 2013.07.05 @ 06:55:00

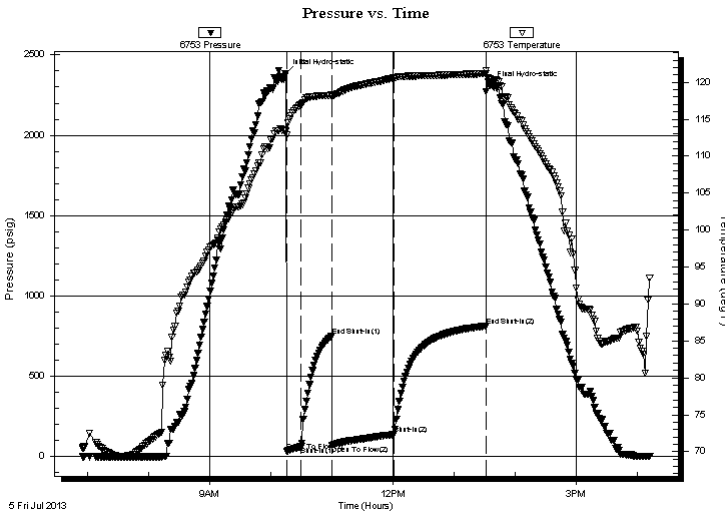
GENERAL INFORMATION:

Formation: **Miss**
 Deviated: No Whipstock: ft (KB)
 Test Type: Conventional Bottom Hole (Initial)
 Time Tool Opened: 10:15:30 Tester: Brett Dickinson
 Time Test Ended: 16:13:30 Unit No: 59
 Interval: **4698.00 ft (KB) To 4704.00 ft (KB) (TVD)** Reference Elevations: 2434.00 ft (KB)
 Total Depth: 4704.00 ft (KB) (TVD) 2422.00 ft (CF)
 Hole Diameter: 7.88 inches Hole Condition: Fair KB to GR/CF: 12.00 ft

Serial #: 6753 Inside
 Press @ Run Depth: 137.50 psig @ 4699.00 ft (KB) Capacity: 8000.00 psig
 Start Date: 2013.07.05 End Date: 2013.07.05 Last Calib.: 2013.07.05
 Start Time: 06:55:05 End Time: 16:13:30 Time On Btm: 2013.07.05 @ 10:14:30
 Time Off Btm: 2013.07.05 @ 13:35:30

TEST COMMENT: IF-3 1/4" blow
 IS- No blow
 FF-BOB in 60 min
 FSI-3/4" blow in 30 min died in 75 min

PRESSURE SUMMARY



Time (Min.)	Pressure (psig)	Temp (deg F)	Annotation
0	2385.72	113.39	Initial Hydro-static
1	34.88	112.83	Open To Flow (1)
16	62.45	117.00	Shut-In(1)
46	751.18	118.25	End Shut-In(1)
46	69.29	118.03	Open To Flow (2)
107	137.50	120.57	Shut-In(2)
197	812.70	121.19	End Shut-In(2)
201	2309.62	120.44	Final Hydro-static

Recovery

Length (ft)	Description	Volume (bbl)
120.00	Water	0.59
180.00	GO 25%G 75%O	0.89
0.00	225ft GIP	0.00

Gas Rates

Choke (inches)	Pressure (psig)	Gas Rate (Mcf/d)



**TRILOBITE
TESTING, INC.**

DRILL STEM TEST REPORT

FLUID SUMMARY

Berexco LLC.

29-23s-23w, Hodgeman, KS

2020 N. Bramblewood
Wichita KS 67206

Bradford #1-29

Job Ticket: 54282

DST#: 1

ATTN: David Gould

Test Start: 2013.07.05 @ 06:55:00

Mud and Cushion Information

Mud Type: Gel Chem

Cushion Type:

Oil API:

37 deg API

Mud Weight: 9.00 lb/gal

Cushion Length:

ft

Water Salinity:

ppm

Viscosity: 51.00 sec/qt

Cushion Volume:

bbbl

Water Loss: 7.20 in³

Gas Cushion Type:

Resistivity: ohm.m

Gas Cushion Pressure:

psig

Salinity: 3000.00 ppm

Filter Cake: inches

Recovery Information

Recovery Table

Length ft	Description	Volume bbl
120.00	Water	0.590
180.00	GO 25%G 75%O	0.885
0.00	225ft GIP	0.000

Total Length: 300.00 ft Total Volume: 1.475 bbl

Num Fluid Samples: 0

Num Gas Bombs: 0

Serial #:

Laboratory Name:

Laboratory Location:

Recovery Comments:

Serial #: 6753

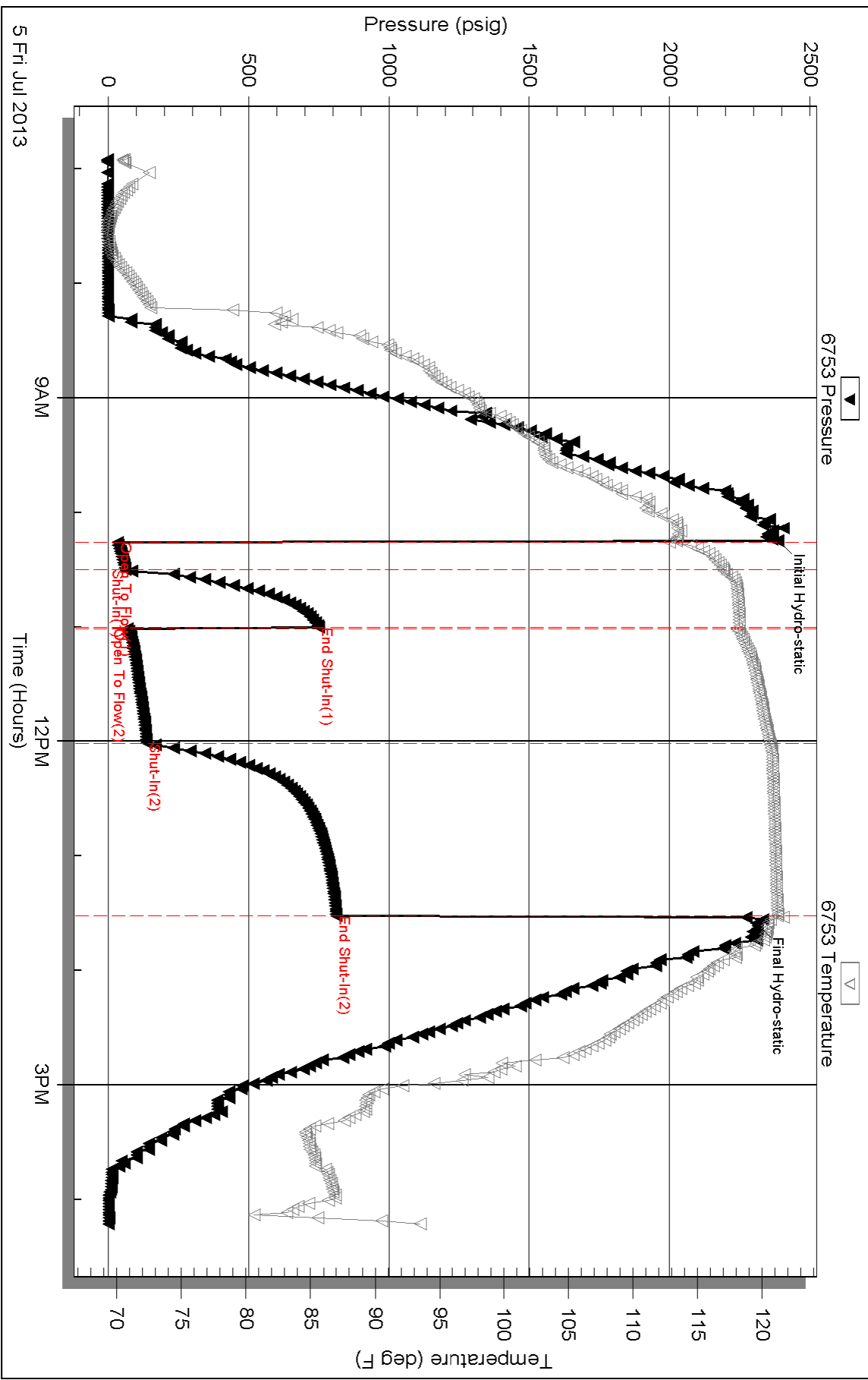
Inside

Berexco LLC

Bradford #1-29

DST Test Number: 1

Pressure vs. Time



Triobite Testing, Inc

Ref. No: 54282

Printed: 2013.07.05 @ 16:39:09