



**TRILOBITE  
TESTING, INC**

## DRILL STEM TEST REPORT

Bramwell Petroleum Inc.

15183 S.W. 25th Ave  
Spivey KS 67142

ATTN: Doug Bramwell

7-30s-8w Kingman Ks

Springer Hollow Farm

Job Ticket: 50842 DST#: 2

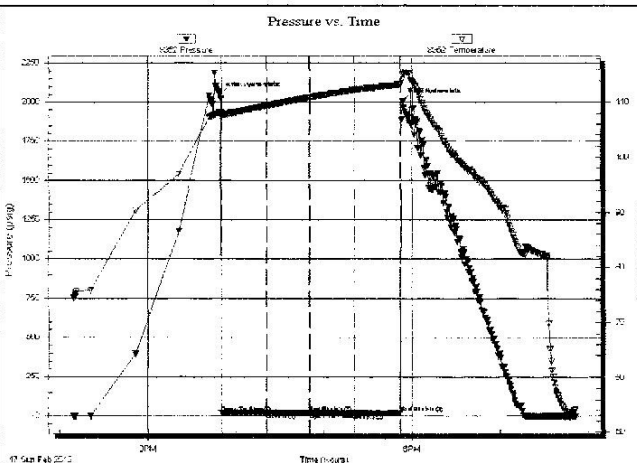
Test Start: 2013.02.17 @ 14:09:25

### GENERAL INFORMATION:

Formation: Miss.  
 Deviated: No Whipstock: ft (KB)  
 Time Tool Opened: 15:50:10  
 Time Test Ended: 19:51:55  
 Interval: 4235.00 ft (KB) To 4300.00 ft (KB) (TVD)  
 Total Depth: 4300.00 ft (KB) (TVD)  
 Hole Diameter: 7.88 inches Hole Condition: Fair  
 Test Type: Conventional Bottom Hole (Reset)  
 Tester: Gary Pevoteaux  
 Unit No: 56  
 Reference Elevations: 1613.00 ft (KB)  
 1603.00 ft (CF)  
 KB to GR/CF: 10.00 ft

Serial #: 8352 Outside  
 Press@RunDepth: 19.92 psig @ 4236.00 ft (KB) Capacity: 8000.00 psig  
 Start Date: 2013.02.17 End Date: 2013.02.17 Last Calib.: 2013.02.17  
 Start Time: 14:09:25 End Time: 19:51:55 Time On Btm: 2013.02.17 @ 15:49:10  
 Time Off Btm: 2013.02.17 @ 17:53:40

TEST COMMENT: IF:Weak blow . 1/4" decreasing.  
 IS:No blow .  
 FF:No blow .  
 FS:No blow .



### PRESSURE SUMMARY

Time (Min.)	Pressure (psig)	Temp (deg F)	Annotation
0	2049.57	108.05	Initial Hydro-static
1	21.44	107.49	Open To Flow (1)
32	22.06	109.41	Shut-In(1)
61	21.30	110.90	End Shut-In(1)
62	21.29	110.92	Open To Flow (2)
92	19.92	112.27	Shut-In(2)
124	19.62	113.29	End Shut-In(2)
125	2005.86	115.08	Final Hydro-static

### Recovery

Length (ft)	Description	Volume (bbl)
1.00	Heavy Gritty Mud	0.00

\* Recovery from multiple tests

### Gas Rates

Choke (inches)	Pressure (psig)	Gas Rate (Mcf/d)