



**TRILOBITE  
TESTING, INC.**

# DRILL STEM TEST REPORT

Hutchinson Oil Co.  
P.O. Box 521  
Derby, KS 67037-0521  
ATTN: Jeff Burk

**12-21s.-12w. Stafford Co.**  
**Osborne 2B**  
Job Ticket: 50477      **DST#: 1**  
Test Start: 2013.04.10 @ 16:27:19

## GENERAL INFORMATION:

Formation: **Lansing B / D**  
Deviated: No Whipstock: 0.00 ft (KB)  
Time Tool Opened: 18:43:19  
Time Test Ended: 23:45:34  
Interval: **3194.00 ft (KB) To 3235.00 ft (KB) (TVD)**  
Total Depth: 3235.00 ft (KB) (TVD)  
Hole Diameter: 7.88 inches Hole Condition: Fair  
Test Type: Conventional Bottom Hole (Initial)  
Tester: Ryan Reynolds  
Unit No: 48  
Reference Elevations: 1828.00 ft (KB)  
1817.00 ft (CF)  
KB to GR/CF: 11.00 ft

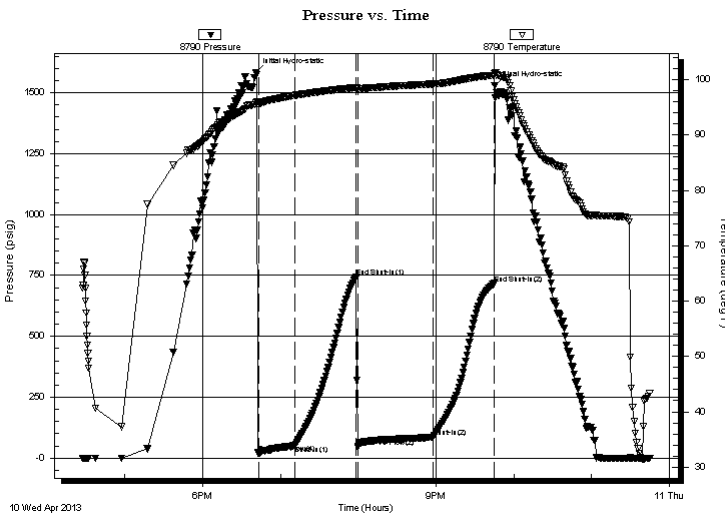
## Serial #: 8790

Inside

Press @ Run Depth: 85.45 psig @ 3195.00 ft (KB) Capacity: 8000.00 psig  
Start Date: 2013.04.10 End Date: 2013.04.10 Last Calib.: 2013.04.10  
Start Time: 16:27:24 End Time: 23:45:33 Time On Btm: 2013.04.10 @ 18:40:49  
Time Off Btm: 2013.04.10 @ 21:45:19

TEST COMMENT: IF: Strong blow . BOB @ 5 1/2 min. No GTS.  
IS: Weak surf. Blow  
FF: Strong blow . BOB immed. No GTS.  
FS: No blow

## PRESSURE SUMMARY



Time (Min.)	Pressure (psig)	Temp (deg F)	Annotation
0	1583.61	95.75	Initial Hydro-static
3	18.82	95.79	Open To Flow (1)
31	50.83	97.17	Shut-In(1)
78	744.37	98.58	End Shut-In(1)
79	45.25	98.38	Open To Flow (2)
137	85.45	99.22	Shut-In(2)
184	716.52	100.81	End Shut-In(2)
185	1528.34	101.15	Final Hydro-static

## Recovery

Length (ft)	Description	Volume (bbl)
20.00	Clean oil 100%oil	0.10
100.00	GOCM 30%gas, 30%oil, 40%mud	0.49
40.00	GOCM 5%gas, 10%oil, 85%mud	0.20
0.00	1640' GIP	0.00

## Gas Rates

	Choke (inches)	Pressure (psig)	Gas Rate (Mcf/d)



**TRILOBITE  
TESTING, INC.**

# DRILL STEM TEST REPORT

**FLUID SUMMARY**

Hutchinson Oil Co.  
P.O. Box 521  
Derby, KS 67037-0521  
ATTN: Jeff Burk

**12-21s.-12w. Stafford Co.**  
**Osborne 2B**  
Job Ticket: 50477      **DST#: 1**  
Test Start: 2013.04.10 @ 16:27:19

## Mud and Cushion Information

Mud Type: Gel Chem	Cushion Type:	Oil API:	deg API
Mud Weight: 9.00 lb/gal	Cushion Length: ft	Water Salinity:	3000 ppm
Viscosity: 48.00 sec/qt	Cushion Volume: bbl		
Water Loss: 7.99 in <sup>3</sup>	Gas Cushion Type:		
Resistivity: ohm.m	Gas Cushion Pressure: psig		
Salinity: 3000.00 ppm			
Filter Cake: 0.20 inches			

## Recovery Information

Recovery Table

Length ft	Description	Volume bbl
20.00	Clean oil 100%oil	0.098
100.00	GOCM 30%gas, 30%oil, 40%mud	0.492
40.00	GOCM 5%gas, 10%oil, 85%mud	0.197
0.00	1640' GIP	0.000

Total Length: 160.00 ft      Total Volume: 0.787 bbl  
 Num Fluid Samples: 0      Num Gas Bombs: 0      Serial #: none  
 Laboratory Name:      Laboratory Location:  
 Recovery Comments:

Serial #: 8790

Inside

Hutchinson Oil Co.

Osborne 2B

DST Test Number: 1

