



DRILL STEM TEST REPORT

Prepared For: **FG Holl Company LLC**

9431 E. Central STE. 100 Wichita Kansas
67208-2563

ATTN: Frank Greenbaum

Binford/Campbell #1

31/20s/15w/Barton

Start Date: 2013.05.06 @ 00:40:00

End Date: 2013.05.06 @ 09:47:30

Job Ticket #: 17582 DST #: 6

Superior Testers Enterprises LLC
PO Box 138 Great Bend KS 67530
1-800-792-6902

Printed: 2013.05.06 @ 10:30:24



DRILL STEM TEST REPORT

FG Holl Company LLC

31/20s/15w/Barton

9431 E. Central STE. 100 Wichita Kansas 67208-2563

Binford/Campbell #1

Job Ticket: 17582

DST#: 6

ATTN: Frank Greenbaum

Test Start: 2013.05.06 @ 00:40:00

GENERAL INFORMATION:

Formation: **Arbuckle**

Deviated: No Whipstock: ft (KB)

Time Tool Opened: 03:15:00

Time Test Ended: 09:47:30

Test Type: Conventional Bottom Hole (Initial)

Tester: Shane Konzem

Unit No: 3330/50/Great Bend

Interval: **3820.00 ft (KB) To 3828.00 ft (KB) (TVD)**

Reference Elevations: 2022.00 ft (KB)

Total Depth: 3828.00 ft (KB) (TVD)

2014.00 ft (CF)

Hole Diameter: 7.88 inches Hole Condition: Poor

KB to GR/CF: 8.00 ft

Serial #: 8405 Inside

Press @ RunDepth: 857.98 psia @ 3824.00 ft (KB)

Capacity: 5000.00 psia

Start Date: 2013.05.06

End Date: 2013.05.06

Last Calib.: 2013.05.06

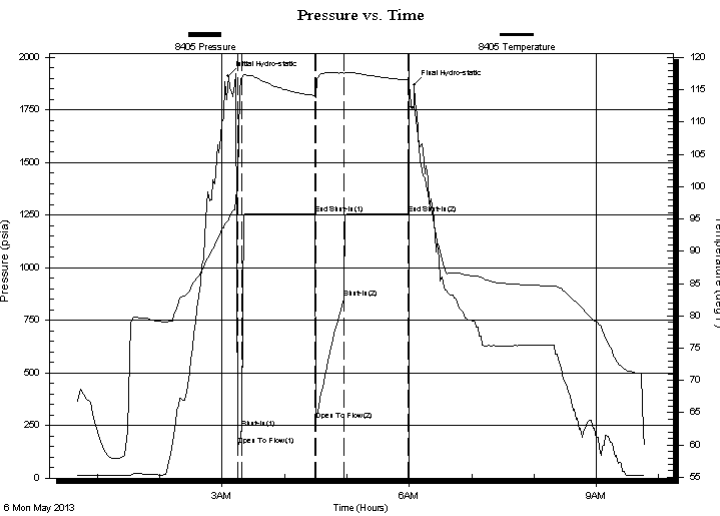
Start Time: 00:40:00

End Time: 09:47:30

Time On Btm: 2013.05.06 @ 03:06:00

Time Off Btm: 2013.05.06 @ 06:05:00

TEST COMMENT: 1st Open/ 4 Minutes. Strong blow built to bottom of bucket in 40 seconds.
 1st Shut In/ 60 Minutes. Good blow back to bottom of 5 gallon bucket in 2 minutes died of to 6 inches.
 2nd Open/ 30 Minutes. Good blow to bottom of 5 gallon bucket in 1 minute and 30 seconds. No gas to surface
 2nd Shut In/ 60 Minutes. Good blow back built to bottom of 5 gallon bucket.



PRESSURE SUMMARY

Time (Min.)	Pressure (psia)	Temp (deg F)	Annotation
0	1912.77	94.79	Initial Hydro-static
9	155.31	101.22	Open To Flow (1)
13	236.03	116.83	Shut-In(1)
84	1258.34	114.06	End Shut-In(1)
84	277.80	113.78	Open To Flow (2)
112	857.98	117.53	Shut-In(2)
173	1257.25	116.55	End Shut-In(2)
179	1868.96	112.23	Final Hydro-static

Recovery

Length (ft)	Description	Volume (bbl)
0.00	No gas	0.00
248.00	trace oil, 38% mud, 62% w ater	3.48
186.00	40% w ater, 60% mud	2.61
1302.00	100% w ater	18.26
0.00	chloride recov 28000 ppm	0.00
0.00	resist recov .20 ohms at 40 degrees.	0.00

Gas Rates

Choke (inches)	Pressure (psia)	Gas Rate (Mcf/d)



DRILL STEM TEST REPORT

FG Holl Company LLC

31/20s/15w/Barton

9431 E. Central STE. 100 Wichita Kansas 67208-2563

Binford/Campbell #1

Job Ticket: 17582

DST#: 6

ATTN: Frank Greenbaum

Test Start: 2013.05.06 @ 00:40:00

GENERAL INFORMATION:

Formation: **Arbuckle**

Deviated: No Whipstock: ft (KB)

Time Tool Opened: 03:15:00

Time Test Ended: 09:47:30

Test Type: Conventional Bottom Hole (Initial)

Tester: Shane Konzem

Unit No: 3330/50/Great Bend

Interval: 3820.00 ft (KB) To 3828.00 ft (KB) (TVD)

Reference Elevations: 2022.00 ft (KB)

Total Depth: 3828.00 ft (KB) (TVD)

2014.00 ft (CF)

Hole Diameter: 7.88 inches Hole Condition: Poor

KB to GR/CF: 8.00 ft

Serial #: 8400 Outside

Press @ RunDepth: 1258.15 psia @ 3825.00 ft (KB)

Capacity: 5000.00 psia

Start Date: 2013.05.06

End Date: 2013.05.06

Last Calib.: 2013.05.06

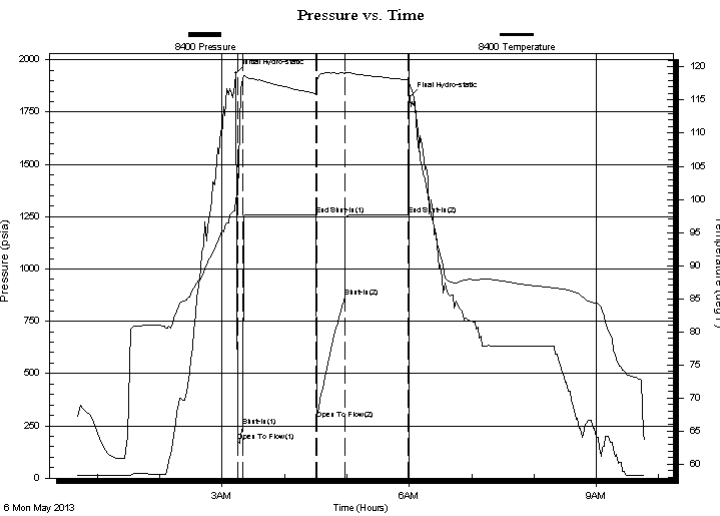
Start Time: 00:40:00

End Time: 09:47:00

Time On Btm: 2013.05.06 @ 03:13:30

Time Off Btm: 2013.05.06 @ 06:00:30

TEST COMMENT: 1st Open/ 4 Minutes. Strong blow built to bottom of bucket in 40 seconds.
 1st Shut In/ 60 Minutes. Good blow back to bottom of 5 gallon bucket in 2 minutes died of to 6 inches.
 2nd Open/ 30 Minutes. Good blow to bottom of 5 gallon bucket in 1 minute and 30 seconds. No gas to surface
 2nd Shut In/ 60 Minutes. Good blow back built to bottom of 5 gallon bucket.



PRESSURE SUMMARY

Time (Min.)	Pressure (psia)	Temp (deg F)	Annotation
0	1935.76	100.30	Initial Hydro-static
2	175.64	100.63	Open To Flow (1)
6	246.82	118.31	Shut-In(1)
77	1258.59	116.00	End Shut-In(1)
78	284.08	117.62	Open To Flow (2)
105	864.90	119.01	Shut-In(2)
166	1258.15	118.07	End Shut-In(2)
167	1825.04	117.14	Final Hydro-static

Recovery

Length (ft)	Description	Volume (bbl)
0.00	No gas	0.00
248.00	trace oil, 38% mud, 62% w ater	3.48
186.00	40% w ater, 60% mud	2.61
1302.00	100% w ater	18.26
0.00	chloride recov 28000 ppm	0.00
0.00	resist recov .20 ohms at 40 degrees.	0.00

Gas Rates

	Choke (inches)	Pressure (psia)	Gas Rate (Mcf/d)



DRILL STEM TEST REPORT

TOOL DIAGRAM

FG Holl Company LLC

31/20s/15w/Barton

9431 E. Central STE. 100 Wichita Kansas 67208-2563

Binford/Campbell #1

Job Ticket: 17582

DST#: 6

ATTN: Frank Greenbaum

Test Start: 2013.05.06 @ 00:40:00

Tool Information

Drill Pipe:	Length: 3808.00 ft	Diameter: 3.80 inches	Volume: 53.42 bbl	Tool Weight: 2000.00 lb
Heavy Wt. Pipe:	Length: 0.00 ft	Diameter: 0.00 inches	Volume: 0.00 bbl	Weight set on Packer: 20000.00 lb
Drill Collar:	Length: 0.00 ft	Diameter: 0.00 inches	Volume: 0.00 bbl	Weight to Pull Loose: 58000.00 lb
			<u>Total Volume: 53.42 bbl</u>	Tool Chased 0.00 ft
Drill Pipe Above KB:	11.00 ft			String Weight: Initial 42000.00 lb
Depth to Top Packer:	3820.00 ft			Final 50000.00 lb
Depth to Bottom Packer:	ft			
Interval between Packers:	8.00 ft			
Tool Length:	31.00 ft			
Number of Packers:	1	Diameter: 6.75 inches		

Tool Comments:

Tool Description	Length (ft)	Serial No.	Position	Depth (ft)	Accum. Lengths
SHut-InTool	5.00		Inside	3802.00	
Hydraulic Tool	5.00			3807.00	
Jars	6.00			3813.00	
Safety Joint	2.00			3815.00	
Packer	5.00			3820.00	23.00 Bottom Of Top Packer
Anchor	3.00			3823.00	
Recorder	1.00	8405	Inside	3824.00	
Recorder	1.00	8400	Outside	3825.00	
Bullnose	3.00			3828.00	8.00 Anchor Tool
Total Tool Length:	31.00				



DRILL STEM TEST REPORT

FLUID SUMMARY

FG Holl Company LLC

31/20s/15w/Barton

9431 E. Central STE. 100 Wichita Kansas 67208-2563

Binford/Campbell #1

Job Ticket: 17582

DST#: 6

ATTN: Frank Greenbaum

Test Start: 2013.05.06 @ 00:40:00

Mud and Cushion Information

Mud Type: Gel Chem
 Mud Weight: 9.00 lb/gal
 Viscosity: 48.00 sec/qt
 Water Loss: 9.20 in³
 Resistivity: ohm.m
 Salinity: 6200.00 ppm
 Filter Cake: 1.00 inches

Cushion Type:
 Cushion Length: ft
 Cushion Volume: bbl
 Gas Cushion Type:
 Gas Cushion Pressure: psia

Oil API: deg API
 Water Salinity: ppm

Recovery Information

Recovery Table

Length ft	Description	Volume bbl
0.00	No gas	0.000
248.00	trace oil, 38% mud, 62% w ater	3.479
186.00	40% w ater, 60% mud	2.609
1302.00	100% w ater	18.264
0.00	chloride recov 28000 ppm	0.000
0.00	resist recov .20 ohms at 40 degrees.	0.000

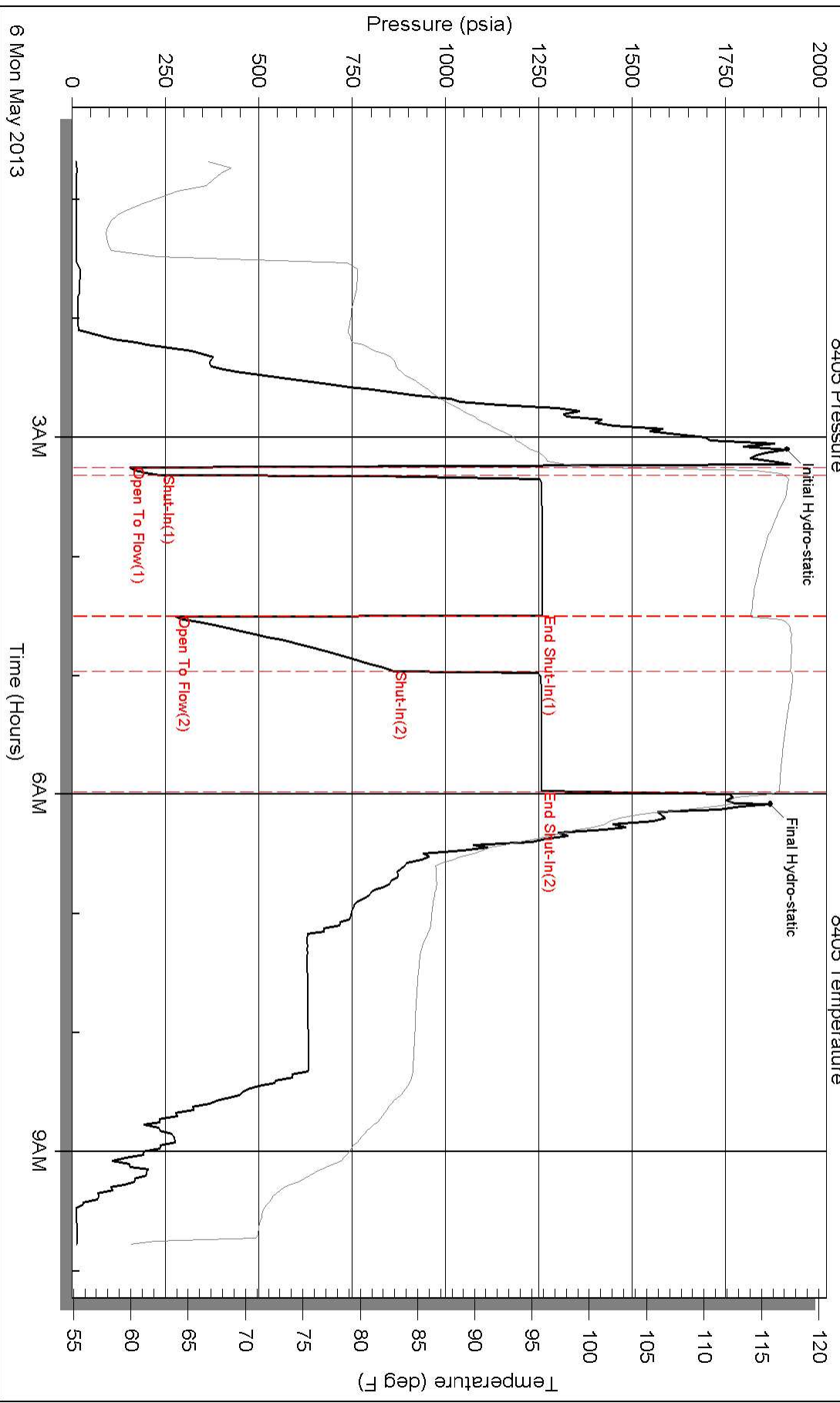
Total Length: 1736.00 ft Total Volume: 24.352 bbl

Num Fluid Samples: 0 Num Gas Bombs: 0 Serial #:

Laboratory Name: Laboratory Location:

Recovery Comments:

Pressure vs. Time



Pressure vs. Time

