



**TRILOBITE  
TESTING, INC.**

# DRILL STEM TEST REPORT

Shakespeare Oil Co, Inc

**11 13s 32w Logan, Ks**

202 W. Main St.  
Salem, IL 62881

**Teeter 1-11**

Job Ticket: 53248

**DST#: 3**

ATTN: Tim Priest

Test Start: 2013.06.21 @ 18:24:00

## GENERAL INFORMATION:

Formation: **LKC - I**

Deviated: No Whipstock: ft (KB)

Time Tool Opened: 20:25:00

Time Test Ended: 01:24:00

Test Type: Conventional Bottom Hole (Reset)

Tester: Bradley Walter

Unit No: 53

**Interval: 4197.00 ft (KB) To 4225.00 ft (KB) (TVD)**

Reference Elevations: 2315.00 ft (KB)

Total Depth: 4225.00 ft (KB) (TVD)

2305.00 ft (CF)

Hole Diameter: 7.88 inches Hole Condition: Good

KB to GR/CF: 10.00 ft

**Serial #: 8522 Outside**

Press @ Run Depth: 56.32 psig @ 4198.00 ft (KB)

Capacity: 8000.00 psig

Start Date: 2013.06.21

End Date:

2013.06.22

Last Calib.:

2013.06.22

Start Time: 18:24:05

End Time:

01:23:59

Time On Btm:

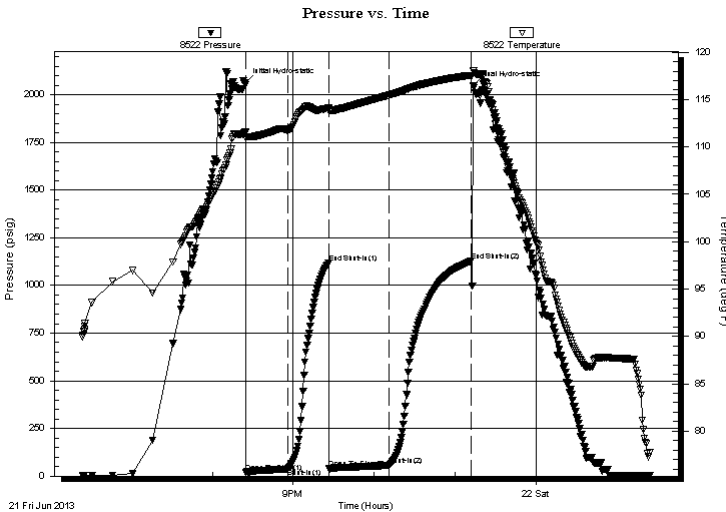
2013.06.21 @ 20:24:45

Time Off Btm:

2013.06.21 @ 23:13:15

**TEST COMMENT:** IF: 1" blow.  
IS: No return.  
FF: 2 3/4" blow.  
FS: No return.

## PRESSURE SUMMARY



Time (Min.)	Pressure (psig)	Temp (deg F)	Annotation
0	2063.64	111.58	Initial Hydro-static
1	20.38	110.96	Open To Flow (1)
32	42.86	111.80	Shut-In(1)
62	1116.77	114.09	End Shut-In(1)
62	41.85	113.77	Open To Flow (2)
107	56.32	115.47	Shut-In(2)
167	1127.43	117.57	End Shut-In(2)
169	2048.03	118.08	Final Hydro-static

## Recovery

Length (ft)	Description	Volume (bbl)
60.00	ocm 20o 80m	0.30
16.00	w ocm 20w 20o 60m	0.08
4.00	oil 100o	0.02
0.00	30' GIP	0.00

\* Recovery from multiple tests

## Gas Rates

	Choke (inches)	Pressure (psig)	Gas Rate (Mcf/d)



**TRILOBITE  
TESTING, INC.**

# DRILL STEM TEST REPORT

**FLUID SUMMARY**

Shakespeare Oil Co, Inc

**11 13s 32w Logan, Ks**

202 W. Main St.  
Salem, IL 62881

**Teeter 1-11**

Job Ticket: 53248

**DST#: 3**

ATTN: Tim Priest

Test Start: 2013.06.21 @ 18:24:00

## Mud and Cushion Information

Mud Type: Gel Chem

Cushion Type:

Oil API:

0 deg API

Mud Weight: 9.00 lb/gal

Cushion Length:

ft

Water Salinity:

43000 ppm

Viscosity: 51.00 sec/qt

Cushion Volume:

bbbl

Water Loss: 6.80 in<sup>3</sup>

Gas Cushion Type:

Resistivity: ohm.m

Gas Cushion Pressure:

psig

Salinity: 2400.00 ppm

Filter Cake: 1.00 inches

## Recovery Information

Recovery Table

Length ft	Description	Volume bbbl
60.00	ocm 20o 80m	0.295
16.00	w ocm 20w 20o 60m	0.079
4.00	oil 100o	0.020
0.00	30' GIP	0.000

Total Length: 80.00 ft      Total Volume: 0.394 bbl

Num Fluid Samples: 0

Num Gas Bombs: 0

Serial #:

Laboratory Name:

Laboratory Location:

Recovery Comments: rw is .170 @ 70F = 43,000ppm

### Pressure vs. Time

