



**TRILOBITE  
TESTING, INC.**

# DRILL STEM TEST REPORT

Venture Resources, Inc.  
2265 S. Wadsworth  
Suite 205  
Lakewood, CO. 80227  
ATTN: Brad Rine

**12-11s-18w-Ellis**

**Ridler A West #7**

Job Ticket: 52203

**DST#: 3**

Test Start: 2013.03.16 @ 01:43:15

## GENERAL INFORMATION:

Formation: **Arbuckle**

Deviated: No Whipstock: 0.00 ft (KB)

Time Tool Opened: 04:45:00

Time Test Ended: 09:42:00

Test Type: Conventional Bottom Hole (Reset)

Tester: Jason McLemore

Unit No: 54

**Interval: 3362.00 ft (KB) To 3428.00 ft (KB) (TVD)**

Total Depth: 3428.00 ft (KB) (TVD)

Hole Diameter: 7.80 inches Hole Condition: Good

Reference Elevations: 1916.00 ft (KB)

1909.00 ft (CF)

KB to GR/CF: 7.00 ft

**Serial #: 8789**

**Inside**

Press @ Run Depth: 424.93 psig @ 3397.00 ft (KB)

Start Date: 2013.03.16

End Date: 2013.03.16

Start Time: 01:43:17

End Time: 09:42:00

Capacity: 8000.00 psig

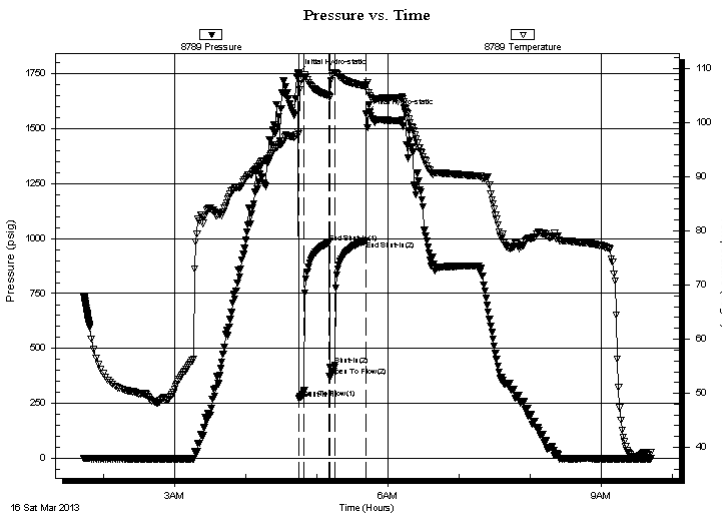
Last Calib.: 2013.03.16

Time On Btm: 2013.03.16 @ 04:44:30

Time Off Btm: 2013.03.16 @ 05:42:00

**TEST COMMENT:** IFP-Strong, BOB in 40 Seconds  
ISI-Dead  
FFP-Strong, BOB in 40 Seconds  
FSI-Dead

## PRESSURE SUMMARY



Time (Min.)	Pressure (psig)	Temp (deg F)	Annotation
0	1749.89	98.37	Initial Hydro-static
1	273.58	98.02	Open To Flow (1)
5	309.46	108.50	Shut-In(1)
26	980.65	105.01	End Shut-In(1)
27	371.83	104.63	Open To Flow (2)
31	424.93	109.28	Shut-In(2)
58	989.46	106.75	End Shut-In(2)
58	1567.08	107.05	Final Hydro-static

## Recovery

Length (ft)	Description	Volume (bbl)
785.00	GOCMW-15%G-15%O-65%W-5%M	11.01

## Gas Rates

Choke (inches)	Pressure (psig)	Gas Rate (Mcf/d)

\* Recovery from multiple tests



**TRILOBITE  
TESTING, INC.**

# DRILL STEM TEST REPORT

**FLUID SUMMARY**

Venture Resources, Inc.

**12-11s-18w-Ellis**

2265 S. Wadsworth  
Suite 205  
Lakewood, CO. 80227  
ATTN: Brad Rine

**Ridler A West #7**

Job Ticket: 52203

**DST#: 3**

Test Start: 2013.03.16 @ 01:43:15

## Mud and Cushion Information

Mud Type: Gel Chem	Cushion Type:	Oil API:	deg API
Mud Weight: 9.00 lb/gal	Cushion Length: ft	Water Salinity:	27000 ppm
Viscosity: 50.00 sec/qt	Cushion Volume: bbl		
Water Loss: 7.19 in <sup>3</sup>	Gas Cushion Type:		
Resistivity: ohm.m	Gas Cushion Pressure: psig		
Salinity: 1400.00 ppm			
Filter Cake: inches			

## Recovery Information

Recovery Table

Length ft	Description	Volume bbl
785.00	GOCMW-15%G-15%O-65%W-5%M	11.011

Total Length: 785.00 ft      Total Volume: 11.011 bbl

Num Fluid Samples: 0      Num Gas Bombs: 0      Serial #:

Laboratory Name:      Laboratory Location:

Recovery Comments: Sampler-52#, 500ml Gas, 1300ml Oil, 1200ml Mud

### Pressure vs. Time

