



TRILOBITE TESTING, INC.

DRILL STEM TEST REPORT

Woolsey Operating Co.

33-32s-12w Barber Ks

125 N. Market, Ste.1000
Wichita Ks.67202

Bartholow GU#2

ATTN: Scott Alberg

Job Ticket: 50960

DST#: 2

Test Start: 2013.04.08 @ 01:21:34

GENERAL INFORMATION:

Formation: **Miss.**

Deviated: No Whipstock: ft (KB)

Time Tool Opened: 03:40:34

Time Test Ended: 10:56:34

Test Type: Conventional Bottom Hole (Reset)

Tester: Gary Pevoteaux

Unit No: 56

Interval: 4442.00 ft (KB) To 4500.00 ft (KB) (TVD)

Reference Elevations: 1619.00 ft (KB)

Total Depth: 4500.00 ft (KB) (TVD)

1607.00 ft (CF)

Hole Diameter: 7.88 inches Hole Condition: Fair

KB to GR/CF: 12.00 ft

Serial #: 8352 Outside

Press @ Run Depth: 149.10 psig @ 4443.00 ft (KB)

Capacity: 8000.00 psig

Start Date: 2013.04.08

End Date:

2013.04.08

Last Calib.: 2013.04.08

Start Time: 01:21:39

End Time:

10:56:34

Time On Btm: 2013.04.08 @ 03:37:34

Time Off Btm: 2013.04.08 @ 08:14:34

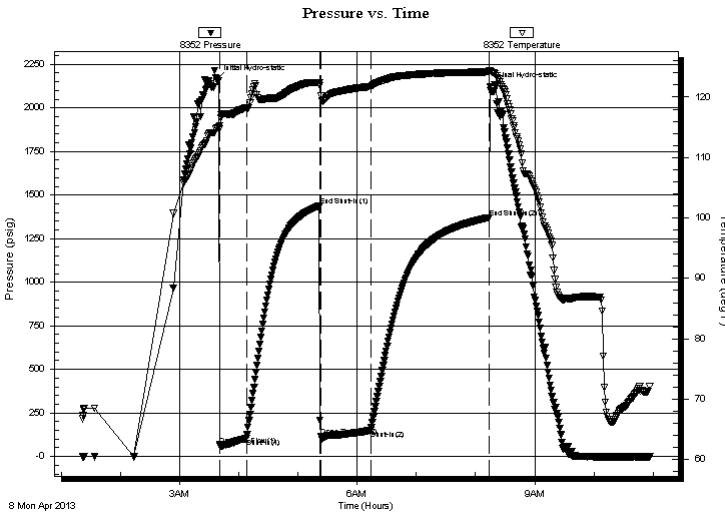
TEST COMMENT: IF: Strong blow . B.O.B. in 1 min. GTS in 30 mins.

IS: No blow .

FF: Strong blow . (see gas flow report)

FS: Weak blow . 1/2 - 2".

PRESSURE SUMMARY



Time (Min.)	Pressure (psig)	Temp (deg F)	Annotation
0	2160.52	114.90	Initial Hydro-static
3	64.93	115.30	Open To Flow (1)
30	105.43	118.26	Shut-In(1)
105	1439.02	122.45	End Shut-In(1)
106	113.34	120.18	Open To Flow (2)
156	149.10	121.72	Shut-In(2)
276	1371.04	124.17	End Shut-In(2)
277	2123.67	124.37	Final Hydro-static

Recovery

Length (ft)	Description	Volume (bbl)
122.00	GM&WCO 24%g 6%m 22%w 48%o	0.60
188.00	GM&WCO 56%g 6%m 14%w 24%o	2.08
105.00	GOCM 18%g 17%o 65%m	1.47

* Recovery from multiple tests

Gas Rates

	Choke (inches)	Pressure (psig)	Gas Rate (Mcf/d)
First Gas Rate	0.25	2.00	26.02
Last Gas Rate	0.25	1.00	24.43
Max. Gas Rate	0.25	2.00	26.02



**TRILOBITE
TESTING, INC.**

DRILL STEM TEST REPORT

FLUID SUMMARY

Woolsey Operating Co.

33-32s-12w Barber Ks

125 N. Market, Ste.1000
Wichita Ks.67202

Bartholow GU#2

Job Ticket: 50960

DST#: 2

ATTN: Scott Alberg

Test Start: 2013.04.08 @ 01:21:34

Mud and Cushion Information

Mud Type: Gel Chem

Cushion Type:

Oil API:

deg API

Mud Weight: 9.00 lb/gal

Cushion Length:

ft

Water Salinity:

60000 ppm

Viscosity: 49.00 sec/qt

Cushion Volume:

bbbl

Water Loss: 9.19 in³

Gas Cushion Type:

Resistivity: 0.00 ohm.m

Gas Cushion Pressure:

psig

Salinity: 6700.00 ppm

Filter Cake: 0.20 inches

Recovery Information

Recovery Table

Length ft	Description	Volume bbbl
122.00	GM&WCO 24%g 6%m 22%w 48%o	0.600
188.00	GM&WCO 56%g 6%m 14%w 24%o	2.081
105.00	GOCM 18%g 17%o 65%m	1.473

Total Length: 415.00 ft Total Volume: 4.154 bbl

Num Fluid Samples: 0

Num Gas Bombs: 1

Serial #: gp-2

Laboratory Name: Caraway

Laboratory Location: Liberal, KS

Recovery Comments: Rw .14 ohms @63deg



**TRILOBITE
TESTING, INC.**

DRILL STEM TEST REPORT

GAS RATES

Woolsey Operating Co.

33-32s-12w Barber Ks

125 N. Market, Ste.1000
Wichita Ks.67202

Bartholow GU#2

Job Ticket: 50960

DST#: 2

ATTN: Scott Alberg

Test Start: 2013.04.08 @ 01:21:34

Gas Rates Information

Temperature: 59 (deg F)
Relative Density: 0.65
Z Factor: 0.8

Gas Rates Table

Flow Period	Elapsed Time	Choke (inches)	Pressure (psig)	Gas Rate (Mcf/d)
2	10	0.25	2.00	26.02
2	10	0.25	2.00	26.02
2	10	0.25	2.00	26.02
2	20	0.25	1.00	24.43
2	30	0.25	1.00	24.43
2	40	0.25	1.00	24.43

Pressure vs. Time

