



**TRILOBITE
TESTING, INC.**

DRILL STEM TEST REPORT

Woolsey Operating Co.

33-32s-12w Barber Ks

125 N. Market, Ste.1000
Wichita Ks.67202

Bartholow GU#2

ATTN: Scott Alberg

Job Ticket: 50961

DST#: 3

Test Start: 2013.04.09 @ 07:41:30

GENERAL INFORMATION:

Formation: **Viola**

Deviated: No Whipstock: ft (KB)

Time Tool Opened: 09:30:00

Time Test Ended: 16:25:30

Test Type: Conventional Bottom Hole (Reset)

Tester: Gary Pevoteaux

Unit No: 56

Interval: 4715.00 ft (KB) To 4742.00 ft (KB) (TVD)

Total Depth: 4742.00 ft (KB) (TVD)

Hole Diameter: 7.88 inches Hole Condition: Fair

Reference Elevations: 1619.00 ft (KB)

1607.00 ft (CF)

KB to GR/CF: 12.00 ft

Serial #: 8352 Outside

Press @ Run Depth: 19.97 psig @ 4716.00 ft (KB)

Start Date: 2013.04.09

End Date:

2013.04.09

Start Time: 07:41:35

End Time:

16:25:30

Capacity: 8000.00 psig

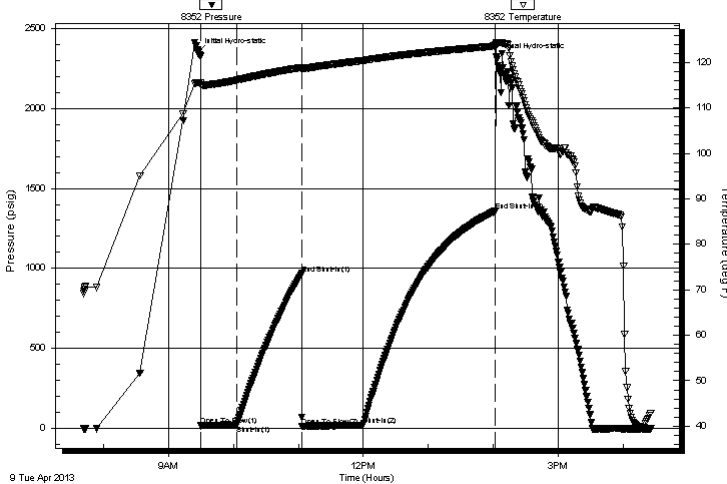
Last Calib.: 2013.04.09

Time On Btm: 2013.04.09 @ 09:27:15

Time Off Btm: 2013.04.09 @ 14:03:00

TEST COMMENT: IF: Strong blow . B.O.B. in 2 1/2 mins.
IS: No blow .
FF: Strong blow . B.O.B. in 2 - 3 secs.
FS: No blow .

Pressure vs. Time



PRESSURE SUMMARY

Time (Min.)	Pressure (psig)	Temp (deg F)	Annotation
0	2345.38	115.50	Initial Hydro-static
3	17.31	115.02	Open To Flow (1)
36	20.60	116.06	Shut-In(1)
96	967.57	118.89	End Shut-In(1)
97	12.92	118.59	Open To Flow (2)
153	19.97	120.39	Shut-In(2)
275	1358.23	123.58	End Shut-In(2)
276	2320.15	123.94	Final Hydro-static

Recovery

Length (ft)	Description	Volume (bbl)
40.00	GCM (trace of oil) 12%g 88%m	0.20
0.00	1700'GIP	0.00

Gas Rates

	Choke (inches)	Pressure (psig)	Gas Rate (Mcf/d)

* Recovery from multiple tests



**TRILOBITE
TESTING, INC.**

DRILL STEM TEST REPORT

FLUID SUMMARY

Woolsey Operating Co.

33-32s-12w Barber Ks

125 N. Market, Ste.1000
Wichita Ks.67202

Bartholow GU#2

Job Ticket: 50961

DST#: 3

ATTN: Scott Alberg

Test Start: 2013.04.09 @ 07:41:30

Mud and Cushion Information

Mud Type: Gel Chem

Cushion Type:

Oil API:

deg API

Mud Weight: 9.00 lb/gal

Cushion Length:

ft

Water Salinity:

4500 ppm

Viscosity: 52.00 sec/qt

Cushion Volume:

bbbl

Water Loss: 10.79 in³

Gas Cushion Type:

Resistivity: 0.00 ohm.m

Gas Cushion Pressure:

psig

Salinity: 4500.00 ppm

Filter Cake: 0.20 inches

Recovery Information

Recovery Table

Length ft	Description	Volume bbbl
40.00	GCM (trace of oil) 12%g 88%m	0.197
0.00	1700'GIP	0.000

Total Length: 40.00 ft Total Volume: 0.197 bbl

Num Fluid Samples: 0

Num Gas Bombs: 0

Serial #: none

Laboratory Name:

Laboratory Location:

Recovery Comments:

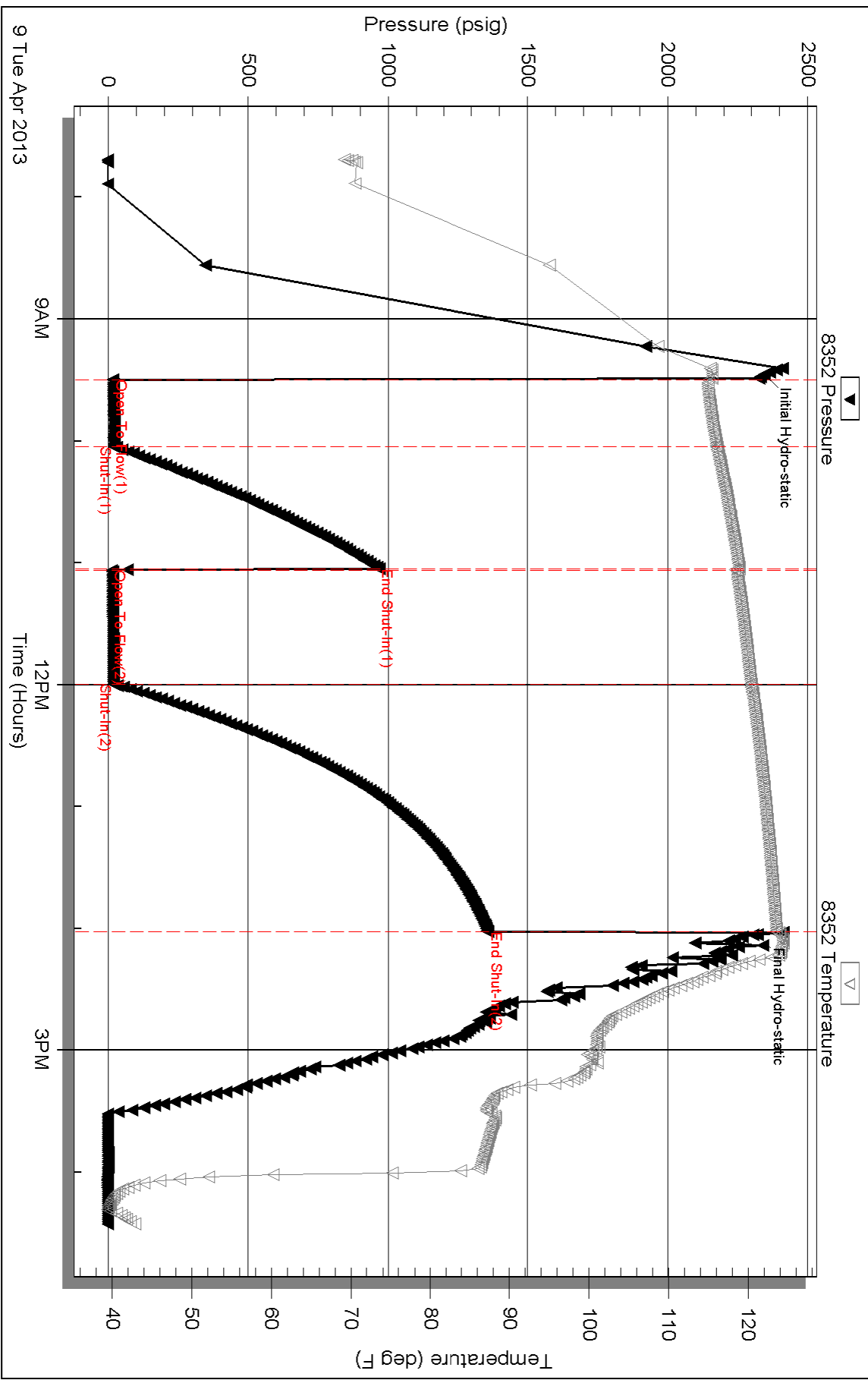
Serial #: 8352

Outside Woodsey Operating Co.

Bartholow GU#2

DST Test Number: 3

Pressure vs. Time



Triobite Testing, Inc

Ref. No: 50961

Printed: 2013.04.11 @ 13:08:45