



DRILL STEM TEST REPORT

Prepared For: **Shelby Resources L.L.C.**

446 Union Blvd Suite 208
Lakewood, Colorado 80228

ATTN: Jermey Schwartz

#6-24 Clark

24-17s-14w Barton

Start Date: 2013.02.06 @ 00:00:00

End Date: 2013.02.06 @ 00:00:00

Job Ticket #: 17076 DST #: 1

Superior Testers Enterprises LLC
PO Box 138 Great Bend KS 67530
1-800-792-6902

Printed: 2013.02.07 @ 01:29:59



DRILL STEM TEST REPORT

Shelby Resources L.L.C.
 446 Union Blvd Suite 208
 Lakewood, Colorado 80228
 ATTN: Jerney Schwartz

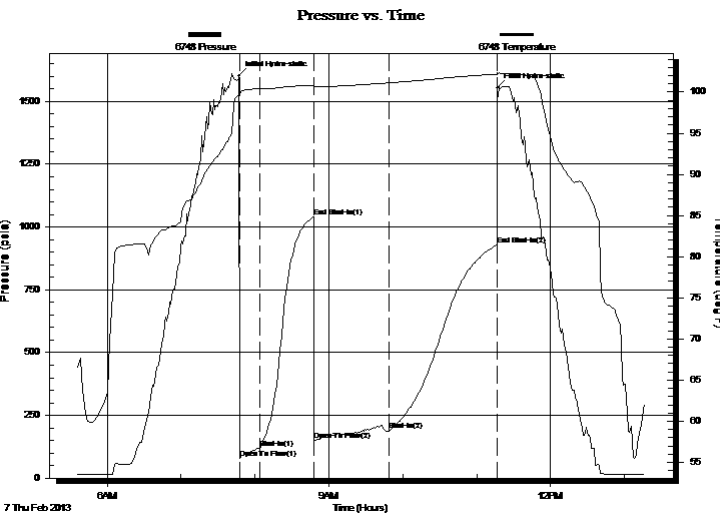
24-17s-14w Barton
#6-24 Clark
 Job Ticket: 17076 **DST#: 1**
 Test Start: 2013.02.06 @ 00:00:00

GENERAL INFORMATION:

Formation: **Kansas City**
 Deviated: No Whipstock: ft (KB)
 Time Tool Opened: 00:00:00
 Time Test Ended: 00:00:00
 Interval: **3232.00 ft (KB) To 3302.00 ft (KB) (TVD)**
 Total Depth: 3302.00 ft (KB) (TVD)
 Hole Diameter: 7.88 inches Hole Condition: Fair
 Test Type: Conventional Bottom Hole (Initial)
 Tester: Gene Budig
 Unit No: 3335
 Reference Elevations: 1986.00 ft (KB)
 1977.00 ft (CF)
 KB to GR/CF: 9.00 ft

Serial #: 6748 Outside
 Press @ Run Depth: 929.24 psia @ 3299.34 ft (KB) Capacity: 5000.00 psia
 Start Date: 2013.02.07 End Date: 2013.02.07 Last Calib.: 2013.02.07
 Start Time: 05:35:00 End Time: 13:17:00 Time On Btm: 2013.02.07 @ 07:47:00
 Time Off Btm: 2013.02.07 @ 11:17:00

TEST COMMENT: 1st Opening 15 Minutes Weak building blow built to 5 inches into the water
 1st Shut-In 45 Minutes-No blow back
 2nd Opening 60 Minutes-Weak building blow built to 11 inches into the water
 2nd Shut-In 90 Minutes-No blow back



PRESSURE SUMMARY

Time (Min.)	Pressure (psia)	Temp (deg F)	Annotation
0	1601.22	99.75	Initial Hydro-static
1	80.53	99.55	Open To Flow (1)
17	119.89	100.37	Shut-In(1)
61	1040.26	100.85	End Shut-In(1)
61	152.10	100.57	Open To Flow (2)
122	189.67	101.12	Shut-In(2)
210	929.24	102.19	End Shut-In(2)
210	1554.10	102.39	Final Hydro-static

Recovery

Length (ft)	Description	Volume (bbl)
20.00	Mud	0.10
60.00	Drilling mud with a trace of oil	0.30
0.00	1%Oil 99%Mud	0.00
60.00	Slightly oil cut mud	0.30
0.00	15%Oil 85%Mud	0.00
60.00	Slightly oil and gas cut mud	0.30

Gas Rates

Choke (inches)	Pressure (psia)	Gas Rate (Mcf/d)



DRILL STEM TEST REPORT

TOOL DIAGRAM

Shelby Resources L.L.C.
 446 Union Blvd Suite 208
 Lakewood, Colorado 80228
 ATTN: Jerney Schwartz

24-17s-14w Barton
#6-24 Clark
 Job Ticket: 17076 **DST#: 1**
 Test Start: 2013.02.06 @ 00:00:00

Tool Information

Drill Pipe:	Length: 3024.00 ft	Diameter: 3.80 inches	Volume: 42.42 bbl	Tool Weight: 2000.00 lb
Heavy Wt. Pipe:	Length: 0.00 ft	Diameter: 2.86 inches	Volume: 0.00 bbl	Weight set on Packer: 20000.00 lb
Drill Collar:	Length: 210.00 ft	Diameter: 2.25 inches	Volume: 1.03 bbl	Weight to Pull Loose: 82000.00 lb
			<u>Total Volume: 43.45 bbl</u>	Tool Chased 8.00 ft
Drill Pipe Above KB:	31.00 ft			String Weight: Initial 67000.00 lb
Depth to Top Packer:	3232.00 ft			Final 67000.00 lb
Depth to Bottom Packer:	ft			
Interval between Packers:	70.34 ft			
Tool Length:	99.34 ft			
Number of Packers:	2	Diameter: 6.75 inches		

Tool Comments:

Tool Description	Length (ft)	Serial No.	Position	Depth (ft)	Accum. Lengths
Change Over Sub	1.00			3204.00	
Shut-In Tool	5.00			3209.00	
Hydroic Tool	5.00			3214.00	
Jars	6.00			3220.00	
Safety Joint	2.00			3222.00	
Packer	5.00			3227.00	29.00 Bottom Of Top Packer
Packer	5.00			3232.00	
Perforations	5.00			3237.00	
Change Over Sub	0.75			3237.75	
Drill Pipe	31.84			3269.59	
Change Over Sub	0.75			3270.34	
Perforations	27.00			3297.34	
Recorder	1.00	6663	Inside	3298.34	
Recorder	1.00	6748	Outside	3299.34	
Bullnose	3.00			3302.34	70.34 Bottom Packers & Anchor

Total Tool Length: 99.34



DRILL STEM TEST REPORT

FLUID SUMMARY

Shelby Resources L.L.C.
 446 Union Blvd Suite 208
 Lakewood, Colorado 80228
 ATTN: Jerney Schwartz

24-17s-14w Barton
#6-24 Clark
 Job Ticket: 17076 **DST#: 1**
 Test Start: 2013.02.06 @ 00:00:00

Mud and Cushion Information

Mud Type: Gel Chem	Cushion Type:	Oil API:	deg API
Mud Weight: 9.00 lb/gal	Cushion Length: ft	Water Salinity:	ppm
Viscosity: 49.00 sec/qt	Cushion Volume: bbl		
Water Loss: 7.20 in ³	Gas Cushion Type:		
Resistivity: ohm.m	Gas Cushion Pressure: psia		
Salinity: 5200.00 ppm			
Filter Cake: 1.00 inches			

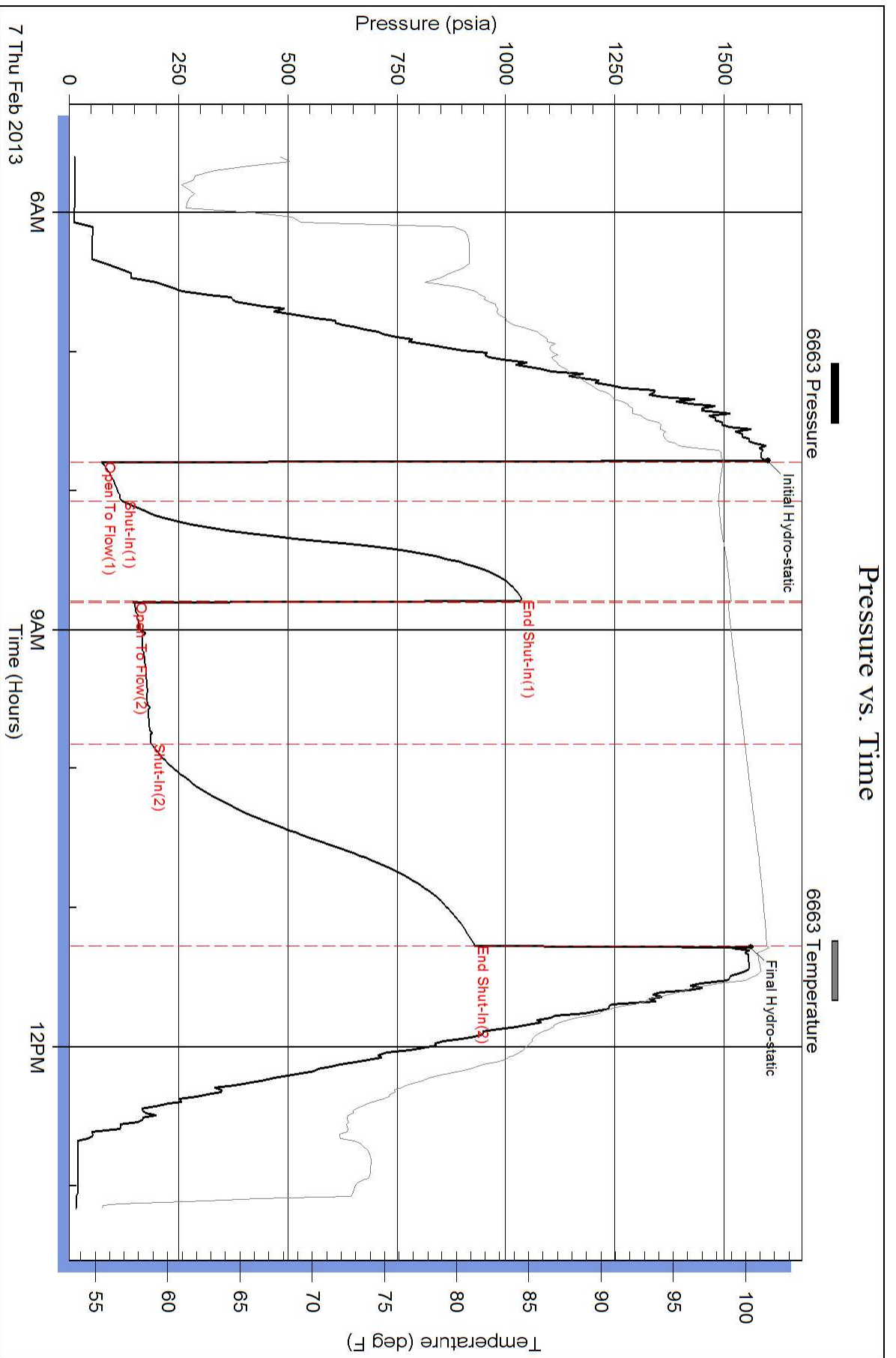
Recovery Information

Recovery Table

Length ft	Description	Volume bbl
20.00	Mud	0.098
60.00	Drilling mud with a trace of oil	0.295
0.00	1%Oil 99%Mud	0.000
60.00	Slightly oil cut mud	0.295
0.00	15%Oil 85%Mud	0.000
60.00	Slightly oil and gas cut mud	0.295
0.00	10%Gas 20%Oil 70%Mud	0.000
60.00	slightly oil and gas cut mud	0.751
0.00	15%Gas 20%Oil 65%Mud	0.000

Total Length: 260.00 ft Total Volume: 1.734 bbl
 Num Fluid Samples: 0 Num Gas Bombs: 0 Serial #:
 Laboratory Name: Laboratory Location:
 Recovery Comments:

Pressure vs. Time



Pressure vs. Time

