



DRILL STEM TEST REPORT

Prepared For: **Shelby Resources L.L.C.**

446 Union Blvd Suite 208
Lakewood, Colorado 80228

ATTN: Jermey Schwartz

#6-24 Clark

24-17s-14w Barton

Start Date: 2013.02.07 @ 01:30:00

End Date: 2013.02.07 @ 07:51:30

Job Ticket #: 16966 DST #: 2

Superior Testers Enterprises LLC
PO Box 138 Great Bend KS 67530
1-800-792-6902

Printed: 2013.02.07 @ 19:26:36



DRILL STEM TEST REPORT

TOOL DIAGRAM

Shelby Resources L.L.C.
 446 Union Blvd Suite 208
 Lakewood, Colorado 80228
 ATTN: Jerney Schwartz

24-17s-14w Barton
#6-24 Clark
 Job Ticket: 16966 **DST#: 2**
 Test Start: 2013.02.07 @ 01:30:00

Tool Information

Drill Pipe:	Length: 3106.00 ft	Diameter: 3.80 inches	Volume: 43.57 bbl	Tool Weight:	2000.00 lb
Heavy Wt. Pipe:	Length: 0.00 ft	Diameter: 0.00 inches	Volume: 0.00 bbl	Weight set on Packer:	20000.00 lb
Drill Collar:	Length: 249.00 ft	Diameter: 2.25 inches	Volume: 1.22 bbl	Weight to Pull Loose:	72000.00 lb
			<u>Total Volume: 44.79 bbl</u>	Tool Chased	5.00 ft
Drill Pipe Above KB:	25.00 ft			String Weight: Initial	68000.00 lb
Depth to Top Packer:	3359.00 ft			Final	69000.00 lb
Depth to Bottom Packer:	ft				
Interval between Packers:	17.00 ft				
Tool Length:	46.00 ft				
Number of Packers:	2	Diameter: 6.75 inches			

Tool Comments: slide tool to bottom had a packer failure filled hole reset packers packers held

Tool Description	Length (ft)	Serial No.	Position	Depth (ft)	Accum. Lengths
Change Over Sub	1.00			3331.00	
Shut-In Tool	5.00			3336.00	
Hydroic Tool	5.00			3341.00	
Jars	6.00			3347.00	
Safety Joint	2.00			3349.00	
Packer	5.00			3354.00	29.00 Bottom Of Top Packer
Packer	5.00			3359.00	
Perforations	12.00			3371.00	
Recorder	1.00	6663	Inside	3372.00	
Recorder	1.00	6748	Outside	3373.00	
Bullnose	3.00			3376.00	17.00 Bottom Packers & Anchor

Total Tool Length: 46.00



DRILL STEM TEST REPORT

FLUID SUMMARY

Shelby Resources L.L.C.
 446 Union Blvd Suite 208
 Lakewood, Colorado 80228
 ATTN: Jerney Schwartz

24-17s-14w Barton
#6-24 Clark
 Job Ticket: 16966 **DST#: 2**
 Test Start: 2013.02.07 @ 01:30:00

Mud and Cushion Information

Mud Type: Gel Chem	Cushion Type:	Oil API:	deg API
Mud Weight: 9.00 lb/gal	Cushion Length: ft	Water Salinity:	ppm
Viscosity: 47.00 sec/qt	Cushion Volume: bbl		
Water Loss: 7.20 in ³	Gas Cushion Type:		
Resistivity: ohm.m	Gas Cushion Pressure: psia		
Salinity: 5900.00 ppm			
Filter Cake: 1.00 inches			

Recovery Information

Recovery Table

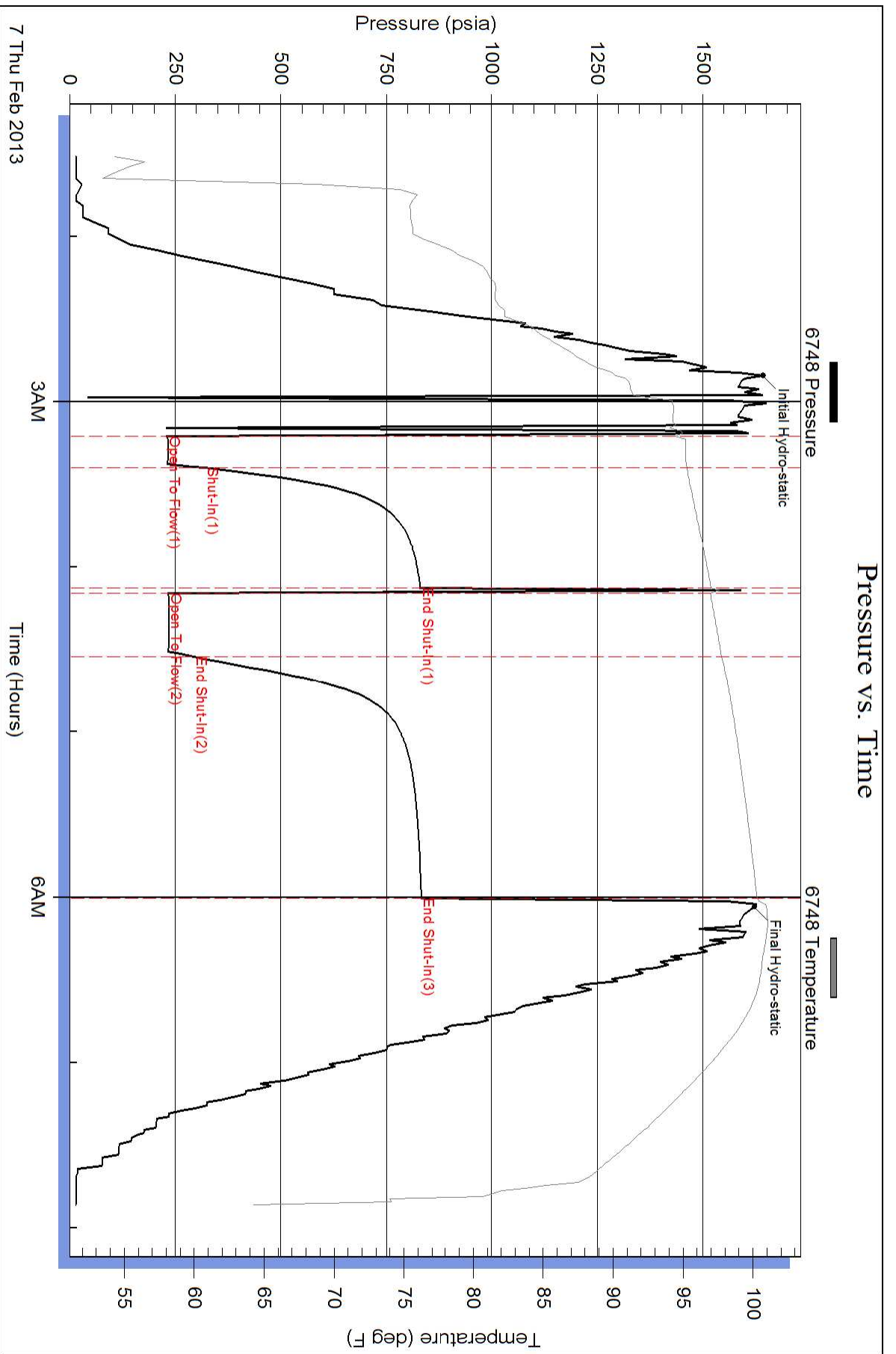
Length ft	Description	Volume bbl
60.00	mud 100%	0.295
180.00	slight show of oil and mud	0.885
0.00	1/2% oil 95 1/2% mud	0.000
60.00	slight show of oil cut mud	0.760
0.00	1% oil 99% mud	0.000

Total Length: 300.00 ft Total Volume: 1.940 bbl

Num Fluid Samples: 0 Num Gas Bombs: 0 Serial #:

Laboratory Name: Laboratory Location:

Recovery Comments: slid tool 5 feet to bottom had a packer failure refilled hole reset the tool loot held



Pressure vs. Time

