



## DRILL STEM TEST REPORT

Prepared For: **Shelby Resources L.L.C.**

446 Union Blvd Suite 208  
Lakewood, Colorado 80228

ATTN: Jermey Schwartz

**#6-24 Clark**

**24-17s-14w Barton**

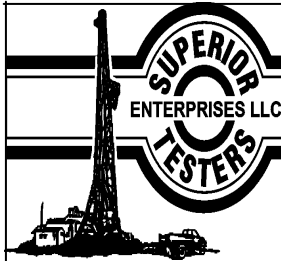
Start Date: 2013.02.09 @ 00:00:00

End Date: 2013.02.09 @ 00:00:00

Job Ticket #: 17077                      DST #: 4

Superior Testers Enterprises LLC  
PO Box 138 Great Bend KS 67530  
1-800-792-6902

Printed: 2013.02.09 @ 08:29:22



# DRILL STEM TEST REPORT

Shelby Resources L.L.C.  
 446 Union Blvd Suite 208  
 Lakewood, Colorado 80228  
 ATTN: Jerney Schwartz

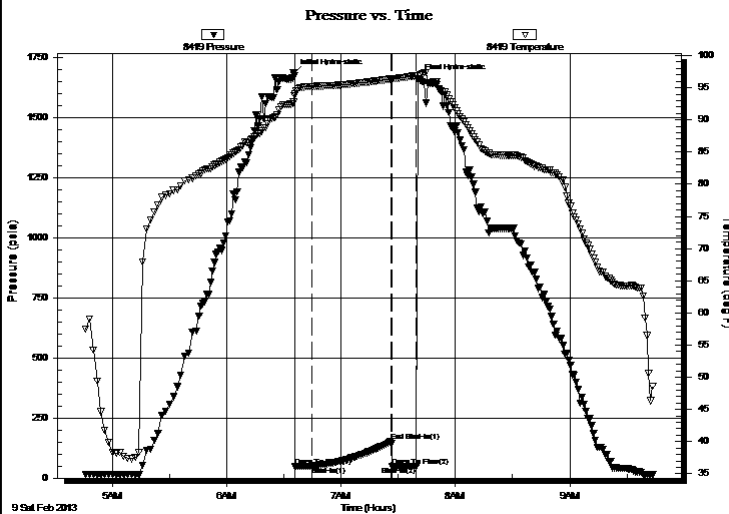
**24-17s-14w Barton**  
**#6-24 Clark**  
 Job Ticket: 17077 **DST#: 4**  
 Test Start: 2013.02.09 @ 00:00:00

## GENERAL INFORMATION:

Formation: **Arbuckle**  
 Deviated: No Whipstock: ft (KB)  
 Test Type: Conventional Bottom Hole (Initial)  
 Time Tool Opened: 00:00:00 Tester: Gene Budig  
 Time Test Ended: 00:00:00 Unit No: 3335  
 Interval: **3435.00 ft (KB) To 3478.00 ft (KB) (TVD)** Reference Elevations: 1986.00 ft (KB)  
 Total Depth: 3478.00 ft (KB) (TVD) 1977.00 ft (CF)  
 Hole Diameter: 7.88 inches Hole Condition: Fair KB to GR/CF: 9.00 ft

**Serial #: 8419 Outside**  
 Press @ Run Depth: 152.32 psia @ 3475.00 ft (KB) Capacity: 5000.00 psia  
 Start Date: 2013.02.09 End Date: 2013.02.09 Last Calib.: 2013.02.09  
 Start Time: 04:45:00 End Time: 09:44:00 Time On Btm: 2013.02.09 @ 06:35:00  
 Time Off Btm: 2013.02.09 @ 07:40:30

**TEST COMMENT:** 1st Opening 5 Minutes-Very weak intermittent surface blow for 5 minutes and died  
 1st Shut-In 45 Minutes-No blow back  
 2nd Opening 10 Minutes-Very weak intermittent surface blow for 6 minutes and died  
 2nd Shut-In - There was no 2nd shut-in taken started out of the hole after being open for 10 minutes on the 2nd flow



## PRESSURE SUMMARY

Time (Min.)	Pressure (psia)	Temp (deg F)	Annotation
0	1683.60	92.73	Initial Hydro-static
1	47.45	94.10	Open To Flow (1)
10	48.60	95.20	Shut-In(1)
51	152.32	96.34	End Shut-In(1)
52	49.41	96.36	Open To Flow (2)
65	48.45	96.87	Shut-In(2)
66	1662.08	96.20	Final Hydro-static

## Recovery

Length (ft)	Description	Volume (bbl)
15.00	Slightly oil cut mud 2%Oil 98%Mud	0.07

## Gas Rates

Choke (inches)	Pressure (psia)	Gas Rate (Mcf/d)





# DRILL STEM TEST REPORT

**TOOL DIAGRAM**

Shelby Resources L.L.C.  
 446 Union Blvd Suite 208  
 Lakewood, Colorado 80228  
 ATTN: Jerney Schwartz

**24-17s-14w Barton**  
**#6-24 Clark**  
 Job Ticket: 17077      **DST#: 4**  
 Test Start: 2013.02.09 @ 00:00:00

**Tool Information**

Drill Pipe:	Length: 3217.00 ft	Diameter: 3.80 inches	Volume: 45.13 bbl	Tool Weight: 2000.00 lb
Heavy Wt. Pipe:	Length: ft	Diameter: 2.76 inches	Volume: - bbl	Weight set on Packer: 20000.00 lb
Drill Collar:	Length: 210.00 ft	Diameter: 2.25 inches	Volume: 1.03 bbl	Weight to Pull Loose: 76000.00 lb
			<u>Total Volume: - bbl</u>	Tool Chased 0.00 ft
Drill Pipe Above KB:	21.00 ft			String Weight: Initial 70000.00 lb
Depth to Top Packer:	3435.00 ft			Final 70000.00 lb
Depth to Bottom Packer:	ft			
Interval between Packers:	43.00 ft			
Tool Length:	72.00 ft			
Number of Packers:	2	Diameter: 6.75 inches		

Tool Comments:

Tool Description	Length (ft)	Serial No.	Position	Depth (ft)	Accum. Lengths
Change Over Sub	1.00			3407.00	
Shut-In Tool	5.00			3412.00	
Hydroic Tool	5.00			3417.00	
Jars	6.00			3423.00	
Safety Joint	2.00			3425.00	
Packer	5.00			3430.00	29.00      Bottom Of Top Packer
Packer	5.00			3435.00	
Perforations	38.00			3473.00	
Recorder	1.00	6748	Inside	3474.00	
Recorder	1.00	8419	Outside	3475.00	
Bullnose	3.00			3478.00	43.00      Bottom Packers & Anchor

**Total Tool Length: 72.00**



# DRILL STEM TEST REPORT

## FLUID SUMMARY

Shelby Resources L.L.C.  
 446 Union Blvd Suite 208  
 Lakewood, Colorado 80228  
 ATTN: Jerney Schwartz

**24-17s-14w Barton**  
**#6-24 Clark**  
 Job Ticket: 17077      **DST#: 4**  
 Test Start: 2013.02.09 @ 00:00:00

### Mud and Cushion Information

Mud Type: Gel Chem	Cushion Type:	Oil API:	deg API
Mud Weight: 9.00 lb/gal	Cushion Length: ft	Water Salinity:	ppm
Viscosity: 57.00 sec/qt	Cushion Volume: bbl		
Water Loss: 6.80 in <sup>3</sup>	Gas Cushion Type:		
Resistivity: ohm.m	Gas Cushion Pressure: psia		
Salinity: 6200.00 ppm			
Filter Cake: 1.00 inches			

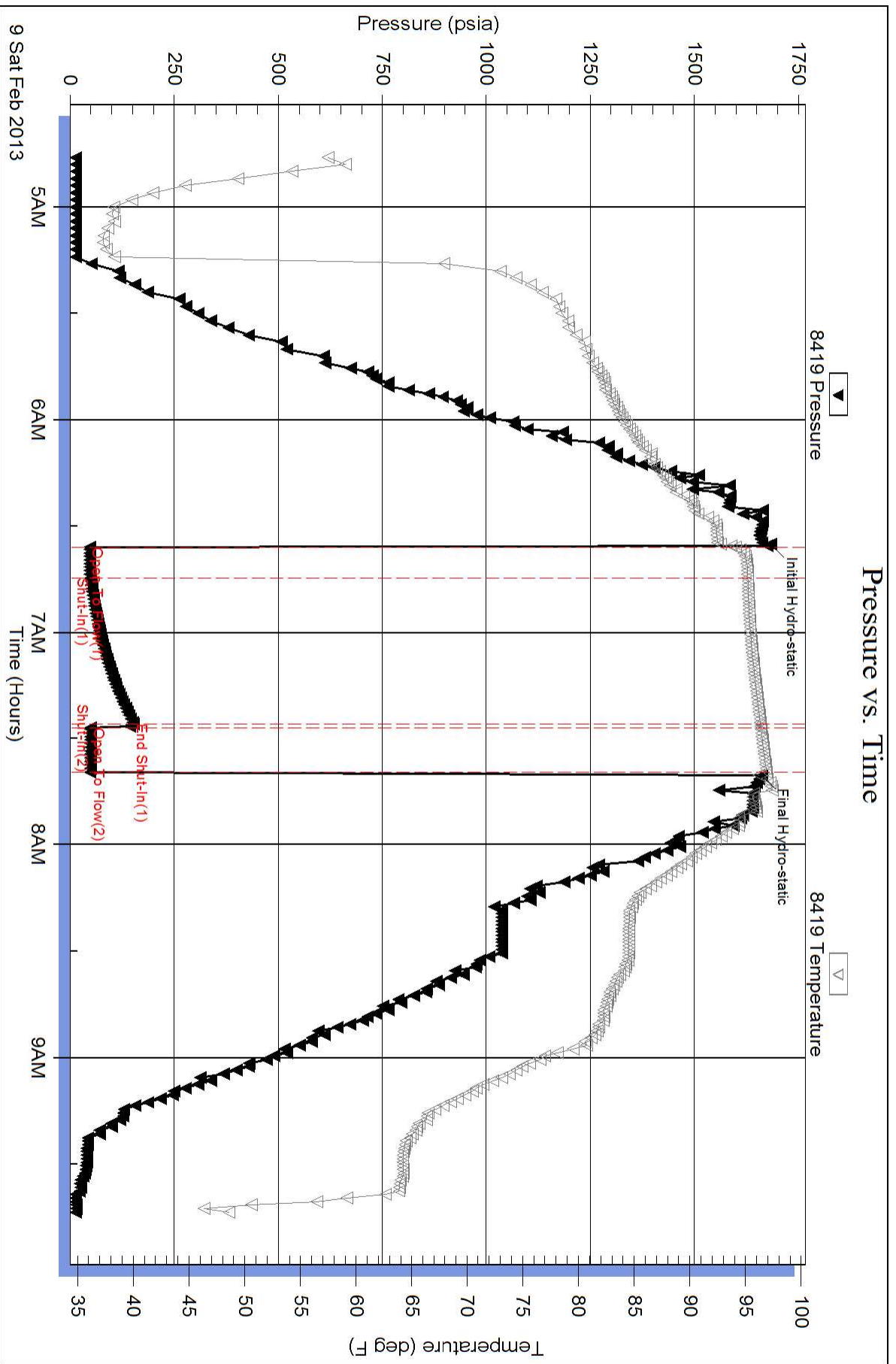
### Recovery Information

Recovery Table

Length ft	Description	Volume bbl
15.00	Slightly oil cut mud 2%Oil 98%Mud	0.074

Total Length: 15.00 ft      Total Volume: 0.074 bbl  
 Num Fluid Samples: 0      Num Gas Bombs: 0      Serial #:  
 Laboratory Name:      Laboratory Location:  
 Recovery Comments:

# Pressure vs. Time



### Pressure vs. Time

