

## DRILL STEM TEST REPORT

Prepared For: **Mike Kelso Oil, Inc.**

PO Box 467  
1125 S. Main  
Chase Kansas 67524-0467

ATTN: Mike Kelso

### **Warner #2**

### **15/20s/10w/Rice**

Start Date: 2013.06.03 @ 01:35:00

End Date: 2013.06.03 @ 07:47:30

Job Ticket #: 17591                      DST #: 3

Superior Testers Enterprises LLC  
PO Box 138 Great Bend KS 67530  
1-800-792-6902

Printed: 2013.06.03 @ 08:04:56



# DRILL STEM TEST REPORT

Mike Kelso Oil, Inc.  
 PO Box 467  
 1125 S. Main  
 Chase Kansas 67524-0467  
 ATTN: Mike Kelso

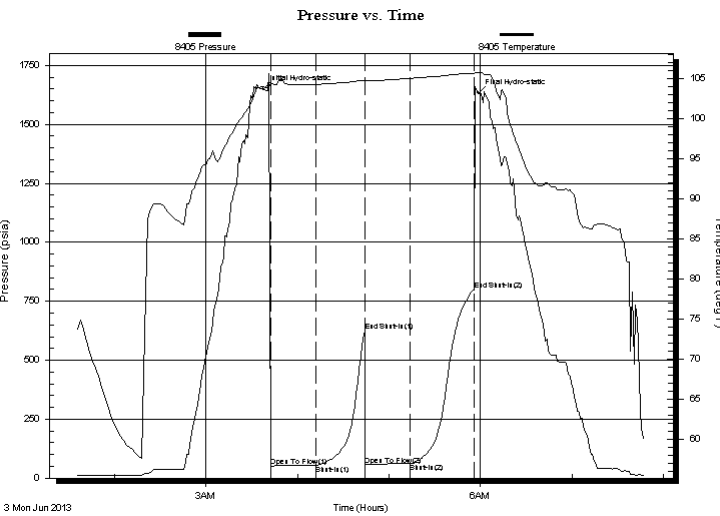
**15/20s/10w/Rice**  
**Warner #2**  
 Job Ticket: 17591      **DST#: 3**  
 Test Start: 2013.06.03 @ 01:35:00

## GENERAL INFORMATION:

Formation: **Congl./ Simpson Sand**  
 Deviated: No Whipstock: ft (KB)  
 Time Tool Opened: 03:42:30  
 Time Test Ended: 07:47:30  
 Interval: **3338.00 ft (KB) To 3390.00 ft (KB) (TVD)**  
 Total Depth: 3390.00 ft (KB) (TVD)  
 Hole Diameter: 7.88 inches Hole Condition: Poor  
 Test Type: Conventional Bottom Hole (Initial)  
 Tester: Shane Konzem  
 Unit No: 3330/40/Great Bend  
 Reference Elevations: 1836.00 ft (KB)  
 1824.00 ft (CF)  
 KB to GR/CF: 12.00 ft

**Serial #: 8405      Inside**  
 Press @ RunDepth: 62.53 psia @ 3385.98 ft (KB)      Capacity: 5000.00 psia  
 Start Date: 2013.06.03      End Date: 2013.06.03      Last Calib.: 2013.06.03  
 Start Time: 01:35:00      End Time: 07:47:30      Time On Btm: 2013.06.03 @ 03:37:30  
 Time Off Btm: 2013.06.03 @ 05:58:30

**TEST COMMENT:** 1st Open/ 30 Minutes. Fair blow built to 6 inches in 5 gallon bucket.  
 1st ShutIn/ 30 Minutes. No blow back.  
 2nd Open/ 30 Minutes. Fair blow built to 3 inches in 5 gallon bucket.  
 2nd Shut In/ 30 Minutes. No blow back.



## PRESSURE SUMMARY

Time (Min.)	Pressure (psia)	Temp (deg F)	Annotation
0	1647.63	103.89	Initial Hydro-static
5	50.70	104.30	Open To Flow (1)
35	55.63	104.23	Shut-In(1)
67	622.40	104.76	End Shut-In(1)
67	56.32	104.66	Open To Flow (2)
97	62.53	104.99	Shut-In(2)
138	799.20	105.62	End Shut-In(2)
141	1631.46	105.71	Final Hydro-static

## Recovery

Length (ft)	Description	Volume (bbl)
0.00	120 feet gas	0.00
10.00	clean oil	0.14
30.00	40% oil, 60% mud	0.42

## Gas Rates

	Choke (inches)	Pressure (psia)	Gas Rate (Mcf/d)



# DRILL STEM TEST REPORT

Mike Kelso Oil, Inc.  
 PO Box 467  
 1125 S. Main  
 Chase Kansas 67524-0467  
 ATTN: Mike Kelso

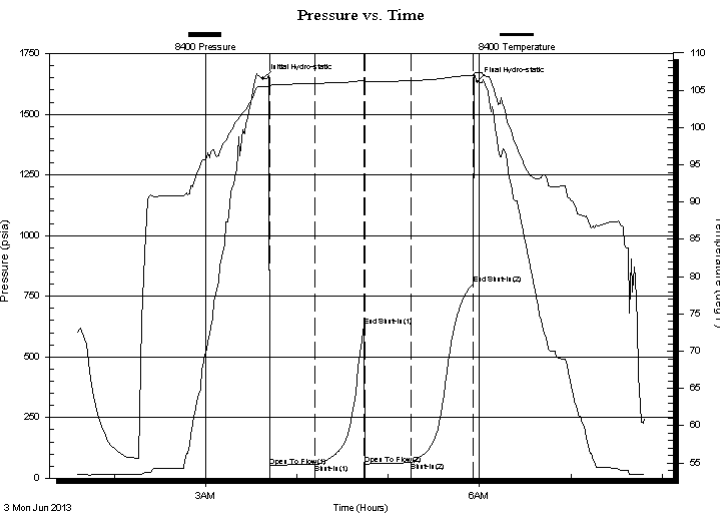
**15/20s/10w/Rice**  
**Warner #2**  
 Job Ticket: 17591      **DST#: 3**  
 Test Start: 2013.06.03 @ 01:35:00

## GENERAL INFORMATION:

Formation: **Congl./ Simpson Sand**  
 Deviated: No Whipstock: ft (KB)  
 Time Tool Opened: 03:42:30  
 Time Test Ended: 07:47:30  
 Test Type: Conventional Bottom Hole (Initial)  
 Tester: Shane Konzem  
 Unit No: 3330/40/Great Bend  
 Interval: **3338.00 ft (KB) To 3390.00 ft (KB) (TVD)**  
 Reference Elevations: 1836.00 ft (KB)  
 Total Depth: 3390.00 ft (KB) (TVD) 1824.00 ft (CF)  
 Hole Diameter: 7.88 inches Hole Condition: Poor KB to GR/CF: 12.00 ft

**Serial #: 8400      Outside**  
 Press @ RunDepth: 800.69 psia @ 3386.98 ft (KB) Capacity: 5000.00 psia  
 Start Date: 2013.06.03 End Date: 2013.06.03 Last Calib.: 2013.06.03  
 Start Time: 01:35:00 End Time: 07:49:00 Time On Btm: 2013.06.03 @ 03:38:00  
 Time Off Btm: 2013.06.03 @ 05:58:30

**TEST COMMENT:** 1st Open/ 30 Minutes. Fair blow built to 6 inches in 5 gallon bucket.  
 1st ShutIn/ 30 Minutes. No blow back.  
 2nd Open/ 30 Minutes. Fair blow built to 3 inches in 5 gallon bucket.  
 2nd Shut In/ 30 Minutes. No blow back.



## PRESSURE SUMMARY

Time (Min.)	Pressure (psia)	Temp (deg F)	Annotation
0	1647.25	105.50	Initial Hydro-static
5	50.81	105.52	Open To Flow (1)
34	56.68	105.93	Shut-In(1)
66	628.05	106.35	End Shut-In(1)
67	56.15	106.13	Open To Flow (2)
97	65.16	106.29	Shut-In(2)
138	800.69	107.00	End Shut-In(2)
141	1632.98	107.34	Final Hydro-static

## Recovery

Length (ft)	Description	Volume (bbl)
0.00	120 feet gas	0.00
10.00	clean oil	0.14
30.00	40% oil, 60% mud	0.42

## Gas Rates

	Choke (inches)	Pressure (psia)	Gas Rate (Mcf/d)



# DRILL STEM TEST REPORT

**TOOL DIAGRAM**

Mike Kelso Oil, Inc.  
 PO Box 467  
 1125 S. Main  
 Chase Kansas 67524-0467  
 ATTN: Mike Kelso

**15/20s/10w/Rice**  
**Warner #2**  
 Job Ticket: 17591      **DST#: 3**  
 Test Start: 2013.06.03 @ 01:35:00

**Tool Information**

Drill Pipe:	Length: 3340.00 ft	Diameter: 3.80 inches	Volume: 46.85 bbl	Tool Weight:	2000.00 lb
Heavy Wt. Pipe:	Length: 0.00 ft	Diameter: 0.00 inches	Volume: 0.00 bbl	Weight set on Packer:	20000.00 lb
Drill Collar:	Length: 0.00 ft	Diameter: 0.00 inches	Volume: 0.00 bbl	Weight to Pull Loose:	48000.00 lb
			<u>Total Volume: 46.85 bbl</u>	Tool Chased	1.00 ft
Drill Pipe Above KB:	22.00 ft			String Weight: Initial	42000.00 lb
Depth to Top Packer:	3338.00 ft			Final	42000.00 lb
Depth to Bottom Packer:	ft				
Interval between Packers:	51.98 ft				
Tool Length:	71.98 ft				
Number of Packers:	2	Diameter:	6.75 inches		
Tool Comments:					

Tool Description	Length (ft)	Serial No.	Position	Depth (ft)	Accum. Lengths
SHut-InTool	5.00		Inside	3323.00	
Hydraulic Tool	5.00			3328.00	
Packer	5.00			3333.00	20.00      Bottom Of Top Packer
Packer	5.00			3338.00	
Anchor	5.00			3343.00	
Change Over Sub	0.75			3343.75	
Drill Pipe	31.48		Outside	3375.23	
Change Over Sub	0.75		Outside	3375.98	
Anchor	9.00			3384.98	
Recorder	1.00	8405	Inside	3385.98	
Recorder	1.00	8400	Outside	3386.98	
Bullnose	3.00			3389.98	51.98      Bottom Packers & Anchor

**Total Tool Length: 71.98**



# DRILL STEM TEST REPORT

## FLUID SUMMARY

Mike Kelso Oil, Inc.

**15/20s/10w/Rice**

PO Box 467  
 1125 S. Main  
 Chase Kansas 67524-0467  
 ATTN: Mike Kelso

**Warner #2**

Job Ticket: 17591

**DST#: 3**

Test Start: 2013.06.03 @ 01:35:00

### Mud and Cushion Information

Mud Type: Gel Chem  
 Mud Weight: 9.00 lb/gal  
 Viscosity: 50.00 sec/qt  
 Water Loss: in<sup>3</sup>  
 Resistivity: ohm.m  
 Salinity: 6000.00 ppm  
 Filter Cake: 1.00 inches

Cushion Type:  
 Cushion Length: ft  
 Cushion Volume: bbl  
 Gas Cushion Type:  
 Gas Cushion Pressure: psia

Oil API: deg API  
 Water Salinity: ppm

### Recovery Information

Recovery Table

Length ft	Description	Volume bbl
0.00	120 feet gas	0.000
10.00	clean oil	0.140
30.00	40% oil, 60% mud	0.421

Total Length: 40.00 ft      Total Volume: 0.561 bbl

Num Fluid Samples: 0

Num Gas Bombs: 0

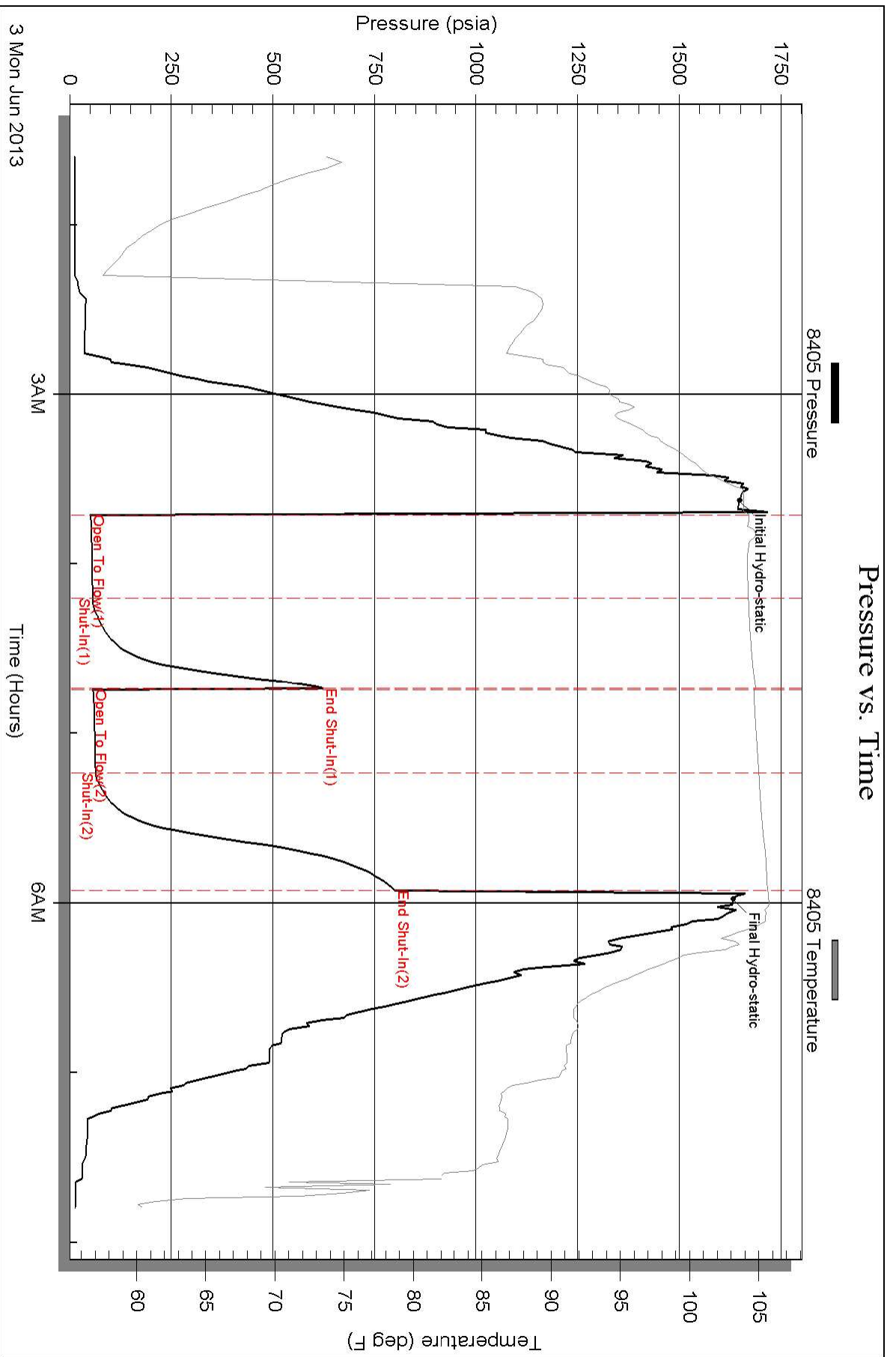
Serial #:

Laboratory Name:

Laboratory Location:

Recovery Comments:

### Pressure vs. Time



### Pressure vs. Time

