



TRILOBITE TESTING, INC.

DRILL STEM TEST REPORT

Pauley Oil

15-17s-8w Ellsworth, KS

314 5th. St.
Cliffin, KS 67525

S. Rolfs #4

Job Ticket: 50867

DST#: 1

ATTN: Wyatt Urban

Test Start: 1999.05.20 @ 11:44:12

GENERAL INFORMATION:

Formation: **Arbuckle**

Deviated: No Whipstock: ft (KB)

Time Tool Opened: 00:00:00

Time Test Ended: 15:08:12

Interval: 3181.00 ft (KB) To 3269.00 ft (KB) (TVD)

Total Depth: 3269.00 ft (KB) (TVD)

Hole Diameter: 7.88 inches Hole Condition: Fair

Test Type: Conventional Bottom Hole (Initial)

Tester: Ryan Reynolds

Unit No: 48

Reference Elevations: 1770.00 ft (KB)

1757.00 ft (CF)

KB to GR/CF: 13.00 ft

Serial #: 0

Press@RunDepth: kPag @ ft (KB)

Start Date: 2067.06.07 End Date: 2067.06.07

Start Time: 14:56:12 End Time: 14:56:12

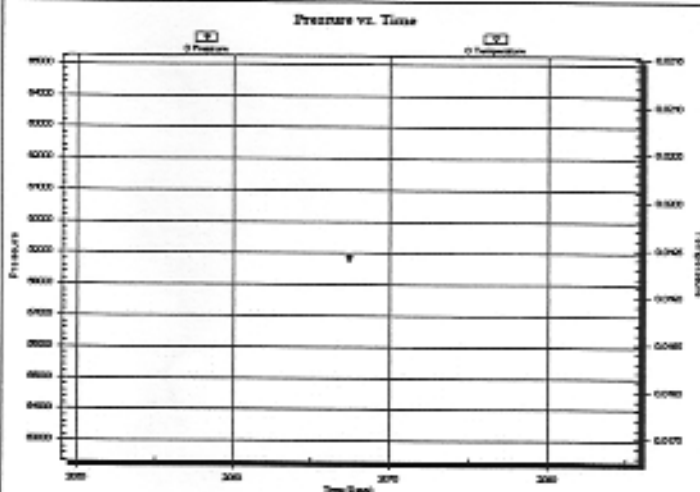
Capacity: 420000.00 kPag

Last Calib.: 2013.03.27

Time On Btm:

Time Off Btm:

TEST COMMENT: F: Weak blow . 1/2" - Dead @ 21min.
IS: No blow
FF: No blow
FS: No blow (Recorders did not record. Error code 0x40)



PRESSURE SUMMARY

Time (Min.)	Pressure (kPag)	Temp (deg C)	Annotation

Recovery

Length (ft)	Description	Volume (bbl)
5.00	Drig mud 100% mud	0.07

Gas Rates

Choke (inches)	Pressure (kPag)	Gas Rate (Mcf/d)