



**TRILOBITE TESTING, INC.**

# DRILL STEM TEST REPORT

Berexco, LLC.

**9-1S-36W Rawlins, KS**

2020 N Bramblewood  
Wichita, KS 67206

**Moser #3-9**

Job Ticket: 52133

**DST#: 2**

ATTN: Bryan Bynog

Test Start: 2013.06.30 @ 15:50:00

## GENERAL INFORMATION:

Formation: **LKC "A"**

Deviated: No Whipstock: ft (KB)

Time Tool Opened: 18:50:30

Time Test Ended: 04:04:00

Test Type: Conventional Bottom Hole (Initial)

Tester: Kevin Mack

Unit No: 66

**Interval: 3955.00 ft (KB) To 4065.00 ft (KB) (TVD)**

Reference Elevations: 3102.00 ft (KB)

Total Depth: 4065.00 ft (KB) (TVD)

3092.00 ft (CF)

Hole Diameter: 7.88 inches Hole Condition: Good

KB to GR/CF: 10.00 ft

**Serial #: 8520 Outside**

Press @ Run Depth: 27.26 psig @ 3956.00 ft (KB)

Capacity: 8000.00 psig

Start Date: 2013.06.30

End Date: 2013.07.01

Last Calib.: 2013.07.01

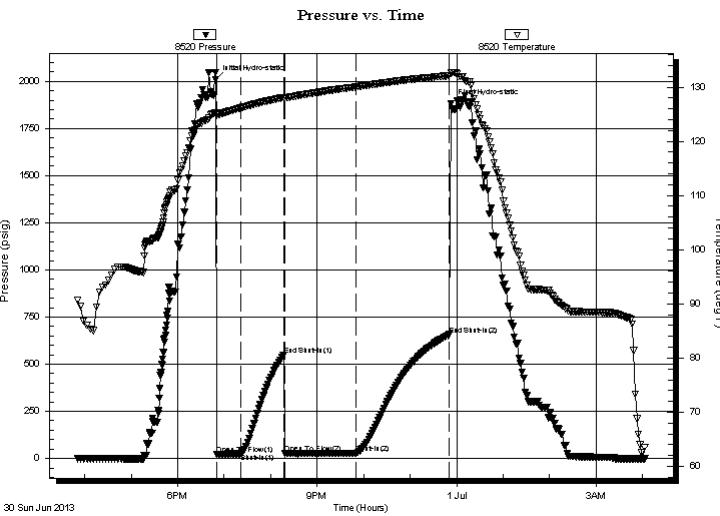
Start Time: 15:51:00

End Time: 04:04:00

Time On Btm: 2013.06.30 @ 18:49:00

Time Off Btm: 2013.06.30 @ 23:52:30

**TEST COMMENT:** 30 - IF- 1/8" Blow died back to weak surface blow .  
60 - IS- No Return  
60 - FF- No Blow  
120 - FS- No Return



## PRESSURE SUMMARY

Time (Min.)	Pressure (psig)	Temp (deg F)	Annotation
0	2007.99	125.27	Initial Hydro-static
2	22.68	124.81	Open To Flow (1)
32	24.92	126.14	Shut-In(1)
88	546.93	128.10	End Shut-In(1)
90	25.50	127.91	Open To Flow (2)
181	27.26	130.03	Shut-In(2)
302	656.32	132.13	End Shut-In(2)
304	1882.50	132.61	Final Hydro-static

## Recovery

Length (ft)	Description	Volume (bbl)
10.00	OSM 100M (oil spots)	0.05

## Gas Rates

Choke (inches)	Pressure (psig)	Gas Rate (Mcf/d)



**TRILOBITE  
TESTING, INC.**

# DRILL STEM TEST REPORT

**FLUID SUMMARY**

Berexco, LLC.

**9-1S-36W Rawlins, KS**

2020 N Bramblewood  
Wichita, KS 67206

**Moser #3-9**

Job Ticket: 52133

**DST#: 2**

ATTN: Bryan Bynog

Test Start: 2013.06.30 @ 15:50:00

## Mud and Cushion Information

Mud Type: Gel Chem

Cushion Type:

Oil API:

deg API

Mud Weight: 9.00 lb/gal

Cushion Length:

ft

Water Salinity:

ppm

Viscosity: 56.00 sec/qt

Cushion Volume:

bbbl

Water Loss: 7.20 in<sup>3</sup>

Gas Cushion Type:

Resistivity: 0.00 ohm.m

Gas Cushion Pressure:

psig

Salinity: 600.00 ppm

Filter Cake: 2.00 inches

## Recovery Information

Recovery Table

Length ft	Description	Volume bbl
10.00	OSM 100M (oil spots)	0.049

Total Length: 10.00 ft      Total Volume: 0.049 bbl

Num Fluid Samples: 0

Num Gas Bombs: 0

Serial #:

Laboratory Name:

Laboratory Location:

Recovery Comments:

Serial #: 8520

Outside Berexco, LLC.

Moser #3-9

DST Test Number: 2

