



**TRILOBITE
TESTING, INC.**

DRILL STEM TEST REPORT

Berexco, LLC.

9-1S-36W Rawlins, KS

2020 N Bramblewood
Wichita, KS 67206

Moser #3-9

Job Ticket: 53453

DST#: 5

ATTN: Bryan Bynog

Test Start: 2013.07.04 @ 14:26:00

GENERAL INFORMATION:

Formation: **LKC " C - D "**

Deviated: No Whipstock: ft (KB)

Time Tool Opened: 17:05:30

Time Test Ended: 00:19:00

Test Type: Conventional Bottom Hole (Reset)

Tester: Ryan Nichols

Unit No: 66

Interval: 4100.00 ft (KB) To 4210.00 ft (KB) (TVD)

Reference Elevations: 3102.00 ft (KB)

Total Depth: 4210.00 ft (KB) (TVD)

3092.00 ft (CF)

Hole Diameter: 7.88 inches Hole Condition: Good

KB to GR/CF: 10.00 ft

Serial #: 8520 Outside

Press @ Run Depth: 90.92 psig @ 4101.00 ft (KB)

Capacity: 8000.00 psig

Start Date: 2013.07.04

End Date:

2013.07.05

Last Calib.:

2013.07.05

Start Time:

14:27:00

End Time:

00:19:00

Time On Btm:

2013.07.04 @ 17:04:00

Time Off Btm:

2013.07.04 @ 22:05:00

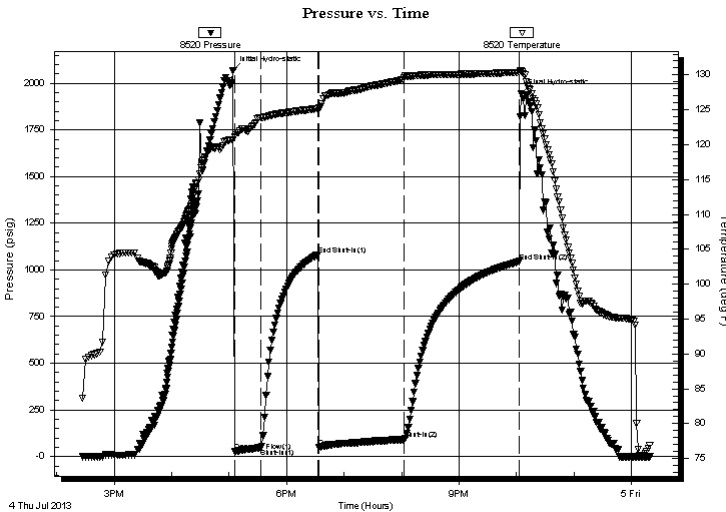
TEST COMMENT: 30 IF - 1/4" blow built to 2"

60 ISI - No return

90 FF - No blow

120 FSI - No return

PRESSURE SUMMARY



Time (Min.)	Pressure (psig)	Temp (deg F)	Annotation
0	2068.89	120.67	Initial Hydro-static
2	26.04	121.12	Open To Flow (1)
29	46.69	123.91	Shut-In(1)
89	1081.47	125.18	End Shut-In(1)
90	50.14	125.25	Open To Flow (2)
179	90.92	129.55	Shut-In(2)
299	1044.69	130.38	End Shut-In(2)
301	1942.18	130.54	Final Hydro-static

Recovery

Length (ft)	Description	Volume (bbl)
120.00	OCM - 5%o - 95%M	0.59
5.00	OCM - 35%o - 65%M	0.02

* Recovery from multiple tests

Gas Rates

	Choke (inches)	Pressure (psig)	Gas Rate (Mcf/d)



**TRILOBITE
TESTING, INC.**

DRILL STEM TEST REPORT

FLUID SUMMARY

Berexco, LLC.

9-1S-36W Rawlins, KS

2020 N Bramblewood
Wichita, KS 67206

Moser #3-9

Job Ticket: 53453

DST#: 5

ATTN: Bryan Bynog

Test Start: 2013.07.04 @ 14:26:00

Mud and Cushion Information

Mud Type: Gel Chem

Cushion Type:

Oil API:

deg API

Mud Weight: 9.00 lb/gal

Cushion Length:

ft

Water Salinity:

ppm

Viscosity: 40.00 sec/qt

Cushion Volume:

bbbl

Water Loss: 8.78 in³

Gas Cushion Type:

Resistivity: 0.00 ohm.m

Gas Cushion Pressure:

psig

Salinity: 550.00 ppm

Filter Cake: 2.00 inches

Recovery Information

Recovery Table

Length ft	Description	Volume bbbl
120.00	OCM - 5%o - 95%M	0.590
5.00	OCM - 35%o - 65%M	0.025

Total Length: 125.00 ft Total Volume: 0.615 bbl

Num Fluid Samples: 0

Num Gas Bombs: 0

Serial #:

Laboratory Name:

Laboratory Location:

Recovery Comments:

Pressure vs. Time

