



**TRILOBITE TESTING, INC.**

# DRILL STEM TEST REPORT

Berexco, LLC.

**9-1S-36W Rawlins, KS**

2020 N Bramblewood  
Wichita, KS 67206

**Moser #3-9**

Job Ticket: 53455

**DST#: 7**

ATTN: Bryan Bynog

Test Start: 2013.07.06 @ 19:44:00

## GENERAL INFORMATION:

Formation: **Pawnee**

Deviated: No Whipstock: ft (KB)

Time Tool Opened: 22:16:00

Time Test Ended: 05:53:00

Test Type: Conventional Bottom Hole (Reset)

Tester: Ryan Nichols

Unit No: 66

**Interval: 4395.00 ft (KB) To 4450.00 ft (KB) (TVD)**

Total Depth: 4450.00 ft (KB) (TVD)

Hole Diameter: 7.88 inches Hole Condition: Good

Reference Elevations: 3102.00 ft (KB)

3092.00 ft (CF)

KB to GR/CF: 10.00 ft

## Serial #: 8520

Press @ Run Depth: 25.96 psig @ ft (KB)

Start Date: 2013.07.06

End Date:

2013.07.07

Start Time: 19:45:00

End Time:

05:53:00

Capacity: 8000.00 psig

Last Calib.: 2013.07.07

Time On Btm: 2013.07.06 @ 22:13:00

Time Off Btm: 2013.07.07 @ 03:17:00

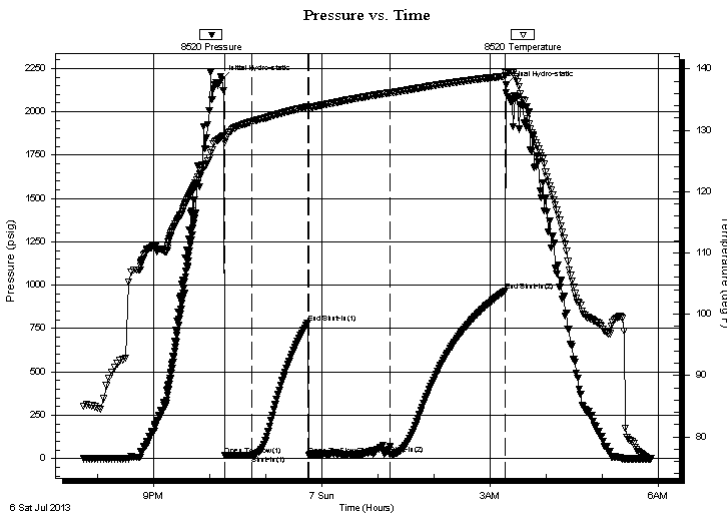
TEST COMMENT: 30 IF - Surface blow died @ 11 mins

60 ISI - No return

90 FF - No blow

120 FSI - No return

## PRESSURE SUMMARY



Time (Min.)	Pressure (psig)	Temp (deg F)	Annotation
0	2185.54	128.95	Initial Hydro-static
3	17.39	128.05	Open To Flow (1)
33	20.43	131.42	Shut-In(1)
92	782.59	133.83	End Shut-In(1)
93	20.86	133.65	Open To Flow (2)
181	25.96	136.08	Shut-In(2)
303	965.10	138.82	End Shut-In(2)
304	2154.12	139.44	Final Hydro-static

## Recovery

Length (ft)	Description	Volume (bbl)
5.00	Mud w/oil spots 100%M	0.02

## Gas Rates

Choke (inches)	Pressure (psig)	Gas Rate (Mcf/d)

\* Recovery from multiple tests



**TRILOBITE  
TESTING, INC.**

# DRILL STEM TEST REPORT

**FLUID SUMMARY**

Berexco, LLC.

**9-1S-36W Rawlins, KS**

2020 N Bramblewood  
Wichita, KS 67206

**Moser #3-9**

Job Ticket: 53455

**DST#: 7**

ATTN: Bryan Bynog

Test Start: 2013.07.06 @ 19:44:00

## Mud and Cushion Information

Mud Type: Gel Chem

Cushion Type:

Oil API:

deg API

Mud Weight: 9.00 lb/gal

Cushion Length:

ft

Water Salinity:

ppm

Viscosity: 100.00 sec/qt

Cushion Volume:

bbbl

Water Loss: 7.99 in<sup>3</sup>

Gas Cushion Type:

Resistivity: 0.00 ohm.m

Gas Cushion Pressure:

psig

Salinity: 1700.00 ppm

Filter Cake: 3.00 inches

## Recovery Information

Recovery Table

Length ft	Description	Volume bbl
5.00	Mud w /oil spots 100%M	0.025

Total Length: 5.00 ft      Total Volume: 0.025 bbl

Num Fluid Samples: 0

Num Gas Bombs: 0

Serial #:

Laboratory Name:

Laboratory Location:

Recovery Comments:

