



TRILOBITE TESTING, INC.

DRILL STEM TEST REPORT

Brito Oil Compant, Inc
 1700 N. Waterfront PKWY
 Bldg 300 Suite C
 Wichita KS 67206
 ATTN: Brad Rine

01-12s-33w Logan Co KS

Weber Trust "B" 1-1

Job Ticket: 53271 **DST#: 1**

Test Start: 2013.06.23 @ 16:56:15

GENERAL INFORMATION:

Formation: **LKC "E"**
 Deviated: No Whipstock: ft (KB)
 Time Tool Opened: 19:08:00
 Time Test Ended: 23:31:00
 Interval: **4078.00 ft (KB) To 4097.00 ft (KB) (TVD)**
 Total Depth: 4097.00 ft (KB) (TVD)
 Hole Diameter: 7.88 inches Hole Condition: Fair
 Test Type: Conventional Bottom Hole (Initial)
 Tester: Mike Roberts
 Unit No: 65
 Reference Elevations: 3035.00 ft (KB)
 3024.00 ft (CF)
 KB to GR/CF: 11.00 ft

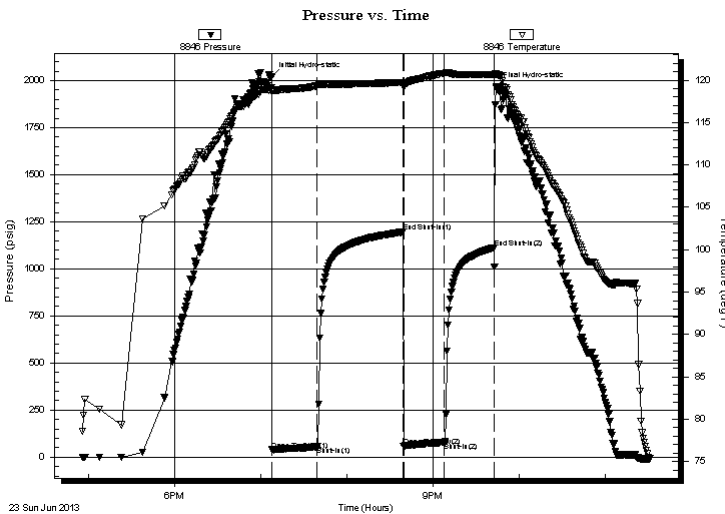
Serial #: 8846

Outside

Press @ Run Depth: 78.36 psig @ 4079.00 ft (KB) Capacity: 8000.00 psig
 Start Date: 2013.06.23 End Date: 2013.06.23 Last Calib.: 2013.06.23
 Start Time: 16:56:15 End Time: 23:31:00 Time On Btm: 2013.06.23 @ 19:07:45
 Time Off Btm: 2013.06.23 @ 21:43:45

TEST COMMENT: IF: Built to 1" blow
 IS: No return blow
 FF: No blow
 FS: No return blow

PRESSURE SUMMARY



Time (Min.)	Pressure (psig)	Temp (deg F)	Annotation
0	2020.68	119.08	Initial Hydro-static
1	38.75	118.62	Open To Flow (1)
32	55.13	119.31	Shut-In(1)
92	1195.34	119.72	End Shut-In(1)
92	58.77	119.17	Open To Flow (2)
121	78.36	120.81	Shut-In(2)
155	1112.67	120.62	End Shut-In(2)
156	1965.56	120.68	Final Hydro-static

Recovery

Length (ft)	Description	Volume (bbl)
30.00	w cm w with oil spots 2%w 98%m	0.15
60.00	mcw 40%m 60%w	0.30

Gas Rates

Choke (inches)	Pressure (psig)	Gas Rate (Mcf/d)



**TRILOBITE
TESTING, INC.**

DRILL STEM TEST REPORT

FLUID SUMMARY

Brito Oil Compant, Inc

01-12s-33w Logan Co KS

1700 N. Waterfront PKWY
Bldg 300 Suite C
Wichita KS 67206
ATTN: Brad Rine

Weber Trust "B" 1-1

Job Ticket: 53271

DST#: 1

Test Start: 2013.06.23 @ 16:56:15

Mud and Cushion Information

Mud Type: Gel Chem

Cushion Type:

Oil API:

0 deg API

Mud Weight: 9.00 lb/gal

Cushion Length:

ft

Water Salinity:

12000 ppm

Viscosity: 47.00 sec/qt

Cushion Volume:

bbbl

Water Loss: 7.97 in³

Gas Cushion Type:

Resistivity: 0.00 ohm.m

Gas Cushion Pressure:

psig

Salinity: 2500.00 ppm

Filter Cake: 1.00 inches

Recovery Information

Recovery Table

Length ft	Description	Volume bbbl
30.00	w cm w ith oil spots 2%w 98%m	0.148
60.00	mcw 40%m 60%w	0.295

Total Length: 90.00 ft Total Volume: 0.443 bbl

Num Fluid Samples: 0

Num Gas Bombs: 0

Serial #:

Laboratory Name:

Laboratory Location:

Recovery Comments: RW= .497@77.5*= 12,000 ppm

