



**TRILOBITE
TESTING, INC.**

DRILL STEM TEST REPORT

Brito Oil Company, Inc
1700 N. Waterfront PKWY
Bldg 300 Suite C
Wichita KS 67206
ATTN: Brad Rine

01-12s-33w Logan Co KS

Weber Trust "B" 1-1

Job Ticket: 53273 **DST#: 3**

Test Start: 2013.06.26 @ 03:15:15

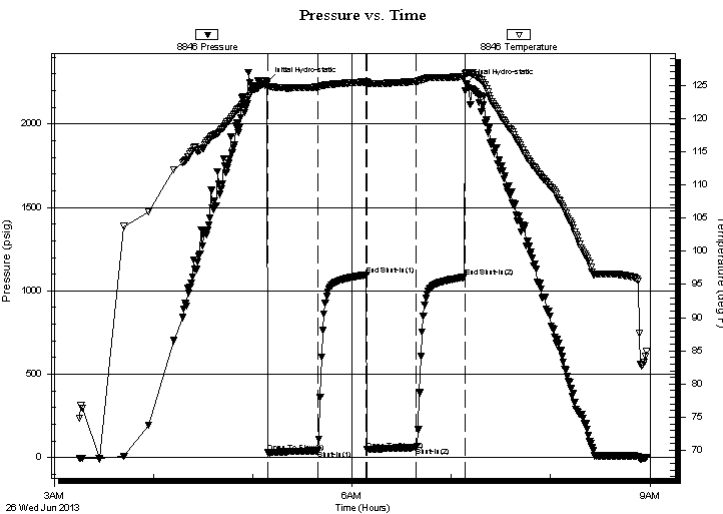
GENERAL INFORMATION:

Formation: **Johnson**
 Deviated: No Whipstock: ft (KB)
 Time Tool Opened: 05:09:00
 Time Test Ended: 08:58:30
 Interval: **4533.00 ft (KB) To 4577.00 ft (KB) (TVD)**
 Total Depth: 4577.00 ft (KB) (TVD)
 Hole Diameter: 7.88 inches Hole Condition: Fair
 Test Type: Conventional Bottom Hole (Reset)
 Tester: Mike Roberts
 Unit No: 65
 Reference Elevations: 3035.00 ft (KB)
 3024.00 ft (CF)
 KB to GR/CF: 11.00 ft

Serial #: 8846 Outside

Press @ Run Depth: 61.43 psig @ 4572.00 ft (KB) Capacity: 8000.00 psig
 Start Date: 2013.06.26 End Date: 2013.06.26 Last Calib.: 2013.06.26
 Start Time: 03:15:15 End Time: 08:58:30 Time On Btm: 2013.06.26 @ 05:08:45
 Time Off Btm: 2013.06.26 @ 07:08:45

TEST COMMENT: IF: Built to weak surface blow and died in 10 min.
 IS: No return blow
 FF: No blow
 FS: No return blow



PRESSURE SUMMARY

Time (Min.)	Pressure (psig)	Temp (deg F)	Annotation
0	2256.36	125.20	Initial Hydro-static
1	30.12	124.60	Open To Flow (1)
31	42.15	124.72	Shut-In(1)
60	1095.90	125.50	End Shut-In(1)
61	48.04	125.21	Open To Flow (2)
90	61.43	125.57	Shut-In(2)
120	1082.39	126.30	End Shut-In(2)
120	2241.13	126.75	Final Hydro-static

Recovery

Length (ft)	Description	Volume (bbl)
70.00	mud 100% m	0.34

Gas Rates

Choke (inches)	Pressure (psig)	Gas Rate (Mcf/d)

* Recovery from multiple tests



**TRILOBITE
TESTING, INC.**

DRILL STEM TEST REPORT

FLUID SUMMARY

Brito Oil Company, Inc

01-12s-33w Logan Co KS

1700 N. Waterfront PKWY
Bldg 300 Suite C
Wichita KS 67206
ATTN: Brad Rine

Weber Trust "B" 1-1

Job Ticket: 53273

DST#: 3

Test Start: 2013.06.26 @ 03:15:15

Mud and Cushion Information

Mud Type: Gel Chem

Cushion Type:

Oil API:

0 deg API

Mud Weight: 9.00 lb/gal

Cushion Length:

ft

Water Salinity:

0 ppm

Viscosity: 49.00 sec/qt

Cushion Volume:

bbbl

Water Loss: 9.58 in³

Gas Cushion Type:

Resistivity: 0.00 ohm.m

Gas Cushion Pressure:

psig

Salinity: 3500.00 ppm

Filter Cake: 1.00 inches

Recovery Information

Recovery Table

Length ft	Description	Volume bbl
70.00	mud 100% m	0.344

Total Length: 70.00 ft Total Volume: 0.344 bbl

Num Fluid Samples: 0

Num Gas Bombs: 0

Serial #:

Laboratory Name:

Laboratory Location:

Recovery Comments:

