



TRILOBITE TESTING, INC.

DRILL STEM TEST REPORT

Sam Gary Jr. and Associates Inc.

26-4s-23w

1515 Wynkoop STE 700
Denver, Co

Sproul #1-26

Job Ticket: 48524

DST#: 1

ATTN: Clayton Camozzi

Test Start: 2013.04.17 @ 02:34:37

GENERAL INFORMATION:

Formation: **Toronto-Lans "A"**

Deviated: No Whipstock: ft (KB)

Time Tool Opened: 04:28:57

Time Test Ended: 12:40:26

Test Type: Conventional Bottom Hole (Initial)

Tester: Jeff Brown/Daniel Fe

Unit No: 67

Interval: 3408.00 ft (KB) To 3466.00 ft (KB) (TVD)

Reference Elevations: 2336.00 ft (KB)

Total Depth: 3466.00 ft (KB) (TVD)

2328.00 ft (CF)

Hole Diameter: 7.88 inches Hole Condition: Good

KB to GR/CF: 8.00 ft

Serial #: 6625 Outside

Press @ Run Depth: 701.97 psig @ 3444.00 ft (KB)

Capacity: 8000.00 psig

Start Date: 2013.04.17 End Date: 2013.04.17

Last Calib.: 2013.04.17

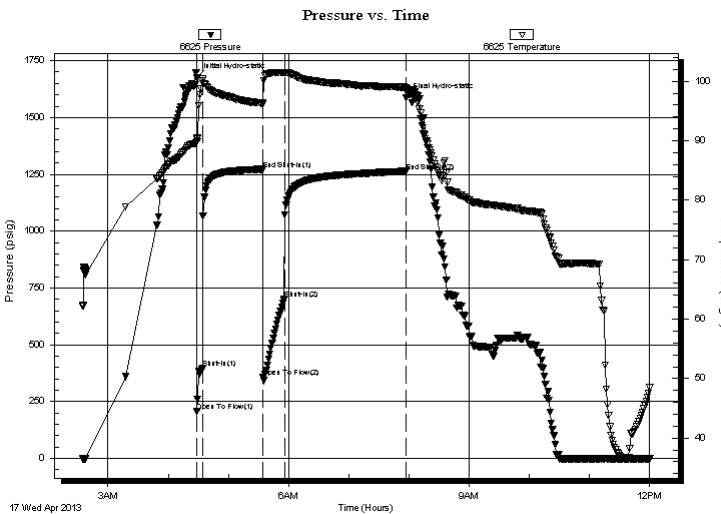
Start Time: 02:34:38 End Time: 12:01:26

Time On Btm: 2013.04.17 @ 04:28:47

Time Off Btm: 2013.04.17 @ 07:57:37

TEST COMMENT: IFP=5-min=Strong blow BOB in 1 min
ISI=60-min=Dead no blow back
FFP=22-min=Strong blow BOB in 1 min
FSI=120-Min=Weak surface blow back built to 3 1/4 in

PRESSURE SUMMARY



Time (Min.)	Pressure (psig)	Temp (deg F)	Annotation
0	1673.62	90.27	Initial Hydro-static
1	206.98	89.82	Open To Flow (1)
6	396.91	100.35	Shut-In(1)
66	1270.87	96.32	End Shut-In(1)
66	356.24	96.02	Open To Flow (2)
88	701.97	101.42	Shut-In(2)
209	1263.53	99.00	End Shut-In(2)
209	1585.68	99.02	Final Hydro-static

Recovery

Length (ft)	Description	Volume (bbl)
122.00	Muddy water. 10% m / 90% w	1.45
935.00	OCMW. 20% o / 10 % m / 70% w	13.12
375.00	HOCGWM. 10% g / 40% o / 20% w / 30%	9.26
0.00	156 G.I.P.	0.00

Gas Rates

	Choke (inches)	Pressure (psig)	Gas Rate (Mcf/d)



**TRILOBITE
TESTING, INC.**

DRILL STEM TEST REPORT

FLUID SUMMARY

Sam Gary Jr. and Associates Inc.

26-4s-23w

1515 Wynkoop STE 700
Denver, Co

Sproul #1-26

Job Ticket: 48524

DST#: 1

ATTN: Clayton Camozzi

Test Start: 2013.04.17 @ 02:34:37

Mud and Cushion Information

Mud Type: Gel Chem

Cushion Type:

Oil API:

31 deg API

Mud Weight: 9.00 lb/gal

Cushion Length:

ft

Water Salinity:

53000 ppm

Viscosity: 54.00 sec/qt

Cushion Volume:

bbbl

Water Loss: 7.60 in³

Gas Cushion Type:

Resistivity: 0.24 ohm.m

Gas Cushion Pressure:

psig

Salinity: 400.00 ppm

Filter Cake: inches

Recovery Information

Recovery Table

Length ft	Description	Volume bbbl
122.00	Muddy water. 10% m / 90% w	1.447
935.00	OCMW. 20% o / 10 % m / 70% w	13.116
375.00	HOCGWM. 10% g / 40% o / 20% w / 30% m	5.260
0.00	156 G.I.P.	0.000

Total Length: 1432.00 ft

Total Volume: 19.823 bbl

Num Fluid Samples: 0

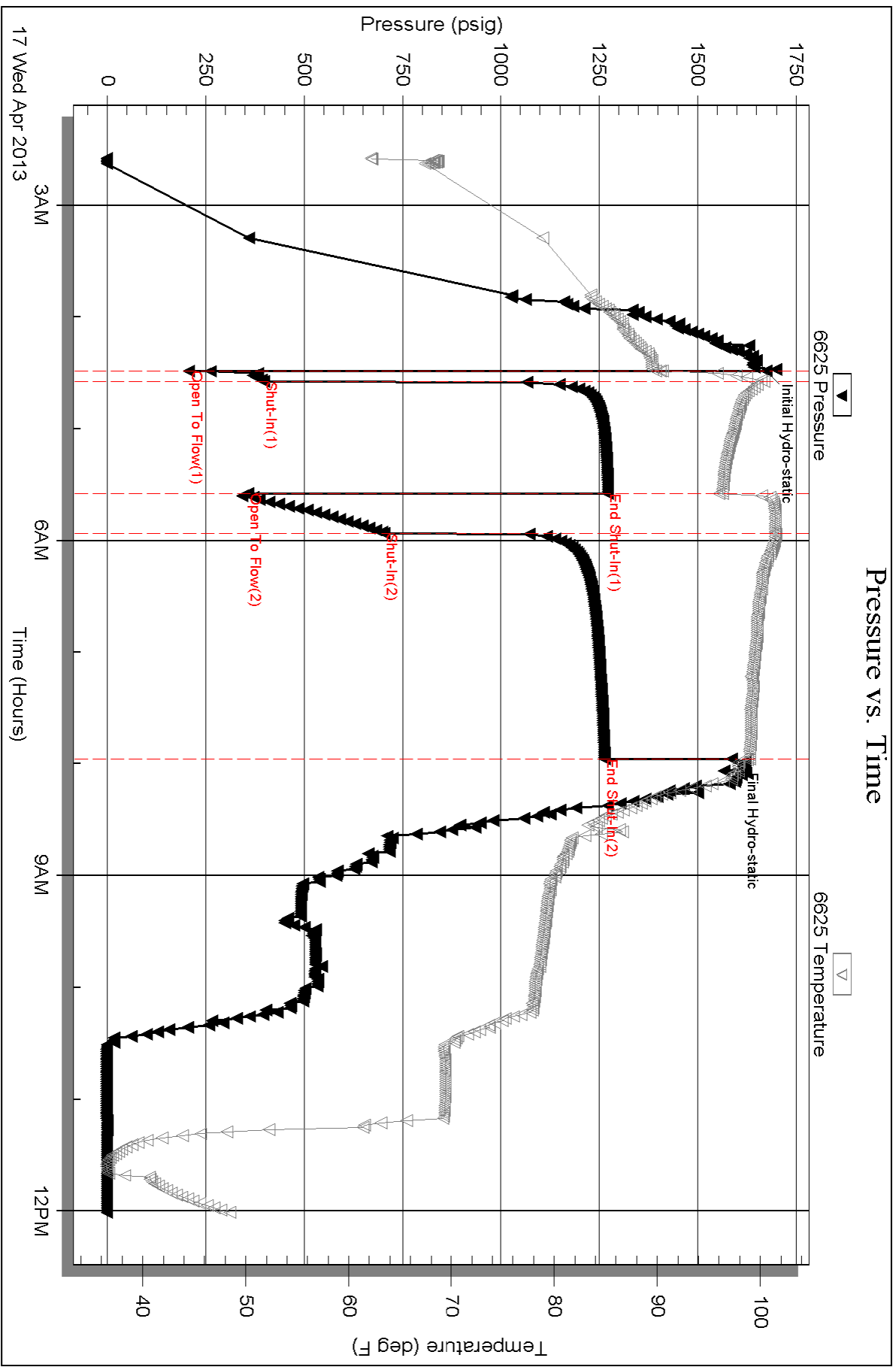
Num Gas Bombs: 0

Serial #:

Laboratory Name:

Laboratory Location:

Recovery Comments: 3000 MI Oil
310 Psi



Serial #: 8736

Fluid

Sam Gary Jr. and Associates Inc.

Sprout #1-26

DST Test Number: 1

