



TRILOBITE TESTING, INC.

DRILL STEM TEST REPORT

O'Brien Resources LLC
 P.o Box 6149
 Shreveport LA 71136
 ATTN: Kurt Talbott

35-16s-30w Lane Co. KS
Snider-Sharp 35 #1
 Job Ticket: 49085 **DST#: 1**
 Test Start: 2013.07.21 @ 05:32:00

GENERAL INFORMATION:

Formation: **Toronto / LKC " A "**
 Deviated: No Whipstock: ft (KB)
 Test Type: Conventional Bottom Hole (Initial)
 Time Tool Opened: 08:10:10 Tester: Will MacLean
 Time Test Ended: 12:22:24 Unit No: 58
 Interval: **3911.00 ft (KB) To 3955.00 ft (KB) (TVD)** Reference Elevations: 2862.00 ft (KB)
 Total Depth: 3955.00 ft (KB) (TVD) 2851.00 ft (CF)
 Hole Diameter: 7.88 inches Hole Condition: Good KB to GR/CF: 11.00 ft

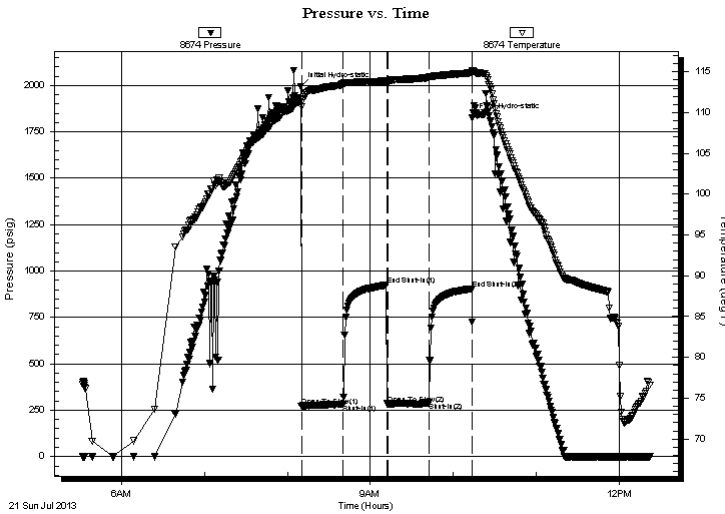
Serial #: 8674

Inside

Press @ Run Depth: 290.82 psig @ 3912.00 ft (KB) Capacity: 8000.00 psig
 Start Date: 2013.07.21 End Date: 2013.07.21 Last Calib.: 2013.07.21
 Start Time: 05:32:00 End Time: 12:22:24 Time On Btm: 2013.07.21 @ 08:09:55
 Time Off Btm: 2013.07.21 @ 10:13:54

TEST COMMENT: IF- Weak Surface Blow Built to 2 1/4"
 IS- No Blow
 FF- Weak Surface Blow Built to 1/2"
 FS- No Blow

PRESSURE SUMMARY



Time (Min.)	Pressure (psig)	Temp (deg F)	Annotation
0	1992.44	111.66	Initial Hydro-static
1	269.99	110.76	Open To Flow (1)
31	282.79	113.51	Shut-In(1)
62	924.31	113.90	End Shut-In(1)
63	283.87	113.78	Open To Flow (2)
93	290.82	114.30	Shut-In(2)
124	905.30	114.90	End Shut-In(2)
124	1826.86	115.18	Final Hydro-static

Recovery

Length (ft)	Description	Volume (bbl)
248.00	WCM 2%w 98%m with Skim of Oil on	T3.48
186.00	OCM 2%oil 98%m	2.61
82.00	OCM 9%oil 91%m	1.15

Gas Rates

Choke (inches)	Pressure (psig)	Gas Rate (Mcf/d)



TRILOBITE TESTING, INC.

DRILL STEM TEST REPORT

O'Brien Resources LLC
 P.o Box 6149
 Shreveport LA 71136
 ATTN: Kurt Talbott

35-16s-30w Lane Co. KS
Snider-Sharp 35 #1
 Job Ticket: 49092 **DST#: 8**
 Test Start: 2013.07.27 @ 00:58:00

GENERAL INFORMATION:

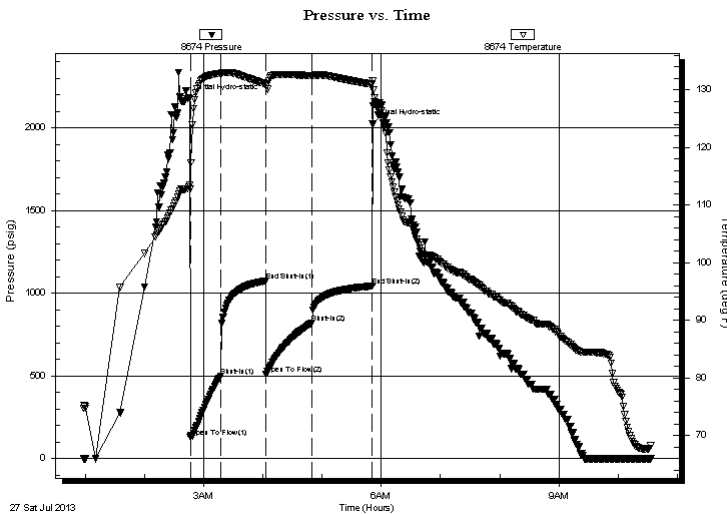
Formation: **Johnson**
 Deviated: No Whipstock: ft (KB)
 Test Type: Conventional Bottom Hole (Reset)
 Time Tool Opened: 02:46:10 Tester: Will MacLean
 Time Test Ended: 10:33:55 Unit No: 58
 Interval: **4506.00 ft (KB) To 4550.00 ft (KB) (TVD)** Reference Elevations: 2862.00 ft (KB)
 Total Depth: 4550.00 ft (KB) (TVD) 2851.00 ft (CF)
 Hole Diameter: 7.88 inches Hole Condition: Good KB to GR/CF: 11.00 ft

Serial #: 8674

Inside

Press @ Run Depth: 822.60 psig @ 4507.00 ft (KB) Capacity: 8000.00 psig
 Start Date: 2013.07.27 End Date: 2013.07.27 Last Calib.: 2013.07.27
 Start Time: 00:58:00 End Time: 10:33:55 Time On Btm: 2013.07.27 @ 02:45:55
 Time Off Btm: 2013.07.27 @ 05:51:09

TEST COMMENT: IF- Strong Surface Blow Built to BOB in 30sec
 IS- Weak Surface Blow in 4min Built to BOB in 17 1/2min
 FF- Surface Blow Built to BOB in 2 1/4min (Gas to Surface in 25min to Weak to Guage)
 FS- Weak Surface Blow Built to BOB in 10min (Bled it off the rest of the Shut In Period)



PRESSURE SUMMARY

Time (Min.)	Pressure (psig)	Temp (deg F)	Annotation
0	2178.48	113.50	Initial Hydro-static
1	129.43	112.87	Open To Flow (1)
31	499.64	132.86	Shut-In(1)
77	1075.18	131.01	End Shut-In(1)
78	510.79	130.66	Open To Flow (2)
124	822.60	132.47	Shut-In(2)
185	1043.42	130.97	End Shut-In(2)
186	2022.26	131.53	Final Hydro-static

Recovery

Length (ft)	Description	Volume (bbl)
124.00	OGCM 10%oil 19%g 71%m	1.74
372.00	MGCO 10%m 38%g 52%oil	5.22
868.00	MGCO 5%m 19%g 76%oil	12.18
620.00	GO 30%g 70%oil	8.70
434.00	GO 23%g 77%oil	6.09
0.00	2046' of GIP	0.00

* Recovery from multiple tests

Gas Rates

Choke (inches)	Pressure (psig)	Gas Rate (Mcf/d)



**TRILOBITE
TESTING, INC.**

DRILL STEM TEST REPORT

FLUID SUMMARY

O'Brien Resources LLC

35-16s-30w Lane Co. KS

P.o Box 6149
Shreveport LA 71136

Snider-Sharp 35 #1

Job Ticket: 49092 **DST#: 8**

ATTN: Kurt Talbott

Test Start: 2013.07.27 @ 00:58:00

Mud and Cushion Information

Mud Type: Gel Chem	Cushion Type:	Oil API: 32 deg API
Mud Weight: 9.00 lb/gal	Cushion Length: ft	Water Salinity: ppm
Viscosity: 56.00 sec/qt	Cushion Volume: bbl	
Water Loss: 9.56 in ³	Gas Cushion Type:	
Resistivity: ohm.m	Gas Cushion Pressure: psig	
Salinity: 2200.00 ppm		
Filter Cake: 1.00 inches		

Recovery Information

Recovery Table

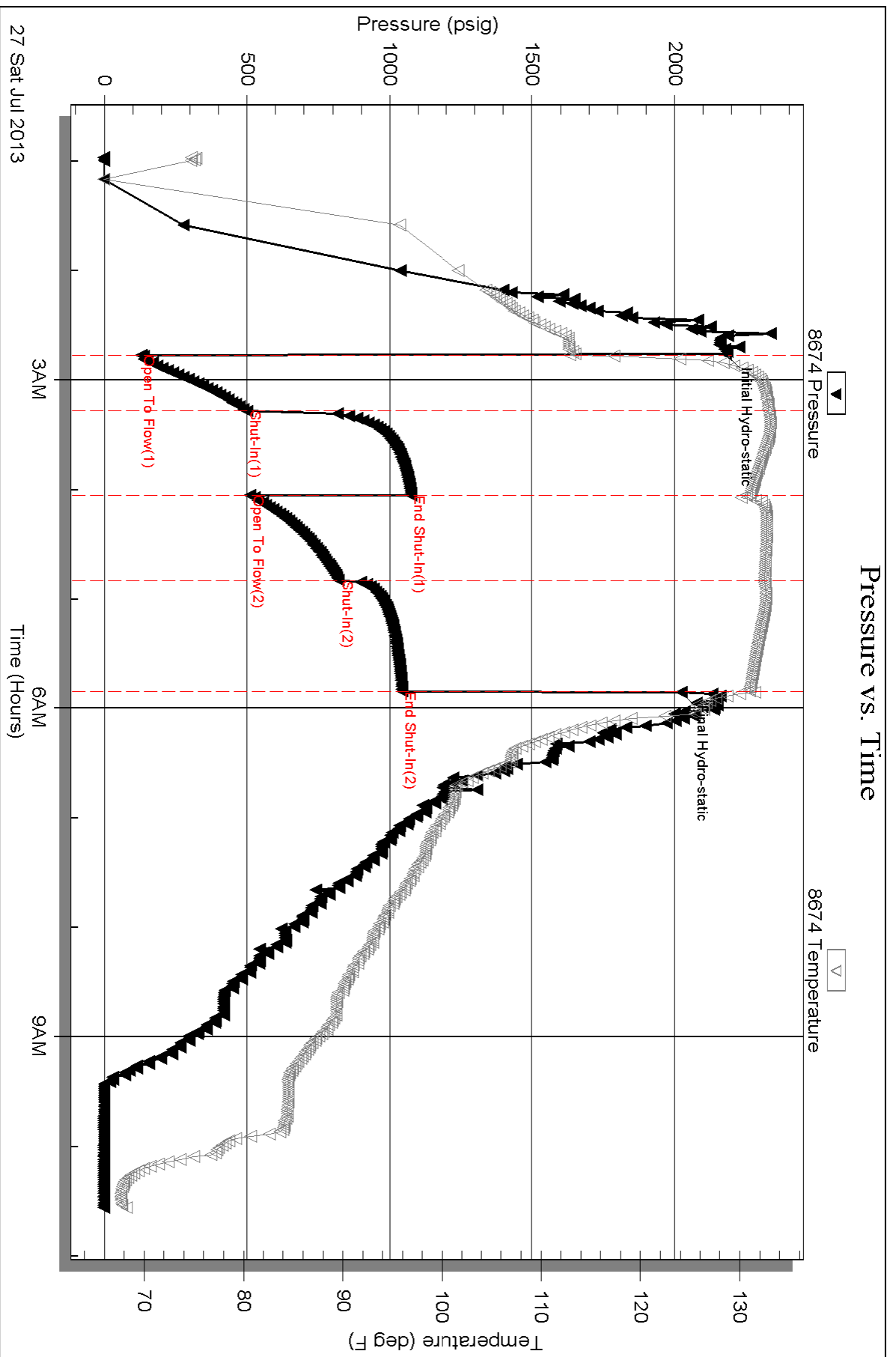
Length ft	Description	Volume bbl
124.00	OGCM 10%oil 19%g 71%m	1.739
372.00	MGCO 10%m 38%g 52%oil	5.218
868.00	MGCO 5%m 19%g 76%oil	12.176
620.00	GO 30%g 70%oil	8.697
434.00	GO 23%g 77%oil	6.088
0.00	2046' of GIP	0.000

Total Length: 2418.00 ft Total Volume: 33.918 bbl

Num Fluid Samples: 0 Num Gas Bombs: 0 Serial #:

Laboratory Name: Laboratory Location:

Recovery Comments: API is 33 @ 70f = 32

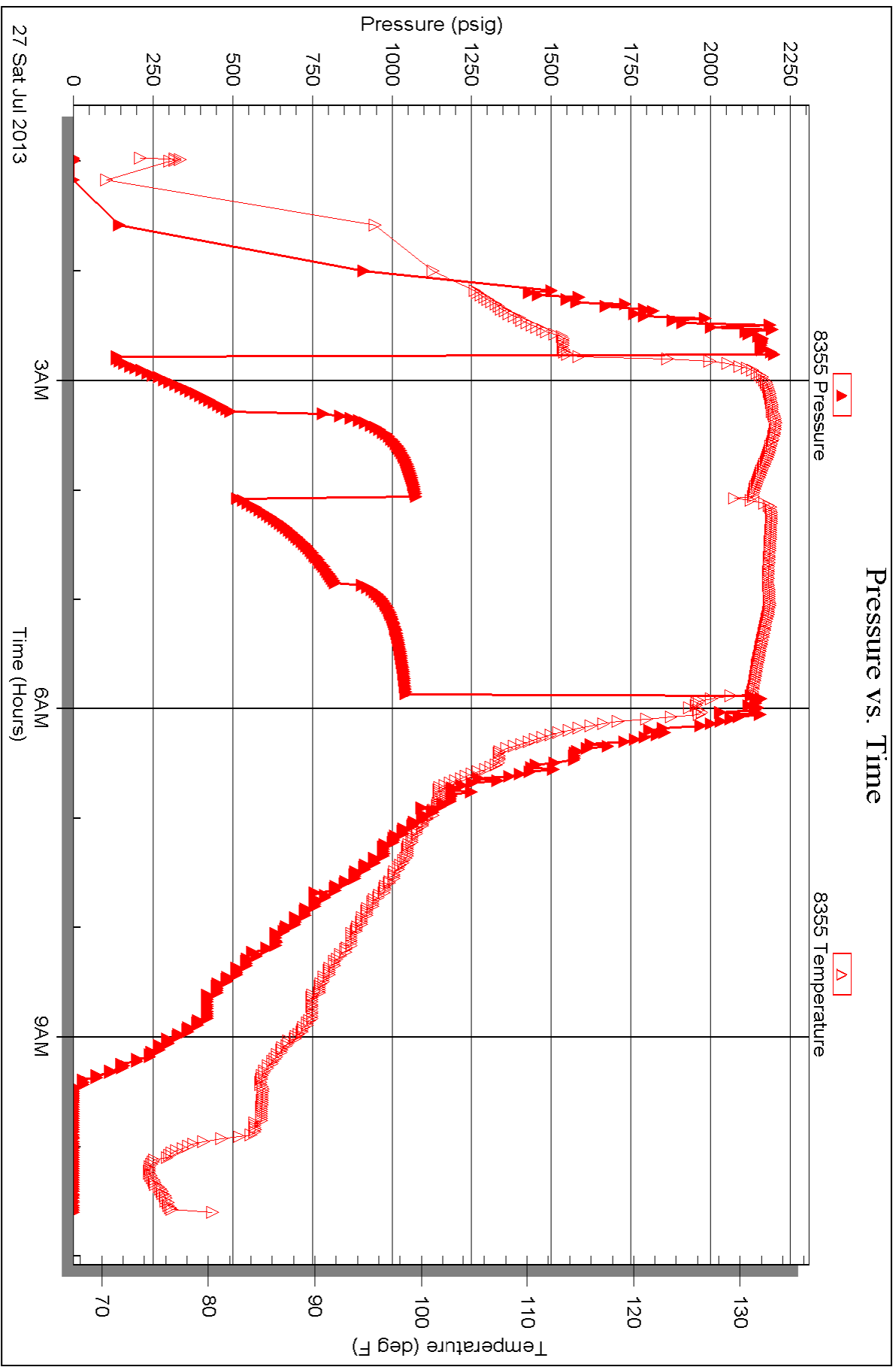


Serial #: 8355

Outside O'Brien Resources LLC

Snider-Sharp 35 #1

DST Test Number: 8





TRILOBITE TESTING, INC.

DRILL STEM TEST REPORT

O'Brien Resources LLC
 P.o Box 6149
 Shreveport LA 71136
 ATTN: Kurt Talbott

35-16s-30w Lane Co. KS
Snider-Sharp 35 #1
 Job Ticket: 49091 **DST#: 7**
 Test Start: 2013.07.26 @ 08:56:00

GENERAL INFORMATION:

Formation: **FT. Scott / Cherokee**
 Deviated: No Whipstock: ft (KB) Test Type: Conventional Bottom Hole (Reset)
 Time Tool Opened: 10:49:25 Tester: Will MacLean
 Time Test Ended: 16:03:09 Unit No: 58
 Interval: **4423.00 ft (KB) To 4510.00 ft (KB) (TVD)** Reference Elevations: 2862.00 ft (KB)
 Total Depth: 4510.00 ft (KB) (TVD) 2851.00 ft (CF)
 Hole Diameter: 7.88 inches Hole Condition: Good KB to GR/CF: 11.00 ft

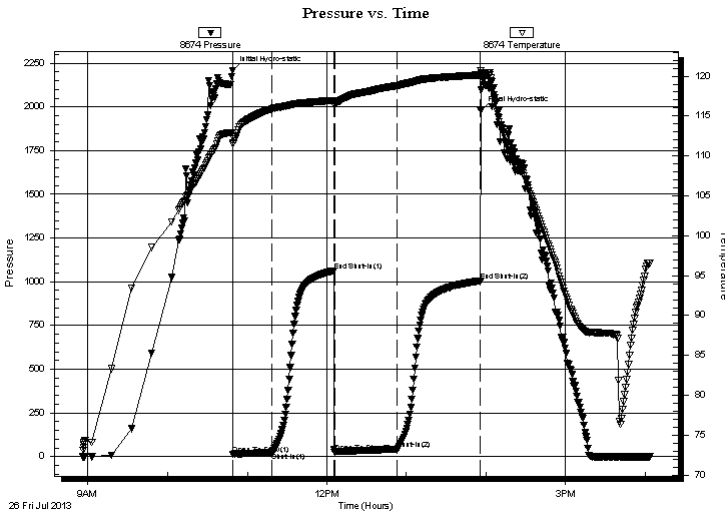
Serial #: 8674

Inside

Press @ Run Depth: 42.99 psig @ 4424.00 ft (KB) Capacity: 8000.00 psig
 Start Date: 2013.07.26 End Date: 2013.07.26 Last Calib.: 2013.07.26
 Start Time: 08:56:00 End Time: 16:03:09 Time On Btm: 2013.07.26 @ 10:49:10
 Time Off Btm: 2013.07.26 @ 13:55:54

TEST COMMENT: IF- Weak Surface Blow Built to BOB in 25min
 IS- No Blow
 FF- FF- Surface Blow Built to BOB in 8 1/4min
 FS- Weak Surface Blow in 40min

PRESSURE SUMMARY



Time (Min.)	Pressure (psig)	Temp (deg F)	Annotation
0	2208.96	112.32	Initial Hydro-static
1	14.71	111.53	Open To Flow (1)
30	25.64	115.85	Shut-In(1)
76	1062.97	116.97	End Shut-In(1)
77	23.47	116.61	Open To Flow (2)
124	42.99	118.82	Shut-In(2)
187	1005.63	120.16	End Shut-In(2)
187	1978.73	120.73	Final Hydro-static

Recovery

Length (ft)	Description	Volume (bbl)
62.00	MOCG 29%w 34%oil 37%g	0.87
13.00	WGOCM 3%w 17%g 28%oil 52%m	0.18
2.00	100%oil	0.03
0.00	729' of GIP	0.00

* Recovery from multiple tests

Gas Rates

Choke (inches)	Pressure (psig)	Gas Rate (Mcf/d)



**TRILOBITE
TESTING, INC.**

DRILL STEM TEST REPORT

FLUID SUMMARY

O'Brien Resources LLC

35-16s-30w Lane Co. KS

P.o Box 6149
Shreveport LA 71136

Snider-Sharp 35 #1

Job Ticket: 49091 **DST#: 7**

ATTN: Kurt Talbott

Test Start: 2013.07.26 @ 08:56:00

Mud and Cushion Information

Mud Type: Gel Chem	Cushion Type:	Oil API:	deg API
Mud Weight: 9.00 lb/gal	Cushion Length: ft	Water Salinity:	ppm
Viscosity: 56.00 sec/qt	Cushion Volume: bbl		
Water Loss: 9.57 in ³	Gas Cushion Type:		
Resistivity: ohm.m	Gas Cushion Pressure: psig		
Salinity: 2200.00 ppm			
Filter Cake: 1.00 inches			

Recovery Information

Recovery Table

Length ft	Description	Volume bbl
62.00	MOCG 29%m 34%oil 37%g	0.870
13.00	WGOCM 3%w 17%g 28%oil 52%m	0.182
2.00	100%oil	0.028
0.00	729' of GIP	0.000

Total Length: 77.00 ft Total Volume: 1.080 bbl

Num Fluid Samples: 0

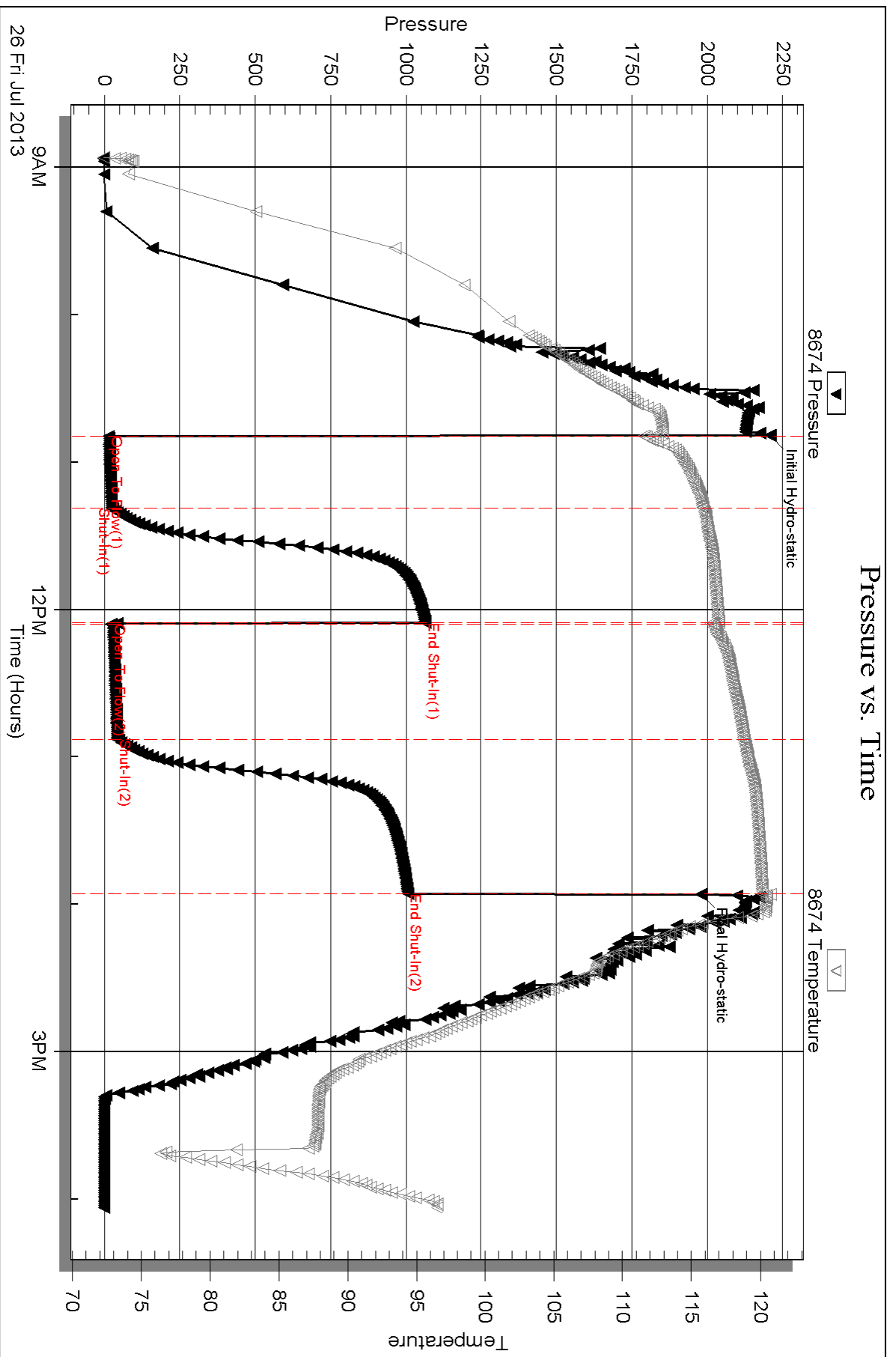
Num Gas Bombs: 0

Serial #:

Laboratory Name:

Laboratory Location:

Recovery Comments:





**TRILOBITE
TESTING, INC.**

DRILL STEM TEST REPORT

O'Brien Resources LLC

35-16s-30w Lane Co. KS

P.o Box 6149
Shreveport LA 71136

Snider-Sharp 35 #1

Job Ticket: 49090

DST#: 6

ATTN: Kurt Talbott

Test Start: 2013.07.25 @ 07:22:00

GENERAL INFORMATION:

Formation: **Marmaton**

Deviated: No Whipstock: ft (KB)

Time Tool Opened: 09:28:25

Time Test Ended: 13:35:39

Test Type: Conventional Bottom Hole (Reset)

Tester: Will MacLean

Unit No: 58

Interval: 4306.00 ft (KB) To 4390.00 ft (KB) (TVD)

Reference Elevations: 2862.00 ft (KB)

Total Depth: 4390.00 ft (KB) (TVD)

2851.00 ft (CF)

Hole Diameter: 7.88 inches Hole Condition: Good

KB to GR/CF: 11.00 ft

Serial #: 8674

Inside

Press @ Run Depth: 21.26 psig @ 4307.00 ft (KB)

Capacity: 8000.00 psig

Start Date: 2013.07.25

End Date:

2013.07.25

Last Calib.:

2013.07.25

Start Time: 07:22:00

End Time:

13:35:39

Time On Btm:

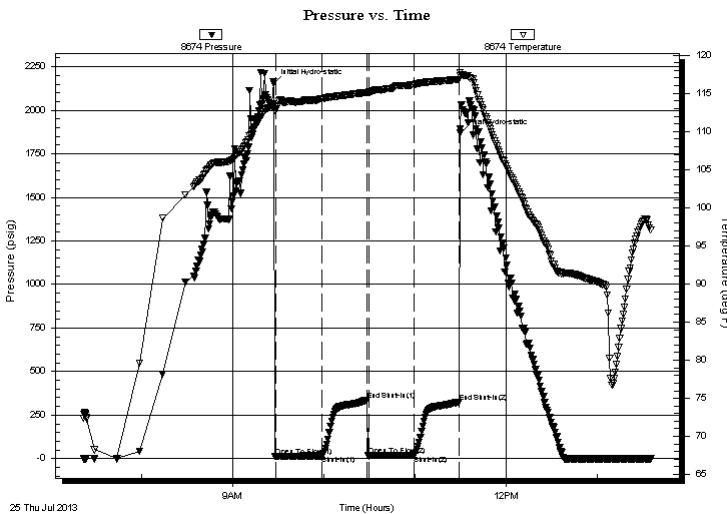
2013.07.25 @ 09:27:10

Time Off Btm:

2013.07.25 @ 11:29:40

TEST COMMENT: IF- Weak Surface Blow Built to 1"
IS- No Blow
FF-Weak Surface Blow Built to 1"
FS- No Blow

PRESSURE SUMMARY



Time (Min.)	Pressure (psig)	Temp (deg F)	Annotation
0	2152.98	113.28	Initial Hydro-static
2	12.62	112.92	Open To Flow (1)
32	16.97	114.31	Shut-In(1)
62	335.52	115.12	End Shut-In(1)
63	16.74	115.15	Open To Flow (2)
93	21.26	116.15	Shut-In(2)
123	326.10	116.84	End Shut-In(2)
123	1867.45	117.75	Final Hydro-static

Recovery

Length (ft)	Description	Volume (bbl)
10.00	GWOCM 5%g 7%w 43%oil 45%m	0.14
10.00	GO 2%g 98%oil	0.14

Gas Rates

Choke (inches)	Pressure (psig)	Gas Rate (Mcf/d)

* Recovery from multiple tests



**TRILOBITE
TESTING, INC.**

DRILL STEM TEST REPORT

FLUID SUMMARY

O'Brien Resources LLC

35-16s-30w Lane Co. KS

P.o Box 6149
Shreveport LA 71136

Snider-Sharp 35 #1

Job Ticket: 49090 **DST#: 6**

ATTN: Kurt Talbott

Test Start: 2013.07.25 @ 07:22:00

Mud and Cushion Information

Mud Type: Gel Chem
Mud Weight: 9.00 lb/gal
Viscosity: 55.00 sec/qt
Water Loss: 9.38 in³
Resistivity: ohm.m
Salinity: 1800.00 ppm
Filter Cake: 1.00 inches

Cushion Type:
Cushion Length: ft
Cushion Volume: bbl
Gas Cushion Type:
Gas Cushion Pressure: psig

Oil API: 30 deg API
Water Salinity: 27000 ppm

Recovery Information

Recovery Table

Length ft	Description	Volume bbl
10.00	GWOCM 5%g 7%w 43%oil 45%m	0.140
10.00	GO 2%g 98%oil	0.140

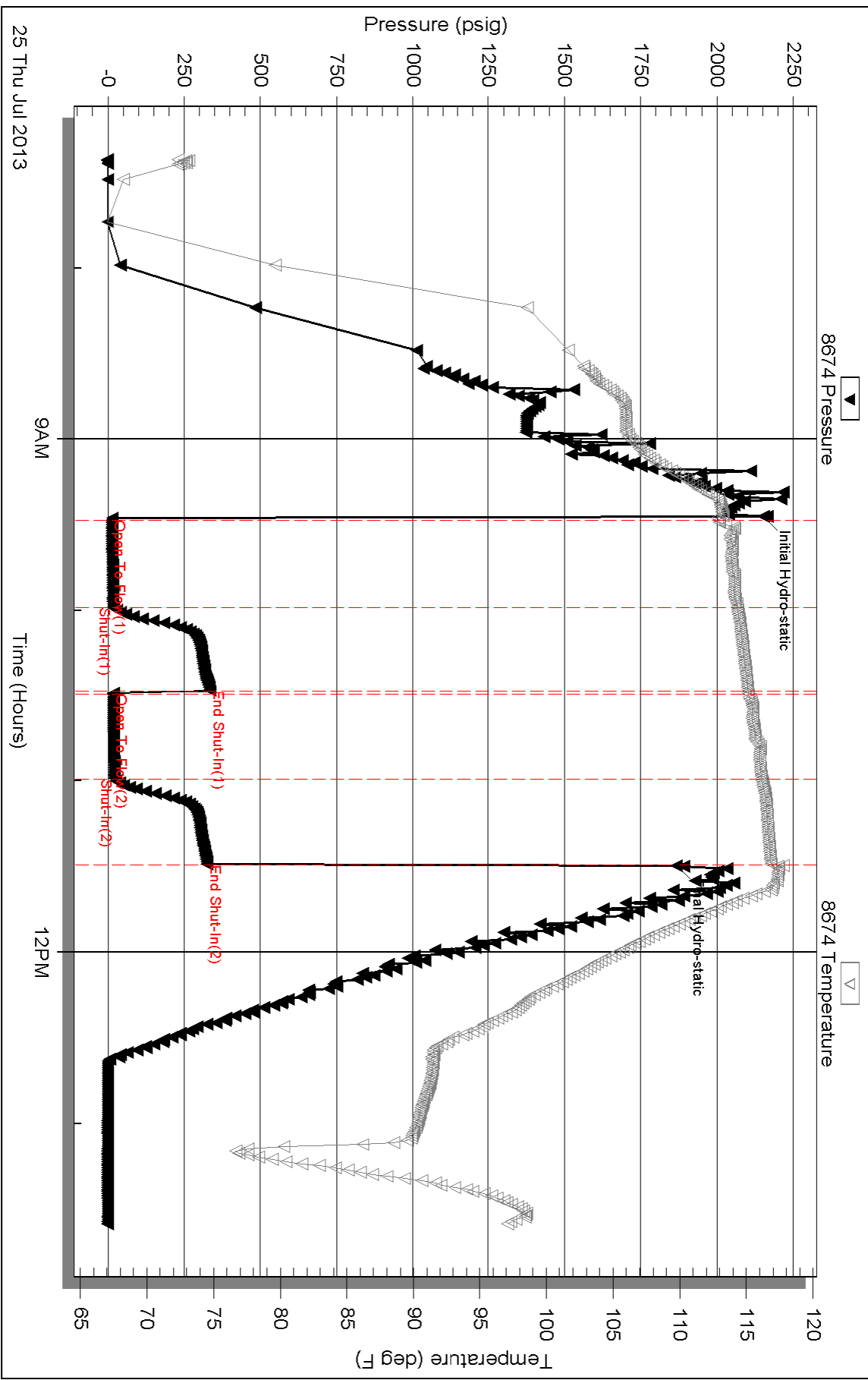
Total Length: 20.00 ft Total Volume: 0.280 bbl

Num Fluid Samples: 0 Num Gas Bombs: 0 Serial #:

Laboratory Name: Laboratory Location:

Recovery Comments: API is 33 @ 90f = 30
RW is .189 @ 90f = 27000

Pressure vs. Time





TRILOBITE TESTING, INC.

DRILL STEM TEST REPORT

O'Brien Resources LLC
 P.o Box 6149
 Shreveport LA 71136
 ATTN: Kurt Talbott

35-16s-30w Lane Co. KS
Snider-Sharp 35 #1
 Job Ticket: 49089 **DST#: 5**
 Test Start: 2013.07.24 @ 10:12:00

GENERAL INFORMATION:

Formation: **LKC " 220 " - L**
 Deviated: No Whipstock: ft (KB)
 Test Type: Conventional Bottom Hole (Reset)
 Time Tool Opened: 12:00:55 Tester: Will MacLean
 Time Test Ended: 16:05:54 Unit No: 58
 Interval: **4240.00 ft (KB) To 4300.00 ft (KB) (TVD)** Reference Elevations: 2862.00 ft (KB)
 Total Depth: 4300.00 ft (KB) (TVD) 2851.00 ft (CF)
 Hole Diameter: 7.88 inches Hole Condition: Good KB to GR/CF: 11.00 ft

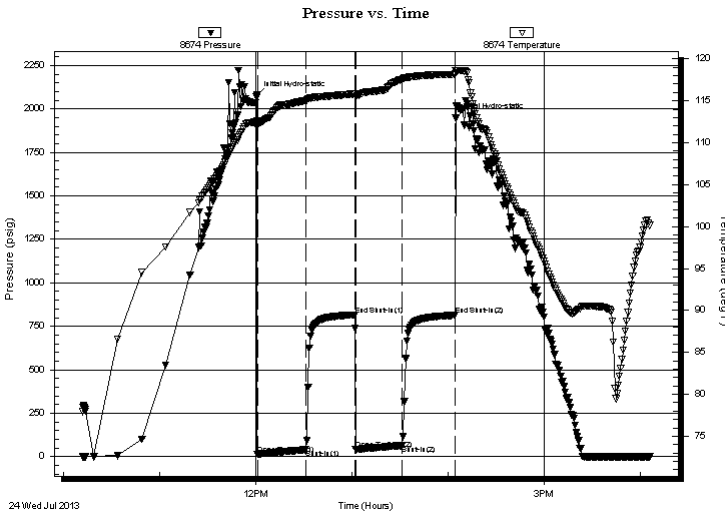
Serial #: 8674

Inside

Press @ Run Depth: 63.70 psig @ 4241.00 ft (KB) Capacity: 8000.00 psig
 Start Date: 2013.07.24 End Date: 2013.07.24 Last Calib.: 2013.07.24
 Start Time: 10:12:00 End Time: 16:05:54 Time On Btm: 2013.07.24 @ 12:00:40
 Time Off Btm: 2013.07.24 @ 14:04:40

TEST COMMENT: IF- Weak Surface Blow Built to 3 1/4"
 IS- No Blow
 FF- Weak Surface Blow Built to 3/4"
 FS- No Blow

PRESSURE SUMMARY



Time (Min.)	Pressure (psig)	Temp (deg F)	Annotation
0	2079.92	112.64	Initial Hydro-static
1	14.85	111.91	Open To Flow (1)
31	40.68	115.02	Shut-In(1)
61	815.95	115.83	End Shut-In(1)
62	42.18	115.47	Open To Flow (2)
91	63.70	117.56	Shut-In(2)
124	813.65	118.16	End Shut-In(2)
124	1948.18	118.59	Final Hydro-static

Recovery

Length (ft)	Description	Volume (bbl)
62.00	OWGCM 2%oil 2%w 6%g 90%m	0.87
20.00	GOCM 6%g 7%oil 87%m	0.28
30.00	GO 4%g 96%oil	0.42

* Recovery from multiple tests

Gas Rates

Choke (inches)	Pressure (psig)	Gas Rate (Mcf/d)



**TRILOBITE
TESTING, INC.**

DRILL STEM TEST REPORT

FLUID SUMMARY

O'Brien Resources LLC

35-16s-30w Lane Co. KS

P.o Box 6149
Shreveport LA 71136

Snider-Sharp 35 #1

Job Ticket: 49089 **DST#: 5**

ATTN: Kurt Talbott

Test Start: 2013.07.24 @ 10:12:00

Mud and Cushion Information

Mud Type: Gel Chem	Cushion Type:	Oil API: 28 deg API
Mud Weight: 9.00 lb/gal	Cushion Length: ft	Water Salinity: ppm
Viscosity: 55.00 sec/qt	Cushion Volume: bbl	
Water Loss: 9.39 in ³	Gas Cushion Type:	
Resistivity: ohm.m	Gas Cushion Pressure: psig	
Salinity: 1800.00 ppm		
Filter Cake: 1.00 inches		

Recovery Information

Recovery Table

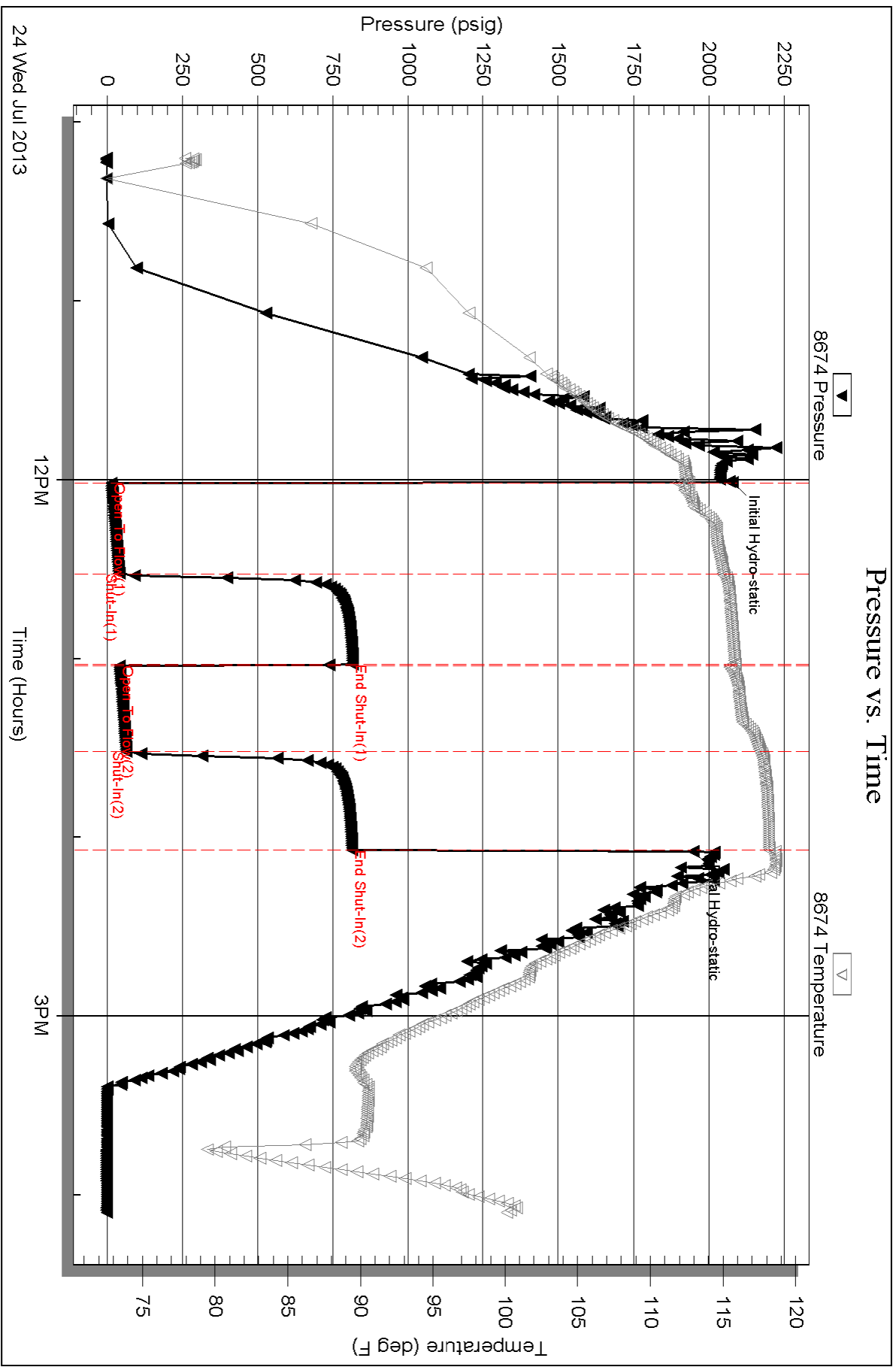
Length ft	Description	Volume bbl
62.00	OWGCM 2%oil 2%w 6%g 90%m	0.870
20.00	GOCM 6%g 7%oil 87%m	0.281
30.00	GO 4%g 96%oil	0.421

Total Length: 112.00 ft Total Volume: 1.572 bbl

Num Fluid Samples: 0 Num Gas Bombs: 0 Serial #:

Laboratory Name: Laboratory Location:

Recovery Comments: API is 32 @ 100f = 28





TRILOBITE TESTING, INC.

DRILL STEM TEST REPORT

O'Brien Resources LLC

35-16s-30w Lane Co. KS

P.o Box 6149
Shreveport LA 71136

Snider-Sharp 35 #1

Job Ticket: 49088 **DST#: 4**

ATTN: Kurt Talbott

Test Start: 2013.07.23 @ 15:52:00

GENERAL INFORMATION:

Formation: **LKC " 200 "**
 Deviated: No Whipstock: ft (KB)
 Time Tool Opened: 17:36:55
 Time Test Ended: 21:47:09
 Interval: **4201.00 ft (KB) To 4230.00 ft (KB) (TVD)**
 Total Depth: 4230.00 ft (KB) (TVD)
 Hole Diameter: 7.88 inches Hole Condition: Good
 Test Type: Conventional Bottom Hole (Reset)
 Tester: Will MacLean
 Unit No: 58
 Reference Elevations: 2862.00 ft (KB)
 2851.00 ft (CF)
 KB to GR/CF: 11.00 ft

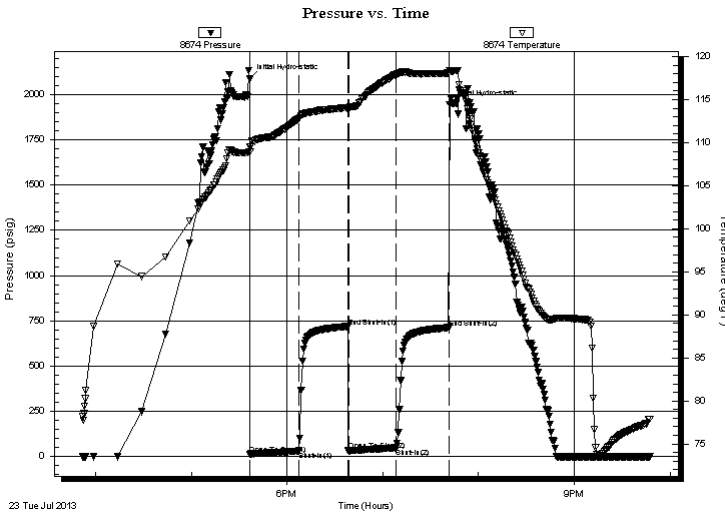
Serial #: 8674

Inside

Press @ Run Depth: 48.11 psig @ 4202.00 ft (KB) Capacity: 8000.00 psig
 Start Date: 2013.07.23 End Date: 2013.07.23 Last Calib.: 2013.07.23
 Start Time: 15:52:00 End Time: 21:47:09 Time On Btm: 2013.07.23 @ 17:36:40
 Time Off Btm: 2013.07.23 @ 19:41:55

TEST COMMENT: IF- Weak Surface Blow Built to 1 1/4"
 IS- No Blow
 FF- Weak Surface Blow Built to 1/2"
 FS- No Blow

PRESSURE SUMMARY



Time (Min.)	Pressure (psig)	Temp (deg F)	Annotation
0	2084.83	109.48	Initial Hydro-static
1	14.22	108.94	Open To Flow (1)
31	30.71	112.76	Shut-In(1)
62	718.23	114.08	End Shut-In(1)
62	32.41	114.04	Open To Flow (2)
92	48.11	117.94	Shut-In(2)
125	712.40	118.08	End Shut-In(2)
126	1942.79	118.40	Final Hydro-static

Recovery

Length (ft)	Description	Volume (bbl)
62.00	OWCM 1%oil 27%w 72%m	0.87
10.00	WOCM 16%w 38%oil 46%m	0.14
15.00	100%oil	0.21

* Recovery from multiple tests

Gas Rates

Choke (inches)	Pressure (psig)	Gas Rate (Mcf/d)



**TRILOBITE
TESTING, INC.**

DRILL STEM TEST REPORT

FLUID SUMMARY

O'Brien Resources LLC

35-16s-30w Lane Co. KS

P.o Box 6149
Shreveport LA 71136

Snider-Sharp 35 #1

Job Ticket: 49088 **DST#: 4**

ATTN: Kurt Talbott

Test Start: 2013.07.23 @ 15:52:00

Mud and Cushion Information

Mud Type: Gel Chem
Mud Weight: 9.00 lb/gal
Viscosity: 70.00 sec/qt
Water Loss: 7.97 in³
Resistivity: ohm.m
Salinity: 1900.00 ppm
Filter Cake: 1.00 inches

Cushion Type:
Cushion Length: ft
Cushion Volume: bbl
Gas Cushion Type:
Gas Cushion Pressure: psig

Oil API: 27 deg API
Water Salinity: 24000 ppm

Recovery Information

Recovery Table

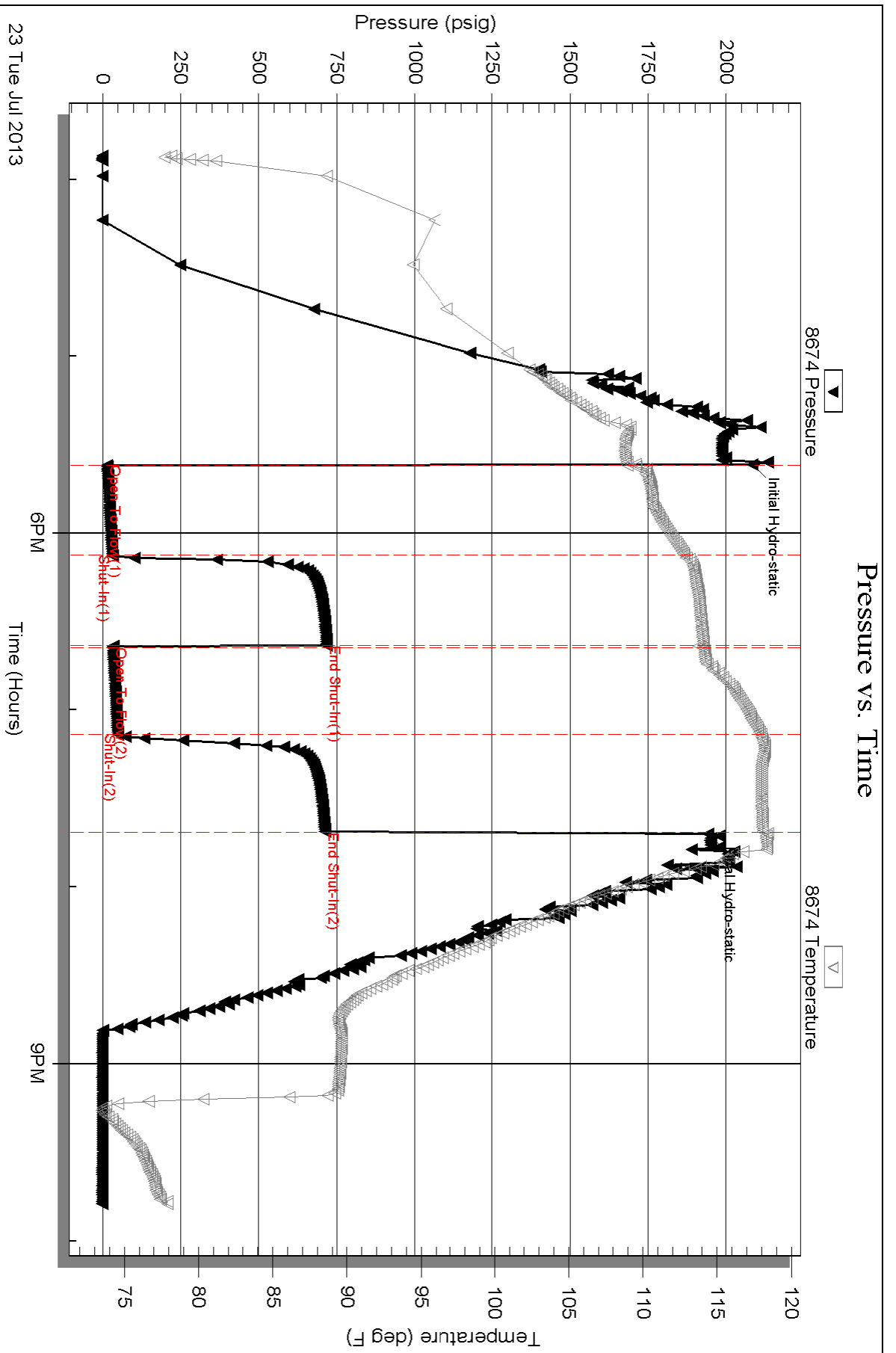
Length ft	Description	Volume bbl
62.00	OWCM 1%oil 27%w 72%m	0.870
10.00	WOCM 16%w 38%oil 46%m	0.140
15.00	100%oil	0.210

Total Length: 87.00 ft Total Volume: 1.220 bbl

Num Fluid Samples: 0 Num Gas Bombs: 0 Serial #:

Laboratory Name: Laboratory Location:

Recovery Comments: API is 29 @ 80f = 27
RW is .244 @ 78f = 24000





TRILOBITE TESTING, INC.

DRILL STEM TEST REPORT

O'Brien Resources LLC
 P.o Box 6149
 Shreveport LA 71136
 ATTN: Kurt Talbott

35-16s-30w Lane Co. KS
Snider-Sharp 35 #1
 Job Ticket: 49087 **DST#: 3**
 Test Start: 2013.07.23 @ 00:14:00

GENERAL INFORMATION:

Formation: **LKC "H-J"**
 Deviated: No Whipstock: ft (KB)
 Test Type: Conventional Bottom Hole (Reset)
 Time Tool Opened: 02:15:25 Tester: Will MacLean
 Time Test Ended: 07:08:09 Unit No: 58
 Interval: **4110.00 ft (KB) To 4195.00 ft (KB) (TVD)** Reference Elevations: 2862.00 ft (KB)
 Total Depth: 4195.00 ft (KB) (TVD) 2851.00 ft (CF)
 Hole Diameter: 7.88 inches Hole Condition: Good KB to GR/CF: 11.00 ft

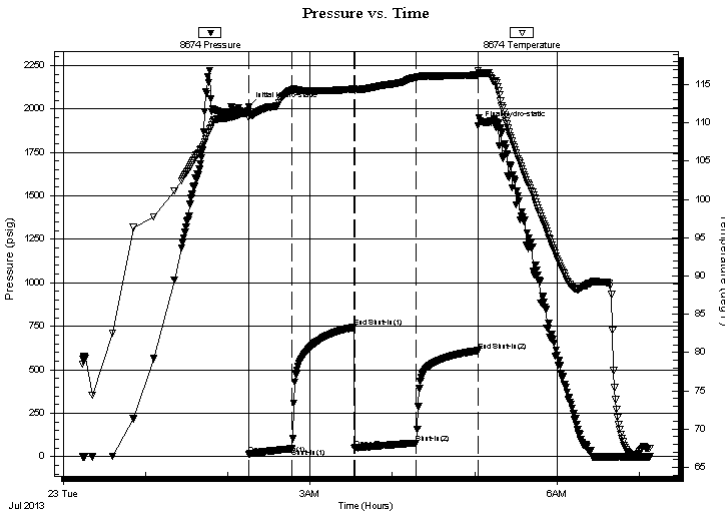
Serial #: 8674

Inside

Press @ Run Depth: 78.33 psig @ 4111.00 ft (KB) Capacity: 8000.00 psig
 Start Date: 2013.07.23 End Date: 2013.07.23 Last Calib.: 2013.07.23
 Start Time: 00:14:00 End Time: 07:08:09 Time On Btm: 2013.07.23 @ 02:15:10
 Time Off Btm: 2013.07.23 @ 05:02:24

TEST COMMENT: IF- Weak Surface Blow Built to 5"
 IS- No Blow
 FF- Weak Surface Blow Built to 3 3/4"
 FS- No Blow

PRESSURE SUMMARY



Time (Min.)	Pressure (psig)	Temp (deg F)	Annotation
0	2010.88	111.44	Initial Hydro-static
1	14.63	110.73	Open To Flow (1)
32	45.49	114.32	Shut-In(1)
77	743.78	114.42	End Shut-In(1)
78	50.66	114.40	Open To Flow (2)
122	78.33	115.95	Shut-In(2)
167	609.82	116.26	End Shut-In(2)
168	1906.00	116.87	Final Hydro-static

Recovery

Length (ft)	Description	Volume (bbl)
62.00	WCM 12%w 88%m with Skim of Oil	0.87
77.00	OCM 2%oil 98%m	1.08

* Recovery from multiple tests

Gas Rates

Choke (inches)	Pressure (psig)	Gas Rate (Mcf/d)



**TRILOBITE
TESTING, INC.**

DRILL STEM TEST REPORT

FLUID SUMMARY

O'Brien Resources LLC

35-16s-30w Lane Co. KS

P.o Box 6149
Shreveport LA 71136

Snider-Sharp 35 #1

Job Ticket: 49087 **DST#: 3**

ATTN: Kurt Talbott

Test Start: 2013.07.23 @ 00:14:00

Mud and Cushion Information

Mud Type: Gel Chem	Cushion Type:	Oil API:	deg API
Mud Weight: 9.00 lb/gal	Cushion Length: ft	Water Salinity: 23500 ppm	
Viscosity: 45.00 sec/qt	Cushion Volume: bbl		
Water Loss: 9.16 in ³	Gas Cushion Type:		
Resistivity: ohm.m	Gas Cushion Pressure: psig		
Salinity: 2800.00 ppm			
Filter Cake: 1.00 inches			

Recovery Information

Recovery Table

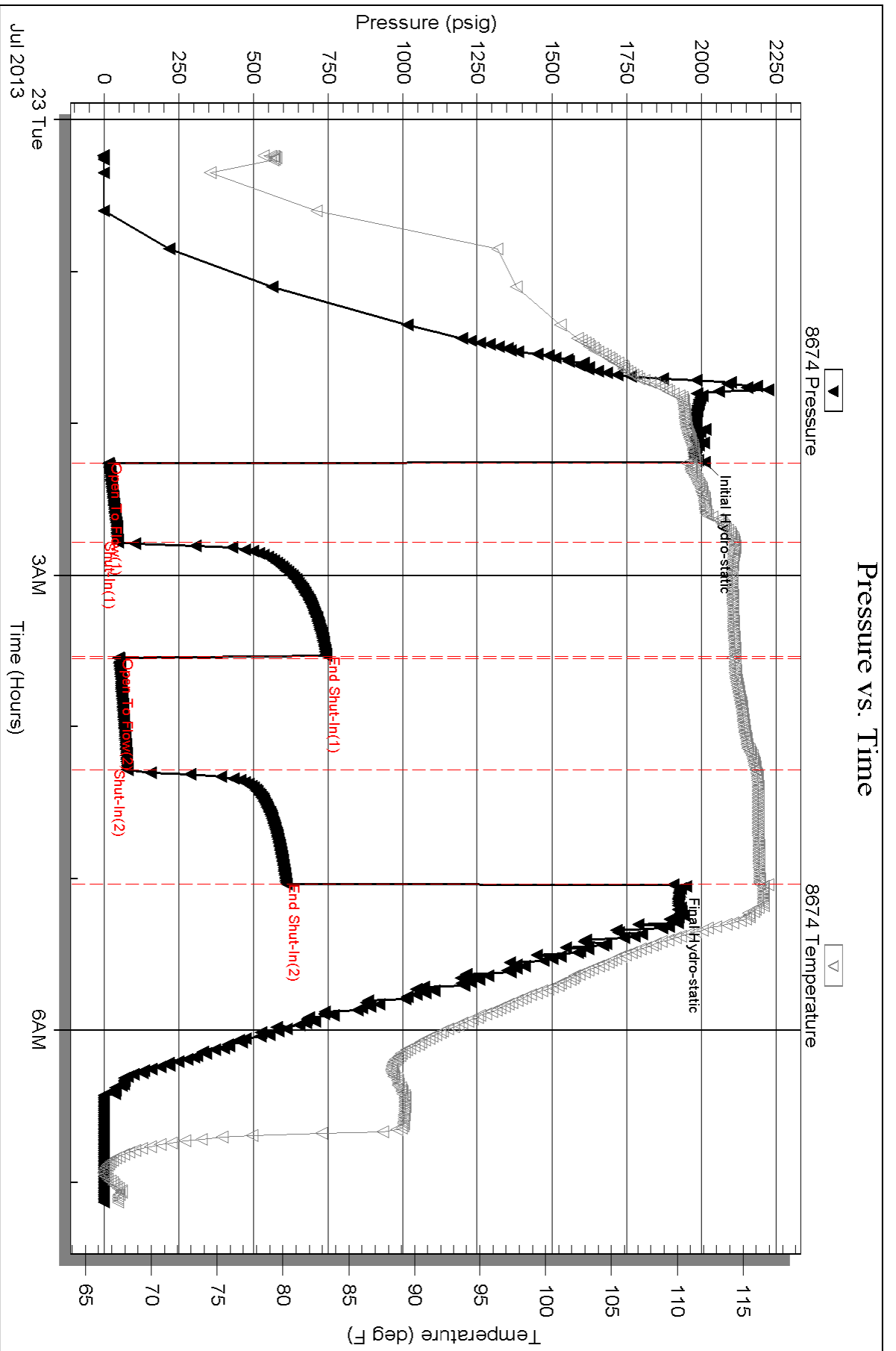
Length ft	Description	Volume bbl
62.00	WCM 12%w 88%m with Skim of Oil	0.870
77.00	OCM 2%oil 98%m	1.080

Total Length: 139.00 ft Total Volume: 1.950 bbl

Num Fluid Samples: 0 Num Gas Bombs: 0 Serial #:

Laboratory Name: Laboratory Location:

Recovery Comments: RW is .297 @ 67f = 23500





TRILOBITE TESTING, INC.

DRILL STEM TEST REPORT

O'Brien Resources LLC
 P.o Box 6149
 Shreveport LA 71136
 ATTN: Kurt Talbott

35-16s-30w Lane Co. KS

Snider-Sharp 35 #1

Job Ticket: 49086 **DST#: 2**
 Test Start: 2013.07.22 @ 01:40:00

GENERAL INFORMATION:

Formation: **LKC " B - E "**
 Deviated: No Whipstock: ft (KB)
 Time Tool Opened: 03:38:25
 Time Test Ended: 07:48:39
 Interval: **3969.00 ft (KB) To 4044.00 ft (KB) (TVD)**
 Total Depth: 4044.00 ft (KB) (TVD)
 Hole Diameter: 7.88 inches Hole Condition: Good
 Test Type: Conventional Bottom Hole (Reset)
 Tester: Will MacLean
 Unit No: 58
 Reference Elevations: 2862.00 ft (KB)
 2851.00 ft (CF)
 KB to GR/CF: 11.00 ft

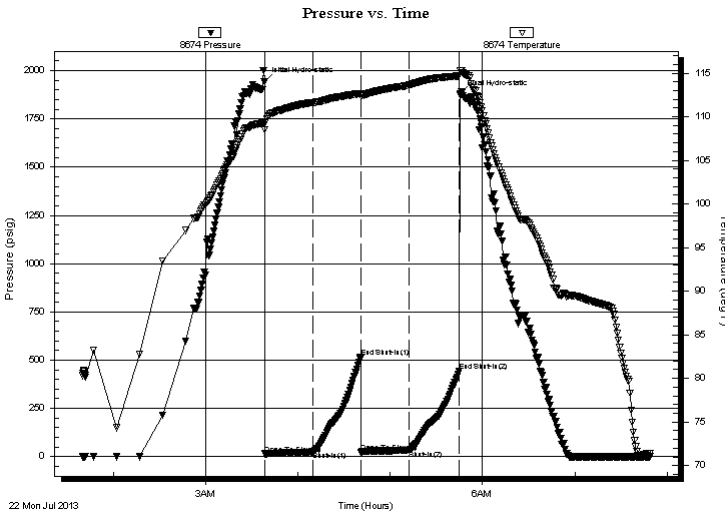
Serial #: 8674

Inside

Press @ Run Depth: 33.38 psig @ 3970.00 ft (KB) Capacity: 8000.00 psig
 Start Date: 2013.07.22 End Date: 2013.07.22 Last Calib.: 2013.07.22
 Start Time: 01:40:00 End Time: 07:48:39 Time On Btm: 2013.07.22 @ 03:38:10
 Time Off Btm: 2013.07.22 @ 05:45:25

TEST COMMENT: IF- Weak Surface Blow Built to 1 3/4"
 IS- No Blow
 FF- Weak Surface Blow Built to 1 1/2"
 FS- No Blow

PRESSURE SUMMARY



Time (Min.)	Pressure (psig)	Temp (deg F)	Annotation
0	1944.26	109.26	Initial Hydro-static
1	13.85	108.52	Open To Flow (1)
32	24.85	111.61	Shut-In(1)
63	515.02	112.64	End Shut-In(1)
63	22.77	112.44	Open To Flow (2)
95	33.38	113.63	Shut-In(2)
127	442.59	114.68	End Shut-In(2)
128	1877.92	115.23	Final Hydro-static

Recovery

Length (ft)	Description	Volume (bbl)
45.00	OCM 14%oil 86%m	0.63
5.00	100%oil	0.07

* Recovery from multiple tests

Gas Rates

Choke (inches)	Pressure (psig)	Gas Rate (Mcf/d)



**TRILOBITE
TESTING, INC.**

DRILL STEM TEST REPORT

FLUID SUMMARY

O'Brien Resources LLC

35-16s-30w Lane Co. KS

P.o Box 6149
Shreveport LA 71136

Snider-Sharp 35 #1

Job Ticket: 49086 **DST#: 2**

ATTN: Kurt Talbott

Test Start: 2013.07.22 @ 01:40:00

Mud and Cushion Information

Mud Type: Gel Chem	Cushion Type:	Oil API:	deg API
Mud Weight: 9.00 lb/gal	Cushion Length: ft	Water Salinity:	ppm
Viscosity: 55.00 sec/qt	Cushion Volume: bbl		
Water Loss: 8.77 in ³	Gas Cushion Type:		
Resistivity: ohm.m	Gas Cushion Pressure: psig		
Salinity: 2500.00 ppm			
Filter Cake: 1.00 inches			

Recovery Information

Recovery Table

Length ft	Description	Volume bbl
45.00	OCM 14%oil 86%m	0.631
5.00	100%oil	0.070

Total Length: 50.00 ft Total Volume: 0.701 bbl

Num Fluid Samples: 0

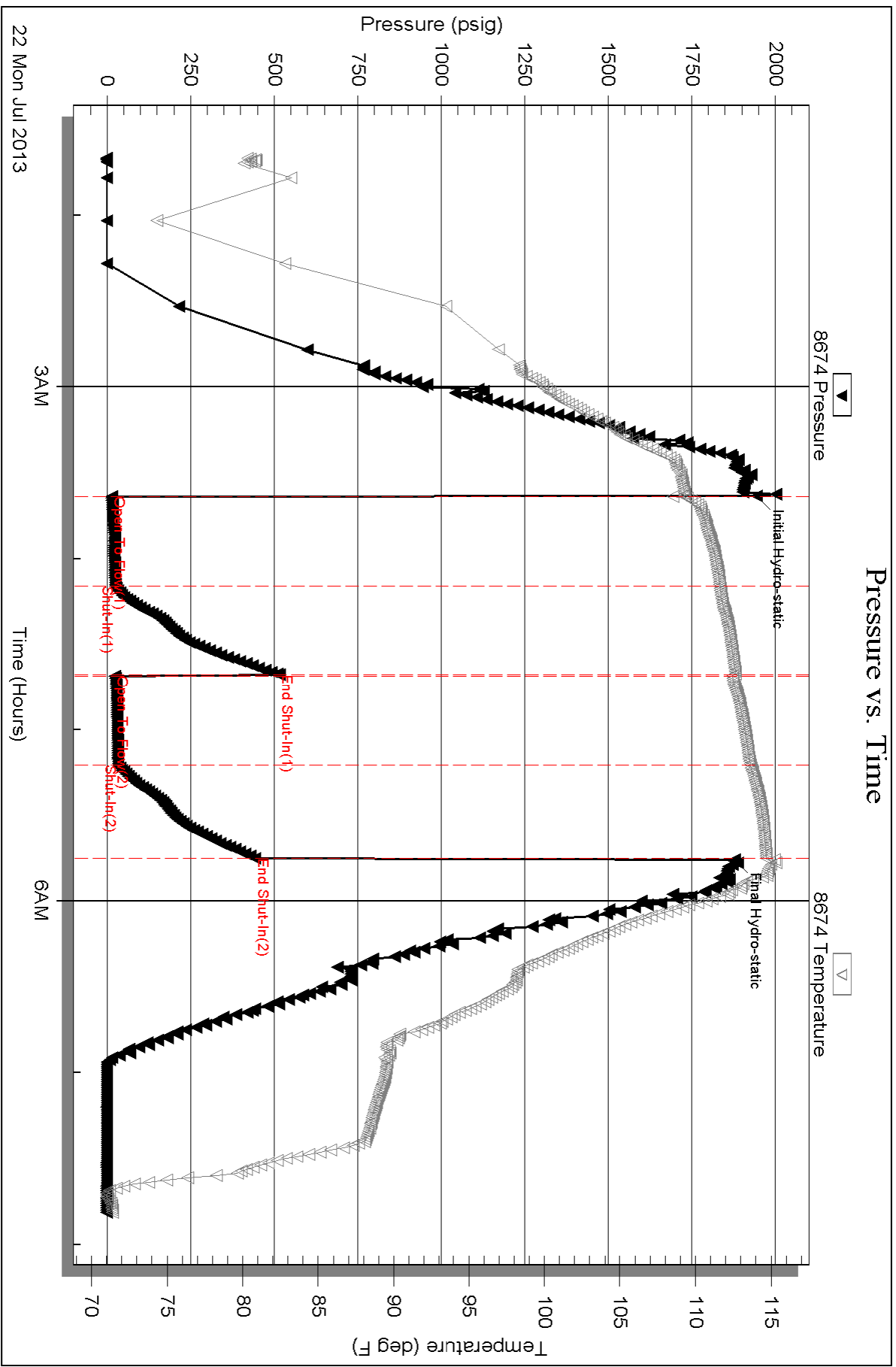
Num Gas Bombs: 0

Serial #:

Laboratory Name:

Laboratory Location:

Recovery Comments:





**TRILOBITE
TESTING, INC.**

DRILL STEM TEST REPORT

FLUID SUMMARY

O'Brien Resources LLC

35-16s-30w Lane Co. KS

P.o Box 6149
Shreveport LA 71136

Snider-Sharp 35 #1

Job Ticket: 49085 **DST#: 1**

ATTN: Kurt Talbott

Test Start: 2013.07.21 @ 05:32:00

Mud and Cushion Information

Mud Type: Gel Chem	Cushion Type:	Oil API:	deg API
Mud Weight: 9.00 lb/gal	Cushion Length: ft	Water Salinity:	ppm
Viscosity: 40.00 sec/qt	Cushion Volume: bbl		
Water Loss: 7.97 in ³	Gas Cushion Type:		
Resistivity: ohm.m	Gas Cushion Pressure: psig		
Salinity: 2200.00 ppm			
Filter Cake: 1.00 inches			

Recovery Information

Recovery Table

Length ft	Description	Volume bbl
248.00	WCM 2%w 98%m with Skim of Oil on Top	3.479
186.00	OCM 2%oil 98%m	2.609
82.00	OCM 9%oil 91%m	1.150

Total Length: 516.00 ft Total Volume: 7.238 bbl

Num Fluid Samples: 0 Num Gas Bombs: 0 Serial #:

Laboratory Name: Laboratory Location:

Recovery Comments: Chased Tool about 8' to Bottom

