



DRILL STEM TEST REPORT

Prepared For: **L B Exloration Inc.**

2135 2nd Road Holyrood
Kansas 67450

ATTN: Steven Peterman

Jezek #2

21-16s-10w-Ellsworth

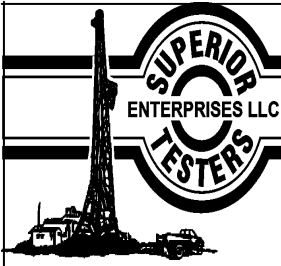
Start Date: 2013.02.19 @ 06:05:00

End Date: 2013.02.19 @ 12:34:30

Job Ticket #: 17425 DST #: 4

Superior Testers Enterprises LLC
PO Box 138 Great Bend KS 67530
1-800-792-6902

Printed: 2013.02.20 @ 00:53:42



DRILL STEM TEST REPORT

L B Exloration Inc.

21-16s-10w-Ellsworth

2135 2nd Road Holyrood
Kansas 67450

Jezeq #2

Job Ticket: 17425

DST#: 4

ATTN: Steven Peterman

Test Start: 2013.02.19 @ 06:05:00

GENERAL INFORMATION:

Formation: **Arbuckle**

Deviated: No Whipstock: ft (KB)

Time Tool Opened: 07:34:30

Time Test Ended: 12:34:30

Test Type: Conventional Bottom Hole (Initial)

Tester: Dustin Ellis

Unit No: 3315-Great Bend-80

Interval: 3350.00 ft (KB) To 3363.00 ft (KB) (TVD)

Reference Elevations: 1882.00 ft (KB)

Total Depth: 3363.00 ft (KB) (TVD)

1871.00 ft (CF)

Hole Diameter: 7.88 inches Hole Condition: Fair

KB to GR/CF: 11.00 ft

Serial #: 6839 Outside

Press@RunDepth: 668.03 psia @ 3360.00 ft (KB)

Capacity: 5000.00 psia

Start Date: 2013.02.19

End Date: 2013.02.19

Last Calib.: 2013.02.20

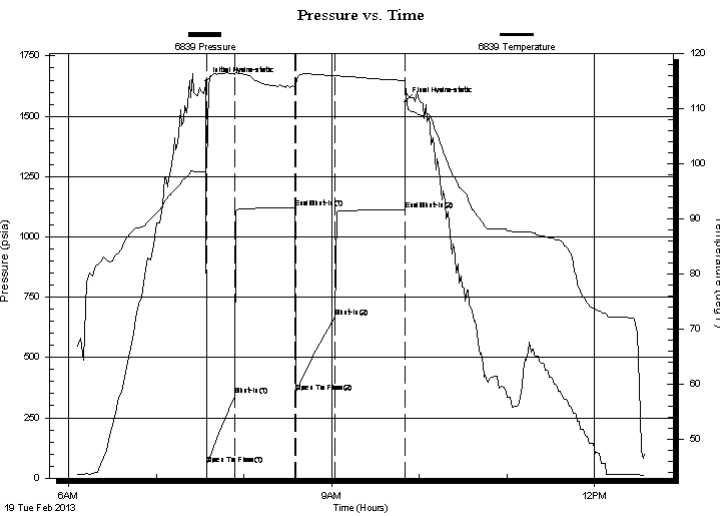
Start Time: 06:05:00

End Time: 12:34:30

Time On Btm: 2013.02.19 @ 07:34:00

Time Off Btm: 2013.02.19 @ 09:50:30

TEST COMMENT: 1st Open 20 minutes Strong blow blew bottom bucket 3.5 minutes.
1st Shut in 40 minutes No blow back
2nd Open 30 minutes Strong blow blew bottom bucket 3 minutes.
2nd Shut in 45 minutes No blow back.



PRESSURE SUMMARY

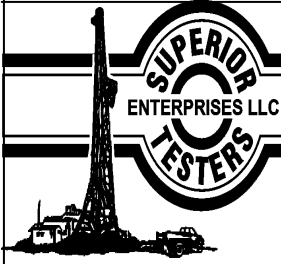
Time (Min.)	Pressure (psia)	Temp (deg F)	Annotation
0	1644.92	98.92	Initial Hydro-static
1	58.40	99.37	Open To Flow (1)
20	342.15	116.22	Shut-In(1)
61	1120.63	113.89	End Shut-In(1)
62	355.10	114.18	Open To Flow (2)
89	668.03	115.89	Shut-In(2)
136	1113.53	115.08	End Shut-In(2)
137	1559.00	114.68	Final Hydro-static

Recovery

Length (ft)	Description	Volume (bbl)
10.00	Clean oil 100%	0.14
794.00	Oil cut w ater 30%oil 70%w ater	11.14
610.00	Water 100%	8.56
0.00	Chlorides 52,000	0.00

Gas Rates

	Choke (inches)	Pressure (psia)	Gas Rate (Mcf/d)



DRILL STEM TEST REPORT

L B Exloration Inc.

21-16s-10w-Ellsworth

2135 2nd Road Holyrood
Kansas 67450

Jezeq #2

Job Ticket: 17425

DST#: 4

ATTN: Steven Peterman

Test Start: 2013.02.19 @ 06:05:00

GENERAL INFORMATION:

Formation: **Arbuckle**

Deviated: No Whipstock: ft (KB)

Time Tool Opened: 07:34:30

Time Test Ended: 12:34:30

Test Type: Conventional Bottom Hole (Initial)

Tester: Dustin Ellis

Unit No: 3315-Great Bend-80

Interval: 3350.00 ft (KB) To 3363.00 ft (KB) (TVD)

Reference Elevations: 1882.00 ft (KB)

Total Depth: 3363.00 ft (KB) (TVD)

1871.00 ft (CF)

Hole Diameter: 7.88 inches Hole Condition: Fair

KB to GR/CF: 11.00 ft

Serial #: 8524 Inside

Press@RunDepth: 1112.92 psia @ 3359.00 ft (KB)

Capacity: 5000.00 psia

Start Date: 2013.02.19

End Date: 2013.02.19

Last Calib.: 2013.02.20

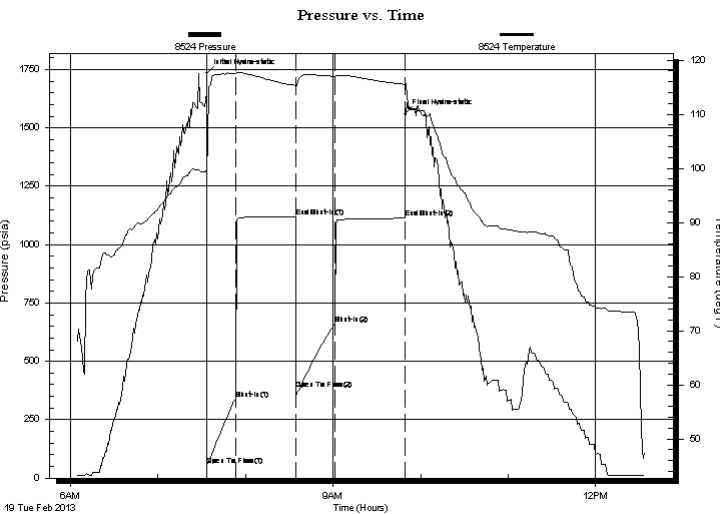
Start Time: 06:05:00

End Time: 12:33:54

Time On Btm: 2013.02.19 @ 07:33:43

Time Off Btm: 2013.02.19 @ 09:49:36

TEST COMMENT: 1st Open 20 minutes Strong blow blew bottom bucket 3.5 minutes.
1st Shut in 40 minutes No blow back
2nd Open 30 minutes Strong blow blew bottom bucket 3 minutes.
2nd Shut in 45 minutes No blow back.



PRESSURE SUMMARY

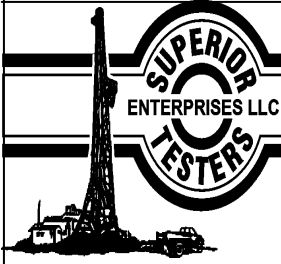
Time (Min.)	Pressure (psia)	Temp (deg F)	Annotation
0	1733.97	100.25	Initial Hydro-static
1	56.81	99.61	Open To Flow (1)
20	338.70	117.46	Shut-In(1)
61	1120.17	115.31	End Shut-In(1)
61	380.27	114.97	Open To Flow (2)
88	661.06	117.00	Shut-In(2)
136	1112.92	115.55	End Shut-In(2)
136	1559.74	115.72	Final Hydro-static

Recovery

Length (ft)	Description	Volume (bbl)
10.00	Clean oil 100%	0.14
794.00	Oil cut w ater 30%oil 70%w ater	11.14
610.00	Water 100%	8.56
0.00	Chlorides 52,000	0.00

Gas Rates

Choke (inches)	Pressure (psia)	Gas Rate (Mcf/d)



DRILL STEM TEST REPORT

TOOL DIAGRAM

L B Exloration Inc.

21-16s-10w-Ellsworth

2135 2nd Road Holyrood
Kansas 67450

Jezek #2

Job Ticket: 17425

DST#: 4

ATTN: Steven Peterman

Test Start: 2013.02.19 @ 06:05:00

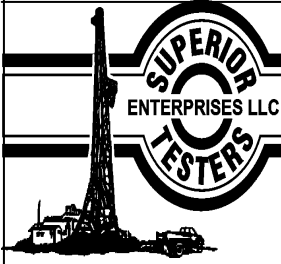
Tool Information

Drill Pipe:	Length: 3352.00 ft	Diameter: 3.80 inches	Volume: 47.02 bbl	Tool Weight: 2000.00 lb
Heavy Wt. Pipe:	Length: 0.00 ft	Diameter: 0.00 inches	Volume: 0.00 bbl	Weight set on Packer: 20000.00 lb
Drill Collar:	Length: 0.00 ft	Diameter: 0.00 inches	Volume: 0.00 bbl	Weight to Pull Loose: 62000.00 lb
			<u>Total Volume: 47.02 bbl</u>	Tool Chased 0.00 ft
Drill Pipe Above KB:	22.00 ft			String Weight: Initial 49000.00 lb
Depth to Top Packer:	3350.00 ft			Final 52000.0 lb
Depth to Bottom Packer:	ft			
Interval between Packers:	13.00 ft			
Tool Length:	33.00 ft			
Number of Packers:	2	Diameter: 6.75 inches		
Tool Comments:				

Tool Description	Length (ft)	Serial No.	Position	Depth (ft)	Accum. Lengths
------------------	-------------	------------	----------	------------	----------------

Shut-In Tool	5.00			3335.00	
Hydraulic Tool	5.00			3340.00	
Packer	5.00			3345.00	20.00 Bottom Of Top Packer
Packer	5.00			3350.00	
Anchor	8.00			3358.00	
Recorder	1.00	8524	Inside	3359.00	
Recorder	1.00	6839	Outside	3360.00	
Bullnose	3.00			3363.00	13.00 Bottom Packers & Anchor

Total Tool Length: 33.00



DRILL STEM TEST REPORT

FLUID SUMMARY

L B Exloration Inc.

21-16s-10w-Ellsworth

2135 2nd Road Holyrood
Kansas 67450

Jezeq #2

Job Ticket: 17425

DST#: 4

ATTN: Steven Peterman

Test Start: 2013.02.19 @ 06:05:00

Mud and Cushion Information

Mud Type: Gel Chem

Cushion Type:

Oil API:

deg API

Mud Weight: 9.00 lb/gal

Cushion Length:

ft

Water Salinity:

ppm

Viscosity: 44.00 sec/qt

Cushion Volume:

bbbl

Water Loss: 8.80 in³

Gas Cushion Type:

Resistivity: 0.40 ohm.m

Gas Cushion Pressure:

psia

Salinity: 4000.00 ppm

Filter Cake: 1.00 inches

Recovery Information

Recovery Table

Length ft	Description	Volume bbl
10.00	Clean oil 100%	0.140
794.00	Oil cut w ater 30%oil 70%w ater	11.138
610.00	Water 100%	8.557
0.00	Chlorides 52,000	0.000

Total Length: 1414.00 ft

Total Volume: 19.835 bbl

Num Fluid Samples: 0

Num Gas Bombs: 0

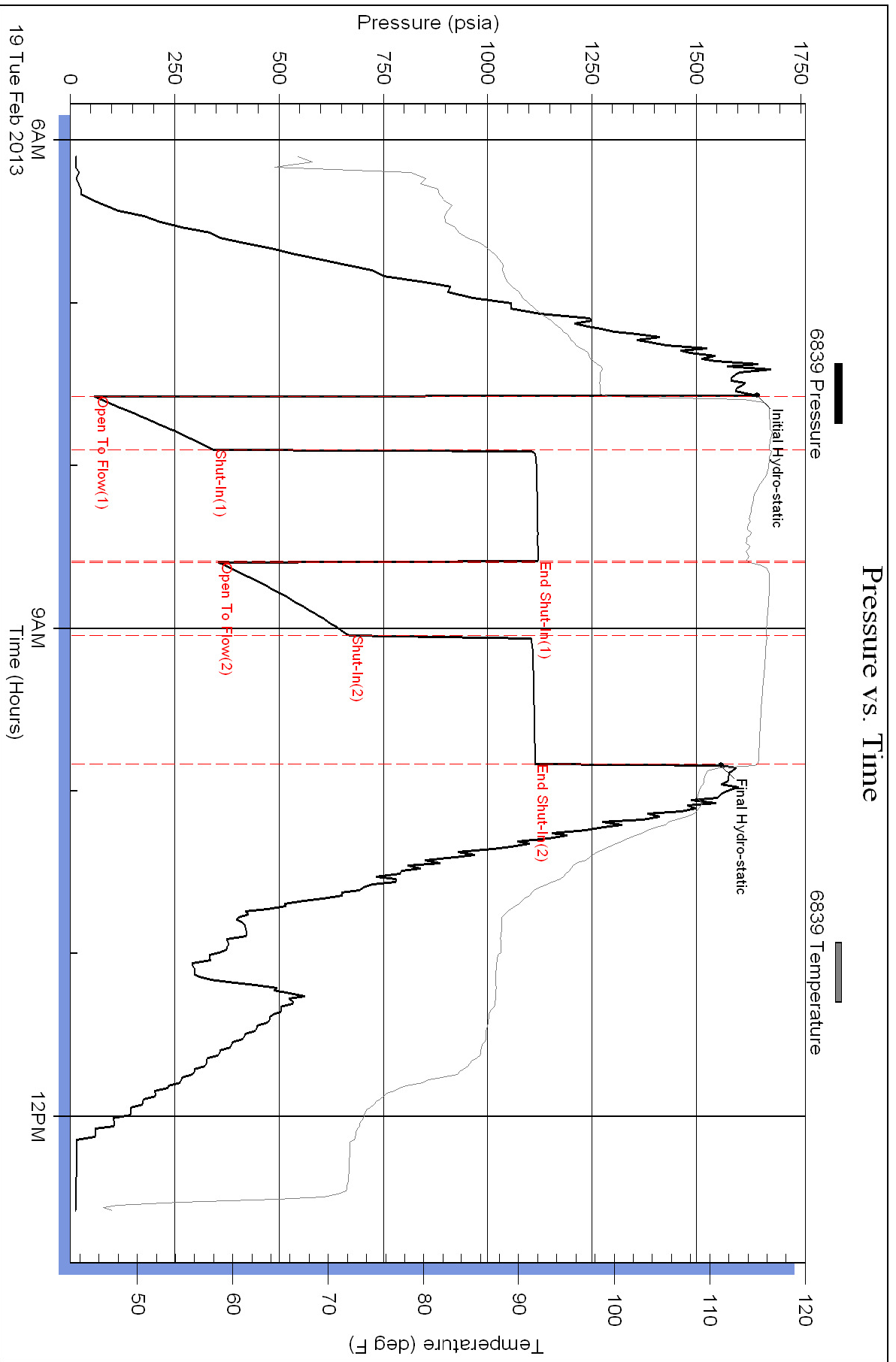
Serial #:

Laboratory Name:

Laboratory Location:

Recovery Comments:

Pressure vs. Time



Pressure vs. Time

