



DRILL STEM TEST REPORT

Prepared For: **Younger Energy Company**

9415 East Harry Street
Suite 403 Building 400
Wichita, Kansas 67207+5083

ATTN: Keith Reavis

Kelly #1-33

33/21S/15W/Pawnee

Start Date: 2013.06.20 @ 11:35:00

End Date: 2013.06.20 @ 16:45:30

Job Ticket #: 18131 DST #: 1

Superior Testers Enterprises LLC
PO Box 138 Great Bend KS 67530
1-800-792-6902

Printed: 2013.06.20 @ 17:04:15



DRILL STEM TEST REPORT

Younger Energy Company

33/21S/15W/Pawnee

9415 East Harry Street
Suite 403 Building 400
Wichita, Kansas 67207+5083
ATTN: Keith Reavis

Kelly #1-33

Job Ticket: 18131

DST#: 1

Test Start: 2013.06.20 @ 11:35:00

GENERAL INFORMATION:

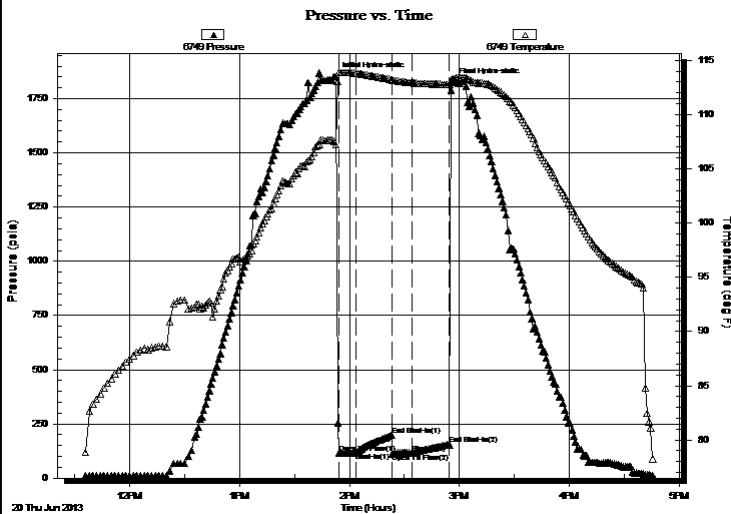
Formation: **Conglomerate**
 Deviated: No Whipstock: ft (KB)
 Time Tool Opened: 13:54:30
 Time Test Ended: 16:45:30
 Interval: **3735.00 ft (KB) To 3837.00 ft (KB) (TVD)**
 Total Depth: 3837.00 ft (KB) (TVD)
 Hole Diameter: 7.80 inches Hole Condition: Poor
 Test Type: Conventional Bottom Hole (Initial)
 Tester: Ken Swinney
 Unit No: 3325 Great Bend/56
 Reference Elevations: 1985.00 ft (KB)
 1973.00 ft (CF)
 KB to GR/CF: 12.00 ft

Serial #: 6749

Inside

Press @ RunDepth: 115.48 psia @ 3833.08 ft (KB) Capacity: 5000.00 psia
 Start Date: 2013.06.20 End Date: 2013.06.20 Last Calib.: 2013.06.20
 Start Time: 11:35:00 End Time: 16:45:30 Time On Btm: 2013.06.20 @ 13:52:30
 Time Off Btm: 2013.06.20 @ 14:56:00

TEST COMMENT: 1ST Open 10 Mintues/20 foot slide/6 inch blow after slide/Weak blow built to 7 inches
 1ST Shut In 20 Mintues/No blow back
 2ND Open 10 Minutes/Weak blow/blow built to 1 1/4 inch
 2ND Shut In 20 Mintues/No blow back



PRESSURE SUMMARY

Time (Min.)	Pressure (psia)	Temp (deg F)	Annotation
0	1853.49	107.25	Initial Hydro-static
2	115.92	113.88	Open To Flow (1)
11	116.98	113.81	Shut-In(1)
31	197.75	113.23	End Shut-In(1)
31	112.26	113.19	Open To Flow (2)
42	115.48	112.94	Shut-In(2)
63	154.22	112.79	End Shut-In(2)
64	1824.63	113.24	Final Hydro-static

Recovery

Length (ft)	Description	Volume (bbl)
70.00	Mud 100%	0.98

Gas Rates

	Choke (inches)	Pressure (psia)	Gas Rate (Mcf/d)



DRILL STEM TEST REPORT

Younger Energy Company

33/21S/15W/Pawnee

9415 East Harry Street
 Suite 403 Building 400
 Wichita, Kansas 67207+5083
 ATTN: Keith Reavis

Kelly #1-33

Job Ticket: 18131

DST#: 1

Test Start: 2013.06.20 @ 11:35:00

GENERAL INFORMATION:

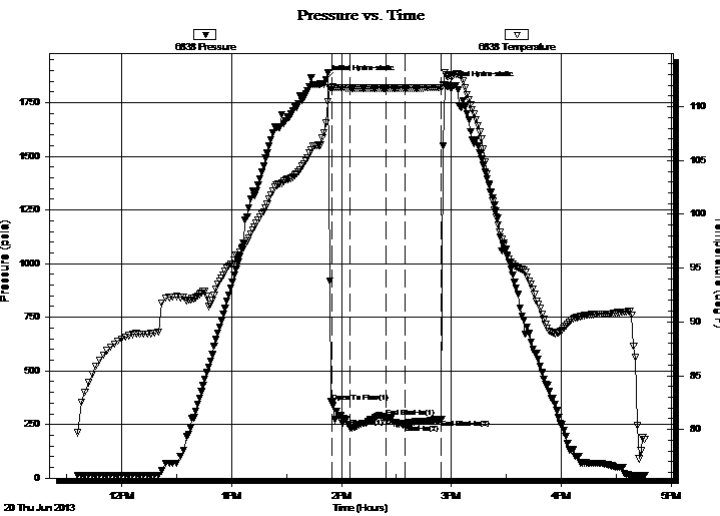
Formation: **Conglomerate**
 Deviated: No Whipstock: ft (KB)
 Time Tool Opened: 13:54:30
 Time Test Ended: 16:45:30
 Interval: **3735.00 ft (KB) To 3837.00 ft (KB) (TVD)**
 Total Depth: 3837.00 ft (KB) (TVD)
 Hole Diameter: 7.80 inches Hole Condition: Poor
 Test Type: Conventional Bottom Hole (Initial)
 Tester: Ken Swinney
 Unit No: 3325 Great Bend/56
 Reference Elevations: 1985.00 ft (KB)
 1973.00 ft (CF)
 KB to GR/CF: 12.00 ft

Serial #: 6838

Outside

Press @ Run Depth: 273.18 psia @ 3834.08 ft (KB) Capacity: 5000.00 psia
 Start Date: 2013.06.20 End Date: 2013.06.20 Last Calib.: 2013.06.20
 Start Time: 11:35:00 End Time: 16:46:00 Time On Btm: 2013.06.20 @ 13:51:30
 Time Off Btm: 2013.06.20 @ 14:57:00

TEST COMMENT: 1ST Open 10 Mintues/20 foot slide/6 inch blow after slide/Weak blow built to 7 inches
 1ST Shut In 20 Mintues/No blow back
 2ND Open 10 Minutes/Weak blow/blow built to 1 1/4 inch
 2ND Shut In 20 Mintues/No blow back



PRESSURE SUMMARY

Time (Min.)	Pressure (psia)	Temp (deg F)	Annotation
0	1856.81	108.47	Initial Hydro-static
4	351.94	111.81	Open To Flow (1)
13	236.87	111.72	Shut-In(1)
33	282.59	111.73	End Shut-In(1)
33	284.29	111.73	Open To Flow (2)
43	249.39	111.72	Shut-In(2)
63	273.18	111.78	End Shut-In(2)
66	1830.24	112.93	Final Hydro-static

Recovery

Length (ft)	Description	Volume (bbl)
70.00	Mud 100%	0.98

Gas Rates

Choke (inches)	Pressure (psia)	Gas Rate (Mcf/d)



DRILL STEM TEST REPORT

TOOL DIAGRAM

Younger Energy Company

33/21S/15W/Pawnee

9415 East Harry Street
 Suite 403 Building 400
 Wichita, Kansas 67207+5083
 ATTN: Keith Reavis

Kelly #1-33

Job Ticket: 18131

DST#: 1

Test Start: 2013.06.20 @ 11:35:00

Tool Information

Drill Pipe:	Length: 3718.00 ft	Diameter: 3.80 inches	Volume: 52.15 bbl	Tool Weight: 2000.00 lb
Heavy Wt. Pipe:	Length: 0.00 ft	Diameter: 0.00 inches	Volume: 0.00 bbl	Weight set on Packer: 20000.00 lb
Drill Collar:	Length: 0.00 ft	Diameter: 0.00 inches	Volume: 0.00 bbl	Weight to Pull Loose: 80000.00 lb
			<u>Total Volume: 52.15 bbl</u>	Tool Chased 20.00 ft
Drill Pipe Above KB:	10.00 ft			String Weight: Initial 51000.00 lb
Depth to Top Packer:	3735.00 ft			Final 51000.00 lb
Depth to Bottom Packer:	ft			
Interval between Packers:	102.08 ft			
Tool Length:	129.08 ft			
Number of Packers:	2	Diameter: 6.75 inches		

Tool Comments:

Tool Description	Length (ft)	Serial No.	Position	Depth (ft)	Accum. Lengths
Shut In Tool	5.00			3713.00	
Hydraulic Tool	5.00			3718.00	
Jars	5.00			3723.00	
Safety Joint	2.00			3725.00	
Packer	5.00			3730.00	27.00 Bottom Of Top Packer
Packer	5.00			3735.00	
Perforations	6.00			3741.00	
Change Over Sub	0.75			3741.75	
Drill Pipe	61.58			3803.33	
Change Over Sub	0.75			3804.08	
Anchor	28.00			3832.08	
Recorder	1.00	6749	Inside	3833.08	
Recorder	1.00	6838	Outside	3834.08	
Bullnose	3.00			3837.08	102.08 Bottom Packers & Anchor

Total Tool Length: 129.08



DRILL STEM TEST REPORT

FLUID SUMMARY

Younger Energy Company

33/21S/15W/Pawnee

9415 East Harry Street
 Suite 403 Building 400
 Wichita, Kansas 67207+5083
 ATTN: Keith Reavis

Kelly #1-33

Job Ticket: 18131

DST#: 1

Test Start: 2013.06.20 @ 11:35:00

Mud and Cushion Information

Mud Type: Gel Chem
 Mud Weight: 9.00 lb/gal
 Viscosity: 61.00 sec/qt
 Water Loss: 7.20 in³
 Resistivity: ohm.m
 Salinity: 3900.00 ppm
 Filter Cake: 1.00 inches

Cushion Type:
 Cushion Length: ft
 Cushion Volume: bbl
 Gas Cushion Type:
 Gas Cushion Pressure: psia

Oil API: deg API
 Water Salinity: ppm

Recovery Information

Recovery Table

Length ft	Description	Volume bbl
70.00	Mud 100%	0.982

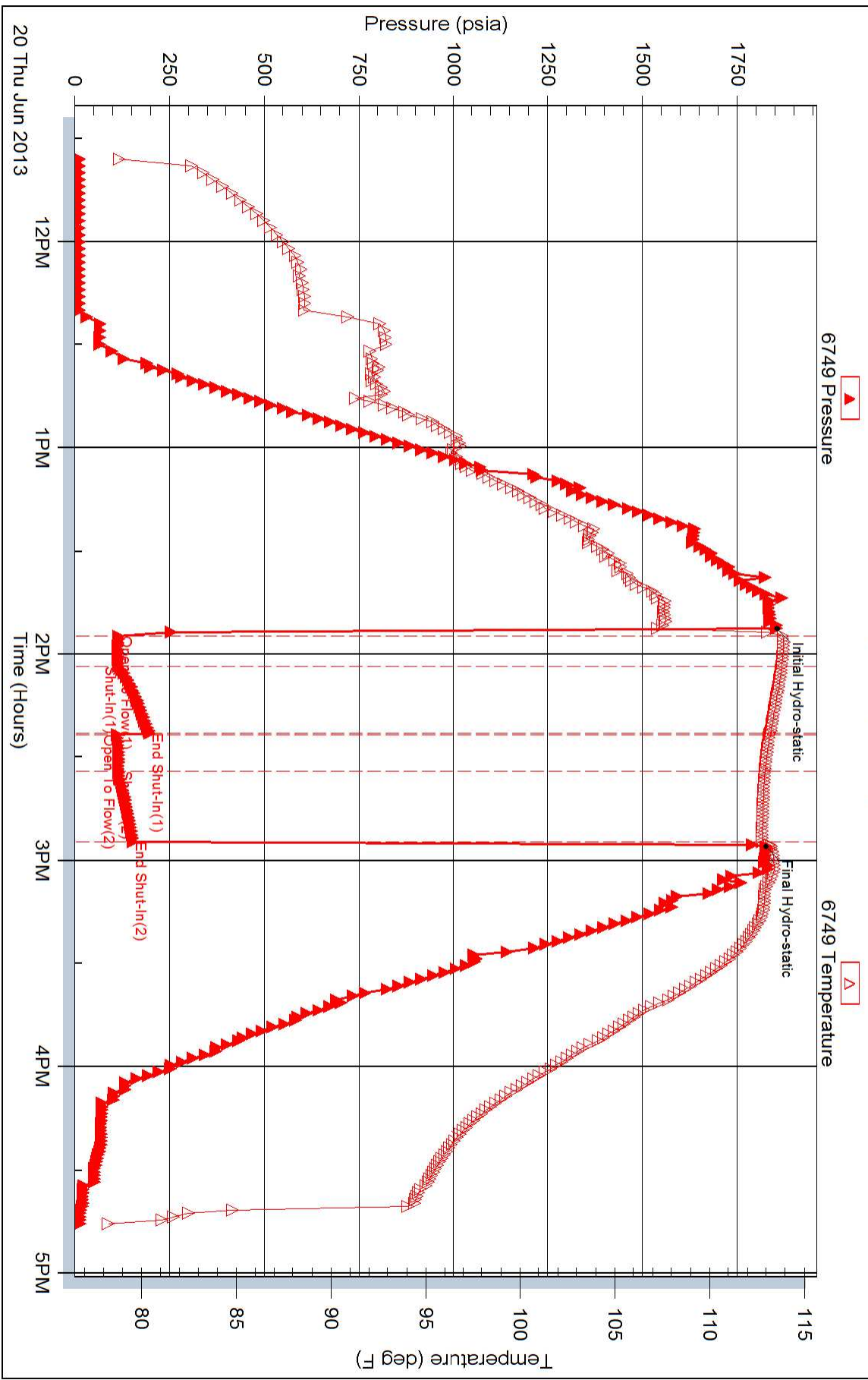
Total Length: 70.00 ft Total Volume: 0.982 bbl

Num Fluid Samples: 0 Num Gas Bombs: 0 Serial #:

Laboratory Name: Laboratory Location:

Recovery Comments:

Pressure vs. Time



Pressure vs. Time

