



**TRILOBITE
TESTING, INC.**

DRILL STEM TEST REPORT

Castelli Exploration
6908 NW 112th
Oklahoma City, OK 73112
ATTN: Rick Popp

25-33S-16W Comanche

Charlie Brown 1-25

Job Ticket: 50987

DST#: 3

Test Start: 2013.06.19 @ 04:34:41

GENERAL INFORMATION:

Formation: **Mississippi**
 Deviated: No Whipstock: ft (KB)
 Time Tool Opened: 06:55:11
 Time Test Ended: 13:14:41
 Interval: **5045.00 ft (KB) To 5090.00 ft (KB) (TVD)**
 Total Depth: 5090.00 ft (KB) (TVD)
 Hole Diameter: 7.88 inches Hole Condition: Good
 Test Type: Conventional Bottom Hole (Reset)
 Tester: Leal Cason
 Unit No: 45
 Reference Elevations: 1769.00 ft (KB)
 1756.00 ft (CF)
 KB to GR/CF: 13.00 ft

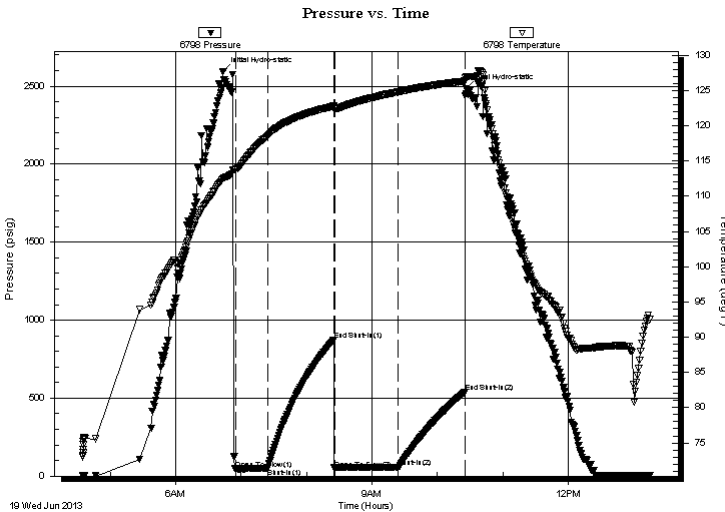
Serial #: 6798

Inside

Press @ Run Depth: 56.97 psig @ 5046.00 ft (KB) Capacity: 8000.00 psig
 Start Date: 2013.06.19 End Date: 2013.06.19 Last Calib.: 2013.06.19
 Start Time: 04:34:42 End Time: 13:14:41 Time On Btm: 2013.06.19 @ 06:43:26
 Time Off Btm: 2013.06.19 @ 10:26:11

TEST COMMENT: IF: Strong Blow , BOB in 30 seconds
 IS: No Blow Back
 FF: Strong Blow , BOB in 30 seconds
 FS: No Blow Back

PRESSURE SUMMARY



Time (Min.)	Pressure (psig)	Temp (deg F)	Annotation
0	2595.59	112.49	Initial Hydro-static
12	45.76	113.78	Open To Flow (1)
41	50.59	118.58	Shut-In(1)
102	871.90	122.80	End Shut-In(1)
103	45.88	122.44	Open To Flow (2)
161	56.97	124.80	Shut-In(2)
222	538.32	126.35	End Shut-In(2)
223	2482.47	126.97	Final Hydro-static

Recovery

Length (ft)	Description	Volume (bbl)
0.00	1054 GIP	0.00
70.00	GCM 5%G 95%M	0.34

* Recovery from multiple tests

Gas Rates

Choke (inches)	Pressure (psig)	Gas Rate (Mcf/d)



**TRILOBITE
TESTING, INC.**

DRILL STEM TEST REPORT

FLUID SUMMARY

Castelli Exploration
6908 NW 112th
Oklahoma City, OK 73112
ATTN: Rick Popp

25-33S-16W Comanche
Charlie Brown 1-25
Job Ticket: 50987 **DST#: 3**
Test Start: 2013.06.19 @ 04:34:41

Mud and Cushion Information

Mud Type: Gel Chem	Cushion Type:	Oil API:	deg API
Mud Weight: 9.00 lb/gal	Cushion Length: ft	Water Salinity:	ppm
Viscosity: 45.00 sec/qt	Cushion Volume: bbl		
Water Loss: 9.59 in ³	Gas Cushion Type:		
Resistivity: ohm.m	Gas Cushion Pressure: psig		
Salinity: 6000.00 ppm			
Filter Cake: 0.02 inches			

Recovery Information

Recovery Table

Length ft	Description	Volume bbl
0.00	1054 GIP	0.000
70.00	GCM 5%G 95%M	0.344

Total Length: 70.00 ft Total Volume: 0.344 bbl
 Num Fluid Samples: 0 Num Gas Bombs: 0 Serial #:
 Laboratory Name: Laboratory Location:
 Recovery Comments:

