



**TRILOBITE TESTING, INC.**

# DRILL STEM TEST REPORT

Shakespeare Oil Co, Inc

**23-13s-31w**

202 W Main Street  
Salem, IL 62881

**Zerr Trust #4-23**

ATTN: Tim Priest

Job Ticket: 53321

**DST#: 3**

Test Start: 2013.07.17 @ 03:55:00

## GENERAL INFORMATION:

Formation: **Lkc "I"**

Deviated: No Whipstock: ft (KB)

Time Tool Opened: 06:25:30

Time Test Ended: 11:25:50

Test Type: Conventional Bottom Hole (Reset)

Tester: Cornelio Landa III (

Unit No: 62

**Interval: 4125.00 ft (KB) To 4156.00 ft (KB) (TVD)**

Reference Elevations: 2880.00 ft (KB)

Total Depth: 4156.00 ft (KB) (TVD)

2870.00 ft (CF)

Hole Diameter: 7.88 inches Hole Condition: Good

KB to GR/CF: 10.00 ft

**Serial #: 6751 Outside**

Press @ Run Depth: 28.49 psig @ 4130.00 ft (KB)

Capacity: 8000.00 psig

Start Date: 2013.07.17

End Date:

2013.07.17

Last Calib.: 2013.07.17

Start Time: 03:55:05

End Time:

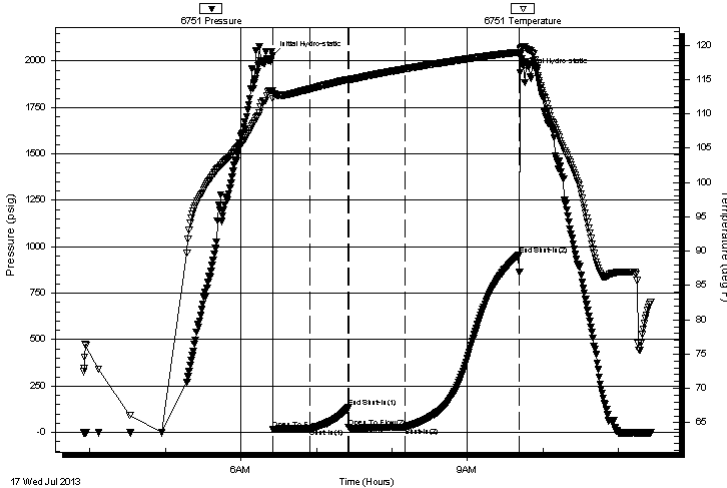
11:25:50

Time On Btm: 2013.07.17 @ 06:25:20

Time Off Btm: 2013.07.17 @ 09:41:50

**TEST COMMENT:** IF: 3 in. of blow  
IS: No return  
FF: 3 in. of blow  
FS: No return

Pressure vs. Time



## PRESSURE SUMMARY

Time (Min.)	Pressure (psig)	Temp (deg F)	Annotation
0	2030.88	113.36	Initial Hydro-static
1	15.48	112.23	Open To Flow (1)
30	19.87	113.65	Shut-In(1)
60	133.06	115.02	End Shut-In(1)
61	26.28	114.94	Open To Flow (2)
105	28.49	116.54	Shut-In(2)
196	954.06	118.98	End Shut-In(2)
197	1937.16	119.50	Final Hydro-static

## Recovery

Length (ft)	Description	Volume (bbl)
59.00	Gom 10g 30o 60m	0.29
0.00	59 GIP	0.00

\* Recovery from multiple tests

## Gas Rates

	Choke (inches)	Pressure (psig)	Gas Rate (Mcf/d)



**TRILOBITE  
TESTING, INC.**

# DRILL STEM TEST REPORT

**FLUID SUMMARY**

Shakespeare Oil Co, Inc

**23-13s-31w**

202 W Main Street  
Salem, IL 62881

**Zerr Trust #4-23**

Job Ticket: 53321

**DST#: 3**

ATTN: Tim Priest

Test Start: 2013.07.17 @ 03:55:00

## Mud and Cushion Information

Mud Type: Gel Chem

Cushion Type:

Oil API:

deg API

Mud Weight: 9.00 lb/gal

Cushion Length:

ft

Water Salinity:

ppm

Viscosity: 49.00 sec/qt

Cushion Volume:

bbbl

Water Loss: 8.78 in<sup>3</sup>

Gas Cushion Type:

Resistivity: ohm.m

Gas Cushion Pressure:

psig

Salinity: 2400.00 ppm

Filter Cake: 1.00 inches

## Recovery Information

Recovery Table

Length ft	Description	Volume bbl
59.00	Gom 10g 30o 60m	0.290
0.00	59 GIP	0.000

Total Length: 59.00 ft      Total Volume: 0.290 bbl

Num Fluid Samples: 0

Num Gas Bombs: 0

Serial #:

Laboratory Name:

Laboratory Location:

Recovery Comments:

# Pressure vs. Time

