



**TRILOBITE  
TESTING, INC.**

# DRILL STEM TEST REPORT

Shakespeare Oil Co, Inc

**23-13s-31w**

202 W Main Street  
Salem, IL 62881

**Zerr Trust #4-23**

Job Ticket: 53322

**DST#: 4**

ATTN: Tim Priest

Test Start: 2013.07.17 @ 19:00:00

## GENERAL INFORMATION:

Formation: **LKC"J"**

Deviated: No Whipstock: ft (KB)

Time Tool Opened: 21:33:30

Time Test Ended: 02:51:09

Test Type: Conventional Bottom Hole (Reset)

Tester: Cornelio Landa III (

Unit No: 62

**Interval: 4160.00 ft (KB) To 4176.00 ft (KB) (TVD)**

Reference Elevations: 2880.00 ft (KB)

Total Depth: 4176.00 ft (KB) (TVD)

2870.00 ft (CF)

Hole Diameter: 7.88 inches Hole Condition: Good

KB to GR/CF: 10.00 ft

**Serial #: 6751 Outside**

Press @ Run Depth: 225.87 psig @ 4165.00 ft (KB)

Capacity: 8000.00 psig

Start Date: 2013.07.17

End Date:

2013.07.18

Last Calib.:

2013.07.18

Start Time:

19:00:05

End Time:

02:51:10

Time On Btm:

2013.07.17 @ 21:33:10

Time Off Btm:

2013.07.18 @ 00:49:00

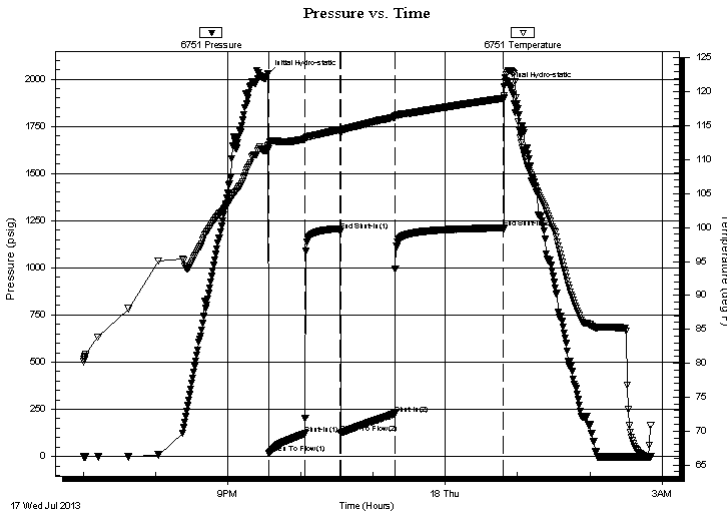
**TEST COMMENT:** IF: 6 in. of blow

IS: No return

FF: 5 1/2 in. of blow - died back to 4 in.

FS: No return

## PRESSURE SUMMARY



Time (Min.)	Pressure (psig)	Temp (deg F)	Annotation
0	2026.42	111.95	Initial Hydro-static
1	16.65	111.63	Open To Flow (1)
31	120.04	113.02	Shut-In(1)
60	1193.91	114.46	End Shut-In(1)
60	123.48	113.92	Open To Flow (2)
105	225.87	116.26	Shut-In(2)
195	1211.65	119.03	End Shut-In(2)
196	1958.54	119.39	Final Hydro-static

## Recovery

Length (ft)	Description	Volume (bbl)
59.00	Ow 5o 95w	0.29
59.00	Mw 5m 95w	0.29
360.00	Mw 5m 95w	5.05

\* Recovery from multiple tests

## Gas Rates

	Choke (inches)	Pressure (psig)	Gas Rate (Mcf/d)



**TRILOBITE  
TESTING, INC.**

# DRILL STEM TEST REPORT

**FLUID SUMMARY**

Shakespeare Oil Co, Inc

**23-13s-31w**

202 W Main Street  
Salem, IL 62881

**Zerr Trust #4-23**

Job Ticket: 53322

**DST#: 4**

ATTN: Tim Priest

Test Start: 2013.07.17 @ 19:00:00

## Mud and Cushion Information

Mud Type: Gel Chem

Cushion Type:

Oil API:

deg API

Mud Weight: 9.00 lb/gal

Cushion Length:

ft

Water Salinity:

93000 ppm

Viscosity: 56.00 sec/qt

Cushion Volume:

bbbl

Water Loss: 7.20 in<sup>3</sup>

Gas Cushion Type:

Resistivity: ohm.m

Gas Cushion Pressure:

psig

Salinity: 2600.00 ppm

Filter Cake: 1.00 inches

## Recovery Information

Recovery Table

Length ft	Description	Volume bbbl
59.00	Ow 5o 95w	0.290
59.00	Mw 5m 95w	0.290
360.00	Mw 5m 95w	5.050

Total Length: 478.00 ft

Total Volume: 5.630 bbl

Num Fluid Samples: 0

Num Gas Bombs: 0

Serial #:

Laboratory Name:

Laboratory Location:

Recovery Comments:

Serial #: 6751

Outside Shakespeare Oil Co, Inc

Zerr Trust #4-23

DST Test Number: 4

### Pressure vs. Time

