



TRILOBITE TESTING, INC.

DRILL STEM TEST REPORT

Shakespeare Oil Co, Inc
 202 W Main Street
 Salem, IL 62881
 ATTN: Tim Priest

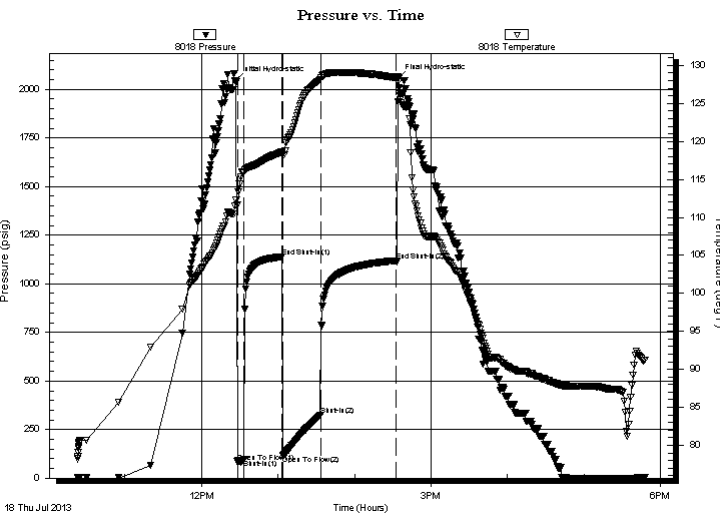
23-13s-31w
Zerr Trust #4-23
 Job Ticket: 52778 **DST#: 5**
 Test Start: 2013.07.18 @ 10:23:00

GENERAL INFORMATION:

Formation: **LKC 'K'**
 Deviated: No Whipstock: ft (KB)
 Time Tool Opened: 12:28:10
 Time Test Ended: 17:47:39
 Interval: **4176.00 ft (KB) To 4208.00 ft (KB) (TVD)**
 Total Depth: 4208.00 ft (KB) (TVD)
 Hole Diameter: 7.88 inches Hole Condition: Good
 Test Type: Conventional Bottom Hole (Reset)
 Tester: Chuck Smith
 Unit No: 62
 Reference Elevations: 2880.00 ft (KB)
 2870.00 ft (CF)
 KB to GR/CF: 10.00 ft

Serial #: 8018 **Inside**
 Press @ Run Depth: 325.22 psig @ 4181.00 ft (KB) Capacity: 8000.00 psig
 Start Date: 2013.07.18 End Date: 2013.07.18 Last Calib.: 2013.07.18
 Start Time: 10:23:02 End Time: 17:47:40 Time On Btm: 2013.07.18 @ 12:26:30
 Time Off Btm: 2013.07.18 @ 14:34:20

TEST COMMENT: B.O.B. @ 1 min.
 B.O.B. @ 9 min.
 B.O.B. @ 2 min.
 B.O.B. @ 13 min.



PRESSURE SUMMARY

Time (Min.)	Pressure (psig)	Temp (deg F)	Annotation
0	2043.77	111.48	Initial Hydro-static
2	83.73	111.68	Open To Flow (1)
7	98.55	115.87	Shut-In(1)
37	1138.94	118.60	End Shut-In(1)
38	117.25	118.21	Open To Flow (2)
67	325.22	128.11	Shut-In(2)
127	1118.99	128.35	End Shut-In(2)
128	2056.81	127.88	Final Hydro-static

Recovery

Length (ft)	Description	Volume (bbl)
179.00	GOCM 10g 30o 60m	1.44
427.00	GO 30g 70o	5.99
366.00	GO 60g 40o	5.13
0.00	2867' GIP	0.00

* Recovery from multiple tests

Gas Rates

Choke (inches)	Pressure (psig)	Gas Rate (Mcf/d)



**TRILOBITE
TESTING, INC.**

DRILL STEM TEST REPORT

FLUID SUMMARY

Shakespeare Oil Co, Inc

23-13s-31w

202 W Main Street
Salem, IL 62881

Zerr Trust #4-23

Job Ticket: 52778

DST#: 5

ATTN: Tim Priest

Test Start: 2013.07.18 @ 10:23:00

Mud and Cushion Information

Mud Type: Gel Chem

Cushion Type:

Oil API:

38 deg API

Mud Weight: 9.00 lb/gal

Cushion Length:

ft

Water Salinity:

ppm

Viscosity: 53.00 sec/qt

Cushion Volume:

bbbl

Water Loss: 7.20 in³

Gas Cushion Type:

Resistivity: ohm.m

Gas Cushion Pressure:

psig

Salinity: 3000.00 ppm

Filter Cake: 1.00 inches

Recovery Information

Recovery Table

Length ft	Description	Volume bbbl
179.00	GOCM 10g 30o 60m	1.436
427.00	GO 30g 70o	5.990
366.00	GO 60g 40o	5.134
0.00	2867' GIP	0.000

Total Length: 972.00 ft Total Volume: 12.560 bbl

Num Fluid Samples: 0

Num Gas Bombs: 0

Serial #:

Laboratory Name:

Laboratory Location:

Recovery Comments: API: 41 @ 90 Degrees F = 38

Pressure vs. Time

