



**TRILOBITE TESTING, INC.**

# DRILL STEM TEST REPORT

Cholla Production, LLC  
 10390 Bradford Rd  
 Suite 201 Littleton CO 80127  
 ATTN: Bill Goff

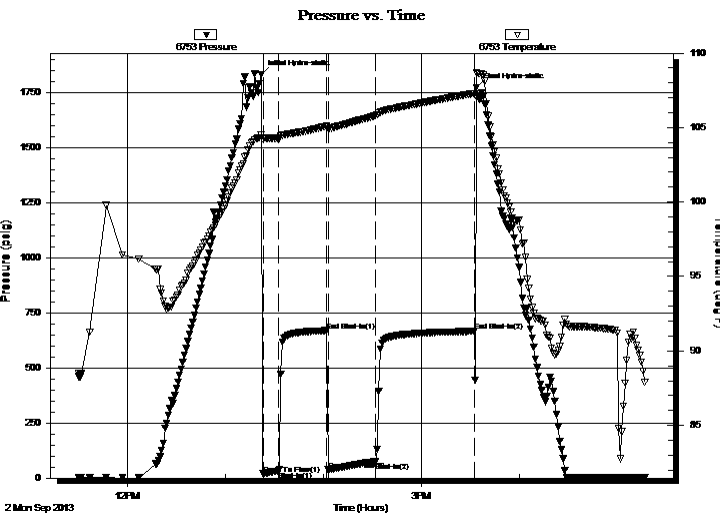
**3-11-23, Trego, KS**  
**Schamberger #1-3**  
 Job Ticket: 54766 **DST#: 3**  
 Test Start: 2013.09.02 @ 11:30:00

## GENERAL INFORMATION:

Formation: **KC "F"**  
 Deviated: No Whipstock: ft (KB)  
 Time Tool Opened: 13:23:00  
 Time Test Ended: 17:17:00  
 Interval: **3646.00 ft (KB) To 3667.00 ft (KB) (TVD)**  
 Total Depth: 3667.00 ft (KB) (TVD)  
 Hole Diameter: 7.88 inches Hole Condition: Fair  
 Test Type: Conventional Bottom Hole (Reset)  
 Tester: Brett Dickinson  
 Unit No: 59  
 Reference Elevations: 2307.00 ft (KB)  
 2300.00 ft (CF)  
 KB to GR/CF: 7.00 ft

**Serial #: 6753 Inside**  
 Press @ Run Depth: 73.64 psig @ 3650.00 ft (KB) Capacity: 8000.00 psig  
 Start Date: 2013.09.02 End Date: 2013.09.02 Last Calib.: 2013.09.02  
 Start Time: 11:30:05 End Time: 17:16:59 Time On Btm: 2013.09.02 @ 13:22:00  
 Time Off Btm: 2013.09.02 @ 15:34:00

TEST COMMENT: IF-2in blow  
 IS- No blow  
 FF-1in blow  
 FS- No blow



## PRESSURE SUMMARY

Time (Min.)	Pressure (psig)	Temp (deg F)	Annotation
0	1831.21	104.52	Initial Hydro-static
1	19.07	104.24	Open To Flow (1)
11	32.58	104.28	Shut-In(1)
40	669.45	105.09	End Shut-In(1)
41	37.91	104.93	Open To Flow (2)
70	73.64	105.79	Shut-In(2)
131	666.62	107.30	End Shut-In(2)
132	1773.54	108.70	Final Hydro-static

## Recovery

Length (ft)	Description	Volume (bbl)
120.00	SMCW 10%M 90%W	0.59

\* Recovery from multiple tests

## Gas Rates

Choke (inches)	Pressure (psig)	Gas Rate (Mcf/d)



**TRILOBITE  
TESTING, INC.**

# DRILL STEM TEST REPORT

**FLUID SUMMARY**

Cholla Production, LLC

**3-11-23, Trego, KS**

10390 Bradford Rd  
Suite 201 Littleton CO 80127

**Schamberger #1-3**

Job Ticket: 54766

**DST#: 3**

ATTN: Bill Goff

Test Start: 2013.09.02 @ 11:30:00

## Mud and Cushion Information

Mud Type: Gel Chem

Cushion Type:

Oil API:

deg API

Mud Weight: 9.00 lb/gal

Cushion Length:

ft

Water Salinity:

35000 ppm

Viscosity: 58.00 sec/qt

Cushion Volume:

bbbl

Water Loss: 7.99 in<sup>3</sup>

Gas Cushion Type:

Resistivity: ohm.m

Gas Cushion Pressure:

psig

Salinity: 3200.00 ppm

Filter Cake: inches

## Recovery Information

Recovery Table

Length ft	Description	Volume bbl
120.00	SMCW 10%M90%W	0.590

Total Length: 120.00 ft      Total Volume: 0.590 bbl

Num Fluid Samples: 0

Num Gas Bombs: 0

Serial #:

Laboratory Name:

Laboratory Location:

Recovery Comments: Sampler Data 2000ml Water 210PSI

# Pressure vs. Time

