



TRILOBITE TESTING, INC.

DRILL STEM TEST REPORT

Woolsey Operating LLC
 125 N. Market, Ste. 1000
 Wichita Ks. 67202
 ATTN: Scott Alberg

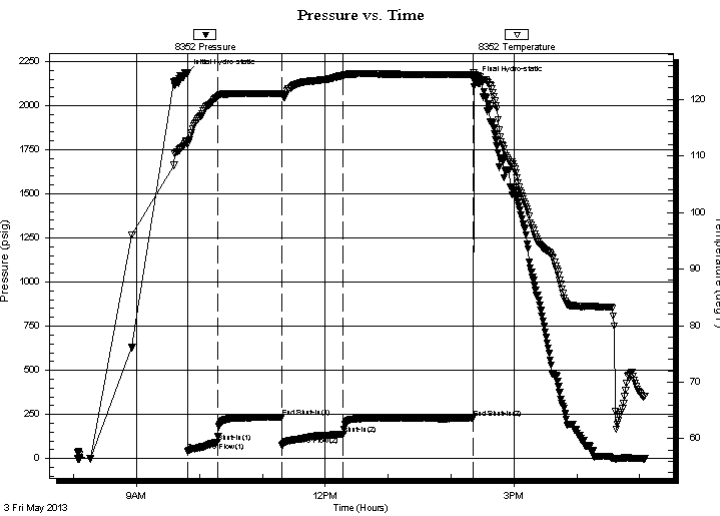
34-33s-11w Barber Ks.
Forester E#2
 Job Ticket: 50973 **DST#: 1**
 Test Start: 2013.05.03 @ 08:03:33

GENERAL INFORMATION:

Formation: **Miss.**
 Deviated: No Whipstock: ft (KB)
 Time Tool Opened: 09:48:48
 Time Test Ended: 17:05:18
 Interval: **4482.00 ft (KB) To 4535.00 ft (KB) (TVD)**
 Total Depth: 4535.00 ft (KB) (TVD)
 Hole Diameter: 7.88 inches Hole Condition: Fair
 Test Type: Conventional Bottom Hole (Initial)
 Tester: Gary Pevoteaux
 Unit No: 56
 Reference Elevations: 1362.00 ft (KB)
 1350.00 ft (CF)
 KB to GR/CF: 12.00 ft

Serial #: 8352 Inside
 Press @ Run Depth: 139.46 psig @ 4483.00 ft (KB) Capacity: 8000.00 psig
 Start Date: 2013.05.03 End Date: 2013.05.03 Last Calib.: 2013.05.03
 Start Time: 08:03:38 End Time: 17:05:18 Time On Btm: 2013.05.03 @ 09:47:18
 Time Off Btm: 2013.05.03 @ 14:22:18

TEST COMMENT: IF: Strong blow . B.O.B. in 75 secs. GTS in 21 mins. (see gas flow report)
 IS: No blow .
 FF: Strong blow . (see gas flow report)
 FS: No blow .



PRESSURE SUMMARY

Time (Min.)	Pressure (psig)	Temp (deg F)	Annotation
0	2183.66	112.62	Initial Hydro-static
2	39.94	111.97	Open To Flow (1)
30	94.33	120.38	Shut-In(1)
92	234.65	121.06	End Shut-In(1)
92	73.83	120.91	Open To Flow (2)
150	139.46	124.25	Shut-In(2)
274	227.59	124.46	End Shut-In(2)
275	2140.31	124.30	Final Hydro-static

Recovery

Length (ft)	Description	Volume (bbl)
120.00	MW 10%w 90%w/Rw .076ohms@71deg	0.59
122.00	GCWM 9%g 45%w 46%m	1.44
140.00	GCWM 12%g 10%w 78%m	1.96

Gas Rates

	Choke (inches)	Pressure (psig)	Gas Rate (Mcf/d)
First Gas Rate	0.25	3.00	27.29
Last Gas Rate	0.25	2.00	25.70
Max. Gas Rate	0.25	3.00	27.29



**TRILOBITE
TESTING, INC.**

DRILL STEM TEST REPORT

FLUID SUMMARY

Woolsey Operating LLC

34-33s-11w Barber Ks.

125 N.Market, Ste.1000
Wichita Ks.67202

Forester E#2

Job Ticket: 50973

DST#: 1

ATTN: Scott Alberg

Test Start: 2013.05.03 @ 08:03:33

Mud and Cushion Information

Mud Type: Gel Chem

Cushion Type:

Oil API:

deg API

Mud Weight: 9.00 lb/gal

Cushion Length:

ft

Water Salinity: 111000 ppm

Viscosity: 50.00 sec/qt

Cushion Volume:

bbbl

Water Loss: 9.19 in³

Gas Cushion Type:

Resistivity: 0.00 ohm.m

Gas Cushion Pressure:

psig

Salinity: 2500.00 ppm

Filter Cake: 0.20 inches

Recovery Information

Recovery Table

Length ft	Description	Volume bbbl
120.00	MW 10%m 90%w /Rw .076ohms @71deg	0.590
122.00	GCWM 9%g 45%w 46%m	1.438
140.00	GCWM 12%g 10%w 78%m	1.964

Total Length: 382.00 ft

Total Volume: 3.992 bbl

Num Fluid Samples: 0

Num Gas Bombs: 1

Serial #: gp-1

Laboratory Name: Caraway

Laboratory Location: Liberal, KS

Recovery Comments:



**TRILOBITE
TESTING, INC.**

DRILL STEM TEST REPORT

GAS RATES

Woolsey Operating LLC

34-33s-11w Barber Ks.

125 N. Market, Ste. 1000
Wichita Ks. 67202

Forester E#2

Job Ticket: 50973

DST#: 1

ATTN: Scott Alberg

Test Start: 2013.05.03 @ 08:03:33

Gas Rates Information

Temperature: 59 (deg F)
Relative Density: 0.65
Z Factor: 0.8

Gas Rates Table

Flow Period	Elapsed Time	Choke (inches)	Pressure (psig)	Gas Rate (Mcf/d)
1	30	0.25	3.00	27.29
1	30	0.25	3.00	27.29
2	10	0.25	3.00	27.29
2	20	0.25	2.00	25.70
2	30	0.25	2.00	25.70
2	40	0.25	2.00	25.70
2	50	0.25	2.00	25.70

Serial #: 8352

Inside

Woodsey Operating LLC

Forester E#2

DST Test Number: 1

Pressure vs. Time

