



**TRILOBITE TESTING, INC.**

# DRILL STEM TEST REPORT

Shakespeare Oil Co, Inc

**16-14s-32w**

202 W Main St  
Salem, IL 62881

**Ottley #4-16**

ATTN: Tim Priest

Job Ticket: 53030

**DST#: 2**

Test Start: 2013.07.30 @ 00:11:00

## GENERAL INFORMATION:

Formation: **Lansing "D-F"**

Deviated: No Whipstock: ft (KB)

Time Tool Opened: 02:36:30

Time Test Ended: 08:18:00

Test Type: Conventional Bottom Hole (Reset)

Tester: Cornelio Landa III

Unit No: 58

**Interval: 3886.00 ft (KB) To 3920.00 ft (KB) (TVD)**

Reference Elevations: 2818.00 ft (KB)

Total Depth: 3920.00 ft (KB) (TVD)

2808.00 ft (CF)

Hole Diameter: 7.88 inches Hole Condition: Fair

KB to GR/CF: 10.00 ft

**Serial #: 8355 Outside**

Press @ RunDepth: 291.05 psig @ 3891.00 ft (KB)

Capacity: 8000.00 psig

Start Date: 2013.07.30

End Date:

2013.07.30

Last Calib.: 2013.07.30

Start Time: 00:11:05

End Time:

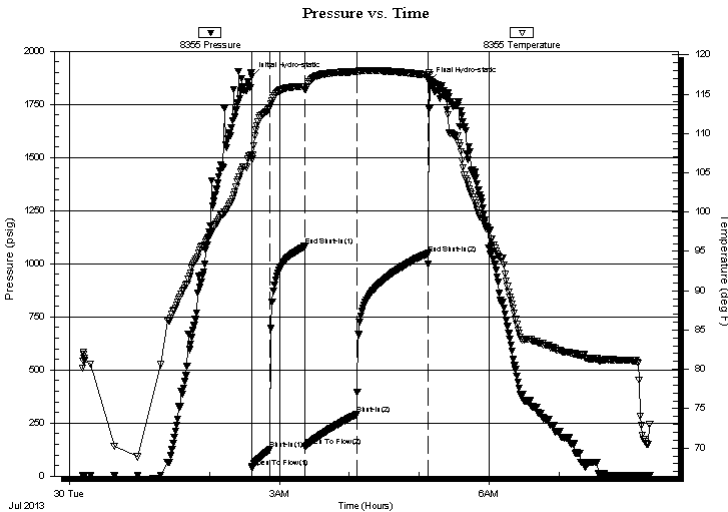
08:17:59

Time On Btm: 2013.07.30 @ 02:36:15

Time Off Btm: 2013.07.30 @ 05:08:15

**TEST COMMENT:** IF: BOB in 3 1/2 mins.  
IS: Bled off in 3 1/2 mins.-4 in. of blow back  
FF: BOB in 3 mins.  
FS: Bled off in 2 mins.-BOB in 58 mins.

## PRESSURE SUMMARY



Time (Min.)	Pressure (psig)	Temp (deg F)	Annotation
0	1882.81	107.30	Initial Hydro-static
1	40.52	106.73	Open To Flow (1)
16	125.91	113.24	Shut-In(1)
46	1082.18	115.94	End Shut-In(1)
46	139.72	115.61	Open To Flow (2)
91	291.05	117.84	Shut-In(2)
152	1048.37	117.41	End Shut-In(2)
152	1855.96	117.72	Final Hydro-static

## Recovery

Length (ft)	Description	Volume (bbl)
120.00	Go 20g 80o	0.60
660.00	Go 20g 80o	9.26

## Gas Rates

	Choke (inches)	Pressure (psig)	Gas Rate (Mcf/d)

\* Recovery from multiple tests



**TRILOBITE  
TESTING, INC.**

# DRILL STEM TEST REPORT

**FLUID SUMMARY**

Shakespeare Oil Co, Inc

**16-14s-32w**

202 W Main St  
Salem, IL 62881

**Ottley #4-16**

Job Ticket: 53030

**DST#: 2**

ATTN: Tim Priest

Test Start: 2013.07.30 @ 00:11:00

## Mud and Cushion Information

Mud Type: Gel Chem

Cushion Type:

Oil API:

32 deg API

Mud Weight: 9.00 lb/gal

Cushion Length:

ft

Water Salinity:

ppm

Viscosity: 56.00 sec/qt

Cushion Volume:

bbbl

Water Loss: 8.79 in<sup>3</sup>

Gas Cushion Type:

Resistivity: ohm.m

Gas Cushion Pressure:

psig

Salinity: 2800.00 ppm

Filter Cake: 1.00 inches

## Recovery Information

Recovery Table

Length ft	Description	Volume bbl
120.00	Go 20g 80o	0.599
660.00	Go 20g 80o	9.258

Total Length: 780.00 ft      Total Volume: 9.857 bbl

Num Fluid Samples: 0

Num Gas Bombs: 0

Serial #:

Laboratory Name:

Laboratory Location:

Recovery Comments: Gravity w as a 33@70

### Pressure vs. Time

