



**TRILOBITE
TESTING, INC.**

DRILL STEM TEST REPORT

Shakespeare Oil Co, Inc

16-14s-32w

202 W Main St
Salem, IL 62881

Ottley #4-16

ATTN: Tim Priest

Job Ticket: 53033

DST#: 5

Test Start: 2013.08.01 @ 13:16:00

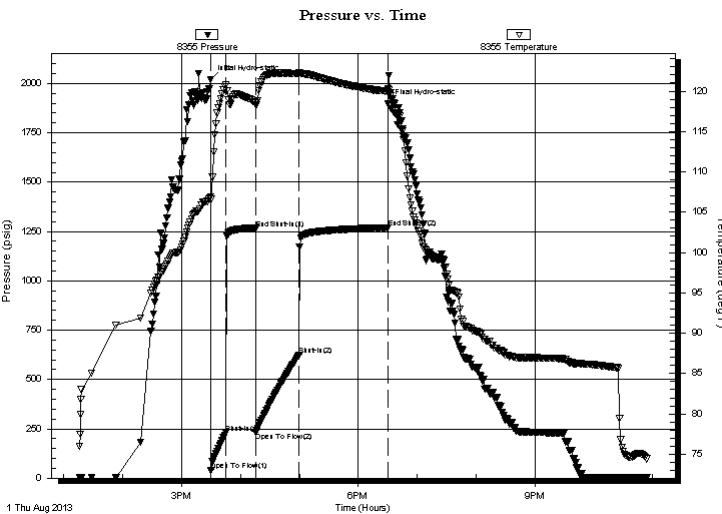
GENERAL INFORMATION:

Formation: **Lkc "L"**
 Deviated: No Whipstock: ft (KB)
 Time Tool Opened: 15:30:00
 Time Test Ended: 22:54:00
 Interval: **4091.00 ft (KB) To 4125.00 ft (KB) (TVD)**
 Total Depth: 4125.00 ft (KB) (TVD)
 Hole Diameter: 7.88 inches Hole Condition: Fair
 Test Type: Conventional Bottom Hole (Reset)
 Tester: Cornelio Landa III
 Unit No: 58
 Reference Elevations: 2818.00 ft (KB)
 2808.00 ft (CF)
 KB to GR/CF: 10.00 ft

Serial #: 8355

Press @ Run Depth: 623.69 psig @ ft (KB) Capacity: 8000.00 psig
 Start Date: 2013.08.01 End Date: 2013.08.01 Last Calib.: 2013.08.01
 Start Time: 13:16:05 End Time: 22:54:00 Time On Btm: 2013.08.01 @ 15:29:45
 Time Off Btm: 2013.08.01 @ 18:30:15

TEST COMMENT: IF: B.o.b. in 4 mins.
 IS: Bled off in 2 mins.-Surface blow after 6 min. into shut-in
 FF: B.o.b. in 4 mins
 FSI: Bled off in 2 mins.-Surface blow after 6 min. into shut-in died in 10 mins.



PRESSURE SUMMARY

Time (Min.)	Pressure (psig)	Temp (deg F)	Annotation
0	2019.06	106.88	Initial Hydro-static
1	39.97	106.60	Open To Flow (1)
16	229.54	120.75	Shut-In(1)
46	1265.51	118.61	End Shut-In(1)
46	231.77	118.32	Open To Flow (2)
90	623.69	122.15	Shut-In(2)
181	1268.75	119.97	End Shut-In(2)
181	1898.59	120.26	Final Hydro-static

Recovery

Length (ft)	Description	Volume (bbl)
120.00	Wm 45w 55m	0.60
120.00	Gmw 5g 5m 90w	1.68
300.00	Gomw 10g 10o 30m 50w	4.21
240.00	Ogmw 10o 20g 30m 40w	3.37
480.00	Gmo 10g 30m 60o	6.73
5.00	Clean oil	0.07

* Recovery from multiple tests

Gas Rates

	Choke (inches)	Pressure (psig)	Gas Rate (Mcf/d)



**TRILOBITE
TESTING, INC.**

DRILL STEM TEST REPORT

FLUID SUMMARY

Shakespeare Oil Co, Inc

16-14s-32w

202 W Main St
Salem, IL 62881

Ottley #4-16

Job Ticket: 53033

DST#: 5

ATTN: Tim Priest

Test Start: 2013.08.01 @ 13:16:00

Mud and Cushion Information

Mud Type: Gel Chem

Cushion Type:

Oil API:

deg API

Mud Weight: 9.00 lb/gal

Cushion Length:

ft

Water Salinity:

24000 ppm

Viscosity: 55.00 sec/qt

Cushion Volume:

bbbl

Water Loss: 10.37 in³

Gas Cushion Type:

Resistivity: ohm.m

Gas Cushion Pressure:

psig

Salinity: 4400.00 ppm

Filter Cake: 1.00 inches

Recovery Information

Recovery Table

Length ft	Description	Volume bbbl
120.00	Wm 45w 55m	0.599
120.00	Gmw 5g 5m 90w	1.683
300.00	Gomw 10g 10o 30m 50w	4.208
240.00	Ogmw 10o 20g 30m 40w	3.367
480.00	Gmo 10g 30m 60o	6.733
5.00	Clean oil	0.070
0.00	70 ft GIP	0.000

Total Length: 1265.00 ft Total Volume: 16.660 bbl

Num Fluid Samples: 0

Num Gas Bombs: 0

Serial #:

Laboratory Name:

Laboratory Location:

Recovery Comments: RW .110@75=24000 ppm

