



**TRILOBITE TESTING, INC.**

# DRILL STEM TEST REPORT

Shakespeare Oil Co, Inc

**16-14s-32w Logan Co. KS**

202 W Main St  
Salem, IL 62881

**Ottley #4-16**

Job Ticket: 49094

**DST#: 7**

ATTN: Tim Priest

Test Start: 2013.08.03 @ 16:04:00

## GENERAL INFORMATION:

Formation: **Johnson**

Deviated: No Whipstock: ft (KB)

Time Tool Opened: 18:21:55

Time Test Ended: 00:27:24

Test Type: Conventional Bottom Hole (Reset)

Tester: Will MacLean

Unit No: 58

**Interval: 4380.00 ft (KB) To 4420.00 ft (KB) (TVD)**

Reference Elevations: 2818.00 ft (KB)

Total Depth: 4420.00 ft (KB) (TVD)

2808.00 ft (CF)

Hole Diameter: 7.88 inches Hole Condition: Good

KB to GR/CF: 10.00 ft

**Serial #: 8674 Inside**

Press @ Run Depth: 59.07 psig @ 4381.00 ft (KB)

Capacity: 8000.00 psig

Start Date: 2013.08.03

End Date:

2013.08.04

Last Calib.: 2013.08.04

Start Time: 16:04:00

End Time:

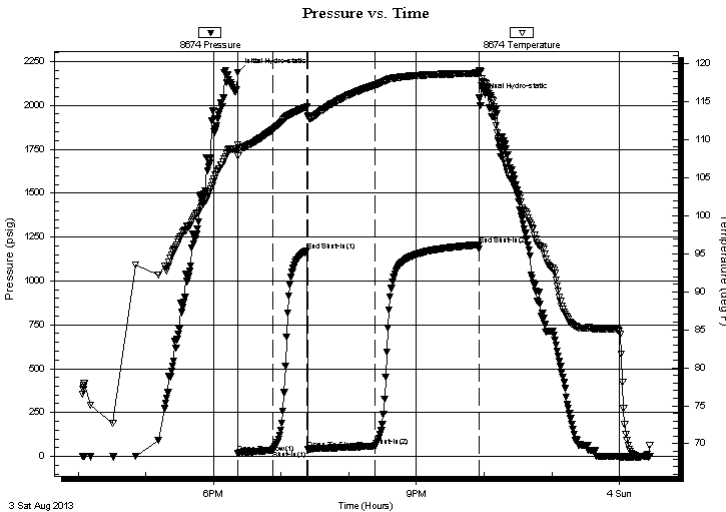
00:27:24

Time On Btm: 2013.08.03 @ 18:21:40

Time Off Btm: 2013.08.03 @ 21:55:54

**TEST COMMENT:** IF- Weak Surface Blow Built to 8"  
IS- No Blow  
FF- Weak Surface Blow Built to BOB in 45min  
FS- Weak Surface Blow in 25min Died in 50min

## PRESSURE SUMMARY



Time (Min.)	Pressure (psig)	Temp (deg F)	Annotation
0	2186.79	109.30	Initial Hydro-static
1	16.36	107.90	Open To Flow (1)
31	36.28	111.31	Shut-In(1)
62	1171.31	114.27	End Shut-In(1)
63	40.18	113.04	Open To Flow (2)
122	59.07	117.15	Shut-In(2)
214	1205.72	118.74	End Shut-In(2)
215	2045.31	119.10	Final Hydro-static

## Recovery

Length (ft)	Description	Volume (bbl)
60.00	GOCM 28%g 34%oil 38%m	0.30
60.00	MGCO 19%m 24%g 57%oil	0.30
20.00	GO 6%g 94%oil	0.28
0.00	352' of GIP	0.00

\* Recovery from multiple tests

## Gas Rates

	Choke (inches)	Pressure (psig)	Gas Rate (Mcf/d)



**TRILOBITE  
TESTING, INC.**

# DRILL STEM TEST REPORT

**FLUID SUMMARY**

Shakespeare Oil Co, Inc

**16-14s-32w Logan Co. KS**

202 W Main St  
Salem, IL 62881

**Ottley #4-16**

Job Ticket: 49094

**DST#: 7**

ATTN: Tim Priest

Test Start: 2013.08.03 @ 16:04:00

## Mud and Cushion Information

Mud Type: Gel Chem

Cushion Type:

Oil API:

28 deg API

Mud Weight: 9.00 lb/gal

Cushion Length:

ft

Water Salinity:

ppm

Viscosity: 58.00 sec/qt

Cushion Volume:

bbbl

Water Loss: 11.56 in<sup>3</sup>

Gas Cushion Type:

Resistivity: ohm.m

Gas Cushion Pressure:

psig

Salinity: 6700.00 ppm

Filter Cake: 2.00 inches

## Recovery Information

Recovery Table

Length ft	Description	Volume bbbl
60.00	GOCM 28%g 34%oil 38%m	0.295
60.00	MGCO 19%m 24%g 57%oil	0.304
20.00	GO 6%g 94%oil	0.281
0.00	352' of GIP	0.000

Total Length: 140.00 ft      Total Volume: 0.880 bbl

Num Fluid Samples: 0

Num Gas Bombs: 0

Serial #:

Laboratory Name:

Laboratory Location:

Recovery Comments: API is 29 @ 70f = 28

Serial #: 8674

Inside

Shakespeare Oil Co, Inc

Oilley #4-16

DST Test Number: 7

