



TRILOBITE TESTING, INC.

DRILL STEM TEST REPORT

Samuel Gary Jr. and Associates, Inc.

32 16s 14w Barton

1515 Wynkoop St. Ste 700
Denver, CO 80202

Bob et al 1-32

Job Ticket: 53810

DST#: 2

ATTN: Chris Mitchell

Test Start: 2013.06.04 @ 16:00:00

GENERAL INFORMATION:

Formation: **LKC-J**

Deviated: No Whipstock: 2011.00 ft (KB)

Time Tool Opened: 17:39:40

Time Test Ended: 23:47:09

Test Type: Conventional Straddle (Initial)

Tester: RANDY WILLIAMS

Unit No: 41

Interval: 3374.00 ft (KB) To 3400.00 ft (KB) (TVD)

Reference Elevations: 2011.00 ft (KB)

Total Depth: 3600.00 ft (KB) (TVD)

2001.00 ft (CF)

Hole Diameter: 7.88 inches Hole Condition: Fair

KB to GR/CF: 10.00 ft

Serial #: 6752 Inside

Press @ Run Depth: 727.53 psig @ 3375.00 ft (KB)

Capacity: 8000.00 psig

Start Date: 2013.06.04

End Date:

2013.06.04

Last Calib.:

2013.06.05

Start Time: 16:00:01

End Time:

23:47:10

Time On Btm:

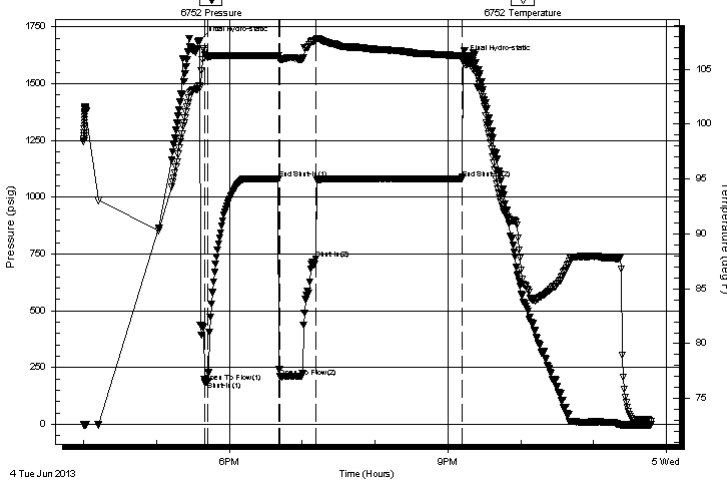
2013.06.04 @ 17:35:40

Time Off Btm:

2013.06.04 @ 21:12:20

TEST COMMENT: IF-5-, BUILT BOTTOM BUCKET 30 SEC'S
ISN-60- NBB
FF-30- WBB- BUILT BOTTOM BUCKET 20 MIN'S
FSN-120- NBB

Pressure vs. Time



PRESSURE SUMMARY

Time (Min.)	Pressure (psig)	Temp (deg F)	Annotation
0	1689.04	103.51	Initial Hydro-static
4	186.13	106.33	Open To Flow (1)
7	190.38	106.09	Shut-In(1)
65	1081.90	106.21	End Shut-In(1)
67	208.81	105.92	Open To Flow (2)
96	727.53	107.66	Shut-In(2)
216	1082.24	106.19	End Shut-In(2)
217	1606.33	106.15	Final Hydro-static

Recovery

Length (ft)	Description	Volume (bbl)
512.00	MUD 100%	7.18
640.00	MUDDY WATER 30% M, 70% W	8.98

Gas Rates

	Choke (inches)	Pressure (psig)	Gas Rate (Mcf/d)



**TRILOBITE
TESTING, INC.**

DRILL STEM TEST REPORT

FLUID SUMMARY

Samuel Gary Jr. and Associates, Inc.

32 16s 14w Barton

1515 Wynkoop St. Ste 700
Denver, CO 80202

Bob et al 1-32

Job Ticket: 53810

DST#: 2

ATTN: Chris Mitchell

Test Start: 2013.06.04 @ 16:00:00

Mud and Cushion Information

Mud Type: Gel Chem

Cushion Type:

Oil API:

deg API

Mud Weight: 9.00 lb/gal

Cushion Length:

ft

Water Salinity:

37000 ppm

Viscosity: 63.00 sec/qt

Cushion Volume:

bbbl

Water Loss: 8.75 in³

Gas Cushion Type:

Resistivity: ohm.m

Gas Cushion Pressure:

psig

Salinity: 9300.00 ppm

Filter Cake: 0.00 inches

Recovery Information

Recovery Table

Length ft	Description	Volume bbbl
512.00	MUD 100%	7.182
640.00	MUDDY WATER 30% M, 70% W	8.978

Total Length: 1152.00 ft Total Volume: 16.160 bbl

Num Fluid Samples: 0

Num Gas Bombs: 0

Serial #:

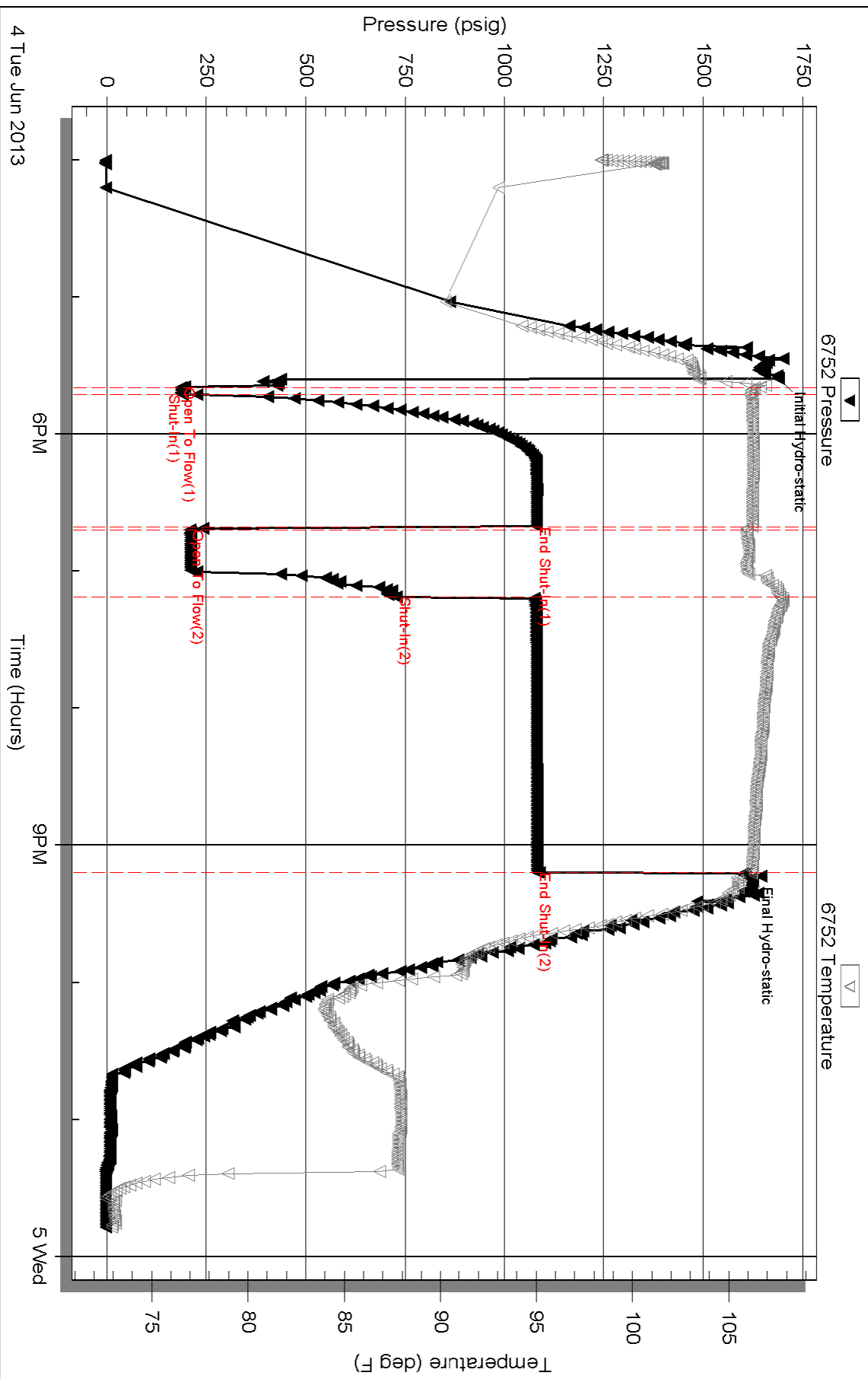
Laboratory Name:

Laboratory Location:

Recovery Comments: SAMPLER-200ML WATER 100% - 200 PSI

WATER= .217 @ 75 DEG = 37000.0 CHLORIDES

Pressure vs. Time



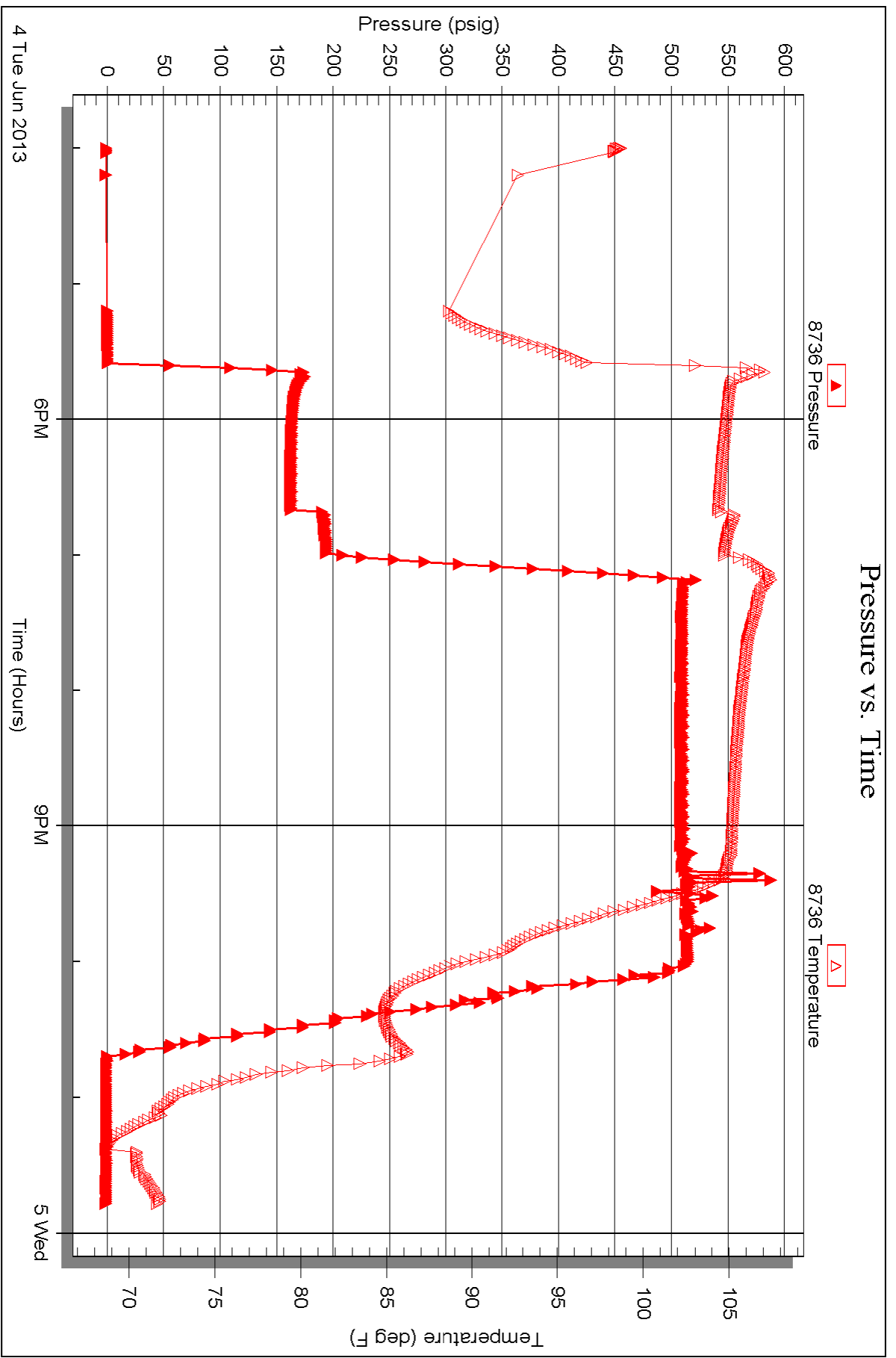
Serial #: 8736

Fluid

Samuel Gary Jr. and Associates, Inc.

Bob et al 1-32

DST Test Number: 2



Triobite Testing, Inc

Ref. No: 53810

Printed: 2013.06.05 @ 07:59:45

