



DRILL STEM TEST REPORT

Prepared For: **Scotts Production LLC**

PO Box 136
Roxbury KS 67476

ATTN: Doug Davis

Swisher #8

8-16s-1w Saline,KS

Start Date: 2013.07.20 @ 01:50:00

End Date: 2013.07.20 @ 10:26:00

Job Ticket #: 50443 DST #: 1

Trilobite Testing, Inc
PO Box 362 Hays, KS 67601
ph: 785-625-4778 fax: 785-625-5620

Printed: 2013.07.23 @ 09:42:30



**TRILOBITE
TESTING, INC.**

DRILL STEM TEST REPORT

Scotts Production LLC

8-16s-1w Saline,KS

PO Box 136
Roxbury KS 67476

Swisher #8

ATTN: Doug Davis

Job Ticket: 50443

DST#: 1

Test Start: 2013.07.20 @ 01:50:00

GENERAL INFORMATION:

Formation: **Warsaw**

Deviated: No Whipstock: ft (KB)

Time Tool Opened: 04:32:00

Time Test Ended: 10:26:00

Test Type: Conventional Bottom Hole (Initial)

Tester: Jim Svaty

Unit No: 54

Interval: 2668.00 ft (KB) To 2684.00 ft (KB) (TVD)

Reference Elevations: 1310.00 ft (KB)

Total Depth: 2684.00 ft (KB) (TVD)

1305.00 ft (CF)

Hole Diameter: 7.88 inches Hole Condition: Fair

KB to GR/CF: 5.00 ft

Serial #: 6668 Outside

Press @ RunDepth: 92.23 psig @ 2669.00 ft (KB)

Capacity: 8000.00 psig

Start Date: 2013.07.20 End Date: 2013.07.20

Last Calib.: 2013.07.20

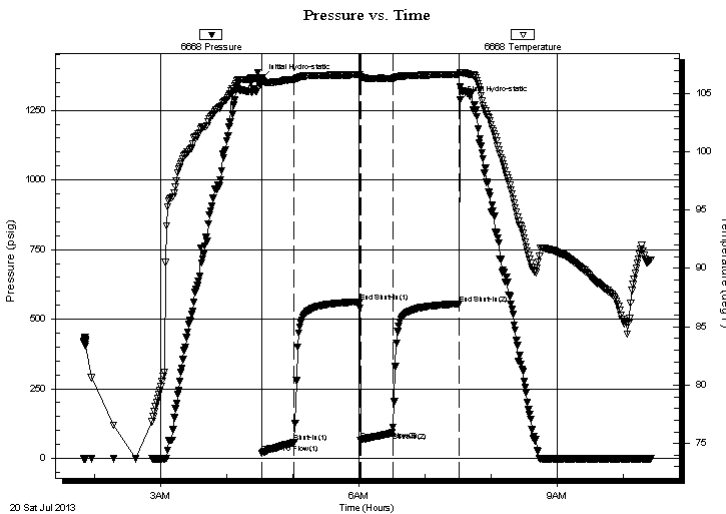
Start Time: 01:50:02 End Time: 10:25:30

Time On Btm: 2013.07.20 @ 04:31:30

Time Off Btm: 2013.07.20 @ 07:32:00

TEST COMMENT: 30-IFP- Surface Blow Building to 7 1/4"
60-ISIP- No Blow
30-FFP- Surface Blow in 13 min. Building to 1 1/2"
60-FSIP- No Blow

PRESSURE SUMMARY



| Time (Min.) | Pressure (psig) | Temp (deg F) | Annotation |
|-------------|-----------------|--------------|----------------------|
| 0 | 1362.38 | 106.34 | Initial Hydro-static |
| 1 | 18.11 | 105.97 | Open To Flow (1) |
| 30 | 57.46 | 106.17 | Shut-In(1) |
| 90 | 562.43 | 106.59 | End Shut-In(1) |
| 90 | 66.21 | 106.37 | Open To Flow (2) |
| 120 | 92.23 | 106.27 | Shut-In(2) |
| 180 | 555.21 | 106.63 | End Shut-In(2) |
| 181 | 1286.27 | 106.80 | Final Hydro-static |

Recovery

| Length (ft) | Description | Volume (bbl) |
|-------------|---------------------|--------------|
| 30.00 | GCO 10%g 90%o | 0.15 |
| 30.00 | OWCM 20%o 20%w 60%m | 0.15 |
| 60.00 | OWCM 5%o 20%w 75%m | 0.30 |
| 60.00 | OMCW 2%o 30%m 68%w | 0.30 |
| 0.00 | 30 gip | 0.00 |

Gas Rates

| Choke (inches) | Pressure (psig) | Gas Rate (Mcf/d) |
|----------------|-----------------|------------------|
| | | |



**TRILOBITE
TESTING, INC.**

DRILL STEM TEST REPORT

TOOL DIAGRAM

Scotts Production LLC

8-16s-1w Saline,KS

PO Box 136
Roxbury KS 67476

Swisher #8

Job Ticket: 50443

DST#: 1

ATTN: Doug Davis

Test Start: 2013.07.20 @ 01:50:00

Tool Information

| | | | | | |
|---------------------------|--------------------|-----------------------|--------------------------------|------------------------|-------------|
| Drill Pipe: | Length: 2444.00 ft | Diameter: 3.80 inches | Volume: 34.28 bbl | Tool Weight: | 2500.00 lb |
| Heavy Wt. Pipe: | Length: 0.00 ft | Diameter: 2.75 inches | Volume: 0.00 bbl | Weight set on Packer: | 25000.00 lb |
| Drill Collar: | Length: 217.00 ft | Diameter: 2.25 inches | Volume: 1.07 bbl | Weight to Pull Loose: | 48000.00 lb |
| | | | <u>Total Volume: 35.35 bbl</u> | Tool Chased | 0.00 ft |
| Drill Pipe Above KB: | 21.00 ft | | | String Weight: Initial | 45000.00 lb |
| Depth to Top Packer: | 2668.00 ft | | | Final | 45000.00 lb |
| Depth to Bottom Packer: | ft | | | | |
| Interval between Packers: | 16.00 ft | | | | |
| Tool Length: | 44.00 ft | | | | |
| Number of Packers: | 2 | Diameter: 6.75 inches | | | |
| Tool Comments: | | | | | |

| Tool Description | Length (ft) | Serial No. | Position | Depth (ft) | Accum. Lengths |
|------------------|-------------|------------|----------|------------|----------------|
|------------------|-------------|------------|----------|------------|----------------|

| | | | | | |
|-----------------|-------|------|---------|---------|-------------------------------|
| Change Over Sub | 1.00 | | | 2641.00 | |
| Shut In Tool | 5.00 | | | 2646.00 | |
| Hydraulic tool | 5.00 | | | 2651.00 | |
| Jars | 5.00 | | | 2656.00 | |
| Safety Joint | 2.00 | | | 2658.00 | |
| Packer | 5.00 | | | 2663.00 | 28.00 Bottom Of Top Packer |
| Packer | 5.00 | | | 2668.00 | |
| Stubb | 1.00 | | | 2669.00 | |
| Recorder | 0.00 | 8789 | Inside | 2669.00 | |
| Recorder | 0.00 | 6668 | Outside | 2669.00 | |
| Perforations | 12.00 | | | 2681.00 | |
| Bullnose | 3.00 | | | 2684.00 | 16.00 Bottom Packers & Anchor |

Total Tool Length: 44.00



**TRILOBITE
TESTING, INC.**

DRILL STEM TEST REPORT

FLUID SUMMARY

Scotts Production LLC

8-16s-1w Saline,KS

PO Box 136
Roxbury KS 67476

Swisher #8

Job Ticket: 50443

DST#: 1

ATTN: Doug Davis

Test Start: 2013.07.20 @ 01:50:00

Mud and Cushion Information

Mud Type: Gel Chem

Cushion Type:

Oil API:

34 deg API

Mud Weight: 10.00 lb/gal

Cushion Length:

ft

Water Salinity:

10000 ppm

Viscosity: 43.00 sec/qt

Cushion Volume:

bbbl

Water Loss: 9.35 in³

Gas Cushion Type:

Resistivity: ohm.m

Gas Cushion Pressure:

psig

Salinity: 1100.00 ppm

Filter Cake: 2.00 inches

Recovery Information

Recovery Table

| Length ft | Description | Volume bbbl |
|--------------|---------------------|----------------|
| 30.00 | GCO 10%g 90%o | 0.148 |
| 30.00 | OWCM 20%o 20%w 60%m | 0.148 |
| 60.00 | OWCM 5%o 20%w 75%m | 0.295 |
| 60.00 | OMCW 2%o 30%m 68%w | 0.295 |
| 0.00 | 30 gip | 0.000 |

Total Length: 180.00 ft

Total Volume: 0.886 bbl

Num Fluid Samples: 0

Num Gas Bombs: 0

Serial #:

Laboratory Name:

Laboratory Location:

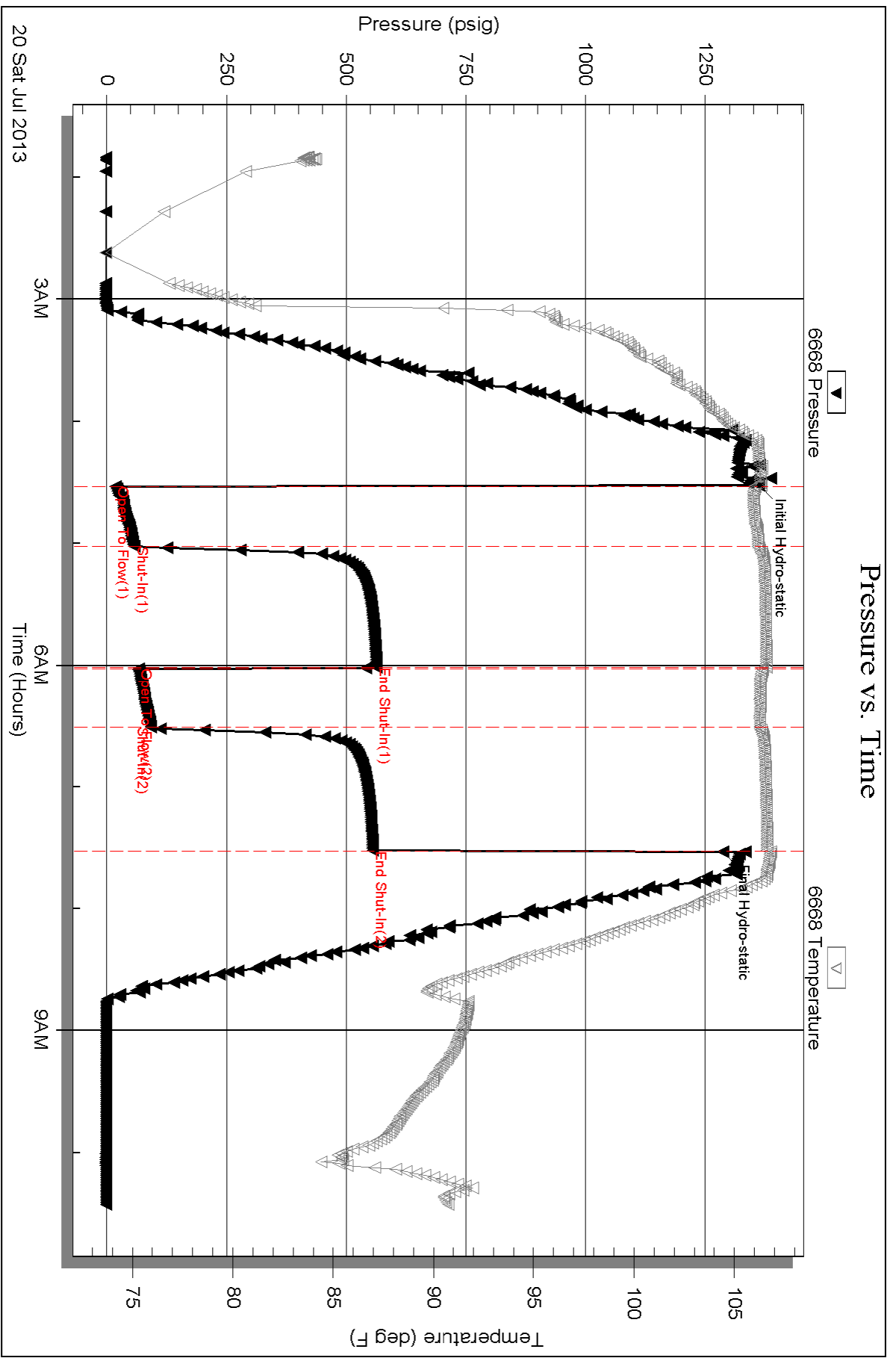
Recovery Comments: .450 @ 96

Serial #: 6668

Outside Scotts Production LLC

Swisher #8

DST Test Number: 1



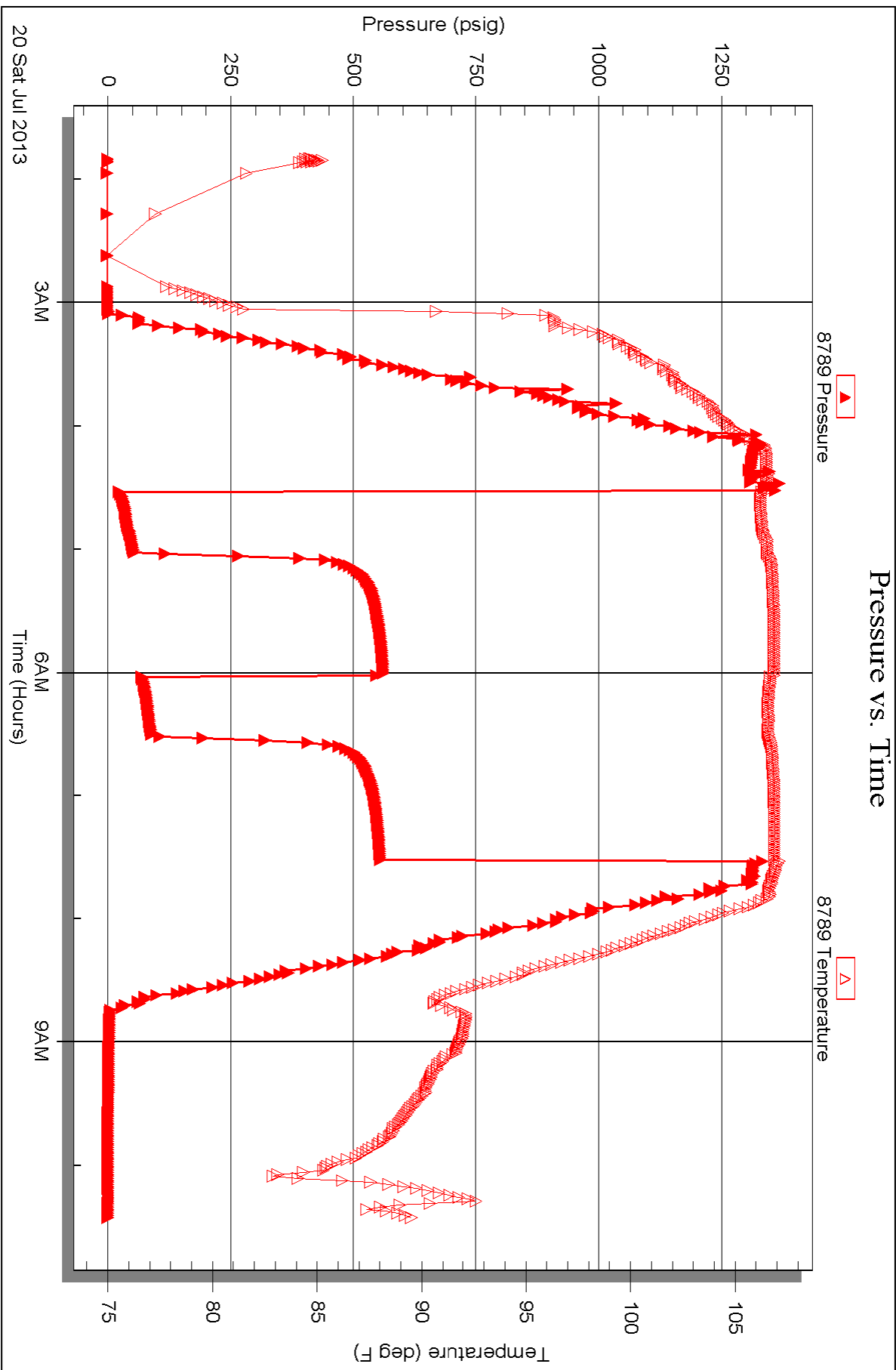
Serial #: 8789

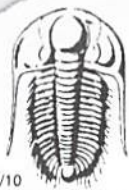
Inside

Scotts Production LLC

Swisher #8

DST Test Number: 1





TRILOBITE TESTING INC.

1515 Commerce Parkway • Hays, Kansas 67601

Test Ticket

NO. 50443

Well Name & No. Swisher # 8 Test No. 1 Date 7-20-13
 Company Scott's Production LLC Elevation 1310 KB 1305 GL
 Address P.O. Box 136-110 N. Memory Trail Roxbury KS. 67476
 Co. Rep / Geo. Doug Davis Rig _____
 Location: Sec. 8 Twp. 16^s Rge. 1^w Co. Saline State KS

Interval Tested 2668 - 2684 Zone Tested WARSAW
 Anchor Length 16 Drill Pipe Run 2444 Mud Wt. 9.5
 Top Packer Depth 2663 Drill Collars Run 217 Vis 43
 Bottom Packer Depth 2668 Wt. Pipe Run 0 WL 9.4
 Total Depth 2684 Chlorides 1100 ppm System LCM 2

Blow Description IFP - Surface Blow Building to 7 1/4 in.
ISIP - No Blow
FFP - Surface blow in 13 min. Building to 1 1/2 in.
FSIP - No Blow

| Rec | Feet of | %gas | %oil | %water | %mud |
|-----|---------|------|------|--------|------|
| 30 | 2CO | 10 | 90 | | |
| 30 | OWCM | | 20 | 20 | 60 |
| 60 | OWCM | | 5 | 20 | 75 |
| 60 | OMCW | | 2 | 68 | 30 |
| 30 | 2IP | | | | |

Rec Total 180 BHT 106 Gravity 34 API RW 450 @ 96 ° F Chlorides 10000 ppm

(A) Initial Hydrostatic 1362 Test 1150. - T-On Location 00:40
 (B) First Initial Flow 18 Jars 250. - T-Started 01:50
 (C) First Final Flow 57 Safety Joint 75. - T-Open 04:32
 (D) Initial Shut-In 562 Circ Sub _____ T-Pulled 07:32
 (E) Second Initial Flow 66 Hourly Standby _____ T-Out 10:26
 (F) Second Final Flow 92 Mileage 222 RT 344.10 Comments paid CR # 7555
 (G) Final Shut-In 555 Sampler _____ Ruined Shale Packer _____
 (H) Final Hydrostatic 1286 Straddle _____ Ruined Packer _____

Initial Open 30 Shale Packer _____ Extra Copies _____
 Initial Shut-In 60 Extra Packer _____ Sub Total _____
 Final Flow 30 Extra Recorder _____ Total 1819.10
 Final Shut-In 60 Day Standby _____ MP/DST Disc't _____
 Sub Total 1819.10 Accessibility _____

Approved By _____ Our Representative [Signature]
 TriLOBITE TESTING INC. shall not be liable for damaged of any kind of the property or personnel of the one for whom a test is made, or for any loss suffered or sustained, directly or indirectly, through the use of its equipment, or its statements or opinion concerning the results of any test, tools lost or damaged in the hole shall be paid for at cost by the party for whom the test is made.