



DRILL STEM TEST REPORT

Prepared For: **F.G.Holl Company LLC**

9431 East Central Suite 100
Wichita, Kansas 67206 2563

ATTN: Rene Husted

Farthing #2-32

32-21s-15w Pawnee

Start Date: 2013.09.06 @ 00:00:00

End Date: 2013.09.06 @ 00:00:00

Job Ticket #: 17085 DST #: 4

Superior Testers Enterprises LLC
PO Box 138 Great Bend KS 67530
1-800-792-6902

Printed: 2013.09.06 @ 21:43:14



DRILL STEM TEST REPORT

F.G.Holl Company LLC

32-21s-15w Pawnee

9431 East Central Suite 100
Wichita, Kansas 67206 2563

Farthing #2-32

Job Ticket: 17085

DST#: 4

ATTN: Rene Husted

Test Start: 2013.09.06 @ 00:00:00

GENERAL INFORMATION:

Formation: **kansas City "I"**

Deviated: No Whipstock: ft (KB)

Time Tool Opened: 00:00:00

Time Test Ended: 00:00:00

Test Type: Conventional Bottom Hole (Initial)

Tester: Gene Budig

Unit No: 3335

Interval: 3651.00 ft (KB) To 3670.00 ft (KB) (TVD)

Reference Elevations: 1986.00 ft (KB)

Total Depth: 3670.00 ft (KB) (TVD)

1978.00 ft (CF)

Hole Diameter: 7.88 inches Hole Condition: Fair

KB to GR/CF: 8.00 ft

Serial #: 6748 Outside

Press@RunDepth: 1177.84 psia @ 3667.00 ft (KB)

Capacity: 5000.00 psia

Start Date: 2013.09.06 End Date: 2013.09.06

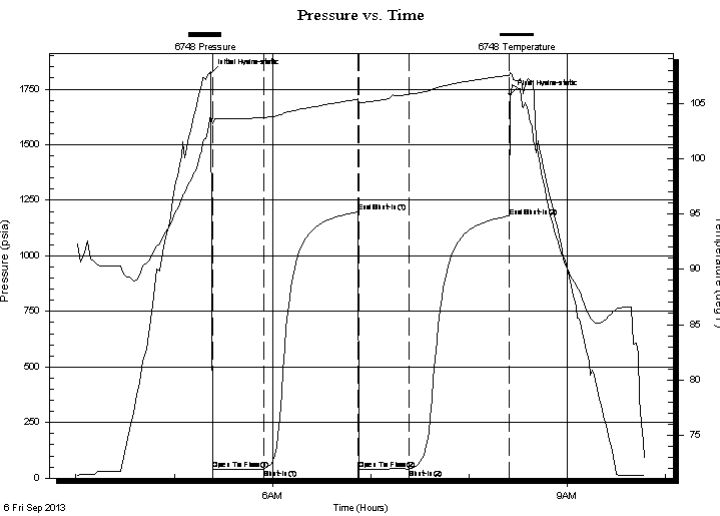
Last Calib.: 2013.09.06

Start Time: 04:00:00 End Time: 09:47:30

Time On Btm: 2013.09.06 @ 05:22:30

Time Off Btm: 2013.09.06 @ 08:25:00

TEST COMMENT: 1st Opening 30 Minutes Weak blow for on e minute and died
1st Shut-In 60 Minutes-No blow back
2nd Opening 30 Minutes-No blow
2nd Shut-In 60 Minutes-No blow back



PRESSURE SUMMARY

Time (Min.)	Pressure (psia)	Temp (deg F)	Annotation
0	1822.00	103.91	Initial Hydro-static
1	38.28	103.11	Open To Flow (1)
33	41.06	103.72	Shut-In(1)
90	1197.42	105.37	End Shut-In(1)
91	40.75	104.87	Open To Flow (2)
122	41.78	105.80	Shut-In(2)
182	1177.84	107.53	End Shut-In(2)
183	1726.12	107.69	Final Hydro-static

Recovery

Length (ft)	Description	Volume (bbl)
1.00	Thick Heavy Mud	0.01

Gas Rates

Choke (inches)	Pressure (psia)	Gas Rate (Mcf/d)



DRILL STEM TEST REPORT

F.G.Holl Company LLC

32-21s-15w Pawnee

9431 East Central Suite 100
Wichita, Kansas 67206 2563

Farthing #2-32

Job Ticket: 17085

DST#: 4

ATTN: Rene Husted

Test Start: 2013.09.06 @ 00:00:00

GENERAL INFORMATION:

Formation: **kansas City "I"**

Deviated: No Whipstock: ft (KB)

Time Tool Opened: 00:00:00

Time Test Ended: 00:00:00

Test Type: Conventional Bottom Hole (Initial)

Tester: Gene Budig

Unit No: 3335

Interval: 3651.00 ft (KB) To 3670.00 ft (KB) (TVD)

Reference Elevations: 1986.00 ft (KB)

Total Depth: 3670.00 ft (KB) (TVD)

1978.00 ft (CF)

Hole Diameter: 7.88 inches Hole Condition: Fair

KB to GR/CF: 8.00 ft

Serial #: 6663 Inside

Press@RunDepth: 1174.53 psia @ 3666.00 ft (KB)

Capacity: 5000.00 psia

Start Date: 2013.09.06 End Date: 2013.09.06

Last Calib.: 2013.09.06

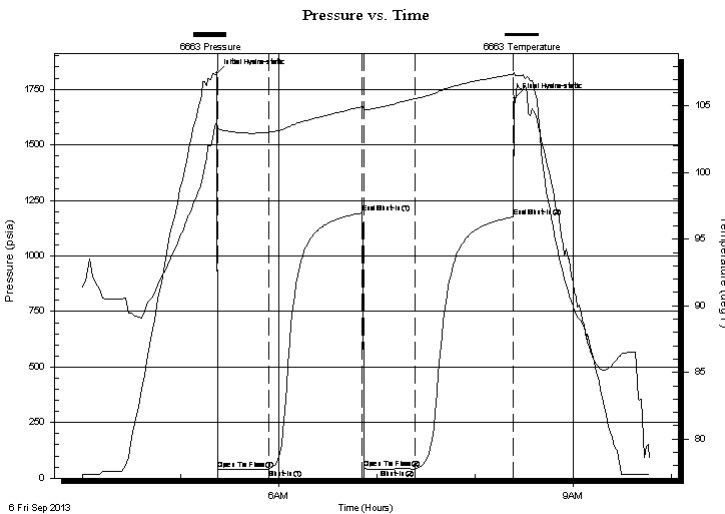
Start Time: 04:00:00 End Time: 09:47:23

Time On Btm: 2013.09.06 @ 05:22:23

Time Off Btm: 2013.09.06 @ 08:24:23

TEST COMMENT: 1st Opening 30 Minutes Weak blow for on e minute and died
1st Shut-In 60 Minutes-No blow back
2nd Opening 30 Minutes-No blow
2nd Shut-In 60 Minutes-No blow back

PRESSURE SUMMARY



Time (Min.)	Pressure (psia)	Temp (deg F)	Annotation
0	1822.51	103.71	Initial Hydro-static
1	39.40	103.32	Open To Flow (1)
32	39.55	103.03	Shut-In(1)
89	1193.39	104.96	End Shut-In(1)
90	42.51	104.72	Open To Flow (2)
121	41.40	105.55	Shut-In(2)
181	1174.53	107.39	End Shut-In(2)
182	1710.65	107.37	Final Hydro-static

Recovery

Length (ft)	Description	Volume (bbl)
1.00	Thick Heavy Mud	0.01

Gas Rates

Choke (inches)	Pressure (psia)	Gas Rate (Mcf/d)



DRILL STEM TEST REPORT

TOOL DIAGRAM

F.G.Holl Company LLC

32-21s-15w Pawnee

9431 East Central Suite 100
Wichita, Kansas 67206 2563

Farthing #2-32

Job Ticket: 17085

DST#: 4

ATTN: Rene Husted

Test Start: 2013.09.06 @ 00:00:00

Tool Information

Drill Pipe:	Length: 3627.00 ft	Diameter: 3.80 inches	Volume: 50.88 bbl	Tool Weight: 2000.00 lb
Heavy Wt. Pipe:	Length: 0.00 ft	Diameter: 0.00 inches	Volume: 0.00 bbl	Weight set on Packer: 20000.00 lb
Drill Collar:	Length: 0.00 ft	Diameter: 0.00 inches	Volume: 0.00 bbl	Weight to Pull Loose: 52000.00 lb
			<u>Total Volume: 50.88 bbl</u>	Tool Chased 0.00 ft
Drill Pipe Above KB:	4.00 ft			String Weight: Initial 50000.00 lb
Depth to Top Packer:	3651.00 ft			Final 50000.00 lb
Depth to Bottom Packer:	ft			
Interval between Packers:	19.00 ft			
Tool Length:	47.00 ft			
Number of Packers:	2	Diameter: 6.75 inches		

Tool Comments:

Tool Description	Length (ft)	Serial No.	Position	Depth (ft)	Accum. Lengths
------------------	-------------	------------	----------	------------	----------------

Shut-In Tool	5.00			3628.00	
Hydraulic Tool	5.00			3633.00	
Safety Joint	2.00			3635.00	
Jars	6.00			3641.00	
Packer	5.00			3646.00	28.00 Bottom Of Top Packer
Packer	5.00			3651.00	
Anchor	14.00			3665.00	
Recorder	1.00	6663	Inside	3666.00	
Recorder	1.00	6748	Outside	3667.00	
Bullnose	3.00			3670.00	19.00 Bottom Packers & Anchor
Total Tool Length:	47.00				



DRILL STEM TEST REPORT

FLUID SUMMARY

F.G.Holl Company LLC

32-21s-15w Pawnee

9431 East Central Suite 100
Wichita, Kansas 67206 2563

Farthing #2-32

Job Ticket: 17085

DST#: 4

ATTN: Rene Husted

Test Start: 2013.09.06 @ 00:00:00

Mud and Cushion Information

Mud Type: Gel Chem

Cushion Type:

Oil API:

deg API

Mud Weight: 9.00 lb/gal

Cushion Length: ft

Water Salinity: ppm

Viscosity: 58.00 sec/qt

Cushion Volume: bbl

Water Loss: 8.80 in³

Gas Cushion Type:

Resistivity: ohm.m

Gas Cushion Pressure: psia

Salinity: 5000.00 ppm

Filter Cake: 1.00 inches

Recovery Information

Recovery Table

Length ft	Description	Volume bbl
1.00	Thick Heavy Mud	0.014

Total Length: 1.00 ft Total Volume: 0.014 bbl

Num Fluid Samples: 0

Num Gas Bombs: 0

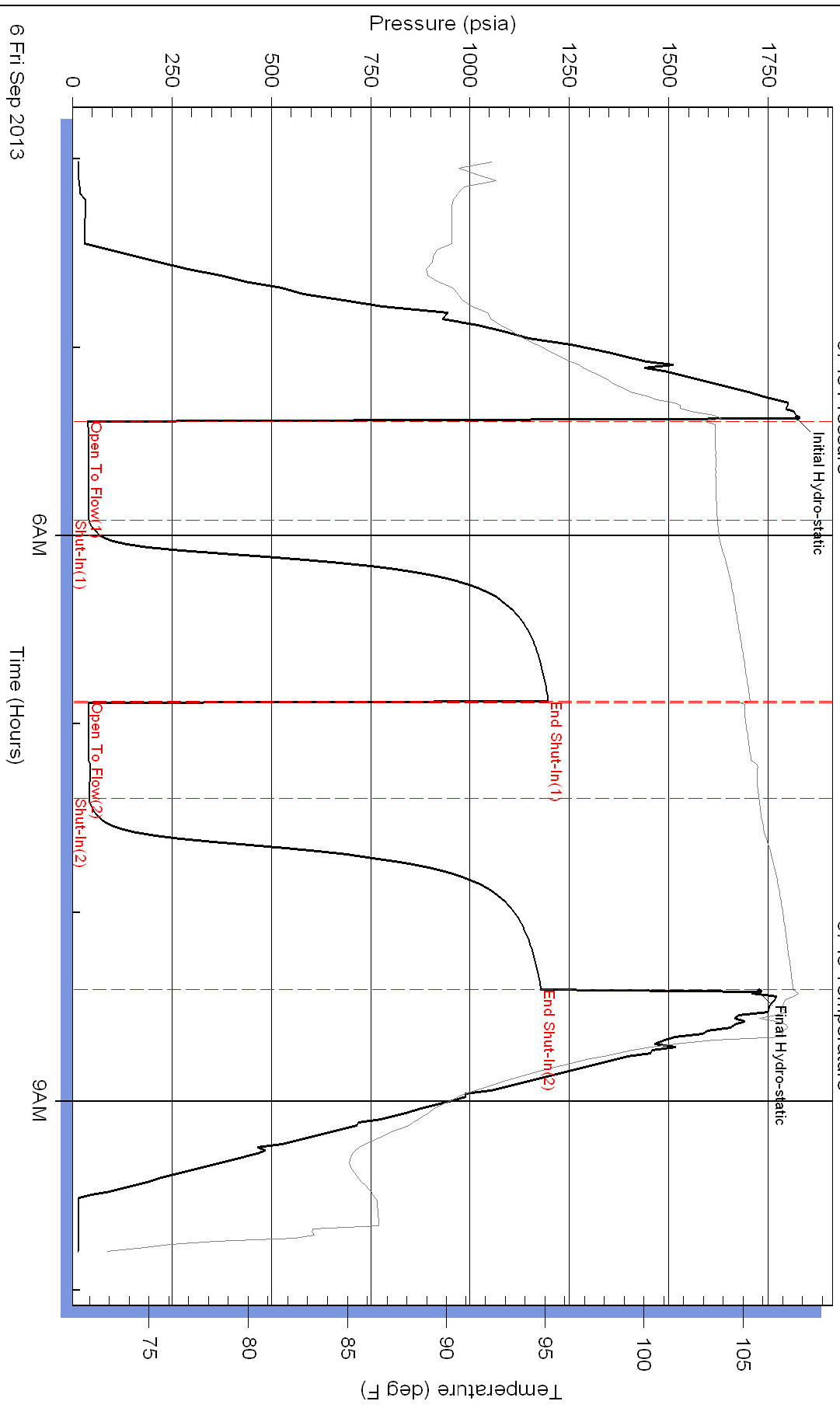
Serial #:

Laboratory Name:

Laboratory Location:

Recovery Comments:

Pressure vs. Time



Pressure vs. Time

