



TRILOBITE TESTING, INC.

DRILL STEM TEST REPORT

Samuel Gary Jr & Associates Inc

15-12s-17w Ellis

1515 Wynkoop
Ste 700
Denver Co 80202
ATTN: Chris Mitchell

Schmeidler etal#2-15

Job Ticket: 52089 **DST#: 1**

Test Start: 2013.06.05 @ 21:25:51

GENERAL INFORMATION:

Formation: **LKC C-D**

Deviated: No Whipstock: ft (KB)

Time Tool Opened: 23:44:01

Time Test Ended: 05:26:30

Test Type: Conventional Bottom Hole (Initial)

Tester: Ray Schwager

Unit No: 42

Interval: 3398.00 ft (KB) To 3432.00 ft (KB) (TVD)

Reference Elevations: 2143.00 ft (KB)

Total Depth: 3432.00 ft (KB) (TVD)

2135.00 ft (CF)

Hole Diameter: 7.85 inches Hole Condition: Fair

KB to GR/CF: 8.00 ft

Serial #: 8369 Inside

Press @ Run Depth: 39.85 psig @ 3404.00 ft (KB)

Capacity: 8000.00 psig

Start Date: 2013.06.05 End Date: 2013.06.06

Last Calib.: 2013.06.06

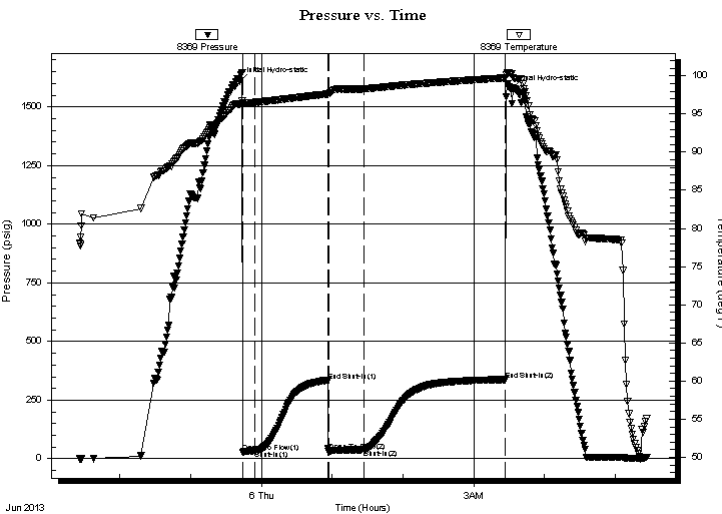
Start Time: 21:25:51 End Time: 05:26:30

Time On Btm: 2013.06.05 @ 23:41:46

Time Off Btm: 2013.06.06 @ 03:32:00

TEST COMMENT: 10-IFP-w k bl thru-out 1/4" to 1/2" bl
60-ISIP-no bl
30-FFP-w k bl thru-out 1/2" to 1 1/2" bl
120-FSIP-no bl

PRESSURE SUMMARY



Time (Min.)	Pressure (psig)	Temp (deg F)	Annotation
0	1608.64	96.28	Initial Hydro-static
3	28.40	96.37	Open To Flow (1)
13	35.18	96.52	Shut-In(1)
75	333.03	97.62	End Shut-In(1)
75	30.13	97.56	Open To Flow (2)
105	39.85	98.30	Shut-In(2)
225	335.94	99.73	End Shut-In(2)
231	1574.19	100.32	Final Hydro-static

Recovery

Length (ft)	Description	Volume (bbl)
30.00	HO&GCM 7%G25%O68%M	0.15
0.00	90"GIP	0.00

Gas Rates

Choke (inches)	Pressure (psig)	Gas Rate (Mcf/d)



**TRILOBITE
TESTING, INC.**

DRILL STEM TEST REPORT

Samuel Gary Jr & Associates Inc
1515 Wynkoop
Ste 700
Denver Co 80202
ATTN: Chris Mitchell

15-12s-17w Ellis

Schmeidler etal#2-15

Job Ticket: 52089

DST#: 1

Test Start: 2013.06.05 @ 21:25:51

GENERAL INFORMATION:

Formation: **LKC C-D**

Deviated: No Whipstock: ft (KB)

Time Tool Opened: 23:44:01

Time Test Ended: 05:26:30

Interval: 3398.00 ft (KB) To 3432.00 ft (KB) (TVD)

Total Depth: 3432.00 ft (KB) (TVD)

Hole Diameter: 7.85 inches Hole Condition: Fair

Test Type: Conventional Bottom Hole (Initial)

Tester: Ray Schwager

Unit No: 42

Reference Elevations: 2143.00 ft (KB)

2135.00 ft (CF)

KB to GR/CF: 8.00 ft

Serial #: 8374

Fluid

Press @ Run Depth: psig @ 3364.00 ft (KB)

Start Date: 2013.06.05

End Date:

2013.06.06

Start Time: 21:25:20

End Time:

05:25:44

Capacity: 8000.00 psig

Last Calib.:

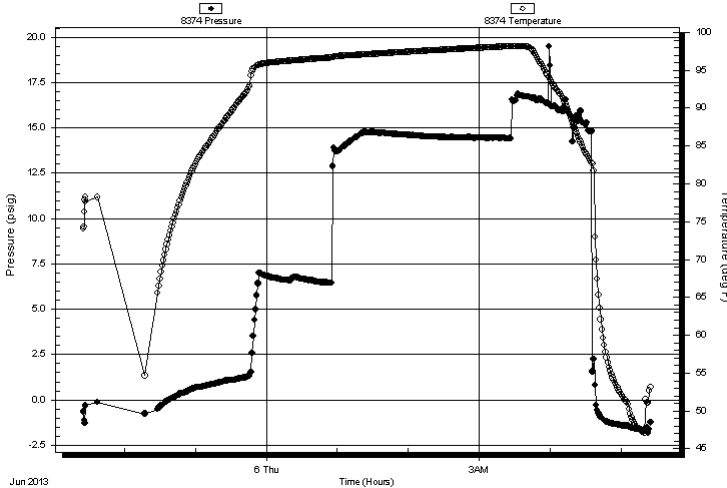
2013.06.06

Time On Btm:

Time Off Btm:

TEST COMMENT: 10-IFP-w k bl thru-out 1/4" to 1/2" bl
60-ISIP-no bl
30-FFP-w k bl thru-out 1/2" to 1 1/2" bl
120-FSIP-no bl

Pressure vs. Time



PRESSURE SUMMARY

Time (Min.)	Pressure (psig)	Temp (deg F)	Annotation

Recovery

Length (ft)	Description	Volume (bbl)
30.00	HO&GCM 7%G25%O68%M	0.15
0.00	90" GIP	0.00

Gas Rates

Choke (inches)	Pressure (psig)	Gas Rate (Mcf/d)



**TRILOBITE
TESTING, INC.**

DRILL STEM TEST REPORT

FLUID SUMMARY

Samuel Gary Jr & Associates Inc

15-12s-17w Ellis

1515 Wynkoop
Ste 700
Denver Co 80202
ATTN: Chris Mitchell

Schmeidler etal#2-15

Job Ticket: 52089 **DST#: 1**

Test Start: 2013.06.05 @ 21:25:51

Mud and Cushion Information

Mud Type: Gel Chem	Cushion Type:	Oil API: 34 deg API
Mud Weight: 9.00 lb/gal	Cushion Length: ft	Water Salinity: ppm
Viscosity: 60.00 sec/qt	Cushion Volume: bbl	
Water Loss: 8.76 in ³	Gas Cushion Type:	
Resistivity: ohm.m	Gas Cushion Pressure: psig	
Salinity: 4000.00 ppm		
Filter Cake: 1.00 inches		

Recovery Information

Recovery Table

Length ft	Description	Volume bbl
30.00	HO&GCM 7%G25%O68%M	0.148
0.00	90"GIP	0.000

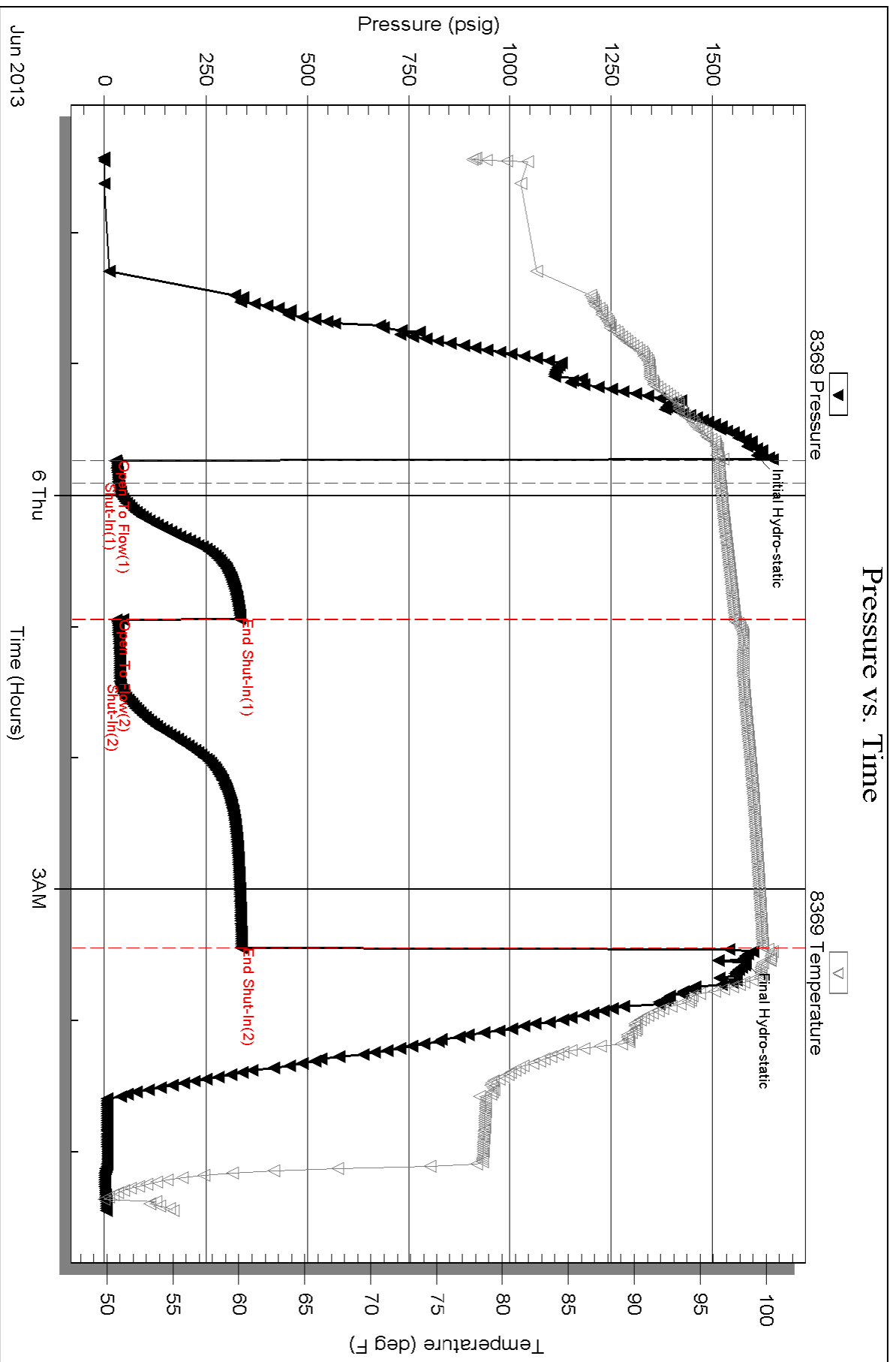
Total Length: 30.00 ft Total Volume: 0.148 bbl

Num Fluid Samples: 0 Num Gas Bombs: 0 Serial #:

Laboratory Name: Laboratory Location:

Recovery Comments: Sampler Data:130PSI 1500ML Oil 500ML gas

Pressure vs. Time



Serial #: 8374

Fluid

Samuel Gary Jr & Associates Inc

Schneider et al #2-15

DST Test Number: 1

